

V. CONCLUSIONS

1. The results obtained in these runs were not as consistent as those obtained in previous runs at Montebello. Some of the later runs were longer, but the yields and conversion levels of some of the runs were sometimes poorer and sometimes better than previously experienced.

2. The maximum yield level reached in any run was in

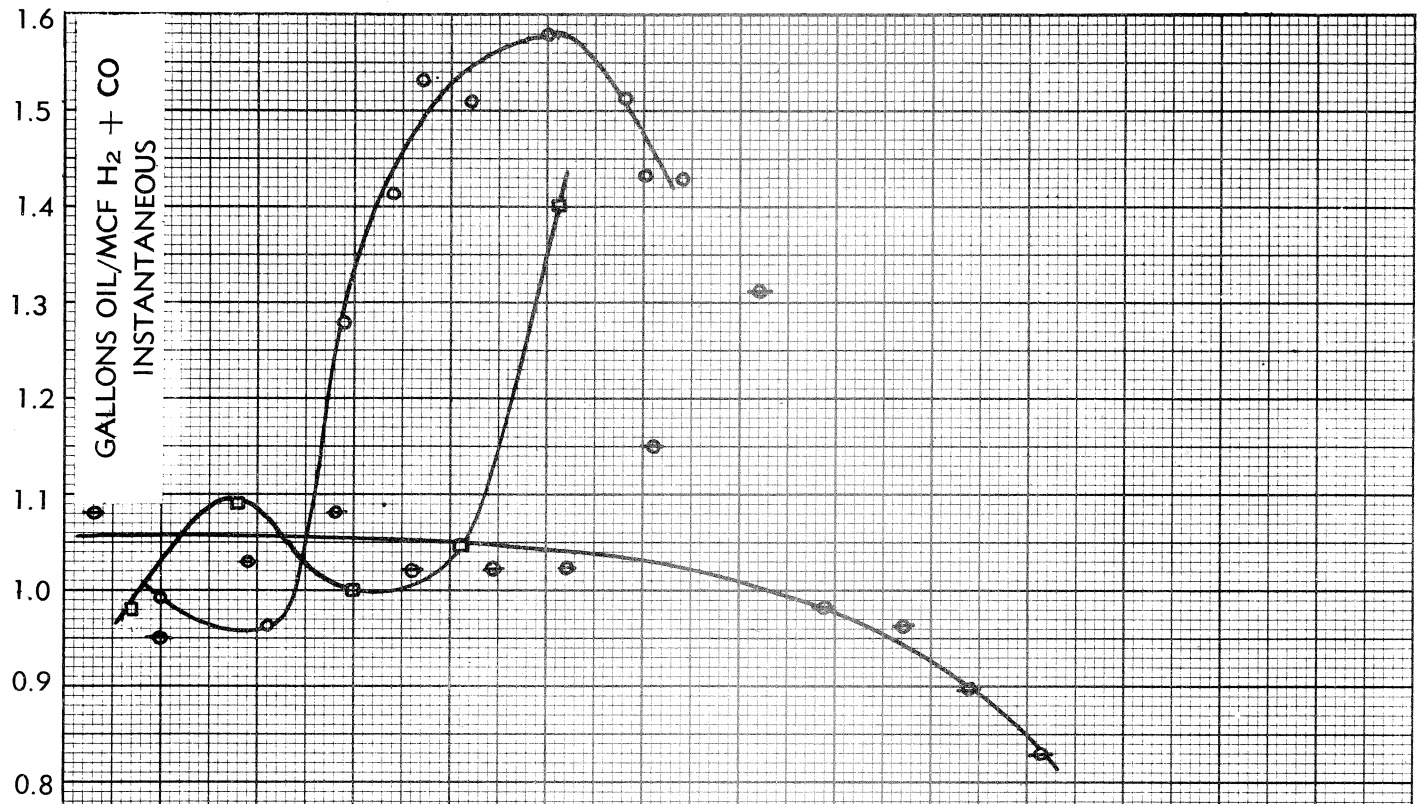
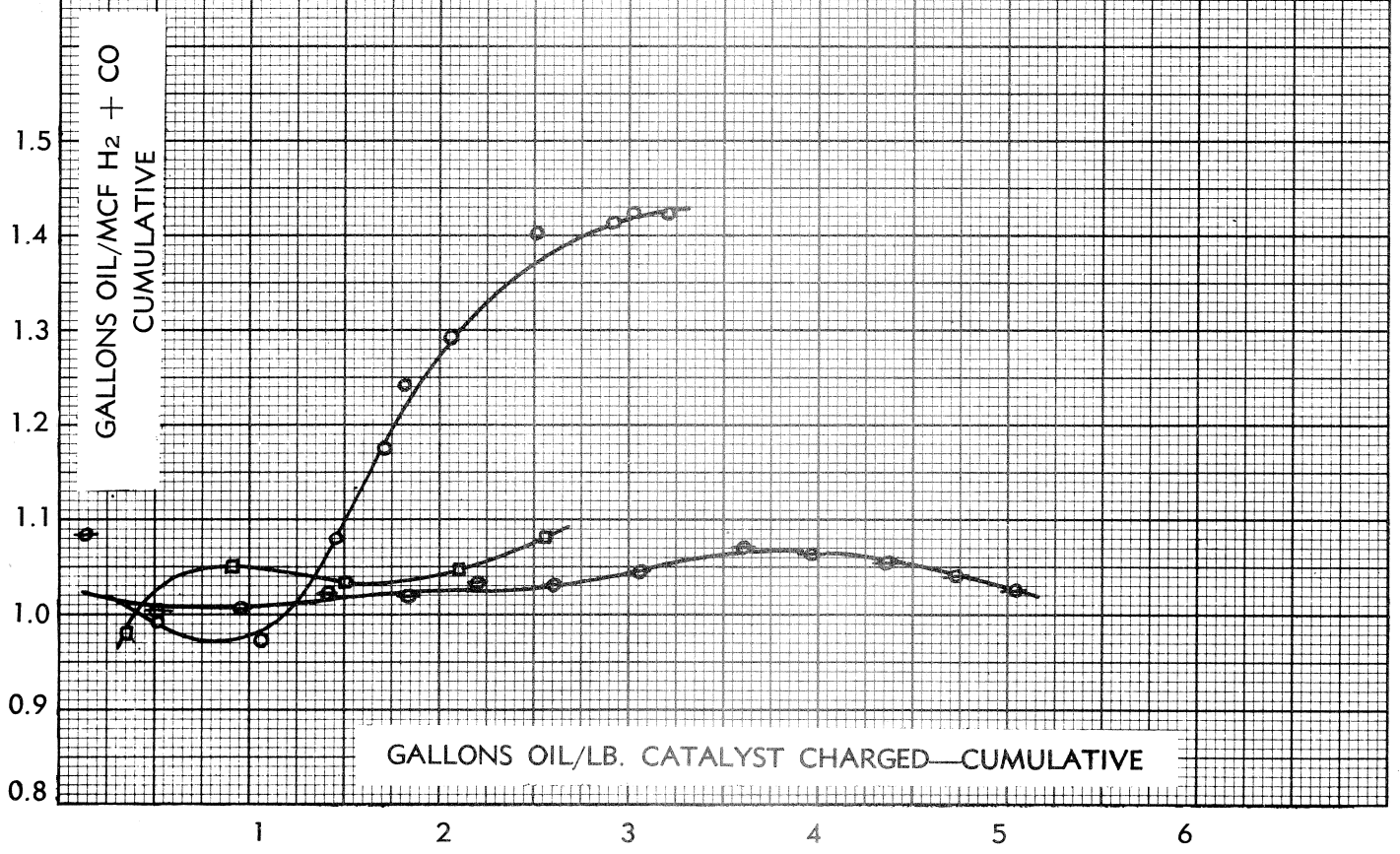


FIGURE XII



Run 22G. This was 1.58 gal./MCF of H₂ & CO as compared to 1.60 gal./MCF in Run 16D as reported in Partial Report 5. There were four twenty-four hour periods during Run 22 when the yield was better than 1.50 gal./MCF of H₂ & CO.

3. The water gas equilibrium was approached only during periods of higher contraction. This may explain the low contraction periods, if it may be assumed that the contact time of the synthesis gas was insufficient to attain equilibrium during the periods of low contraction.

REPORT PREPARED BY W. L. Slater

APPROVED BY de B. Sussman

WLS:VR

WEK-LCK, jr-CEL-WAM-duBE

WMS-RFB-KGM-HVR(PA)

WORK DONE BY

duBois Eastman	Ass't. Dir. of Research
Gordon Kiddoo	Chemical Engineer
W. L. Slater	Chemical Engineer
C. R. Carkeek	Chemical Engineer
J. B. Malin	Mechanical Engineer
Dale M. Strasser	Mechanical Engineer
Clyde Potter	Operator
James Elliott	Operator
Lawrence Estabrook	Operator
Gerald Scott	Operator
Cecil Mitchell	Operator Helper
Loris Javine	Operator Helper
Doyle Moore	Operator Helper
Willard Herrick	Operator Helper
Elwood Smith	Operator Helper
Thomas Foster	Operator Helper
Lloyd Jackson	Operator Helper
Harley Heins	Operator Helper
Charles Turbyfill	Operator Helper
John Matthews	Operator Helper
James Richardson	Operator Helper
Alfred Whitmore	Operator Helper
Augustus Neale	Operator Helper

Analytical Work - Mass Spectrometer

Arthur Edwards	Chemist
Eugene Metcalf	Operator Helper
Ralph Ricketts	Operator Helper
William Sample	Operator Helper

REPORT WRITTEN BY

W. L. Slater	Chemical Engineer
--------------	-------------------

WEK-LCKjr-CEL-WAM-duBE

WMS-RFB-KGM-HVR(PA)