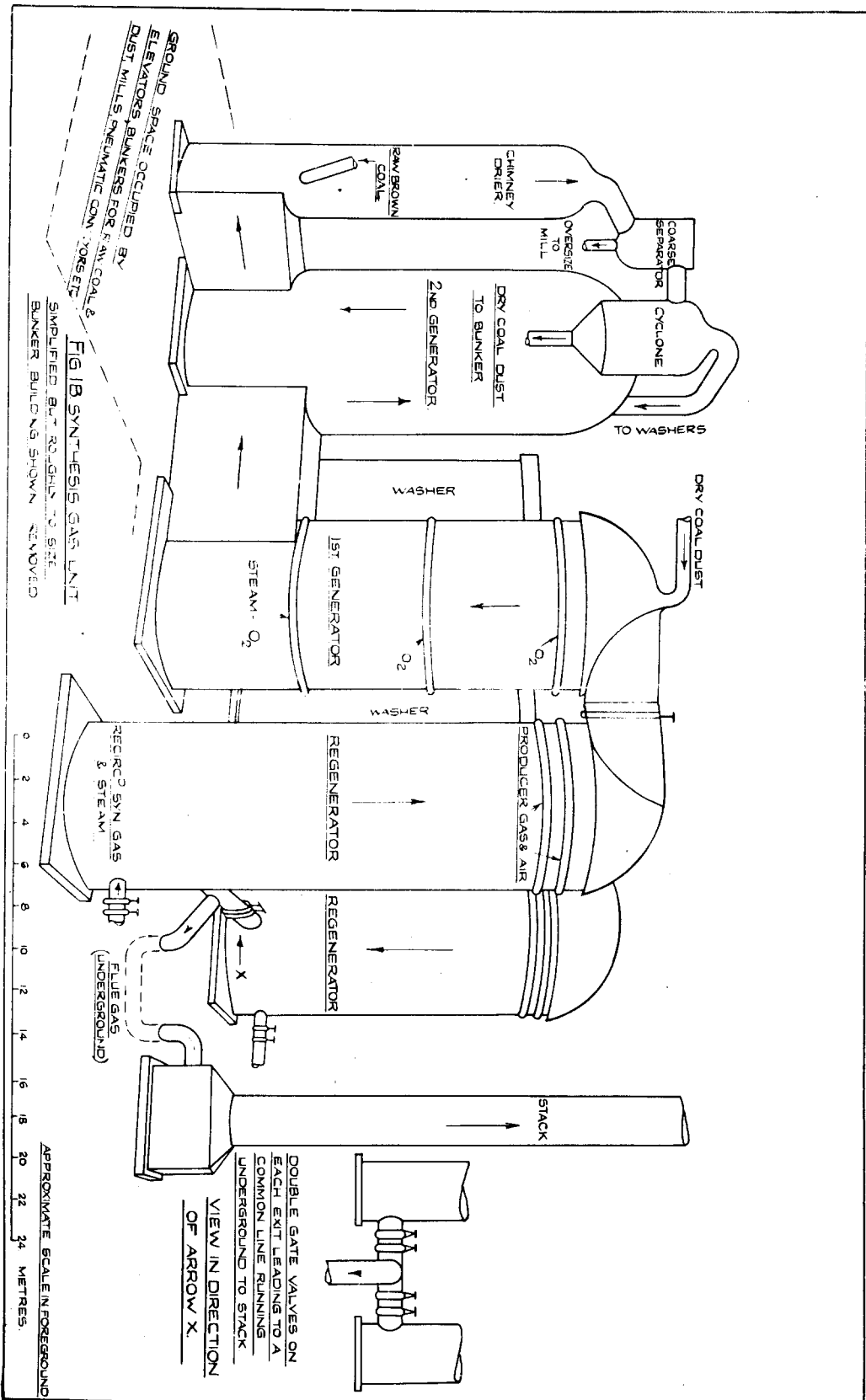


FIG. 1A. PLAN VIEW & ROUGH LAYOUT  
SYNTHESIS GAS UNIT





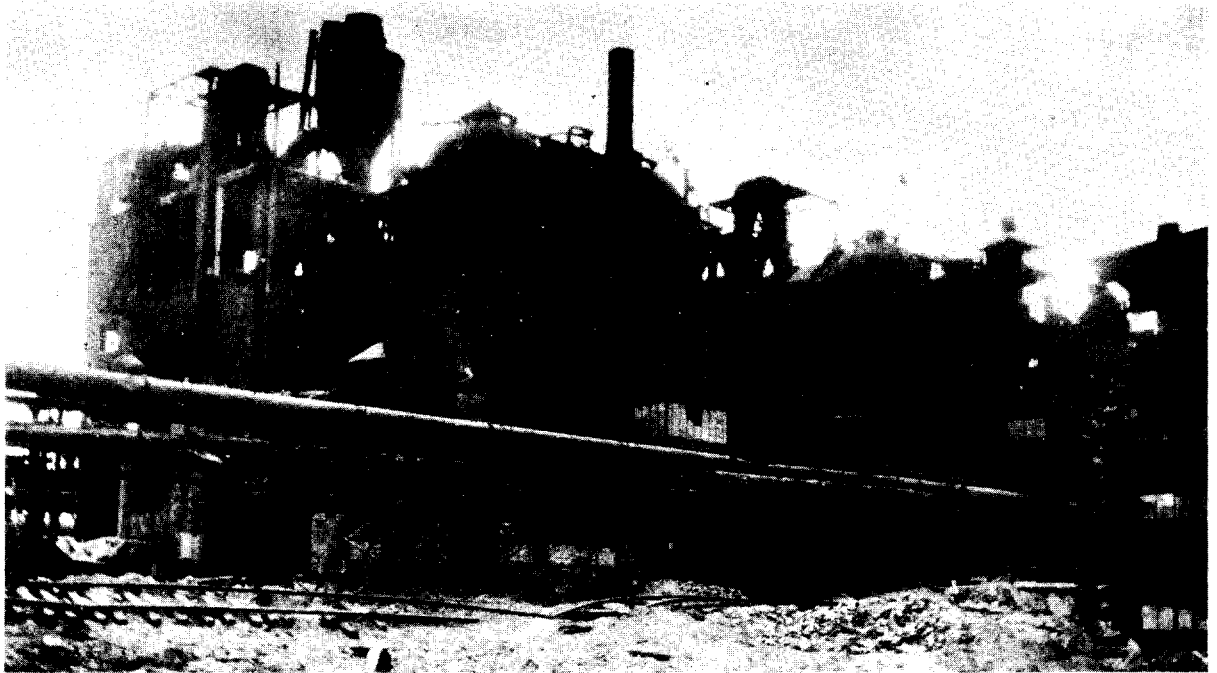


FIG. 3. General View of Synthesis Gas Plant,  
(showing two units).

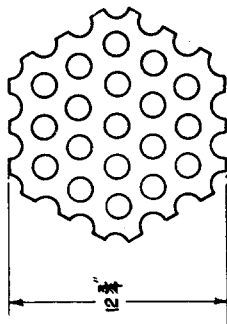


FIG. 4 A.

PLAN VIEW OF DIDIER  
BRICK FOR REGENERATORS.

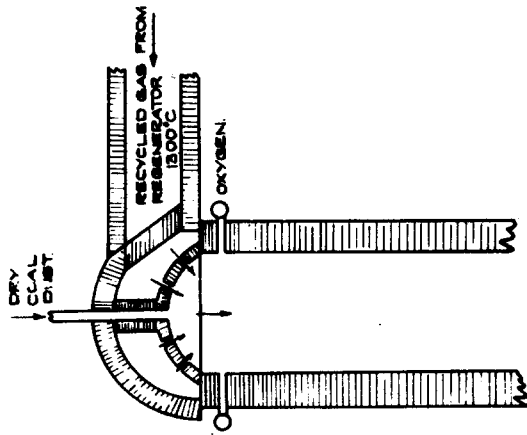


FIG. 4 B. TOP OF 1ST. GENERATOR (SECTION)

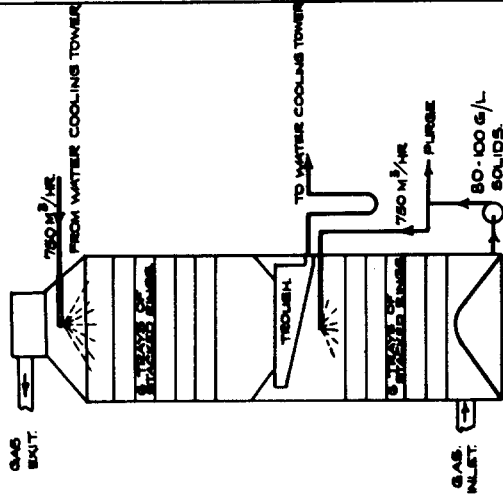


FIG. 4 C. SECTION OF WASHER.

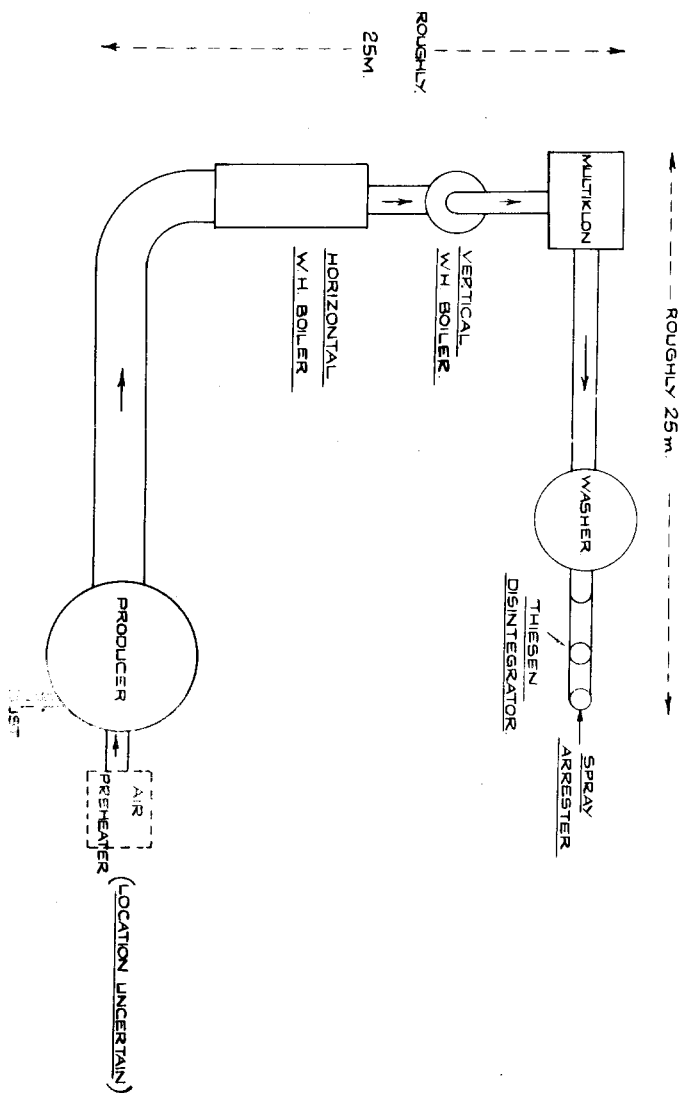


FIG. 5. ROUGH LAYOUT OF PRODUCER GAS UNIT

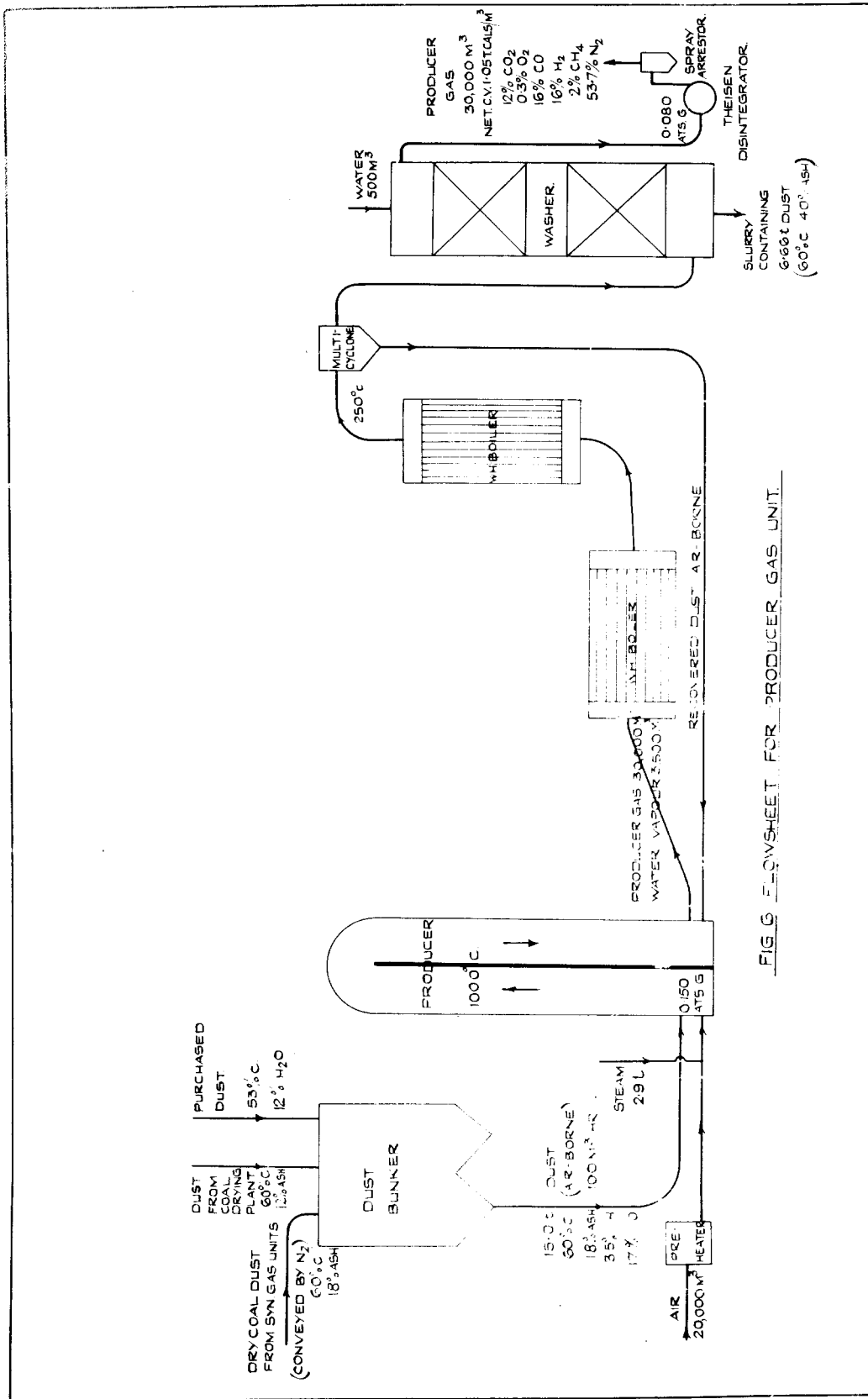


FIG 6 FLOWSHEET FOR PRODUCER GAS UNIT.