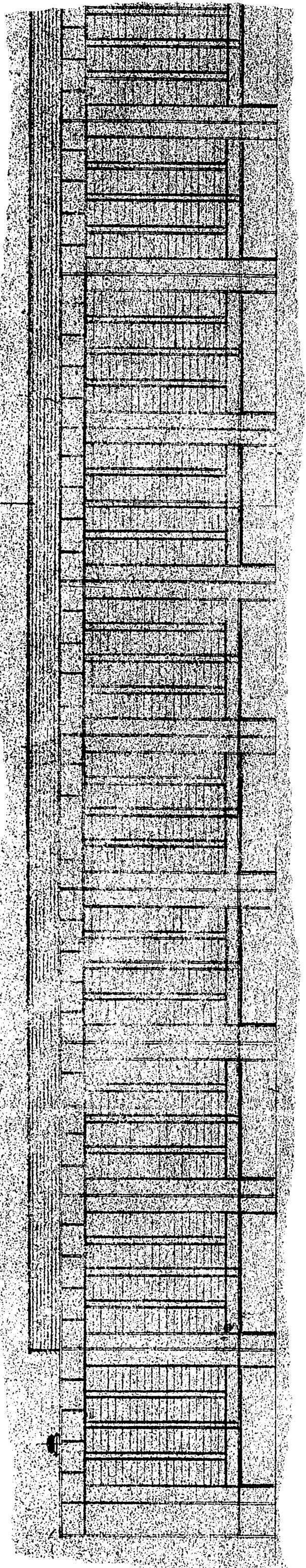
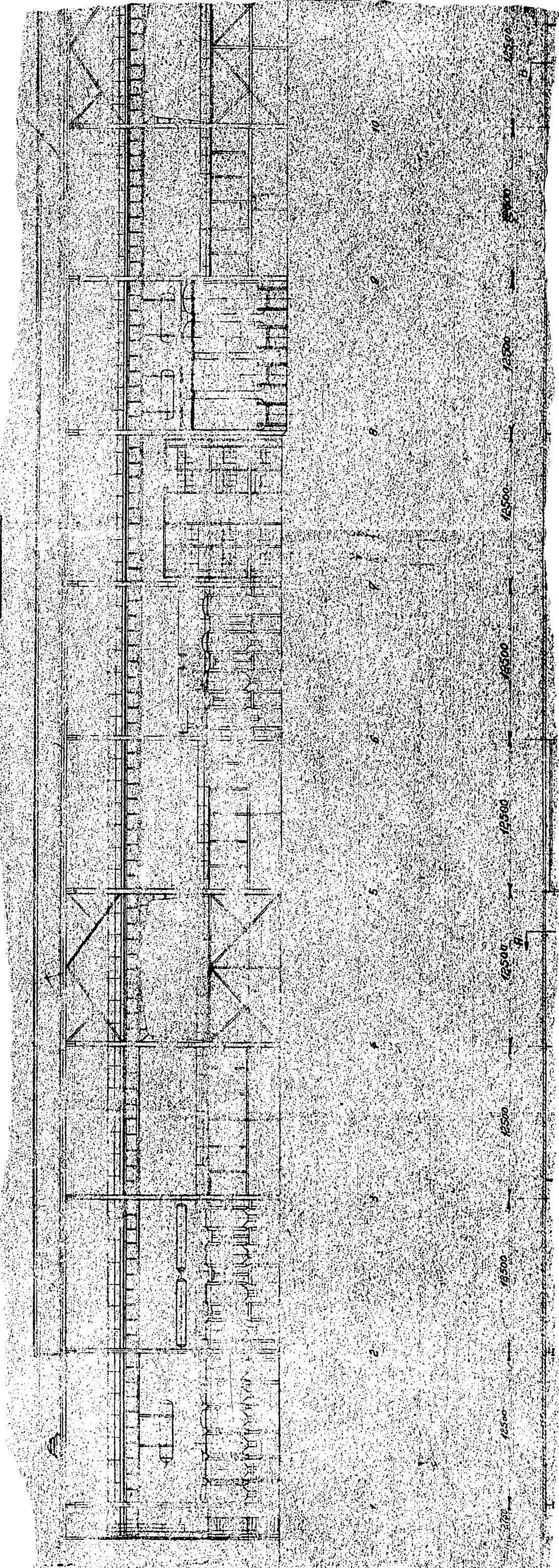


*Ansicht der Längswand*

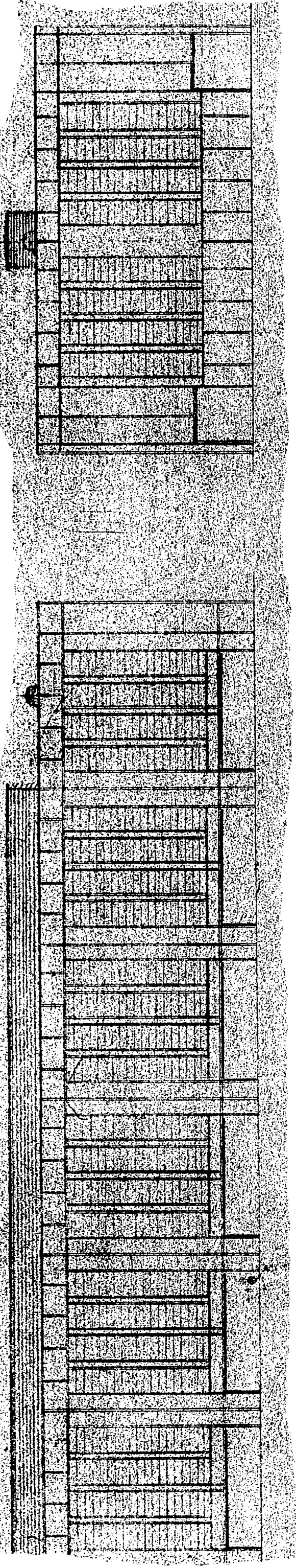


*Längsschnitt*

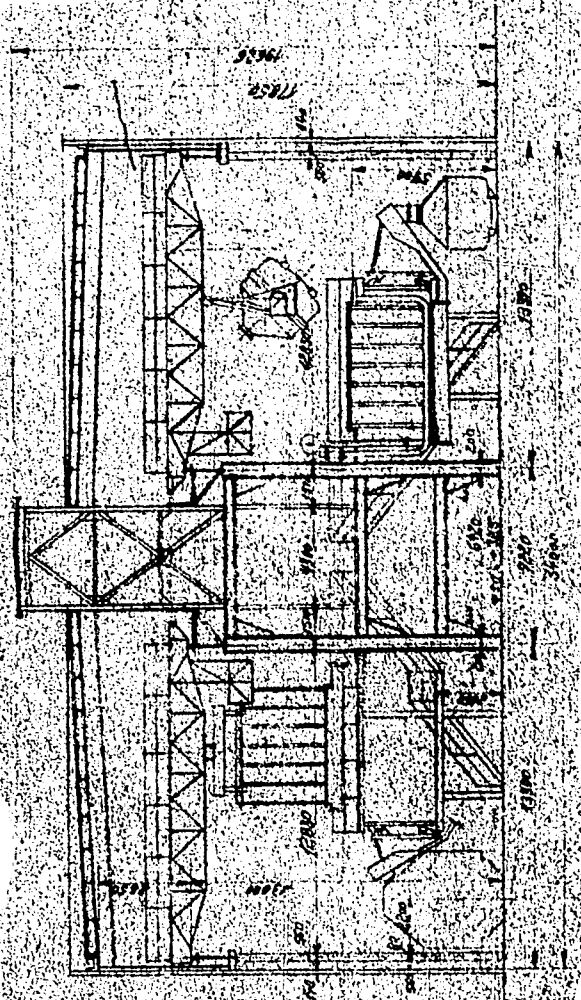




Ansicht der Gabelwand



Schnitt F-A

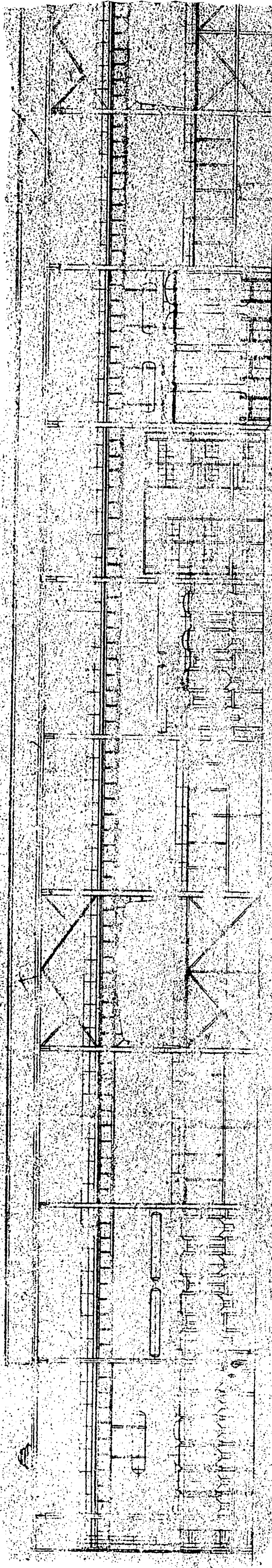


Schnitt B-B

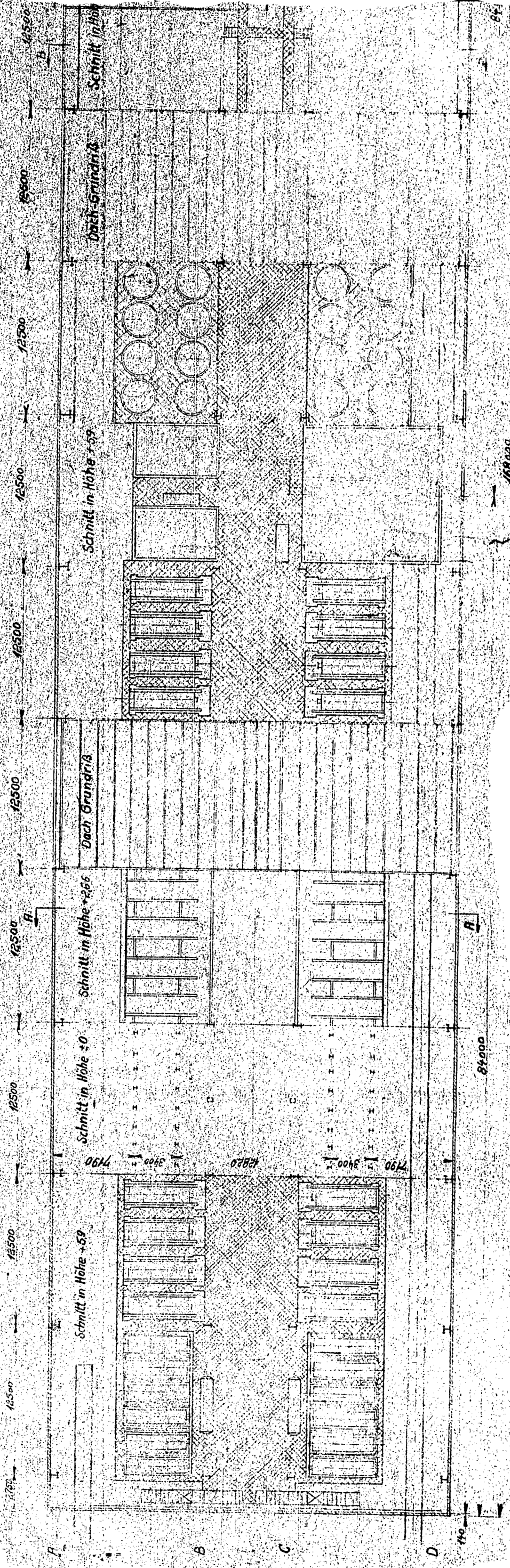




Längsschnitt



2 3 4 5 6 7 8 9 10



Schnitt in Höhe +59

Schnitt in Höhe +0

Schnitt in Höhe +266

Dach Grundriß

Schnitt in Höhe +57

Dach Grundriß

Schnitt in Höhe

16500 16500 16500 16500 16500 16500 16500 16500 16500 16500

84000

Erster Ansbau

Zweiter Ansbau

84



