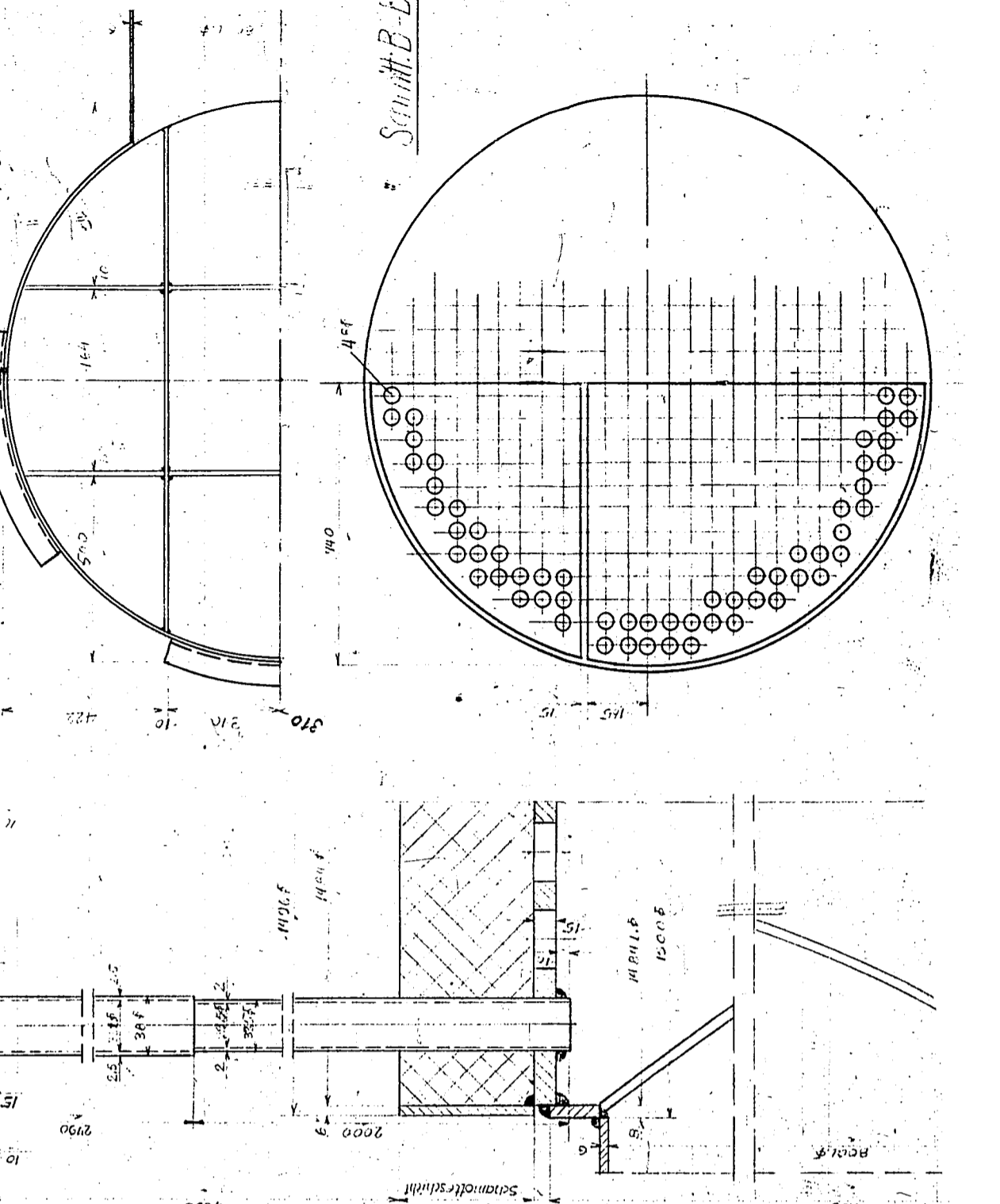
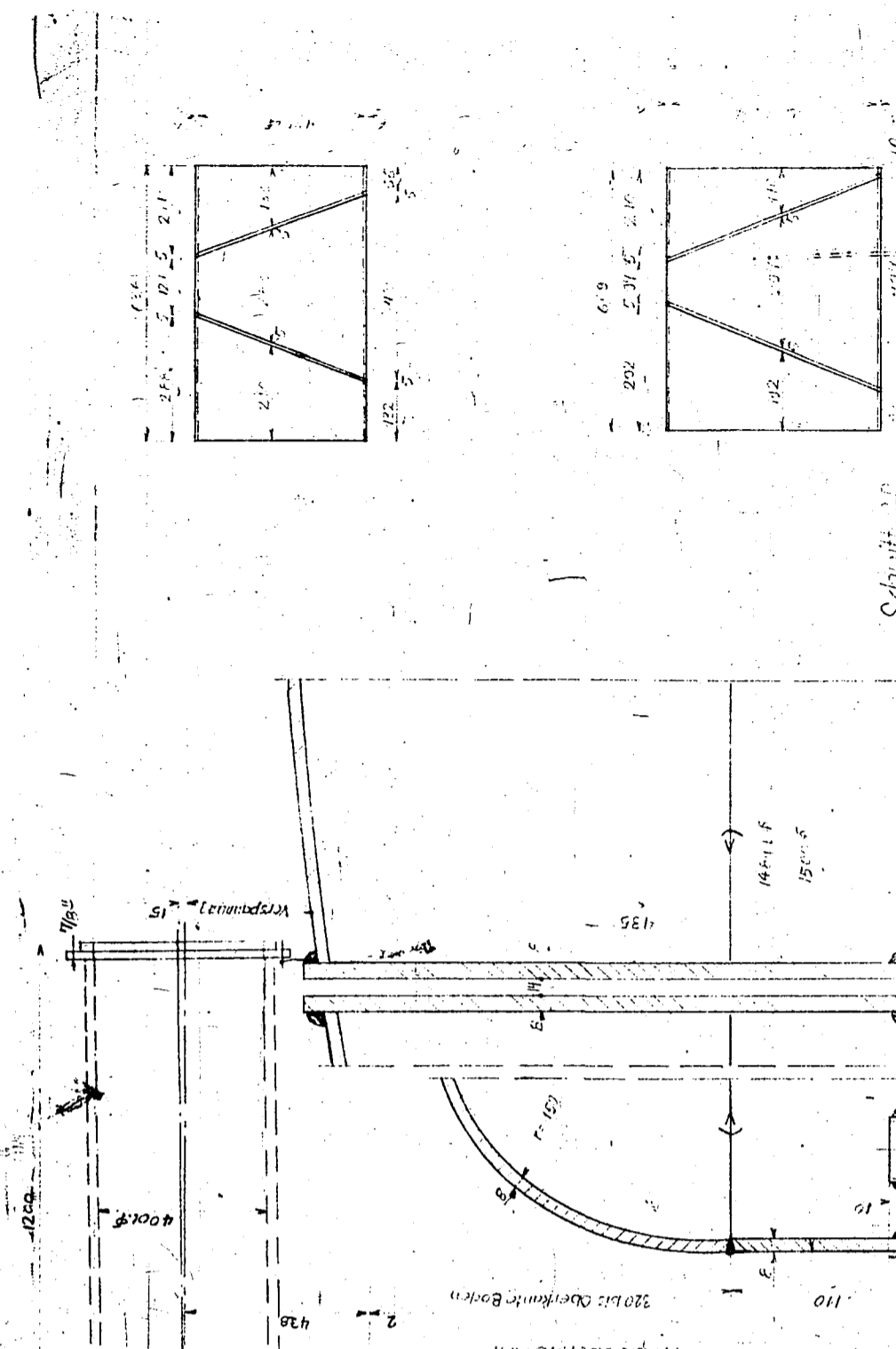
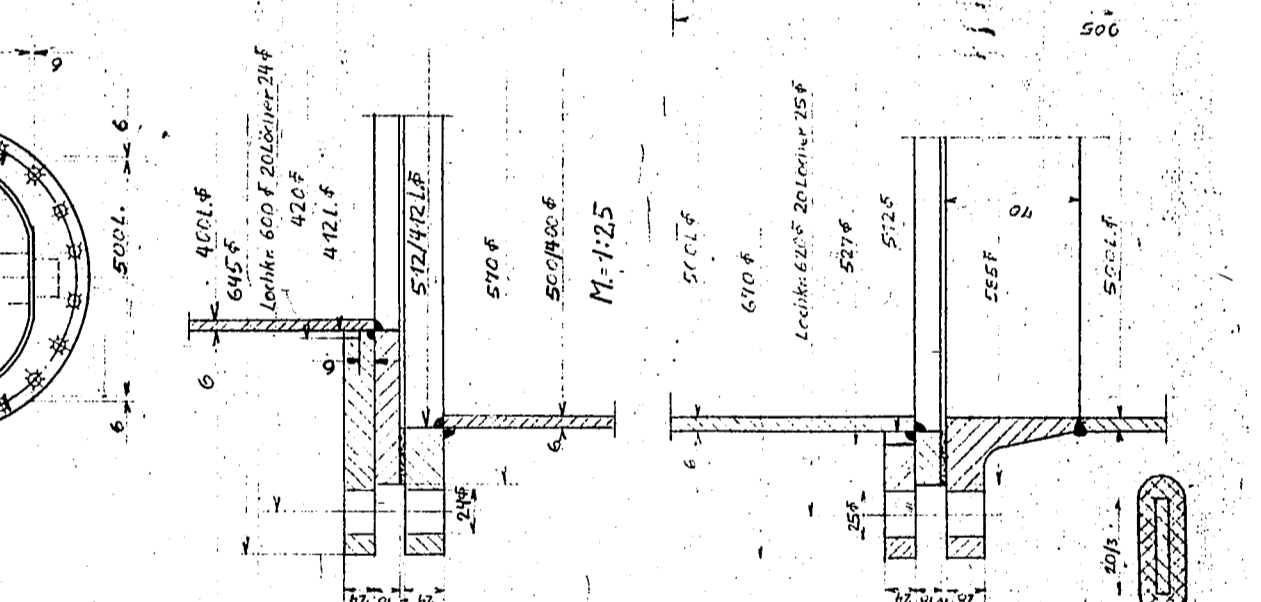
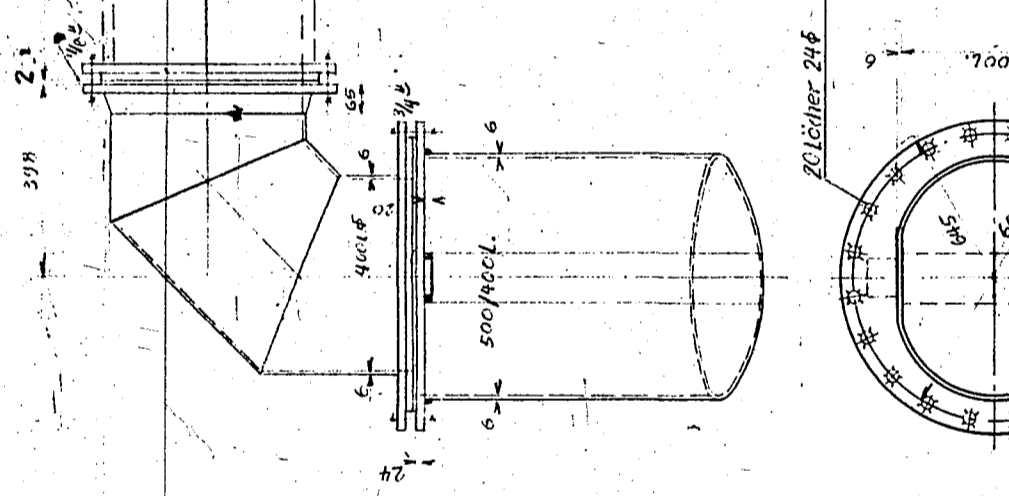
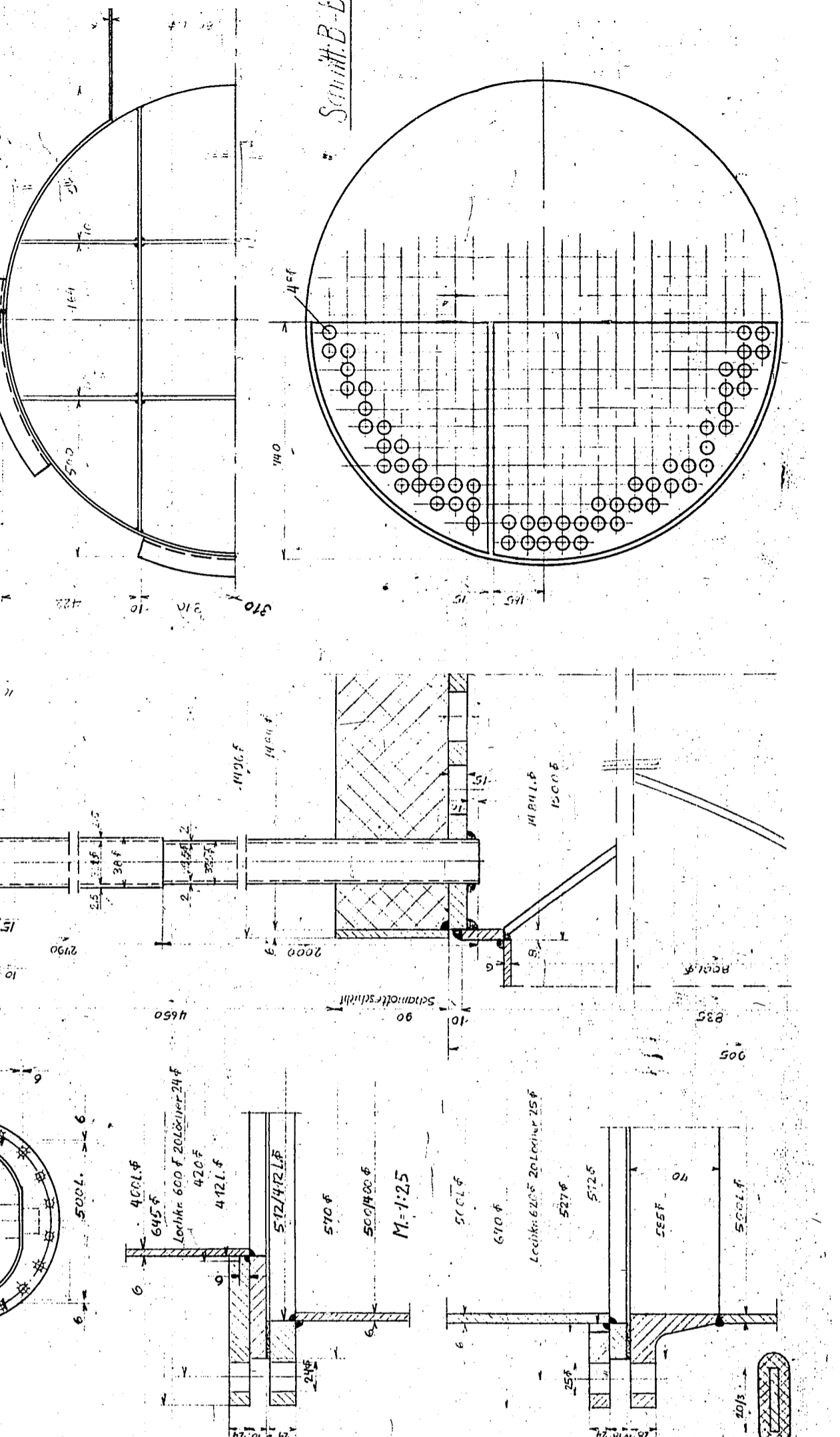
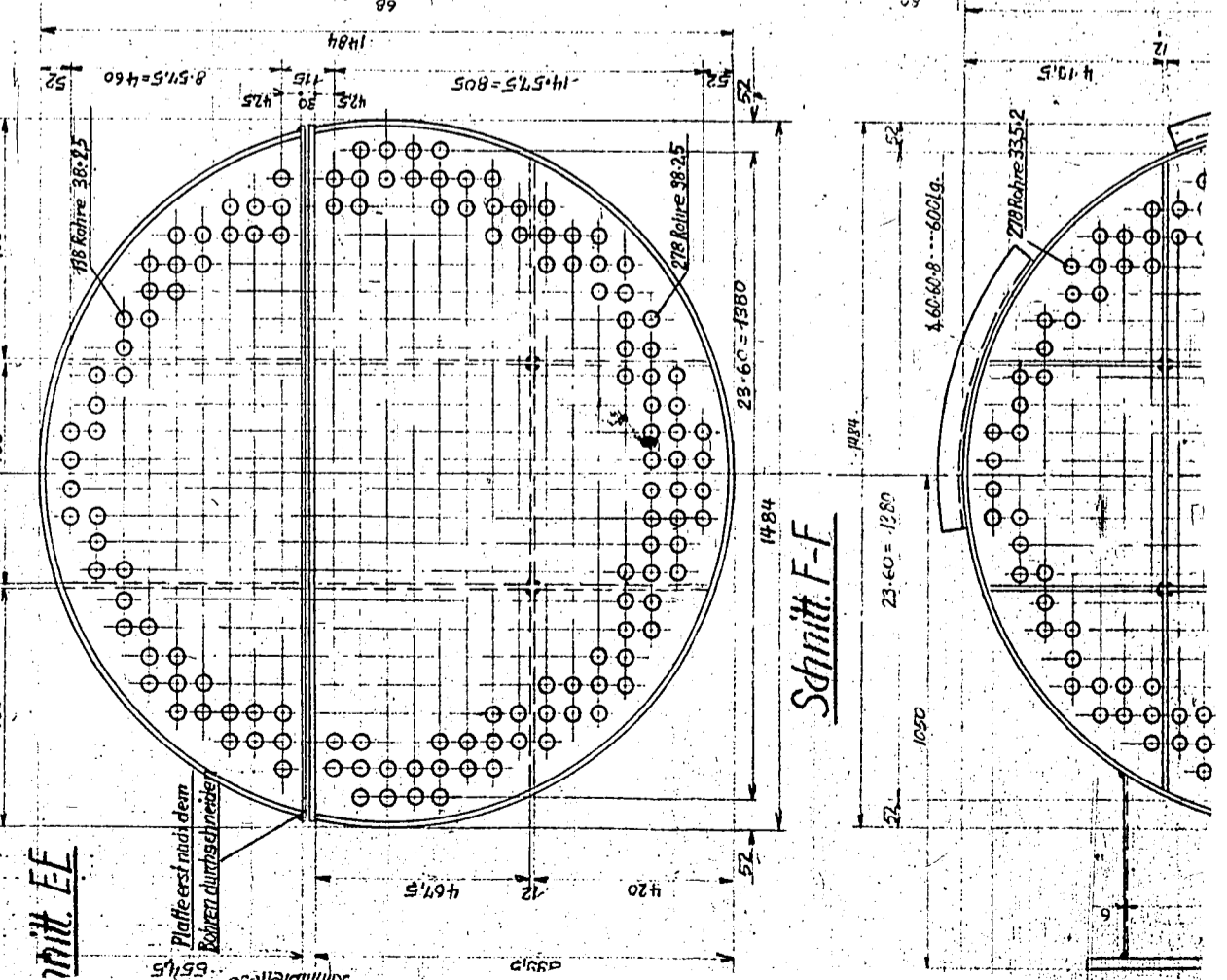
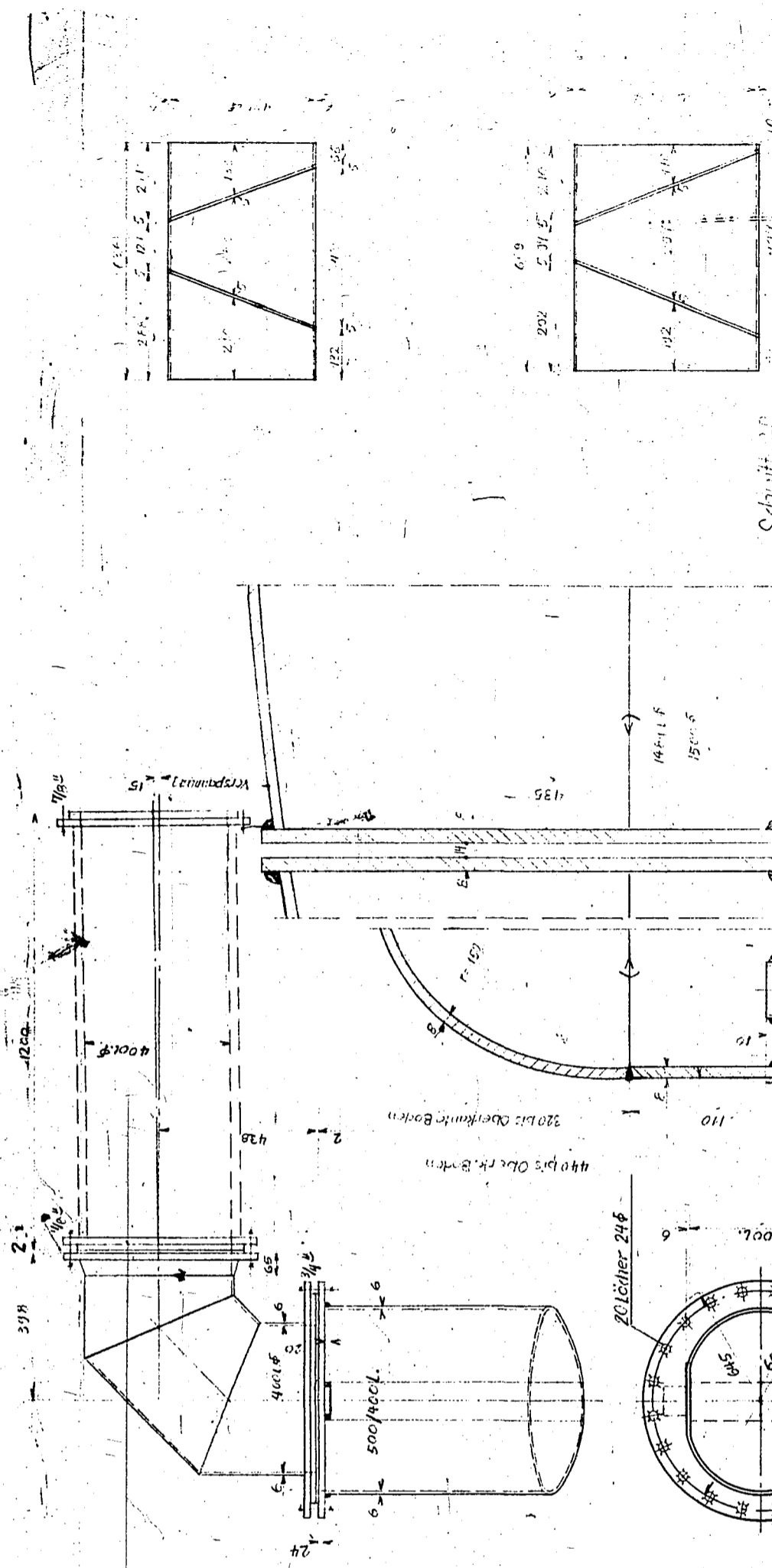
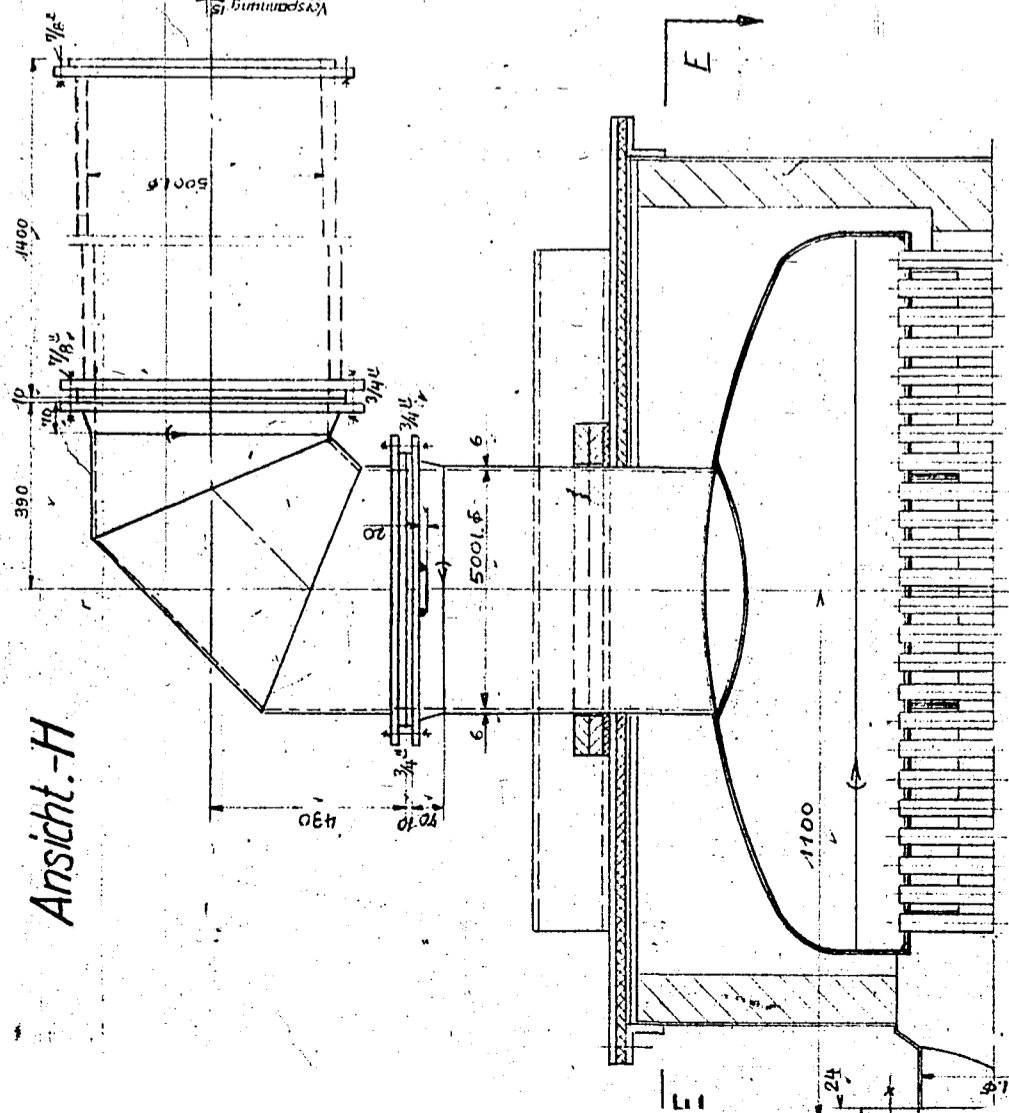
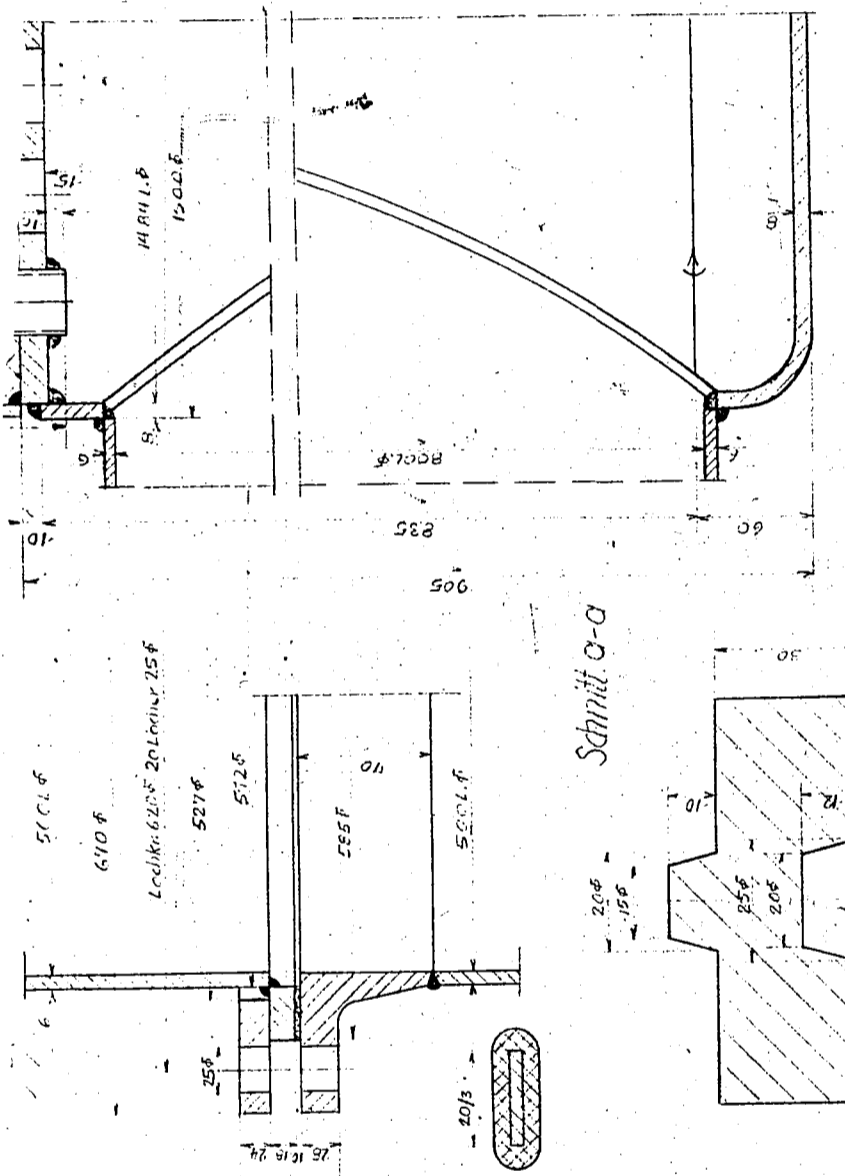
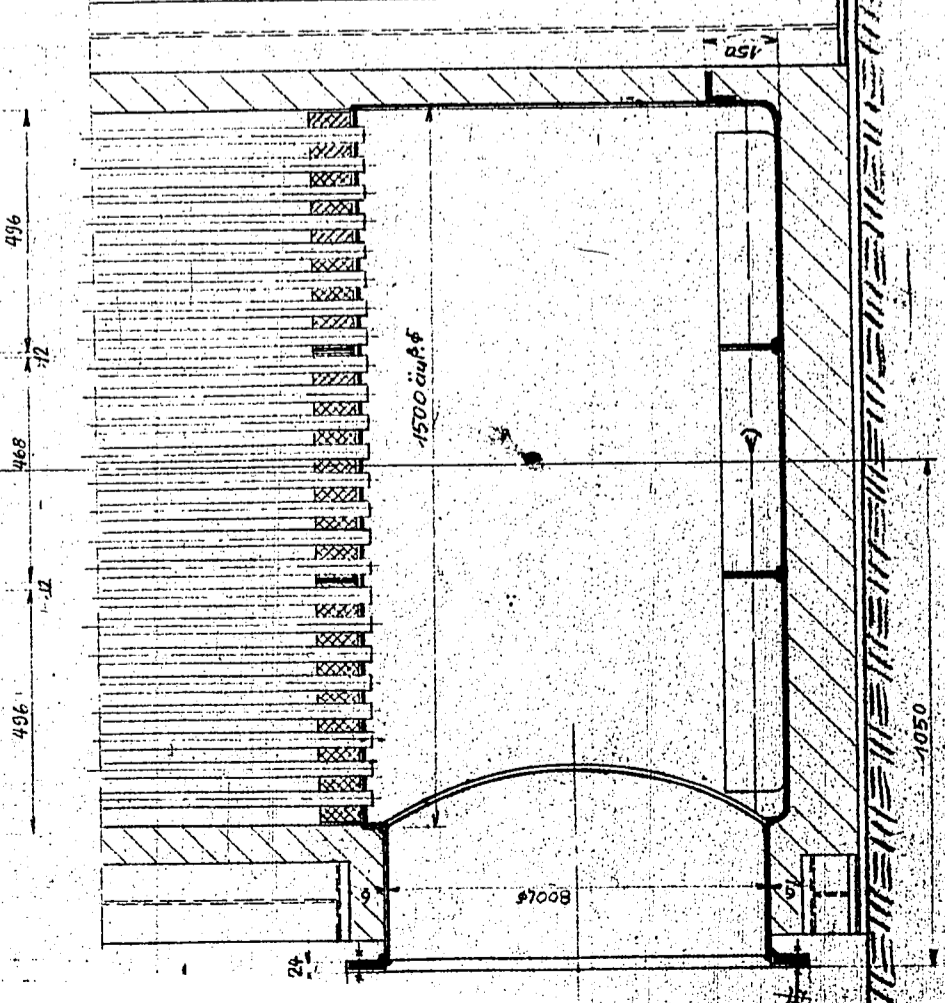
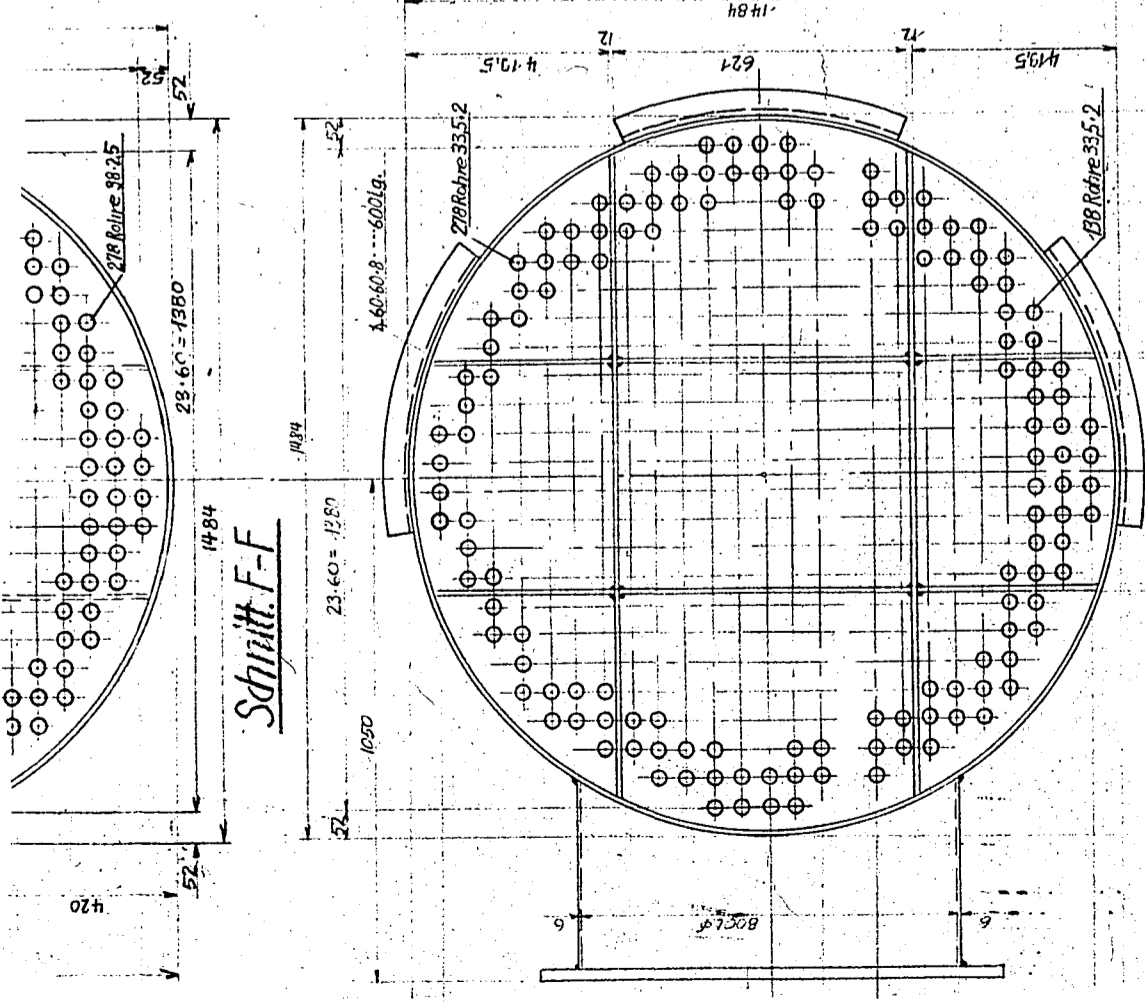


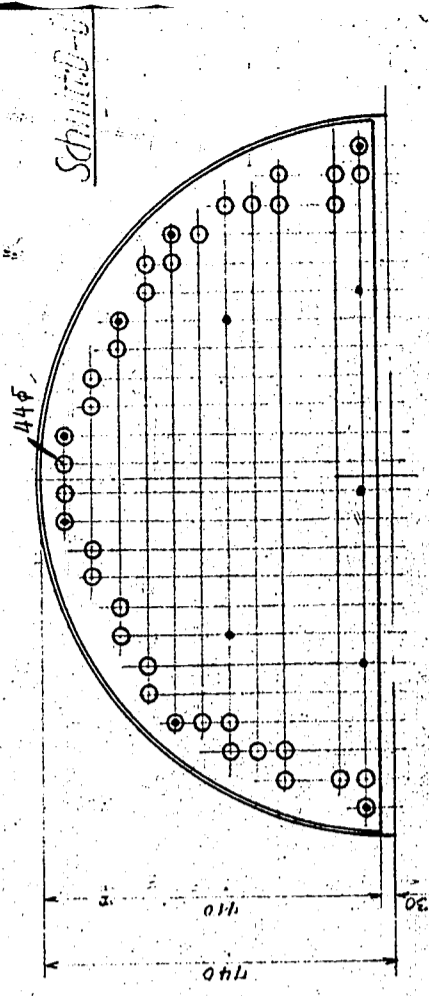
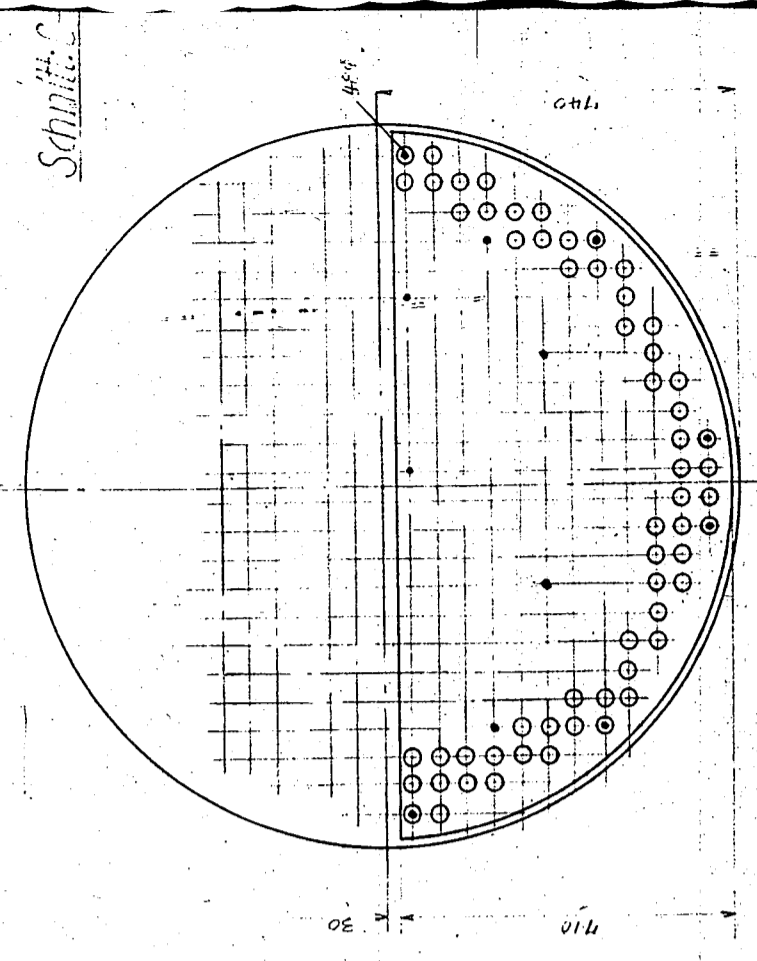
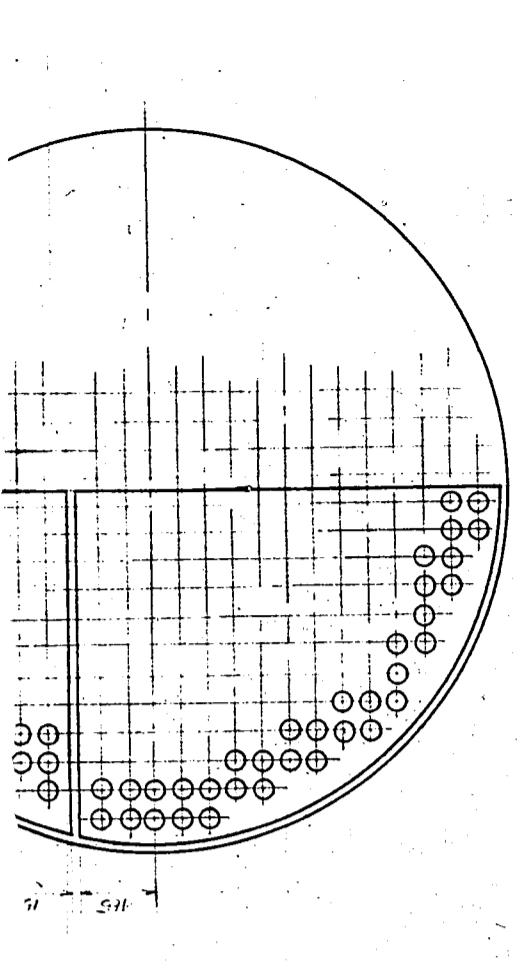
Ansicht-H





Nuten und Ausparungen sind genau unter 7.5
zu gießen, damit die künftigen Kessel nicht
nieder gelegt werden können.

Die Lüftungsstege werden an die mit
einem Punkt versehene Rohre angeschraubt.
(S. Seite C-C, D-D)



Stück	Benennung	Teil	Zug. Nr.	Verst. f.

Datum	Name	Anschrift
18.10.35	L. v. v. v.	

RUHRBENZIN A.-G.
Oberhausen-Höfen.

Nr. ZM 10615

Erstellt für:
Erstellt durch:

Gaserhitzer.