

3445 - 30/5.01 - 100

000291

Analyses of Various Cracked
Sprouts (Graphs)

0,770

0,760

0,750

0,740

0,730

0,720

0,710

0,700

0,690

0,680

0,670

0,660

0,650

0,640

0,630

20

40

60

80

100

120

140

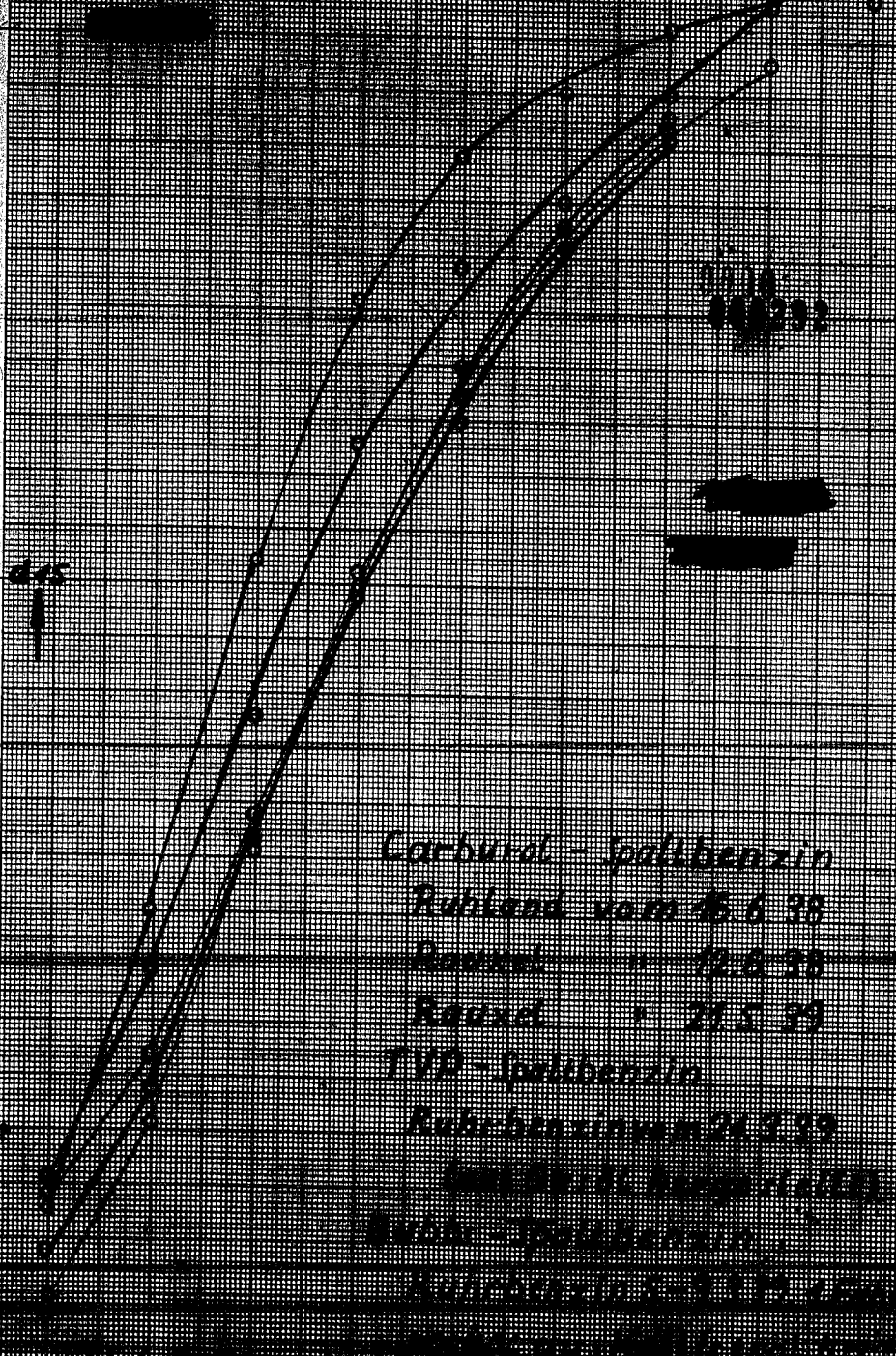
160

180

200

Spezifische Gewichte von kohlendioxidgesättigtem Spaltbenzin

Fig. 7



Carburd - Spaltbenzin
 Ruhland vom 15.6.38
 Rausch " 12.8.38
 Rausch " 21.5.39
 TVD - Spaltbenzin
 Ruhrbenzin vom 24.3.39
 Ruhrbenzin vom 10.8.39
 Ruhrbenzin vom 10.8.39
 Ruhrbenzin vom 10.8.39

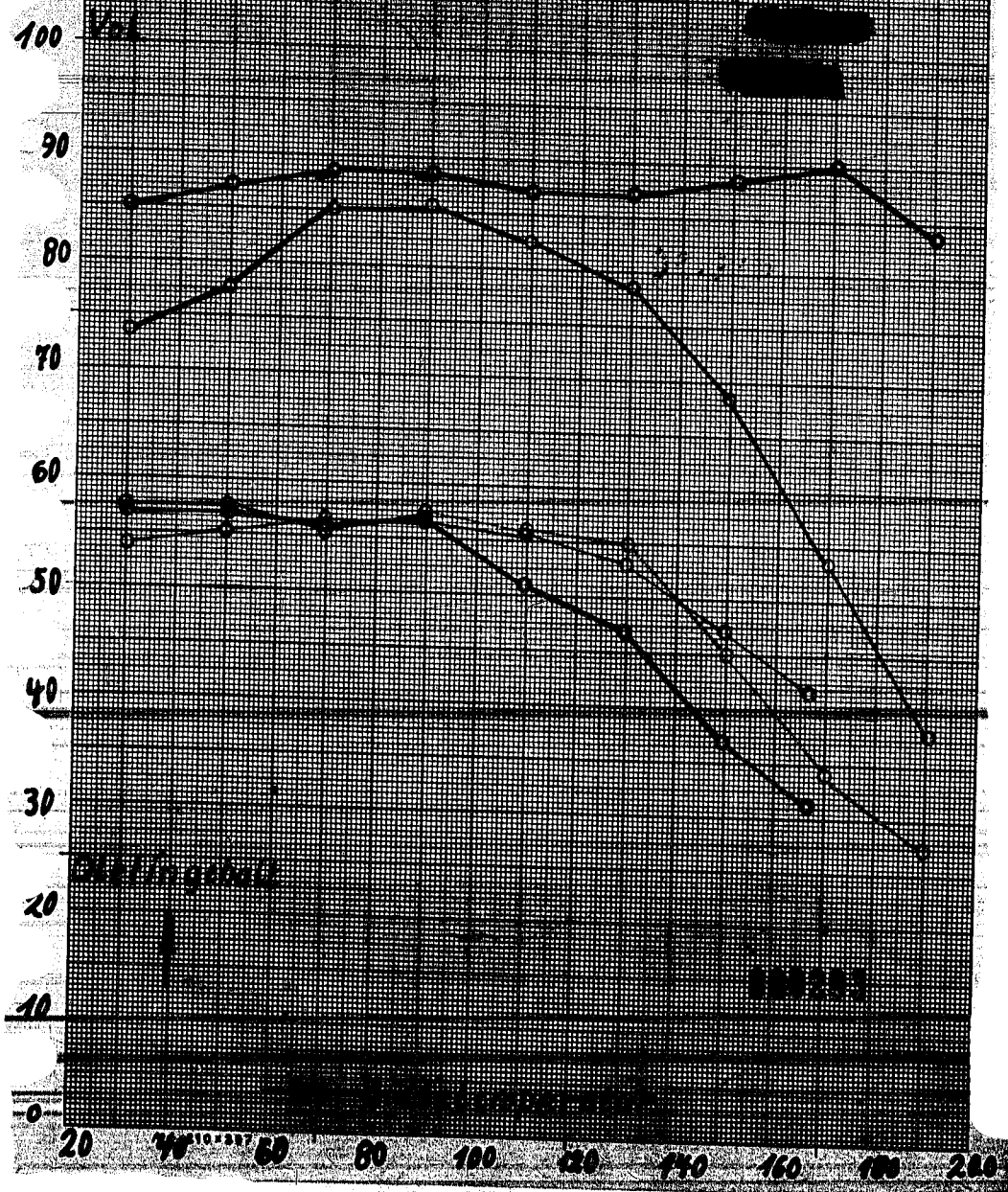
Dielectric constant of Spaltenzinc Fig. 2

(Measurements at 1000 cycles)

Dielectric constant

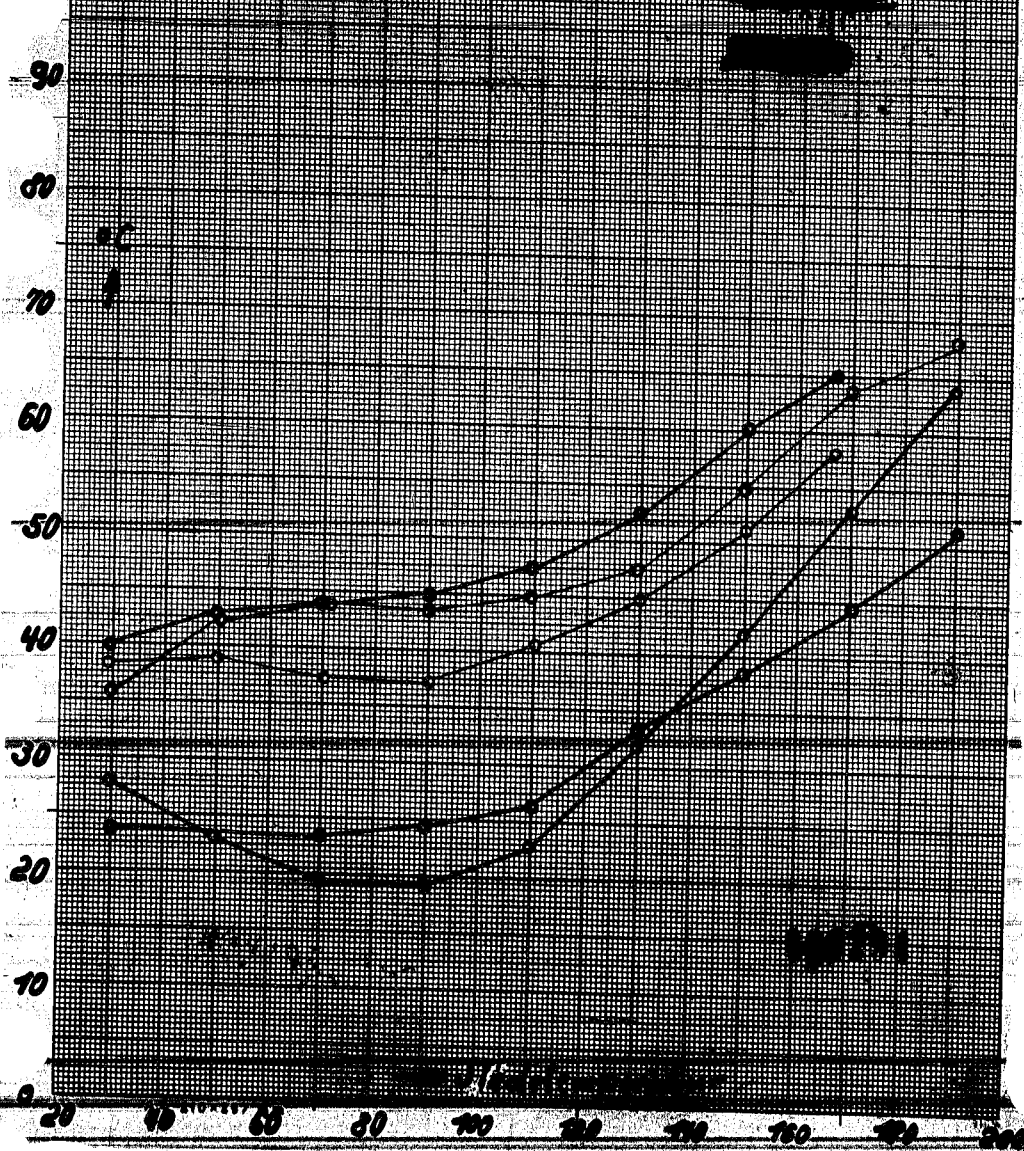
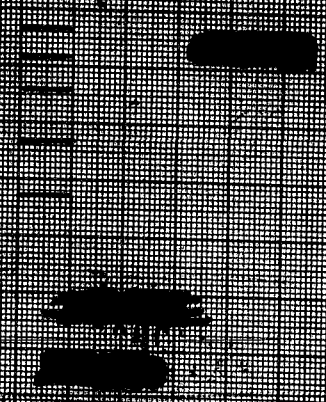
Dielectric loss

Dielectric loss



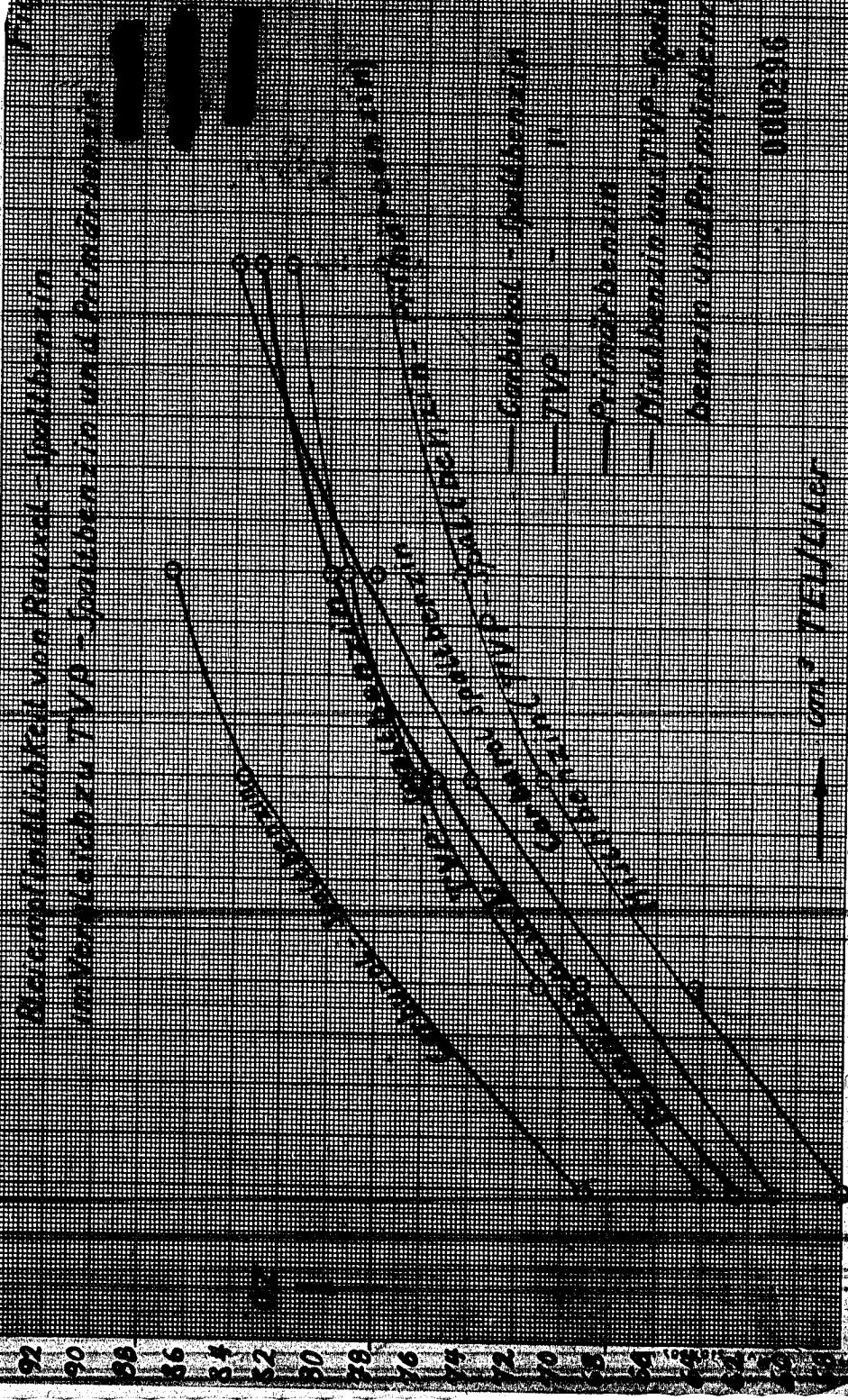
Ballpoint inkline (Ballpoint)
(Continuation of Fig 1)

Carbon (Ballpoint)
SP
SA



Berechnungsdichte von Raueis - Spaltbreiten
 unterschiedlicher TWP - Spaltbreiten und Primärbreiten

TWP



92
 90
 88
 86
 84
 82
 80
 78
 76
 74
 72
 70
 68
 66
 64
 62
 60

0.1 0.2 0.3 0.4 0.5 0.6 0.7 0.8 0.9 1.0 1.1 1.2

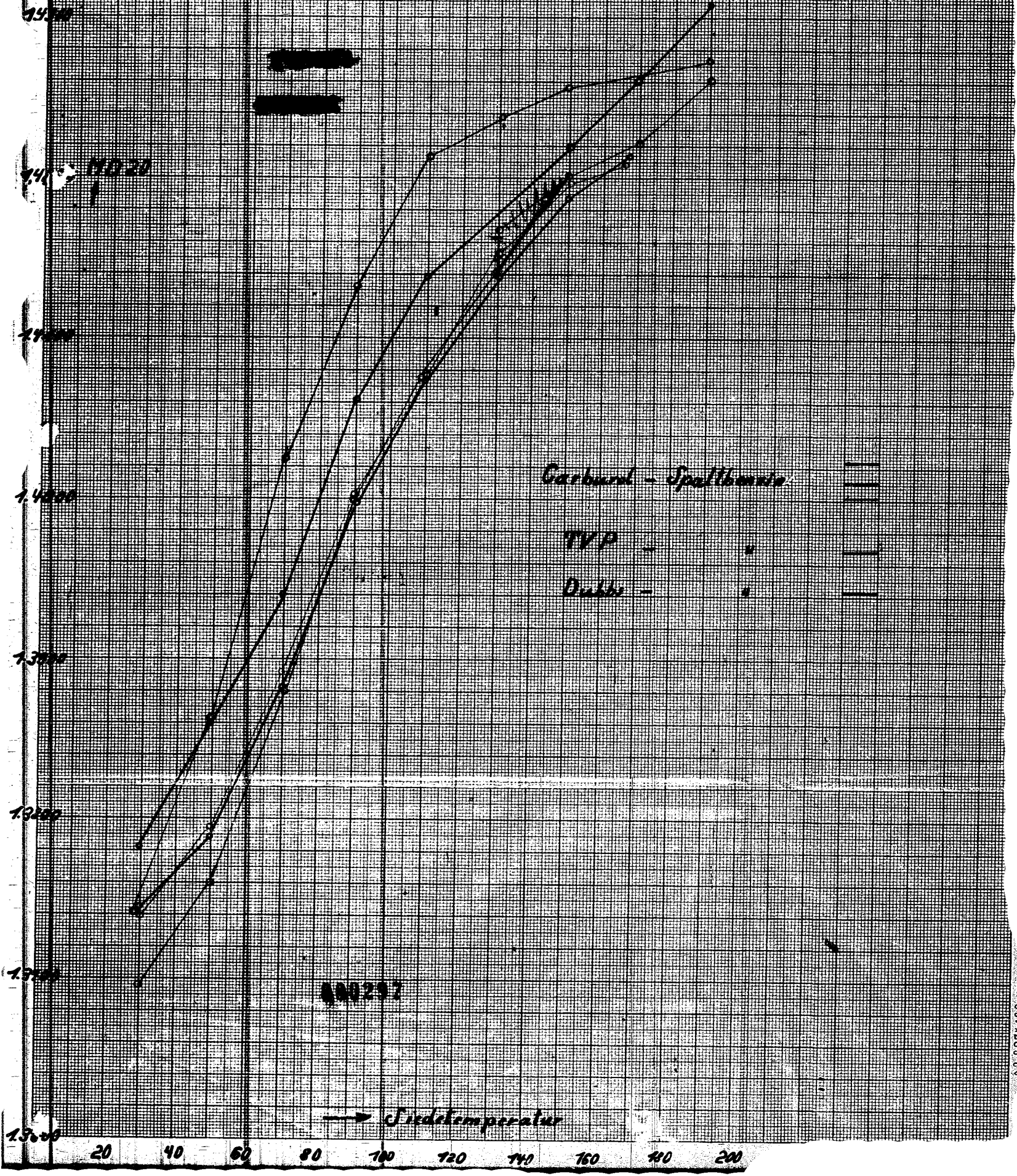
cm TWP

000296



Fig. 5

Refraktion verschiedener Spaltbenzine
(Bezeichnung vgl. Fig. 1)



A3 297 420 mm