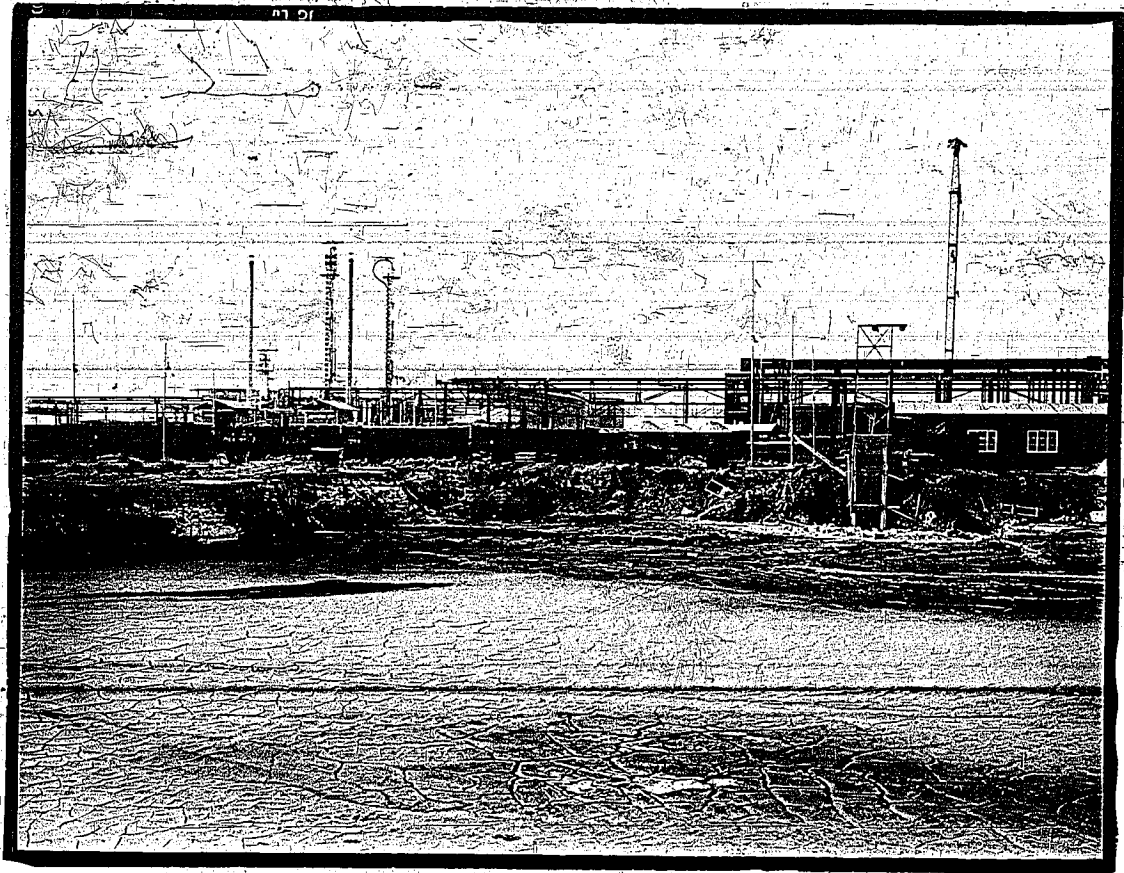


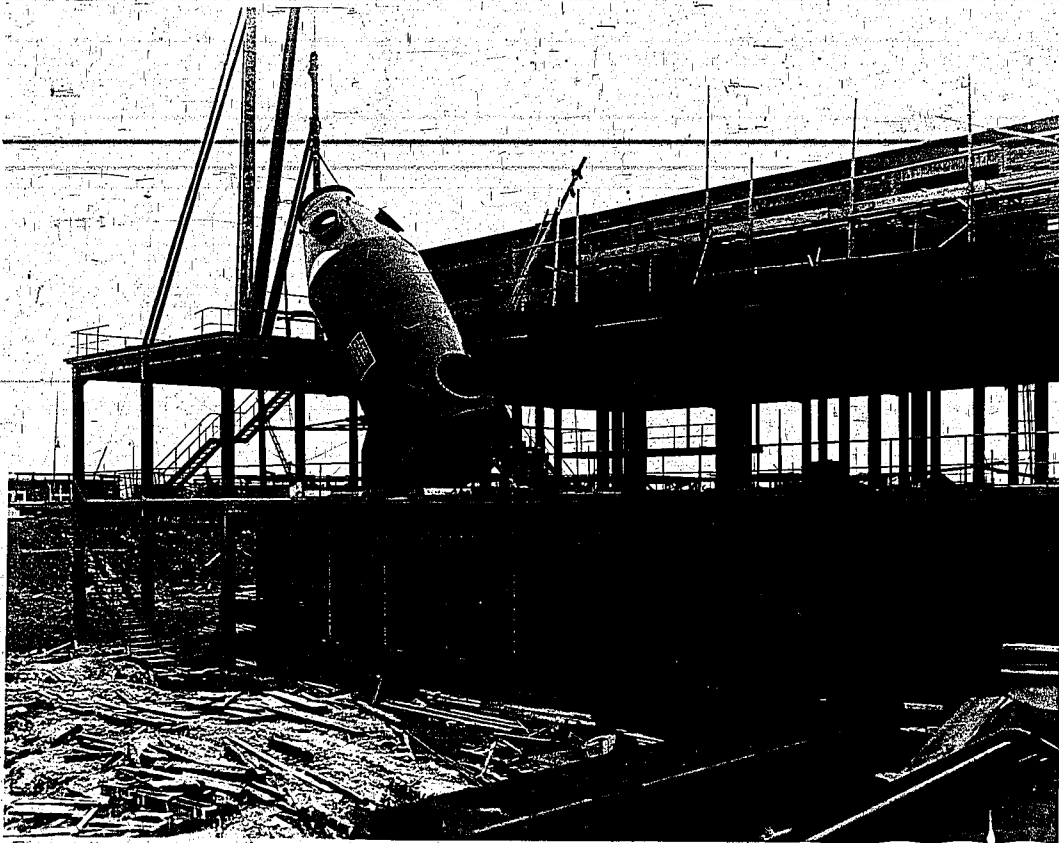
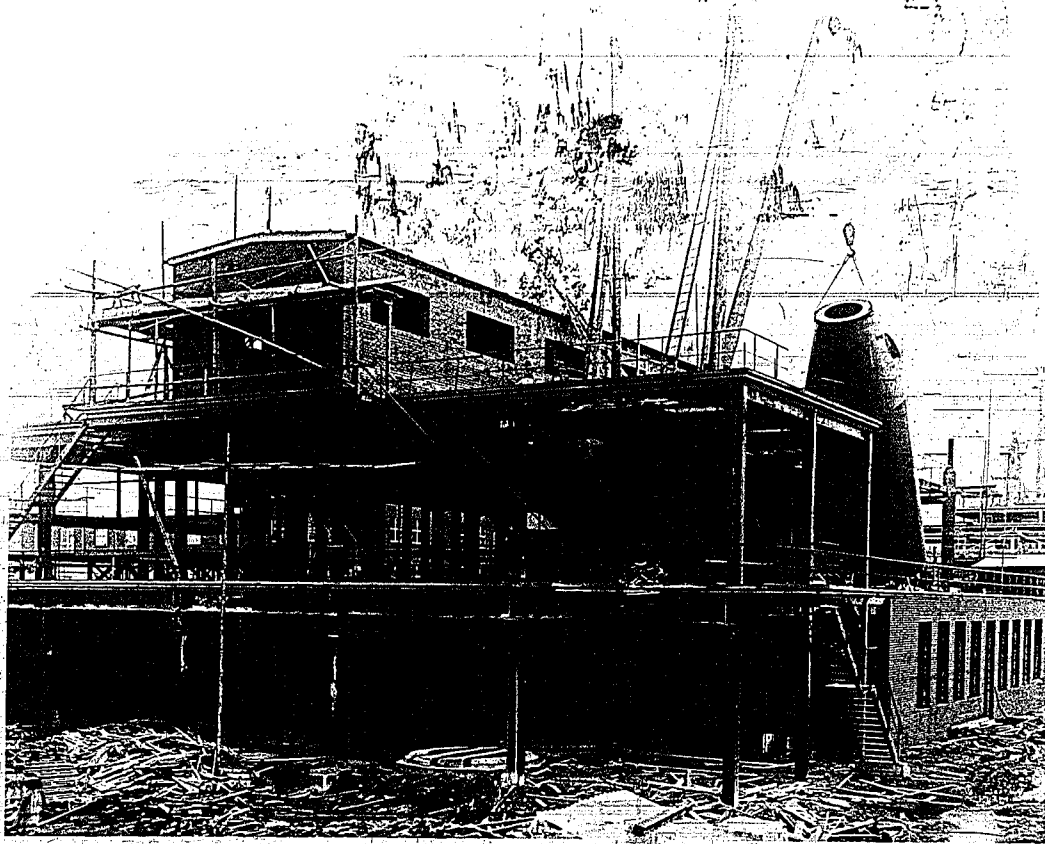
19-28 A - 41

410000248



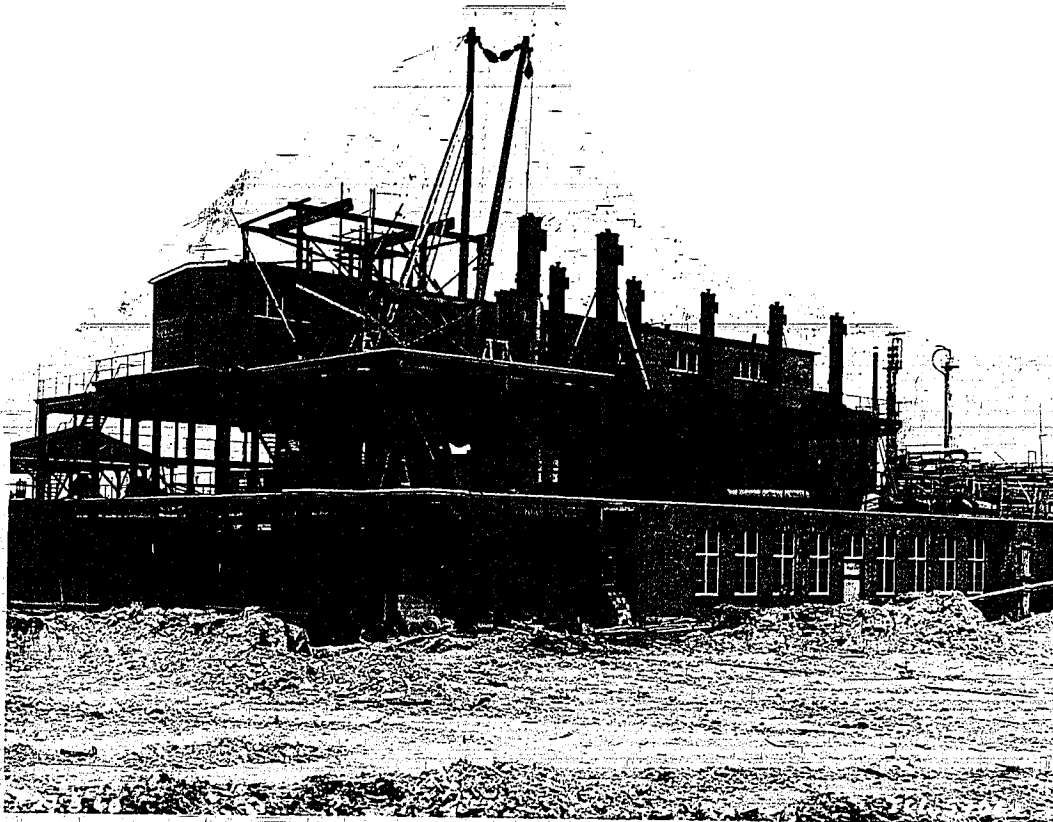
Erster Spatenstich 1. Dez. 1938

410000249

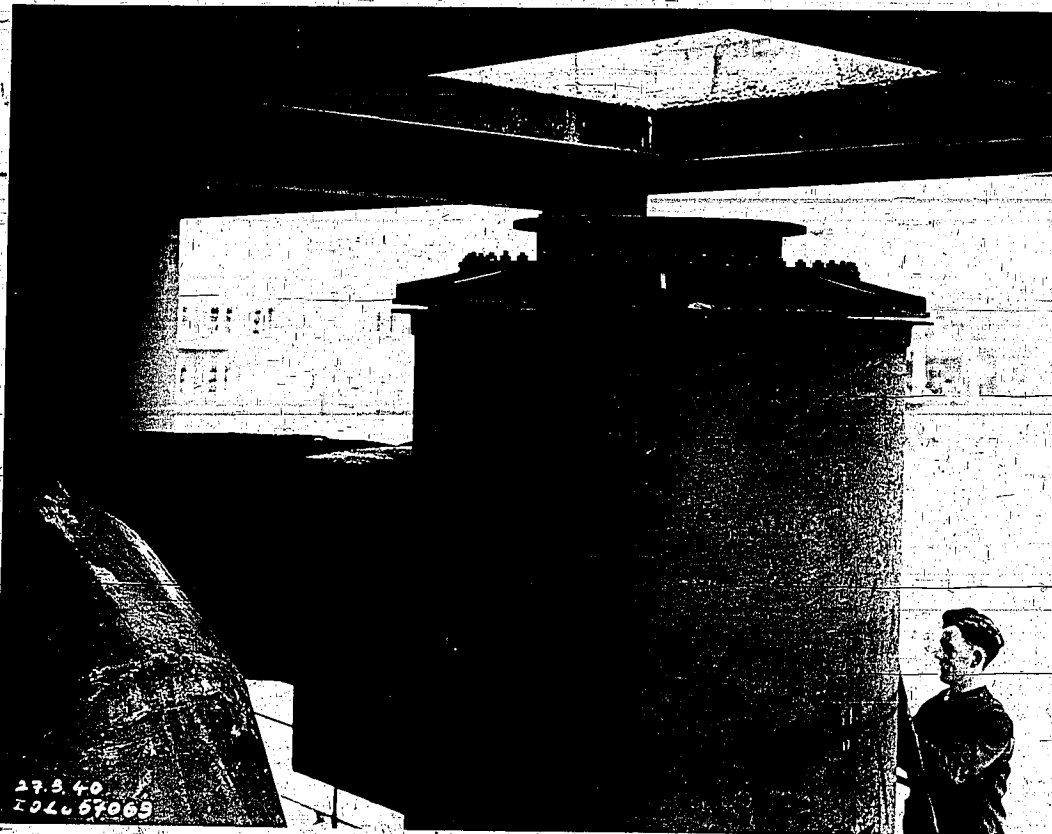


4. Dezember 1939 - Montagebeginn

410000450



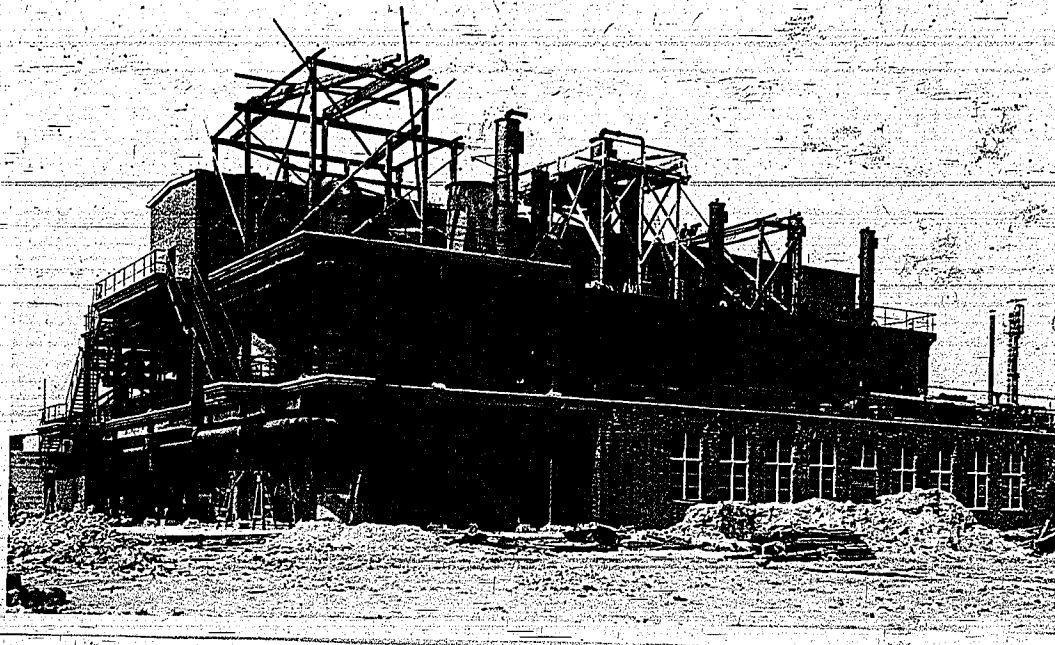
1. 4. 1940



27.5.40
207.57069

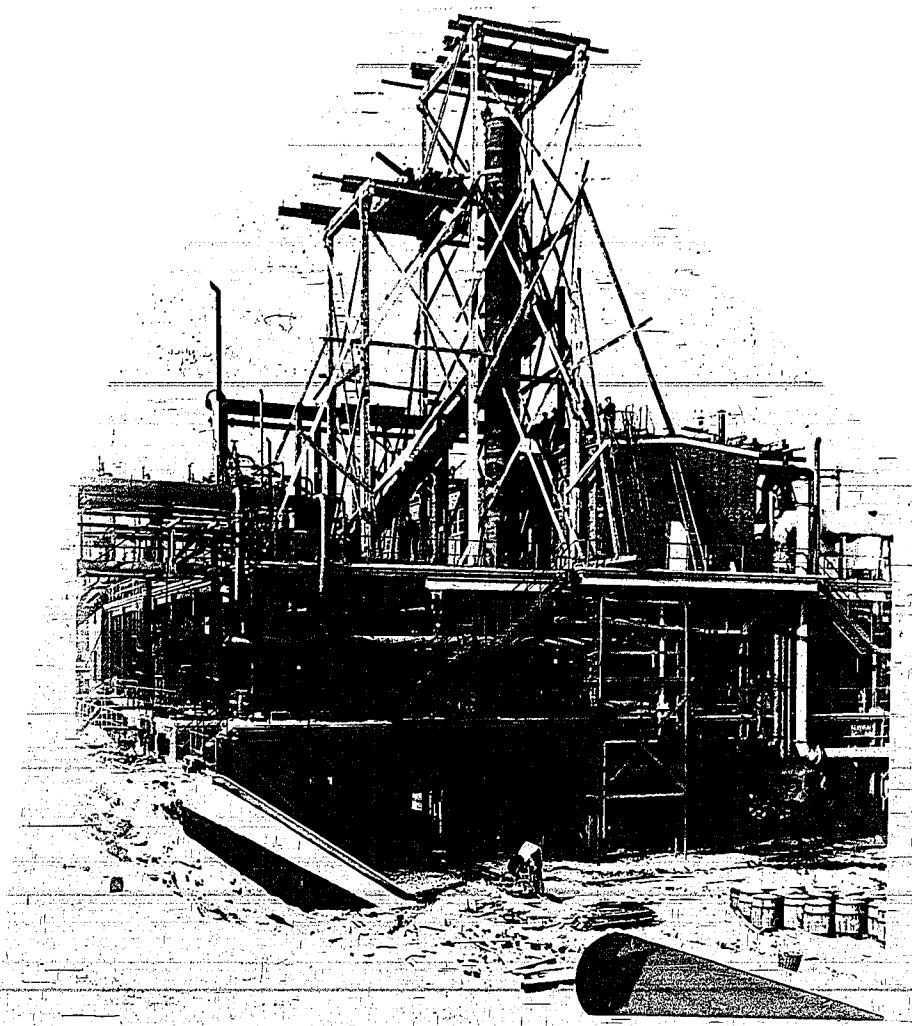
1. 4. 40 - Wärmeaustauscher der Nachverbrennung

410000251

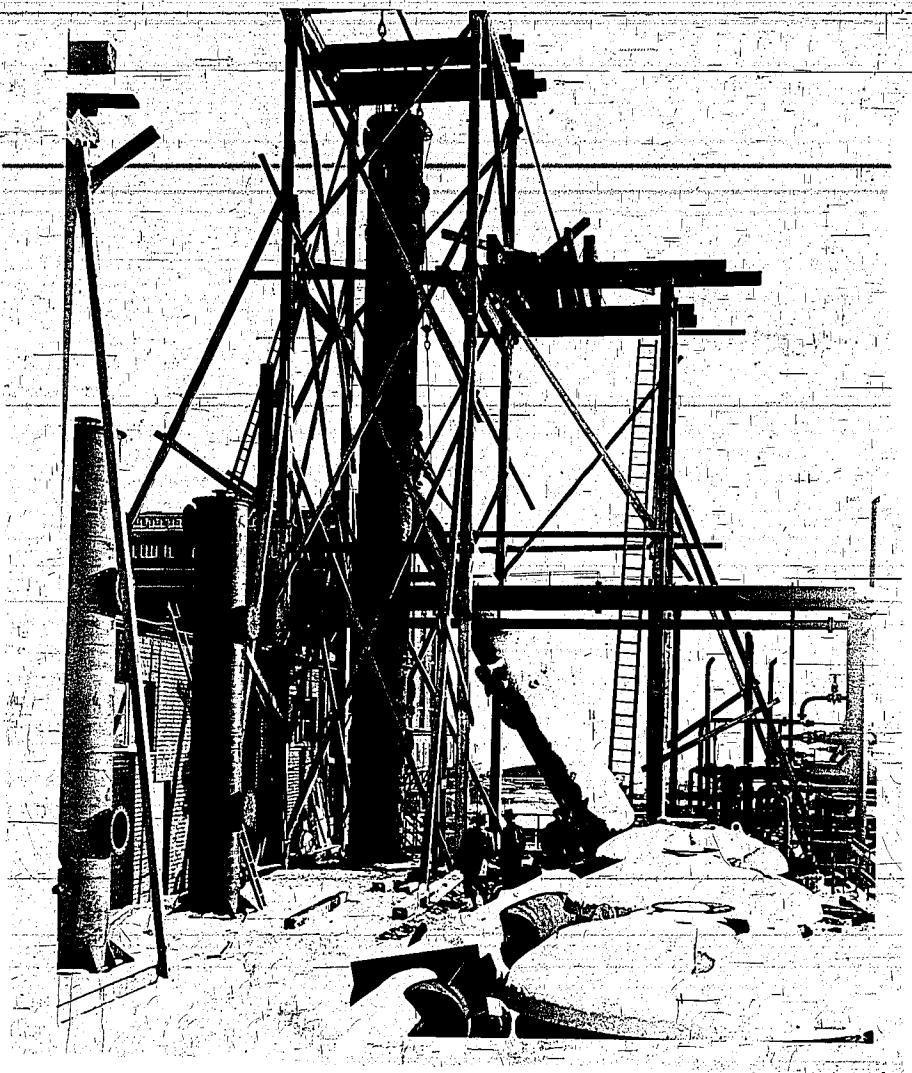


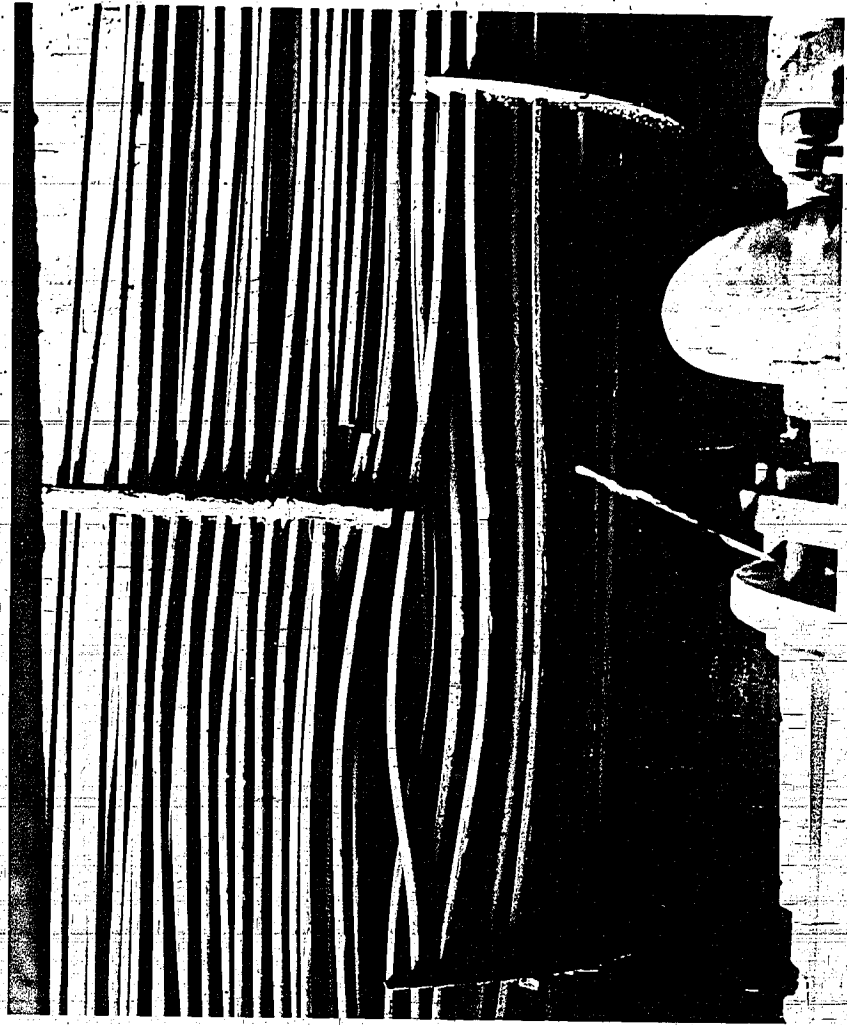
Bauzustand
1.7.1940





Montage der Wascher
Dezember 1911





Wärmeausstauscher 70
Belm...

