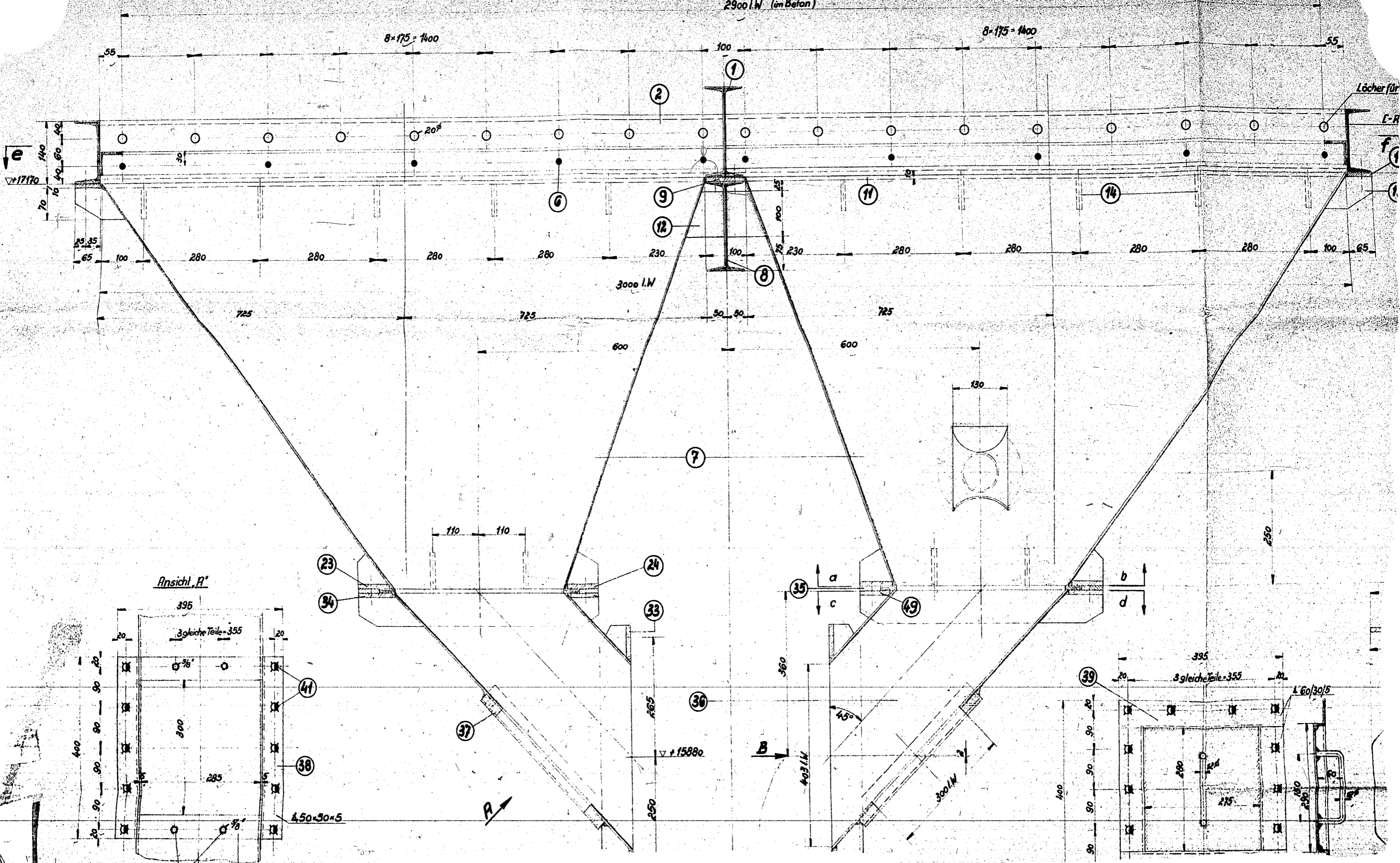


250000228

2900 I.W. (im Beton)

8-175 = 1400

8-175 = 1400



Löcher für

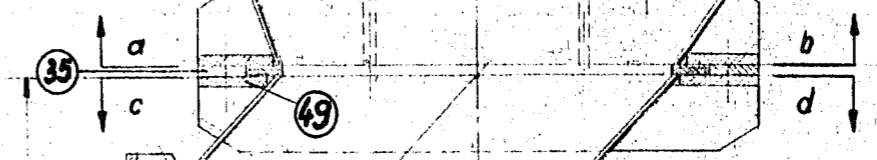
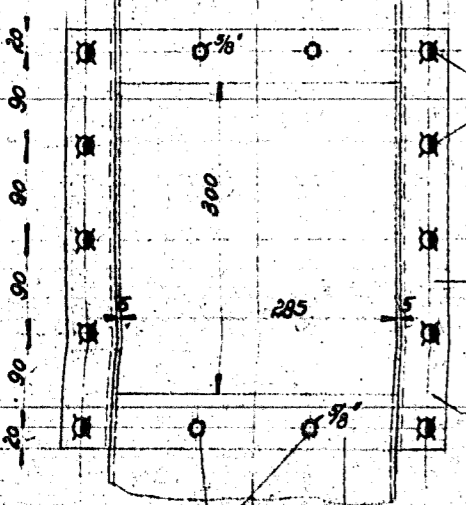
L-R

f

Ansicht A'

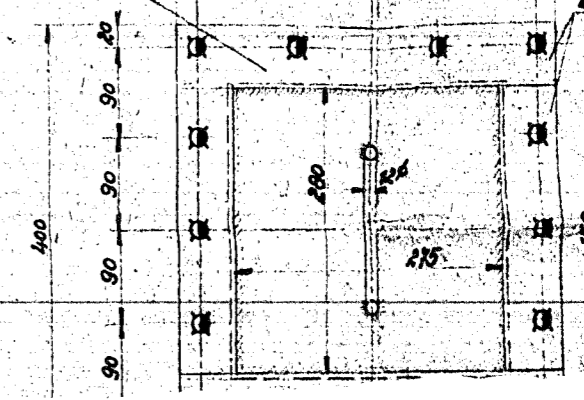
395

3 gleiche Teile - 355



395

3 gleiche Teile - 355

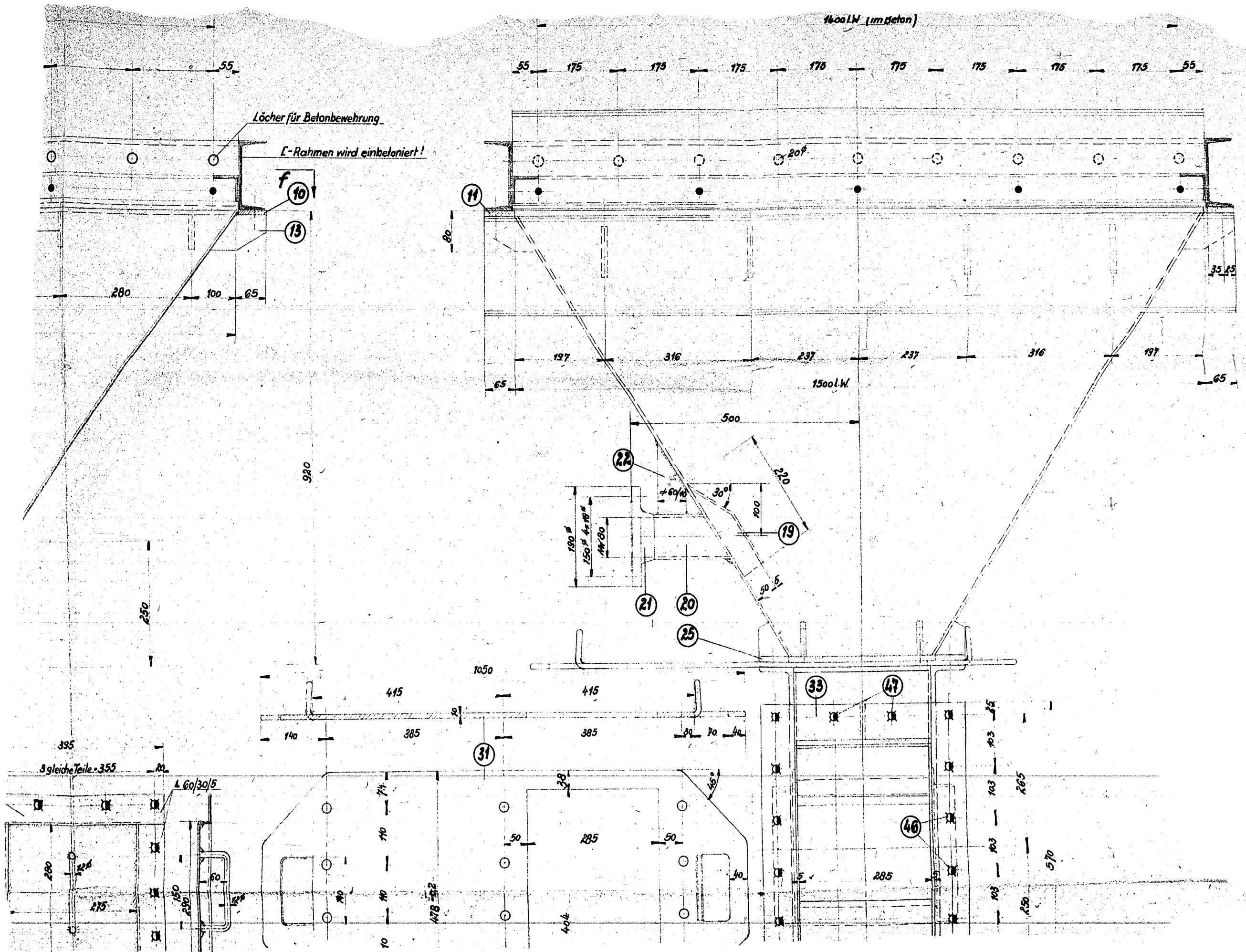


A

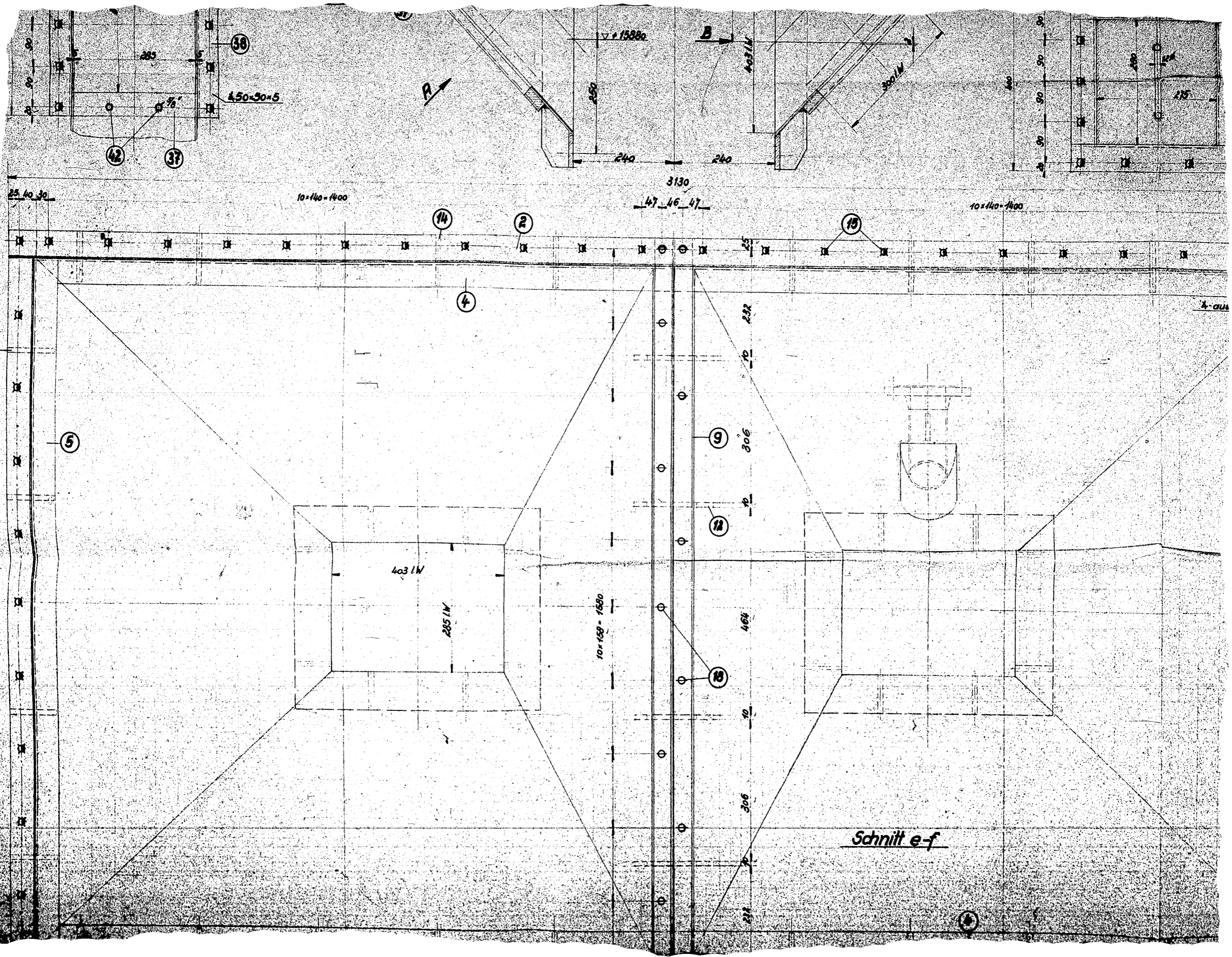
A

B

L 60/30/5



B



38

42

37

A

B

450x50x5

▽ p 15880

250

403 IW

300 IW

240

240

3130

47-46-47

10x140-1400

25 40 30

10x140-1400

14

2

15

13

5

4

9

306

12

403 IW

285 IW

10x158-1580

464

18

306

10

464

10

306

232

10

Schnitt e-f

4. aus

