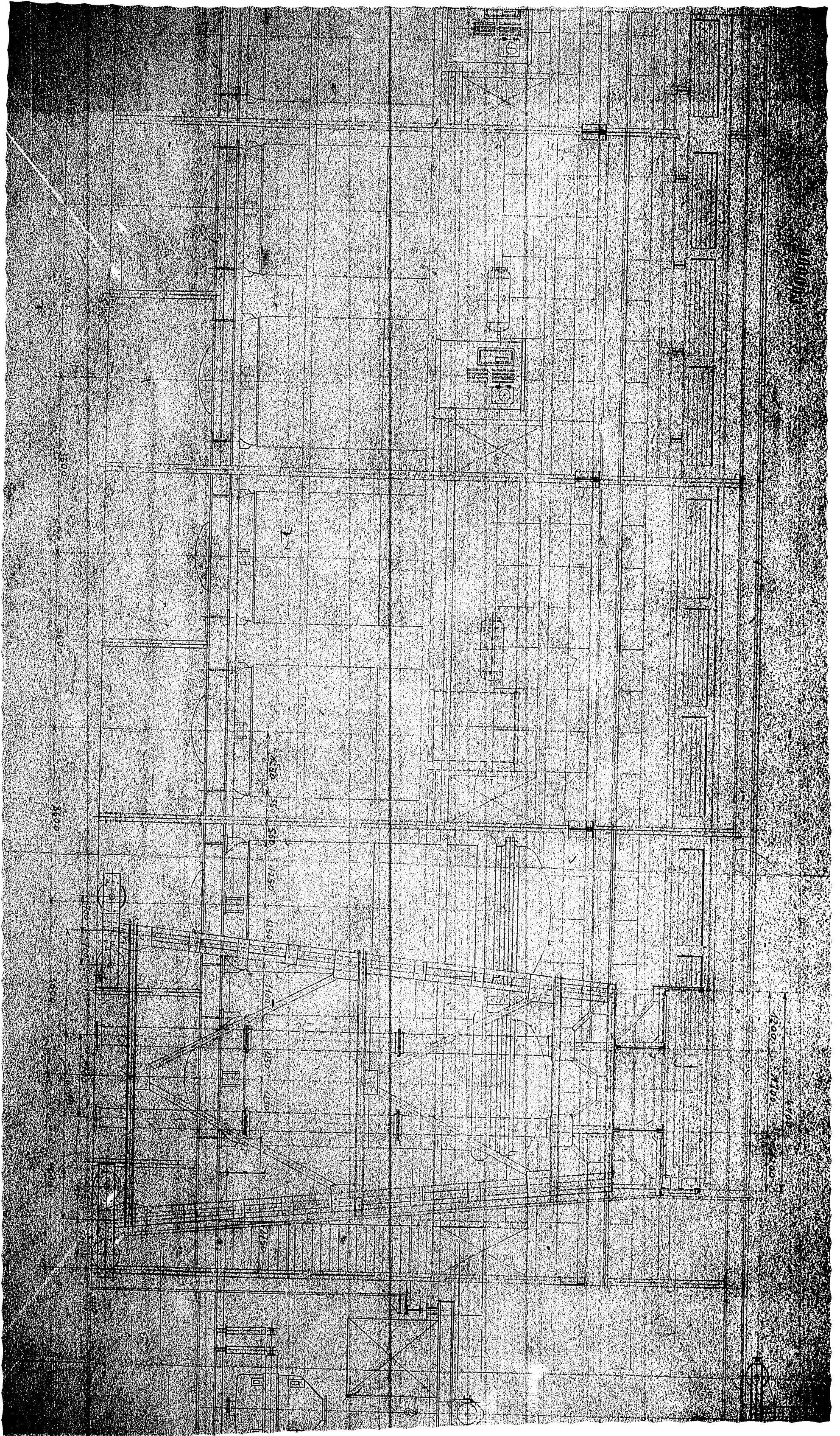


2276 - 30/5.01 - 2

Drawings of Synthesis Over
House.

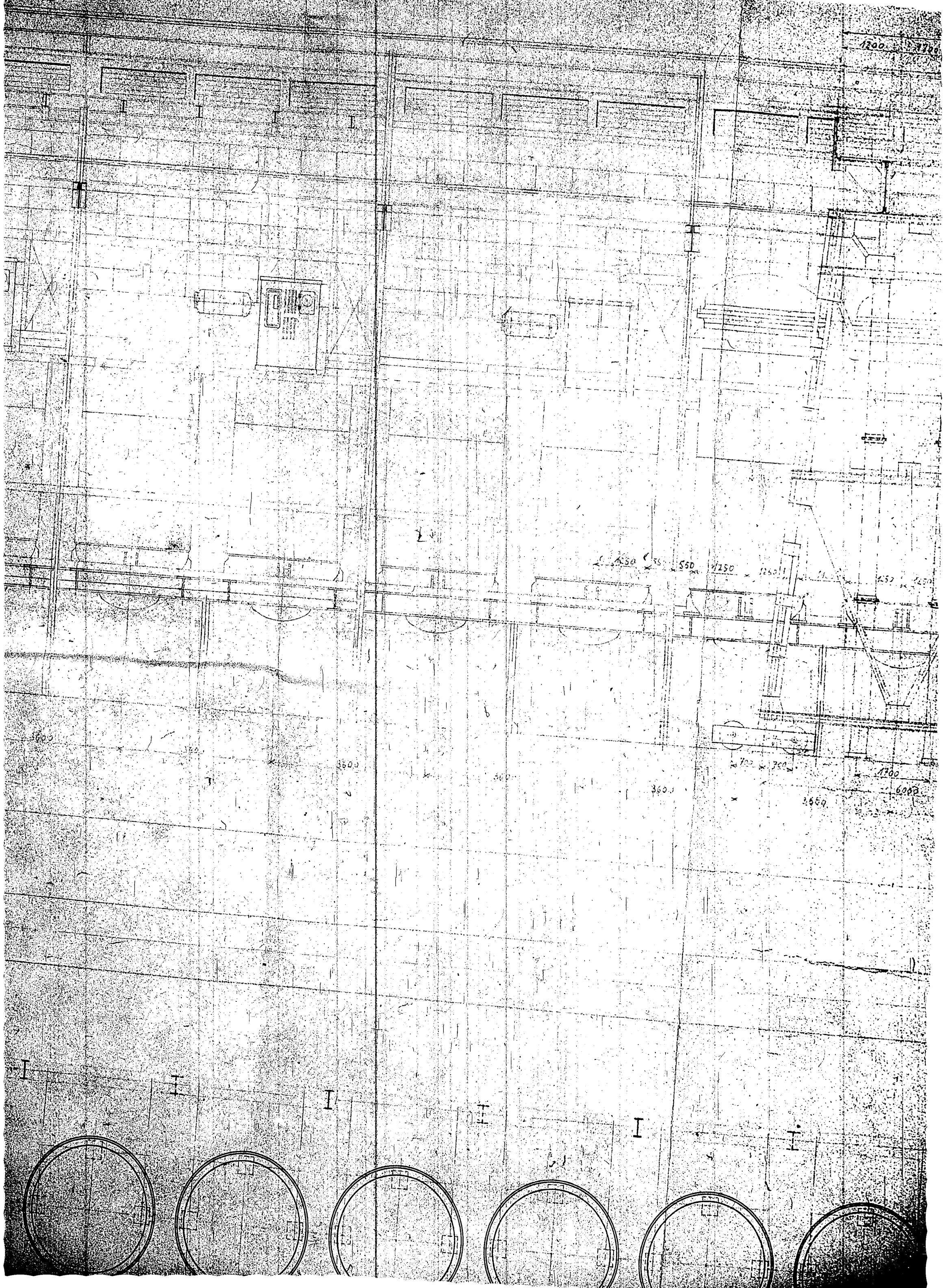
000002

Doc 11

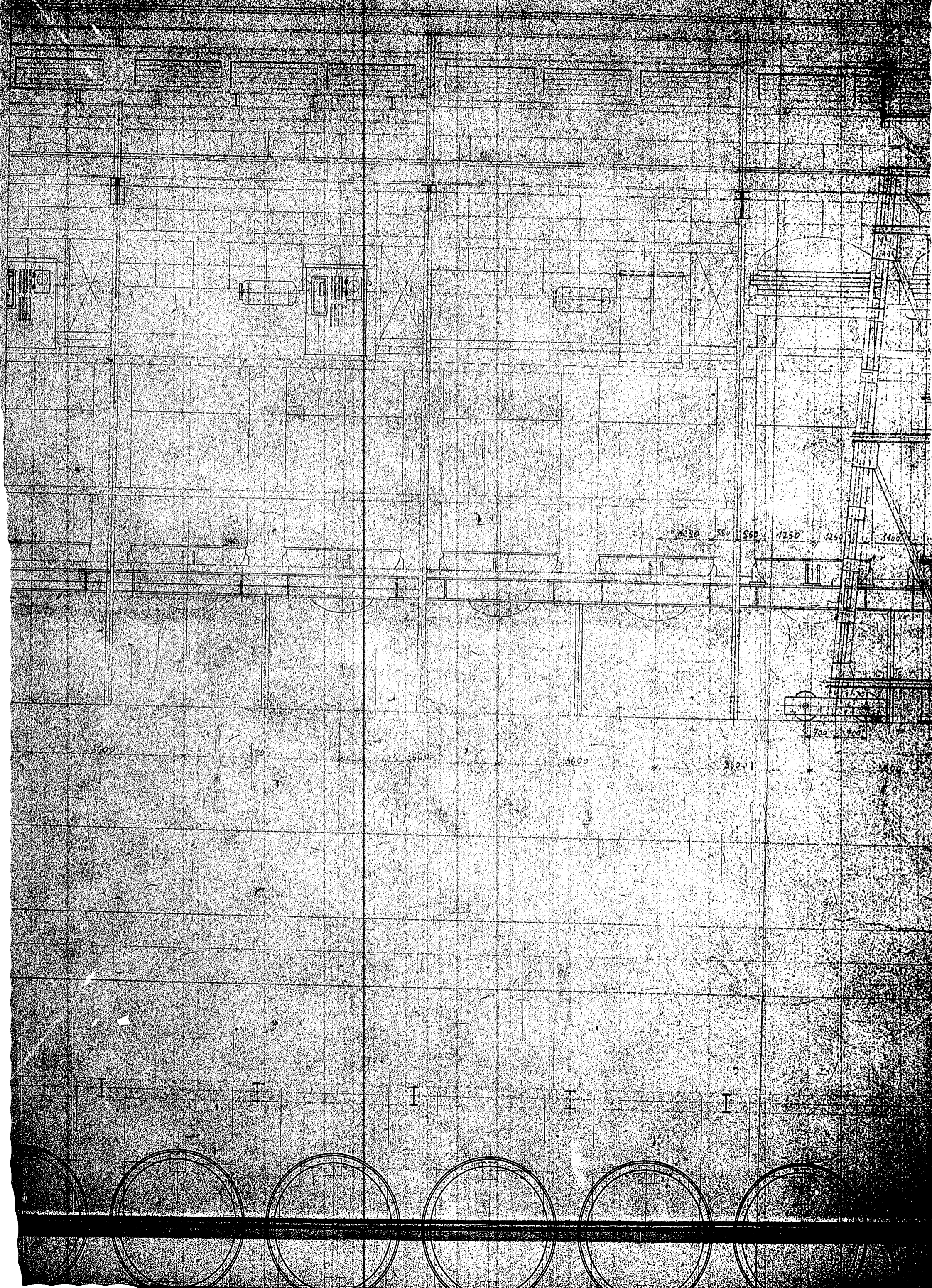


000003

1200 1700

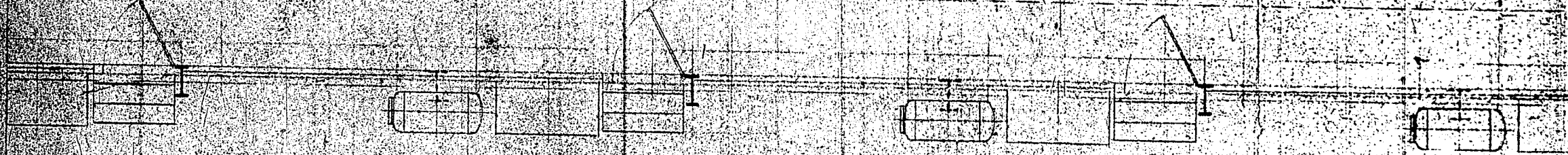
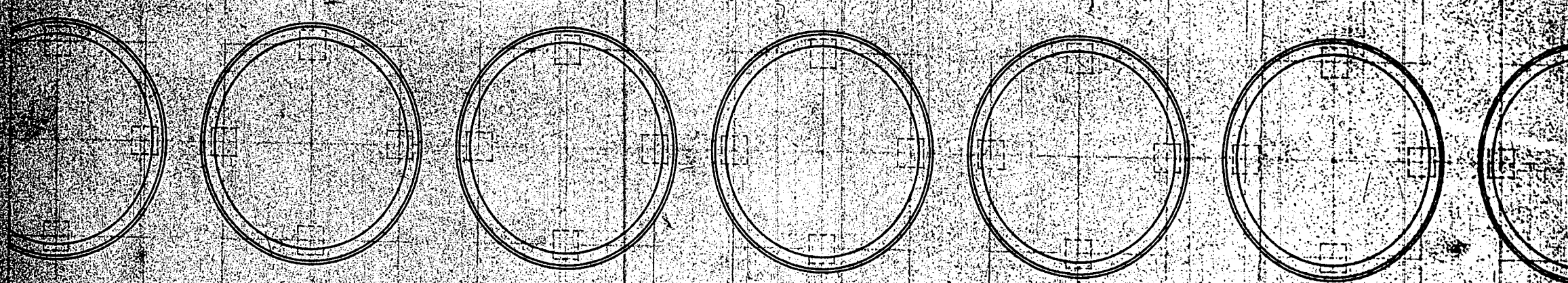


000003

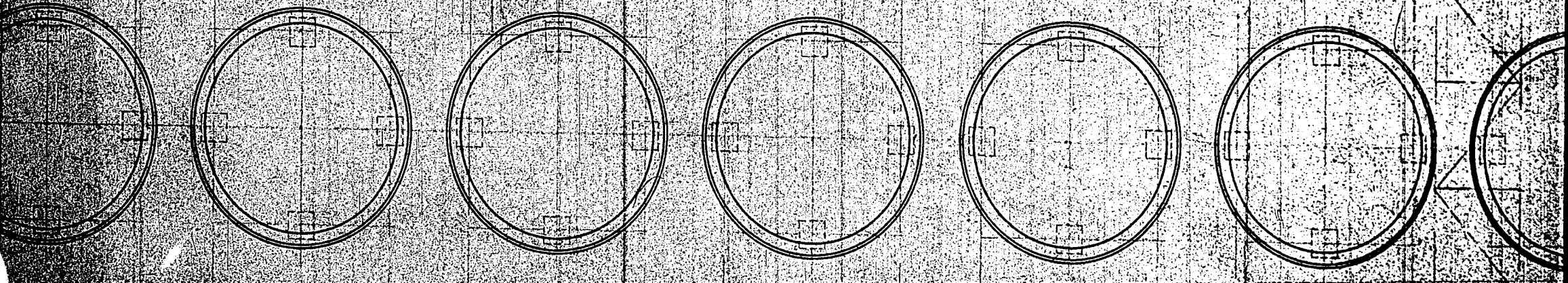
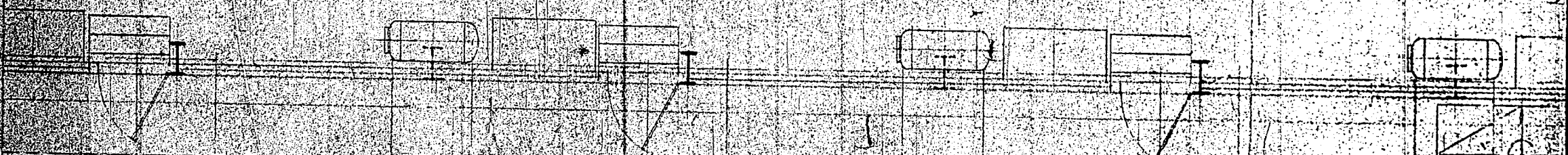


3200 3600 3600 3600

I I I I I I I

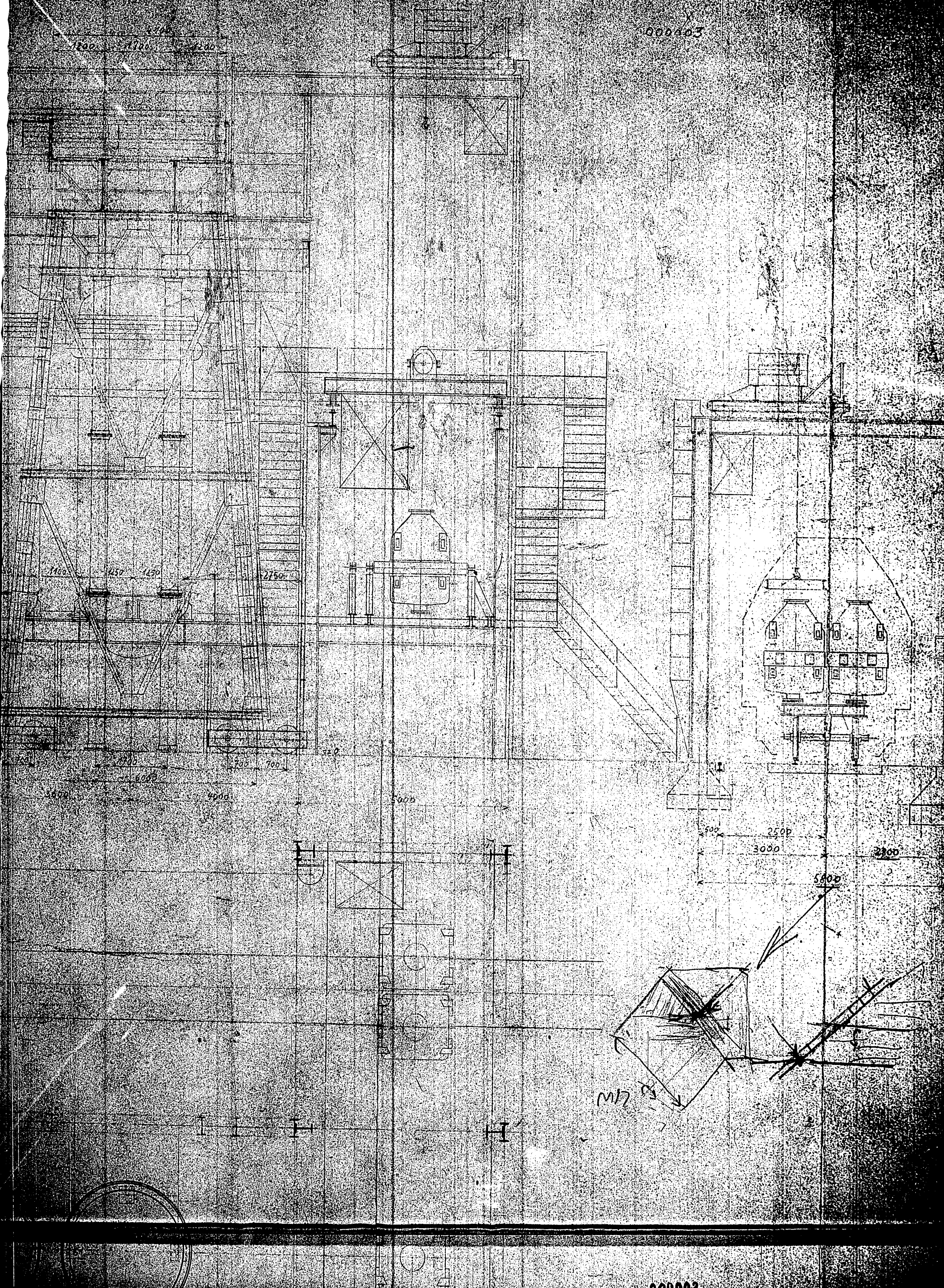


000003



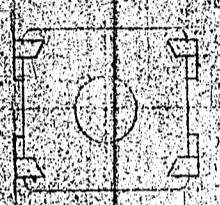
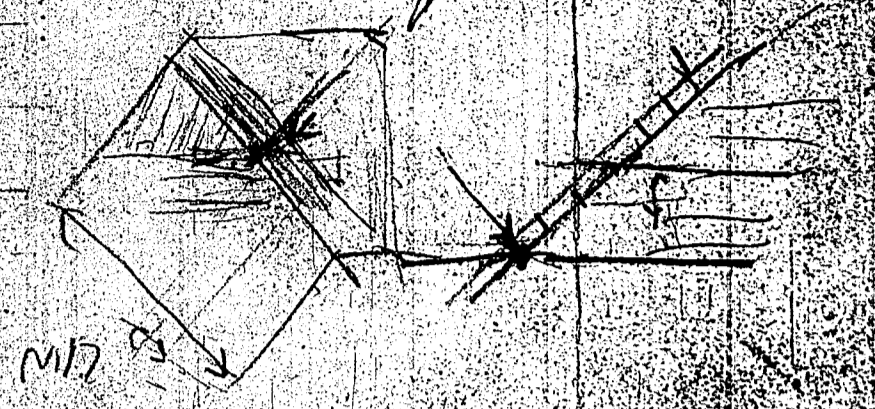
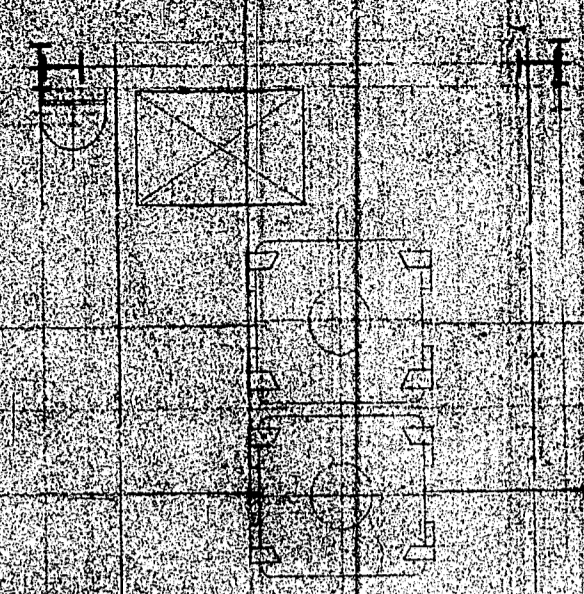
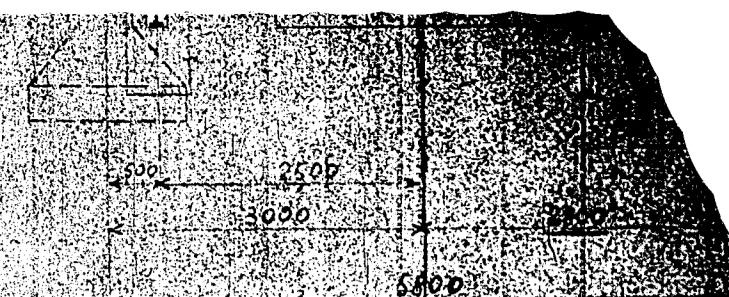
I I I I I I I

000003

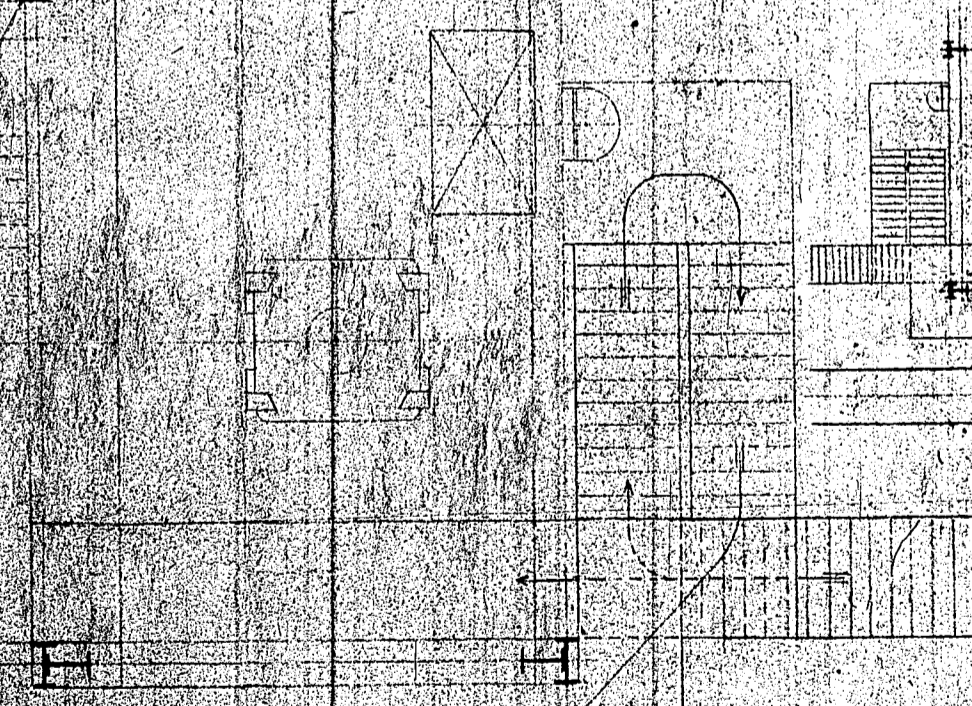
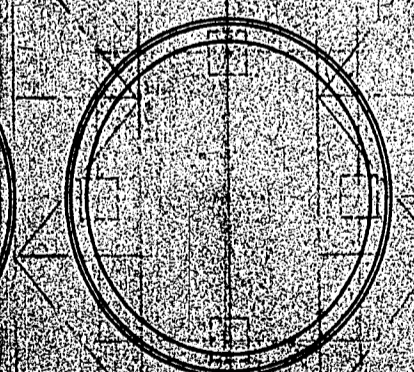
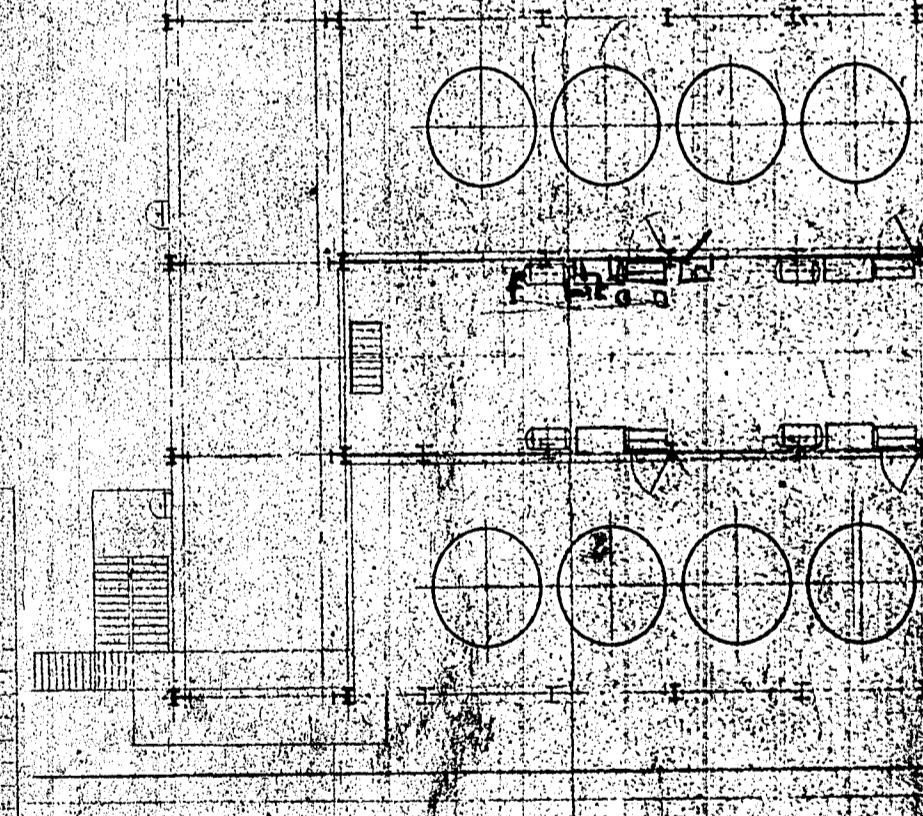
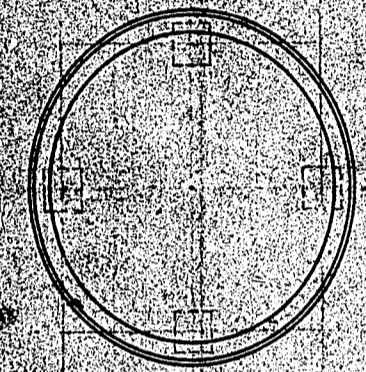
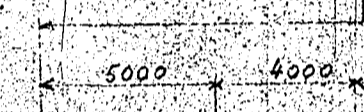


000003

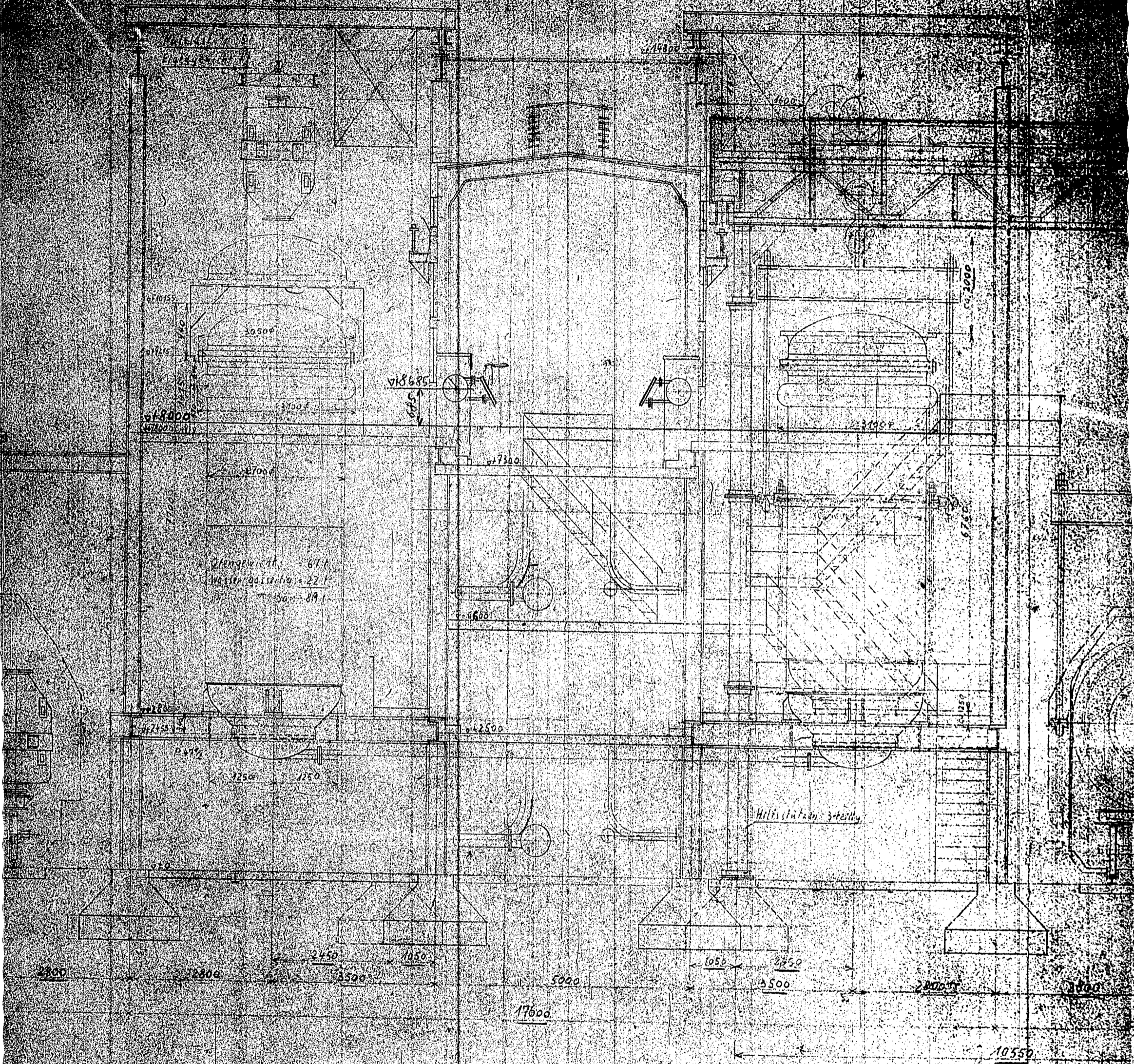
4000 5000

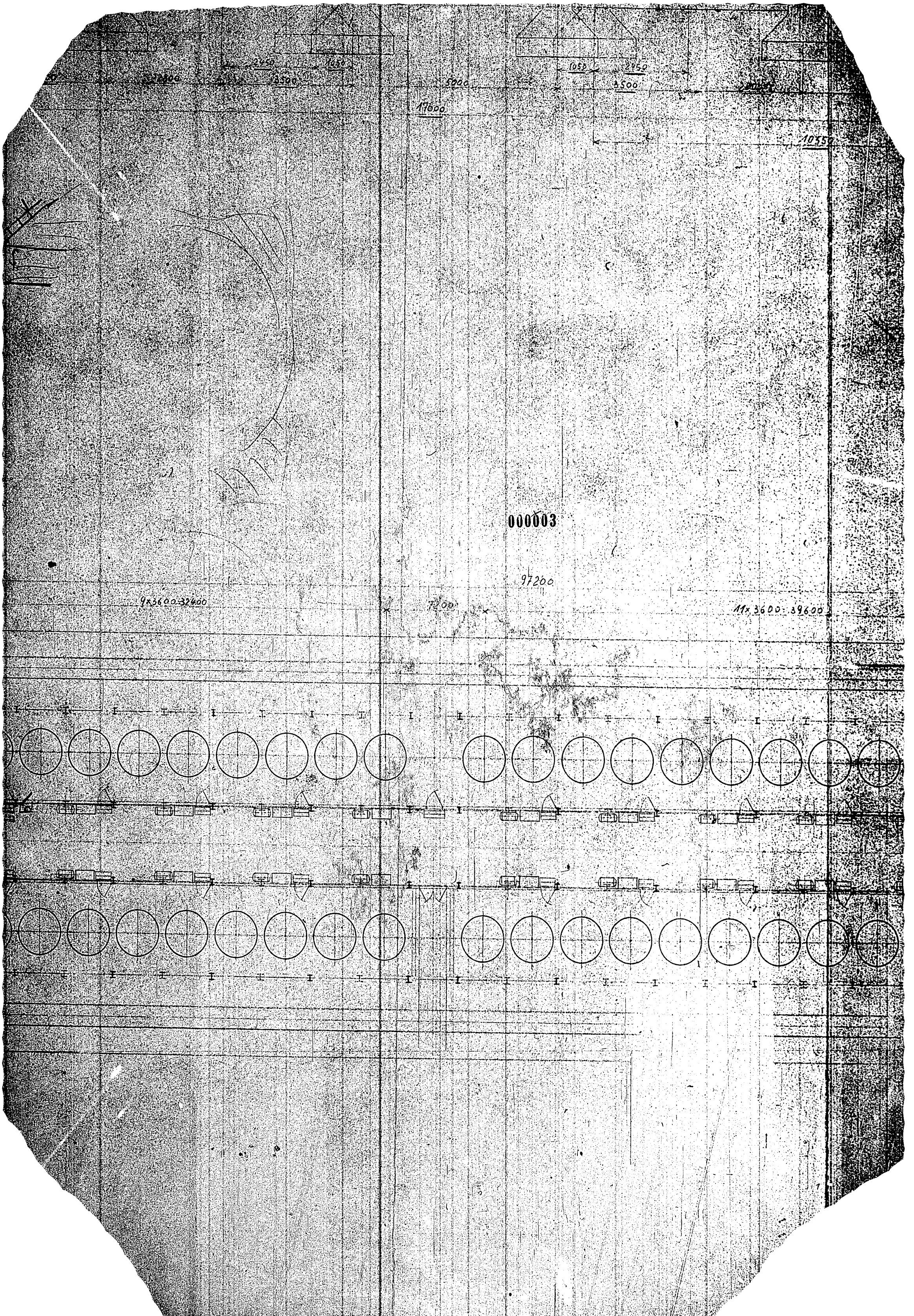


000003



000003





000003

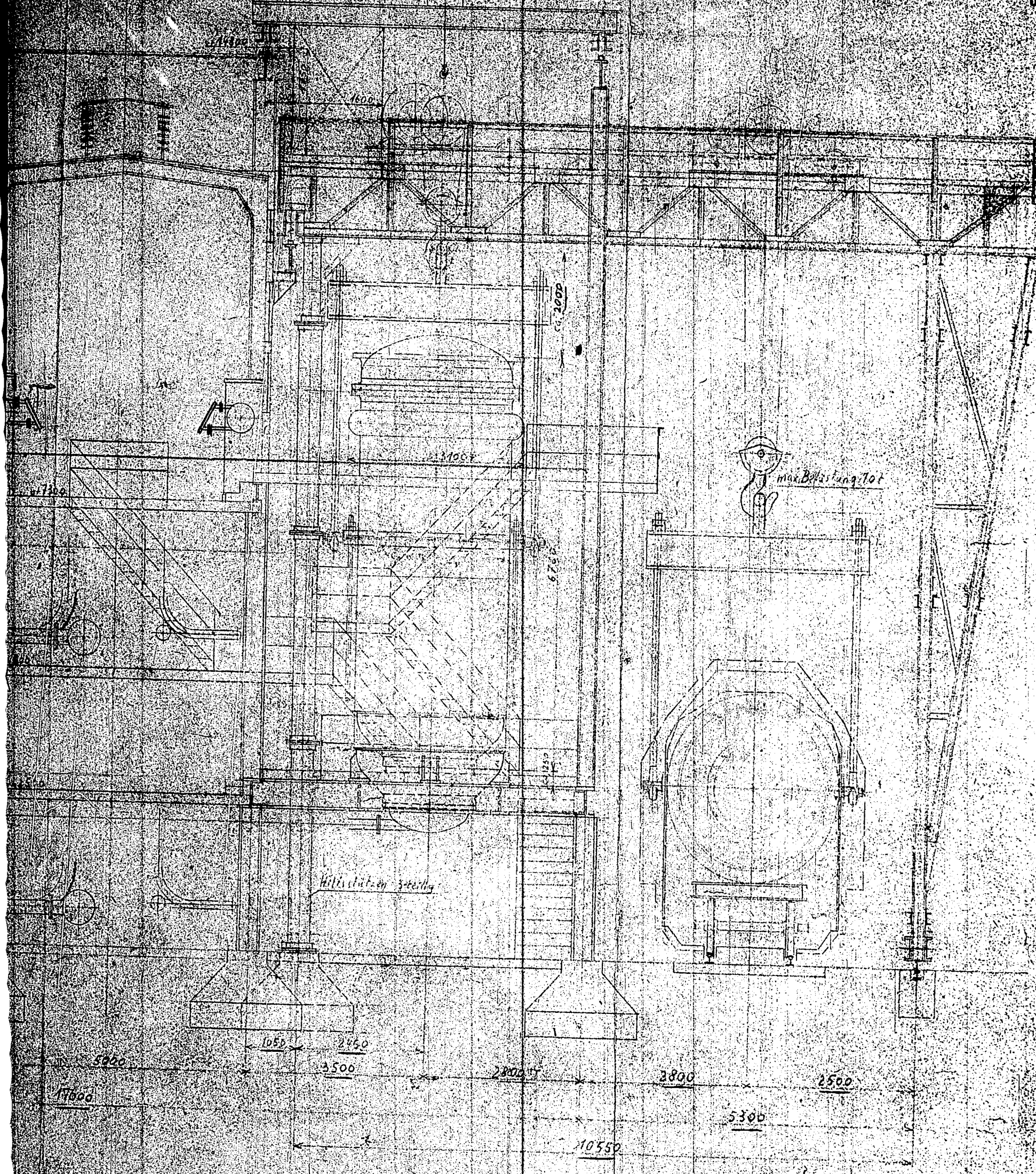
97200

9x3600-32400

7200

11x3600-39600

00003



Hilfsknoten 3-stufig

max. Belastung 10t

5000

1050

2450

3500

2800

3800

2500

5300

10550

1700

000003

000003

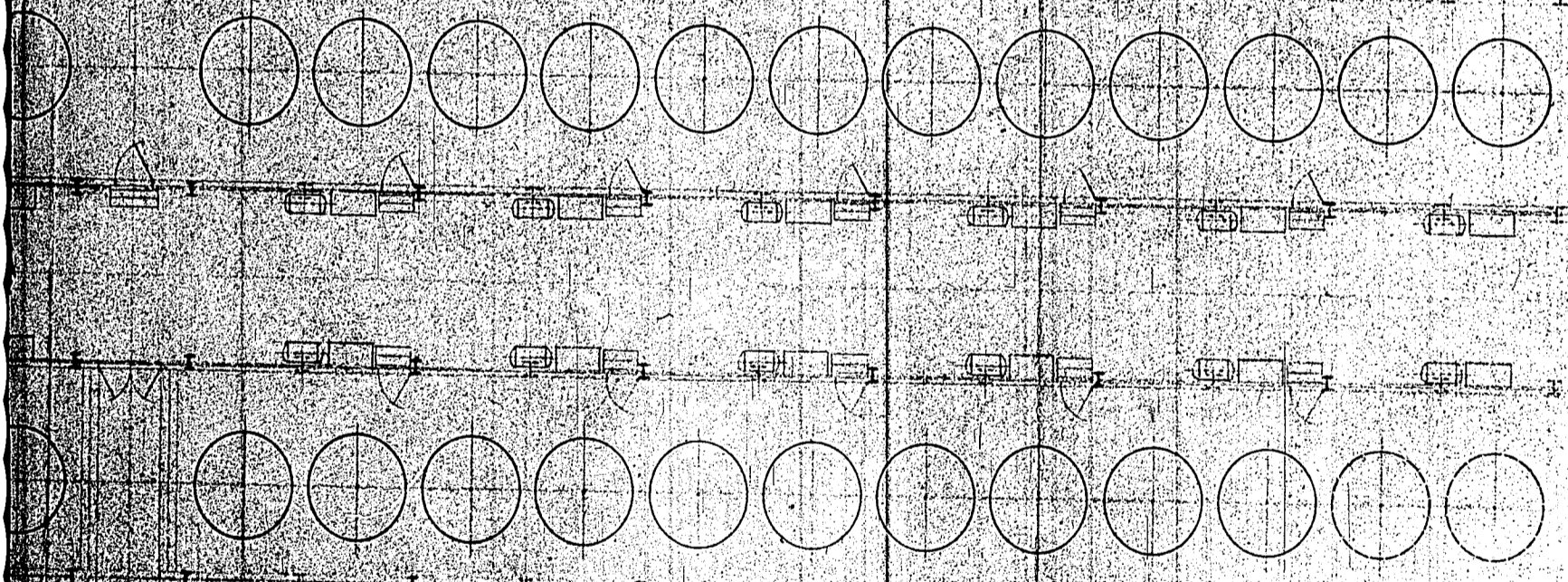
97200

7200

11x3600-39600

4000

5000



6300
5000
6300
17692

000

2750

5500

2000

2000

2500

5300

10550

~~000003~~
000004

Beschickungskübel

Dampfammer

Anschluß Öl-Schlauchs

Antipassierle

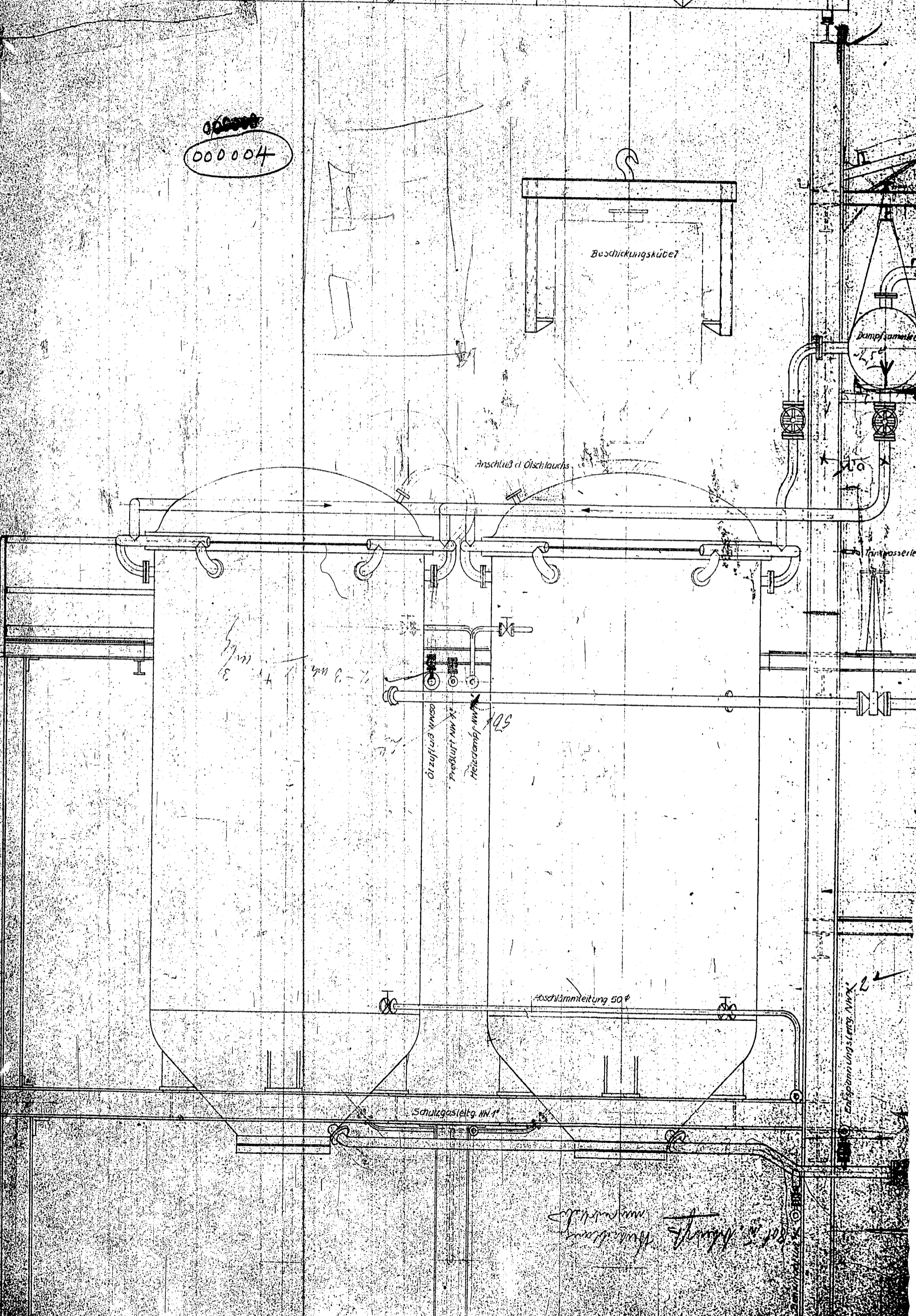
Ölzufuhr NWS
Preßluft NWS
Heizdampf NWS

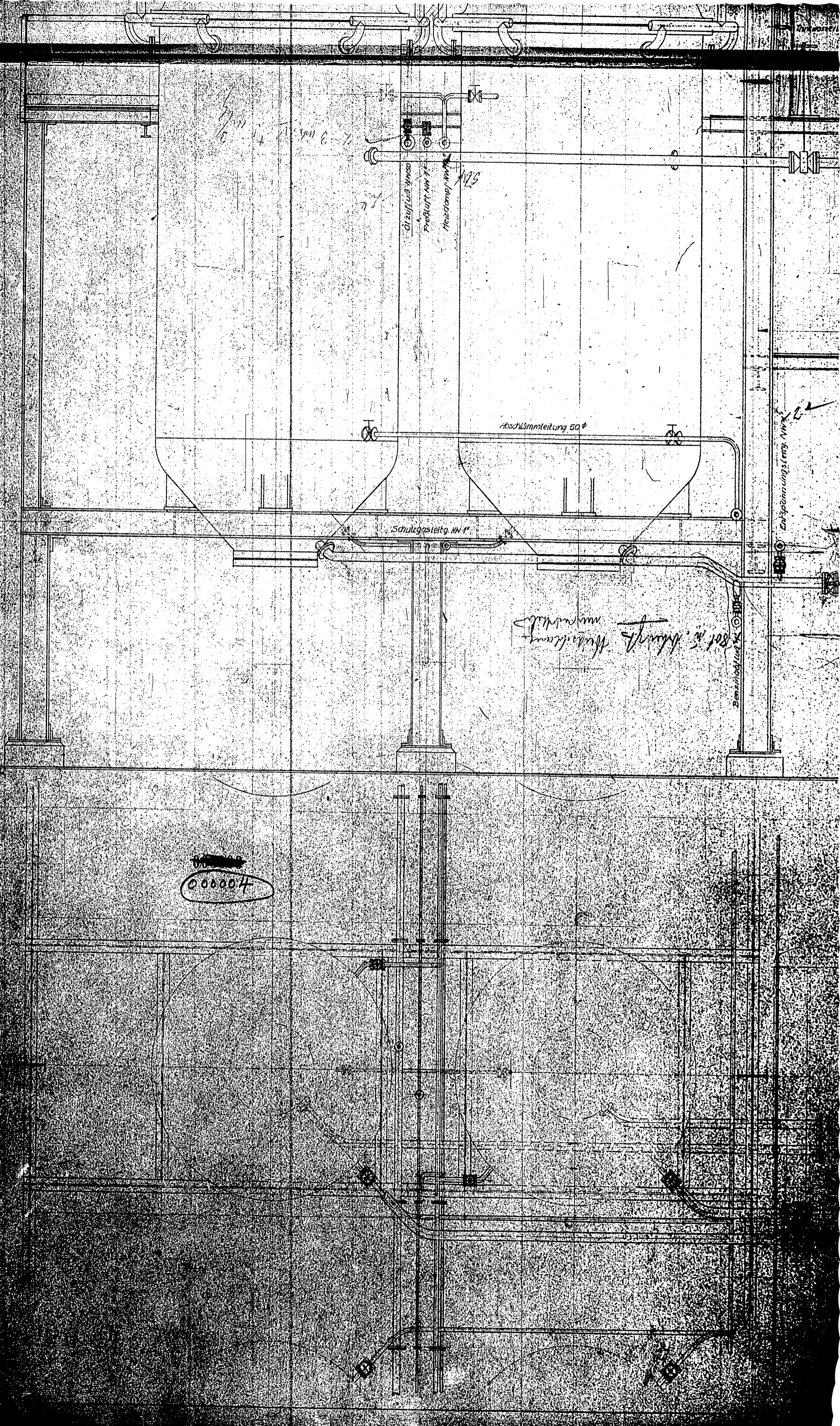
Abschlämmeleitung 50φ

Schutzgasleitg. NWS 1"

Entspannungslinie NWS

Prof. Dr. K. Kumpf
Hauptkammer
München





1/2" NW 100
Fruchtluft NW 1"
Heizdampf NW 1"

Zuluft 1/2" NW 100
Fruchtluft NW 1"
Heizdampf NW 1"

Abschleimleitung 50φ

Schutzgasleitg. NW 1"

Entspannungsleitg. NW 1"

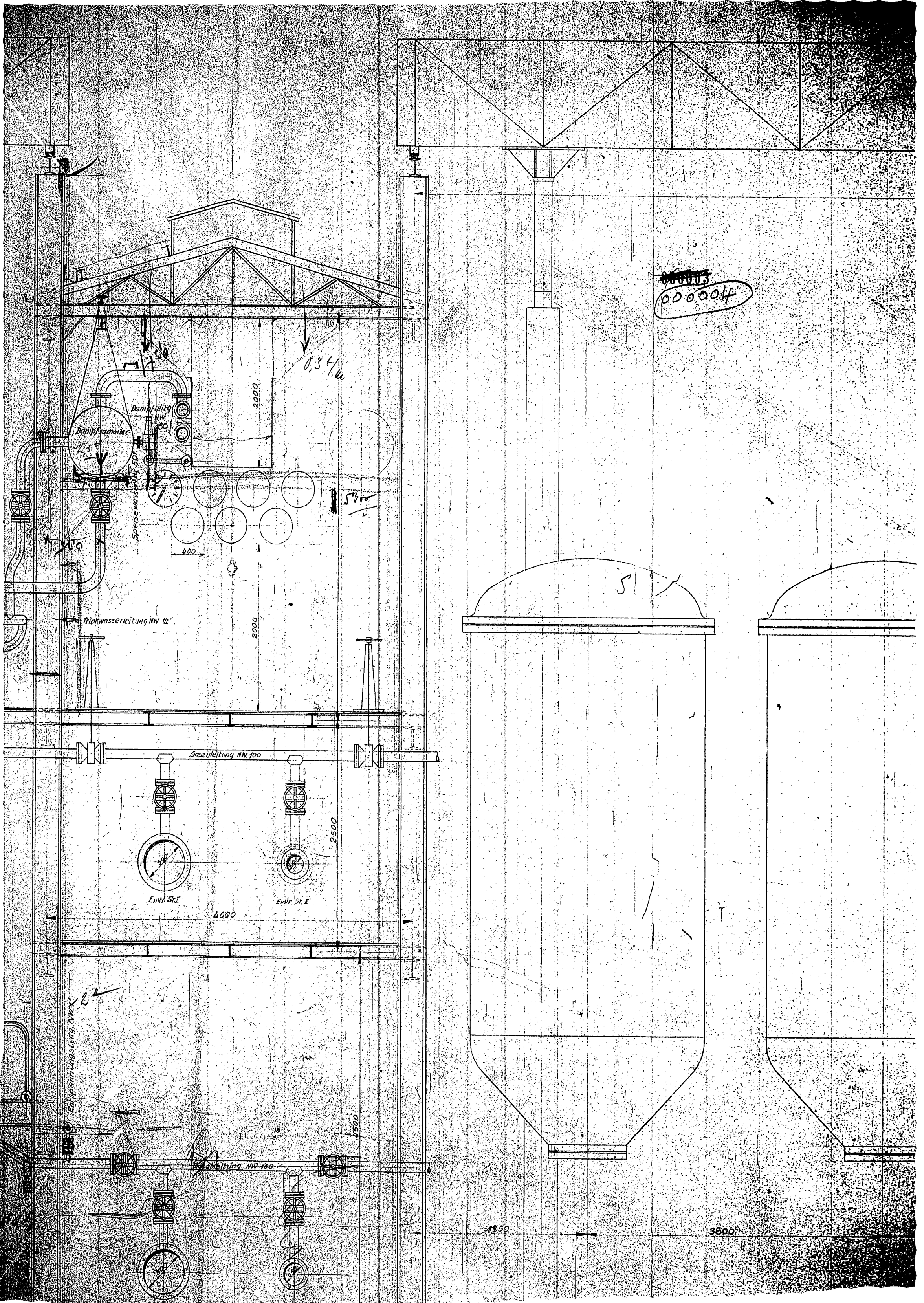
Benzindampf NW 1"

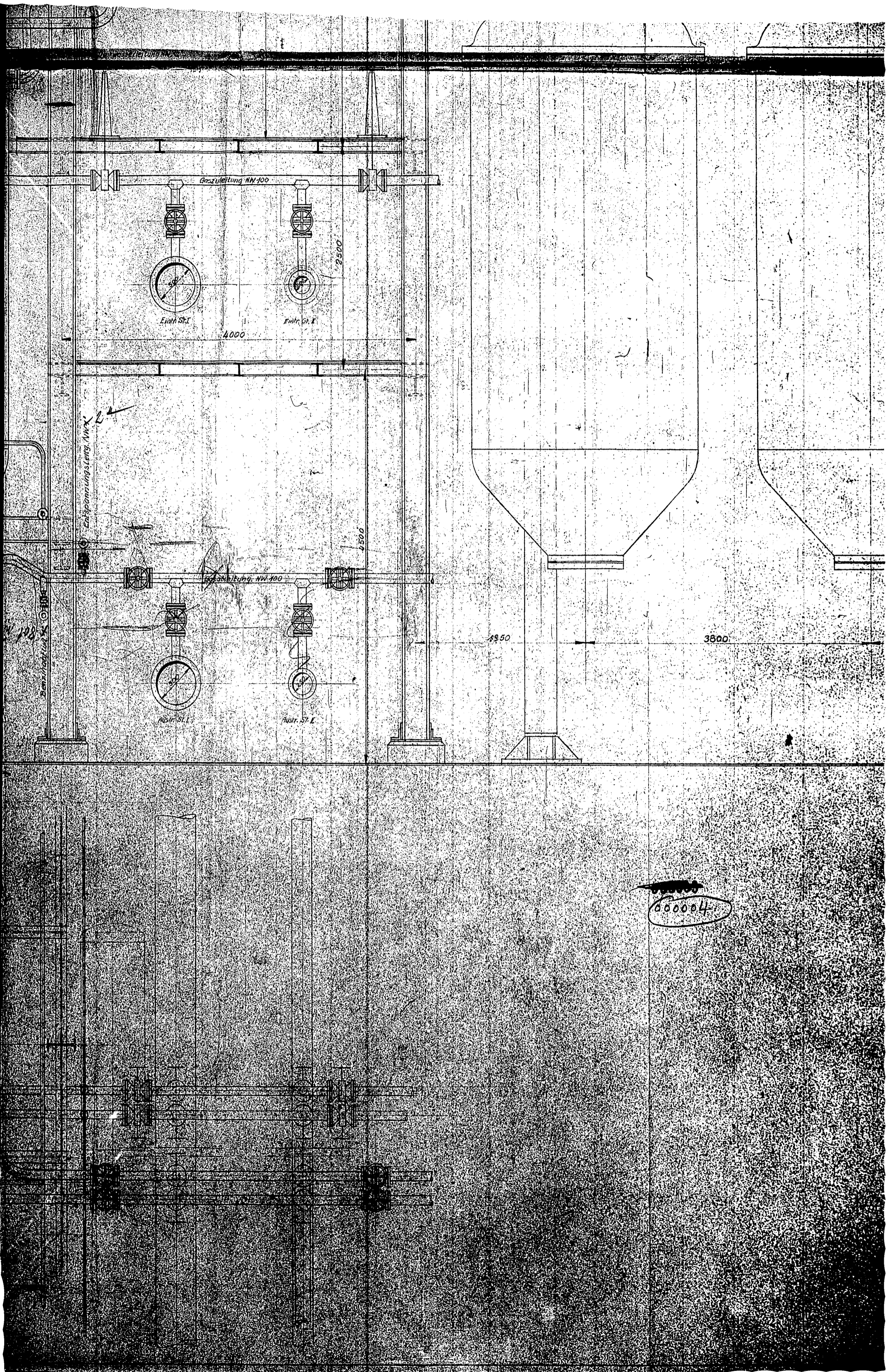
Prof. Dr. K. H. Müller
münchen

000004

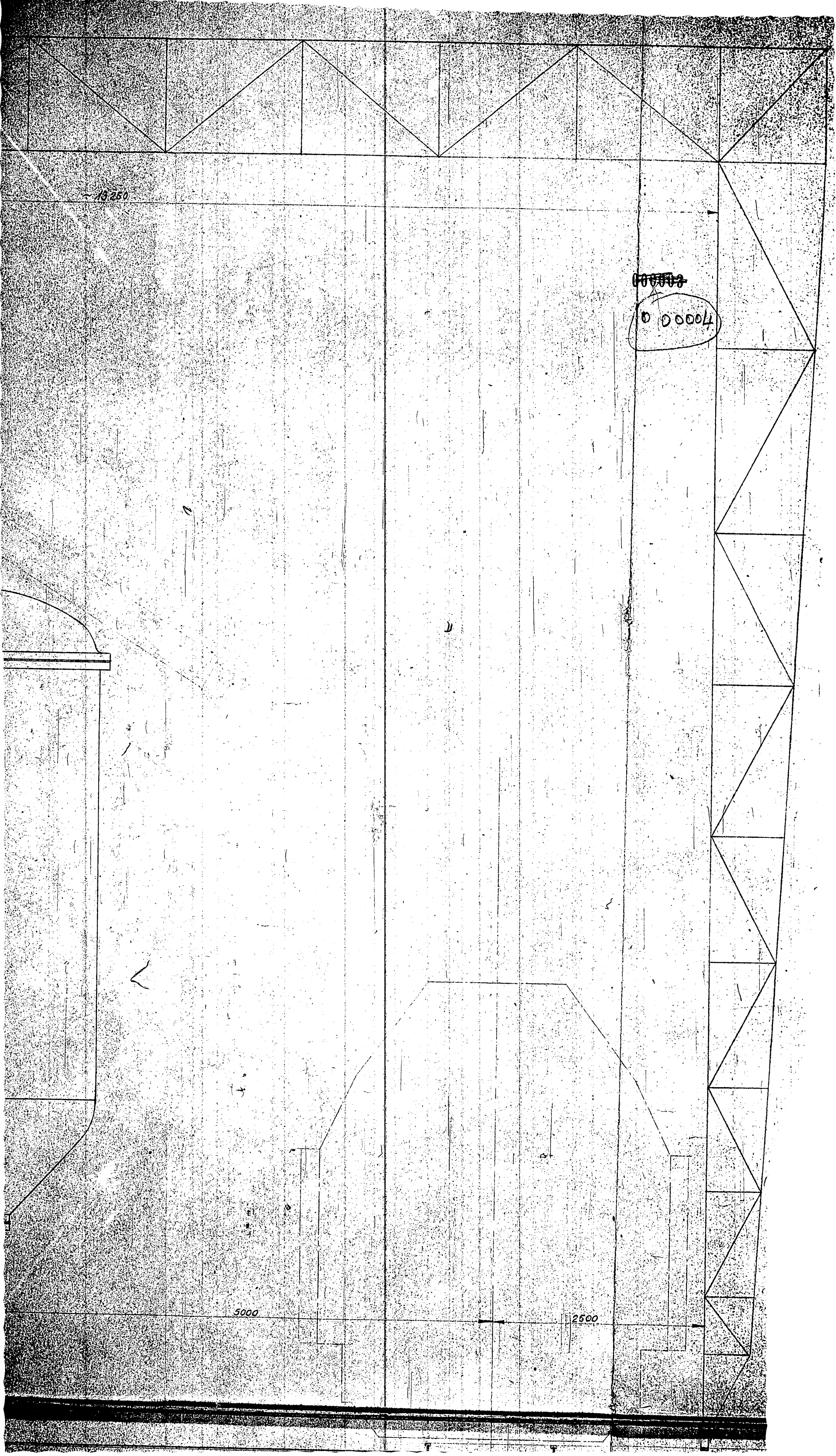
1320

2700





000004



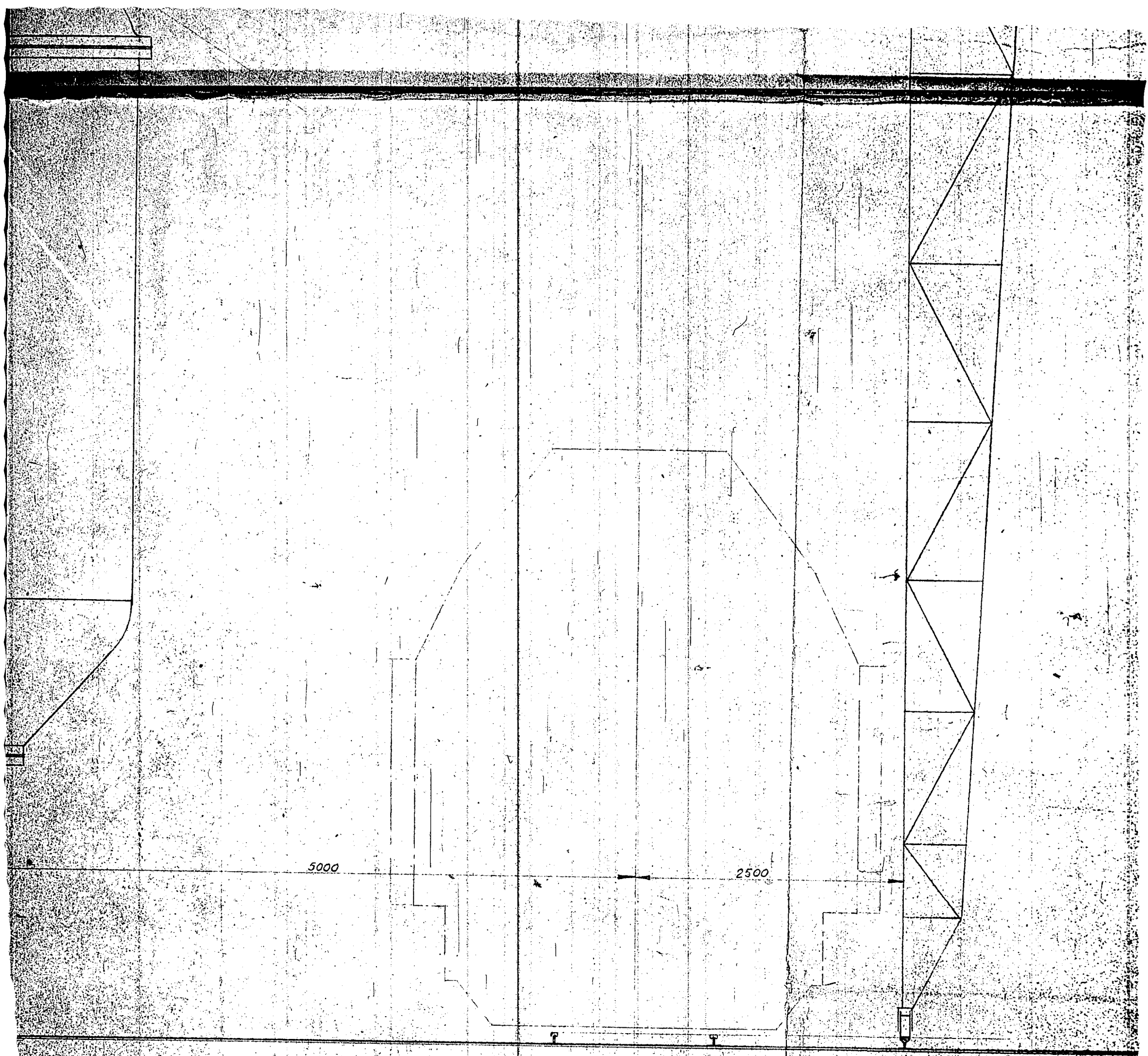
13250

70000

70000

5000

2500



~~00000~~
00004

ANFR. - 40152
ZEHNGS. NR.
C-5433

GHN