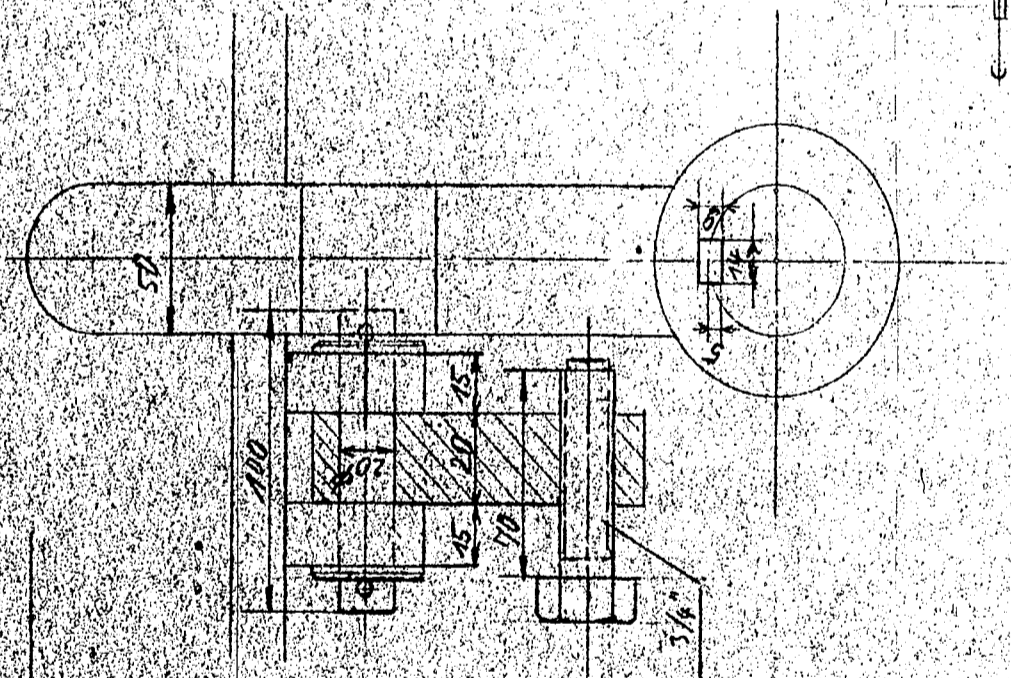
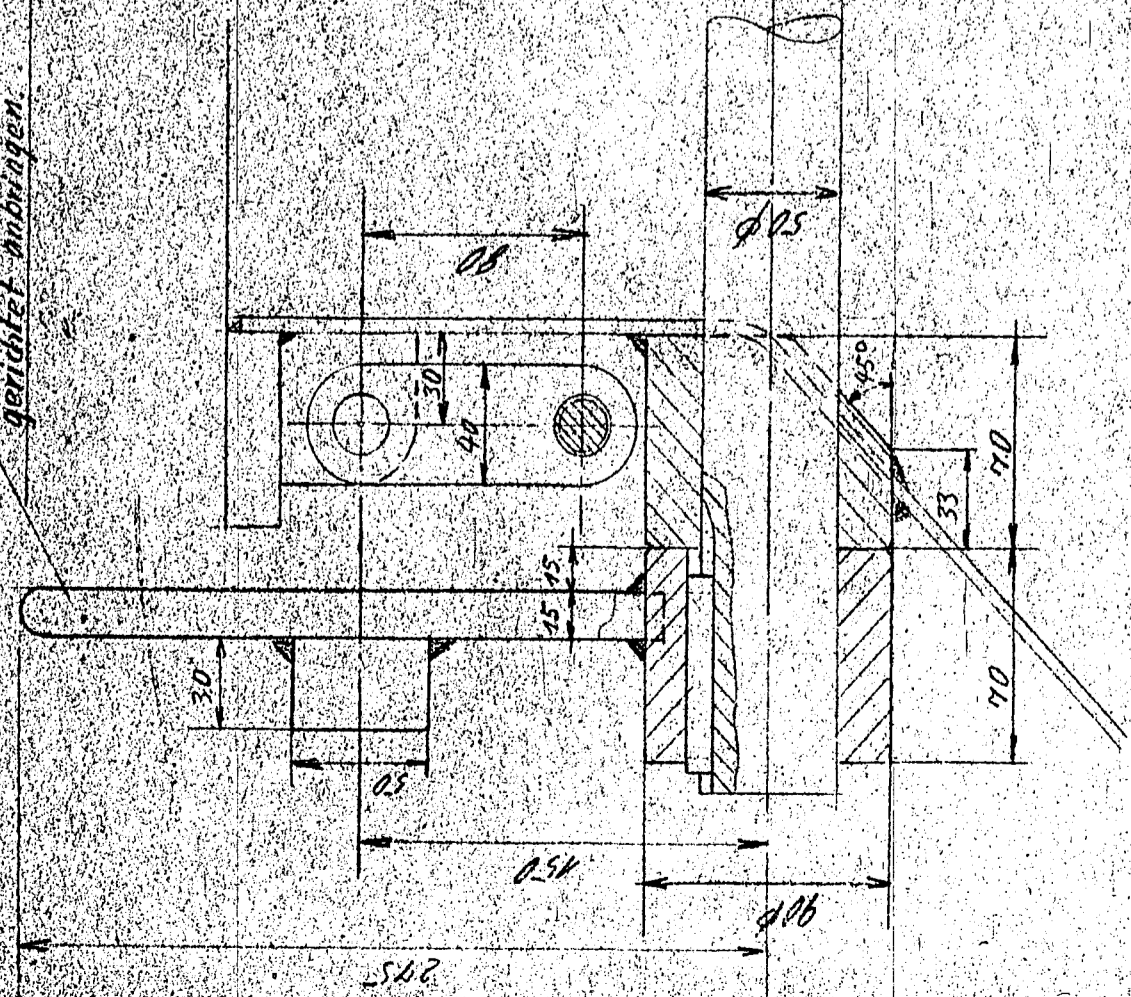
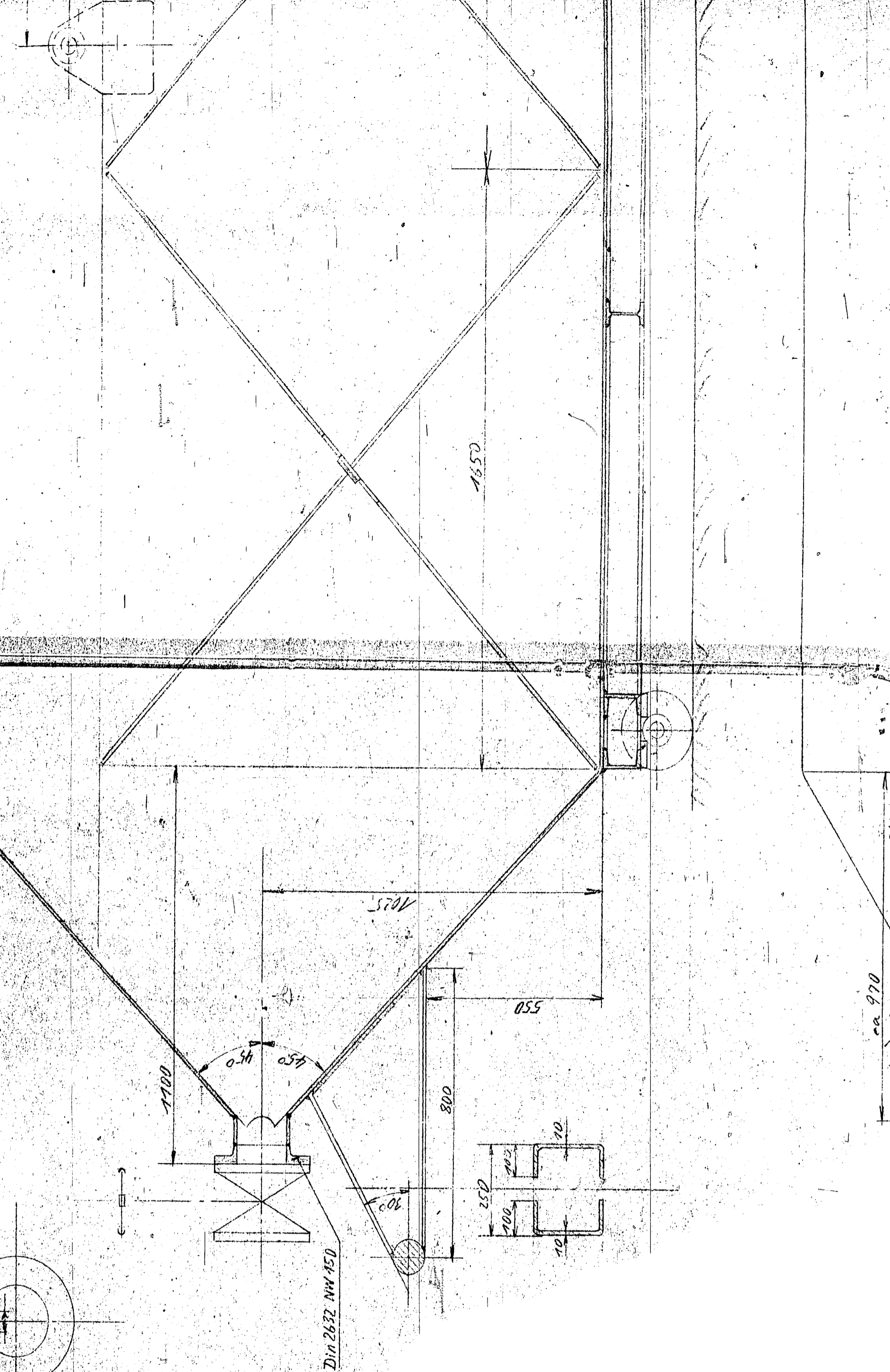
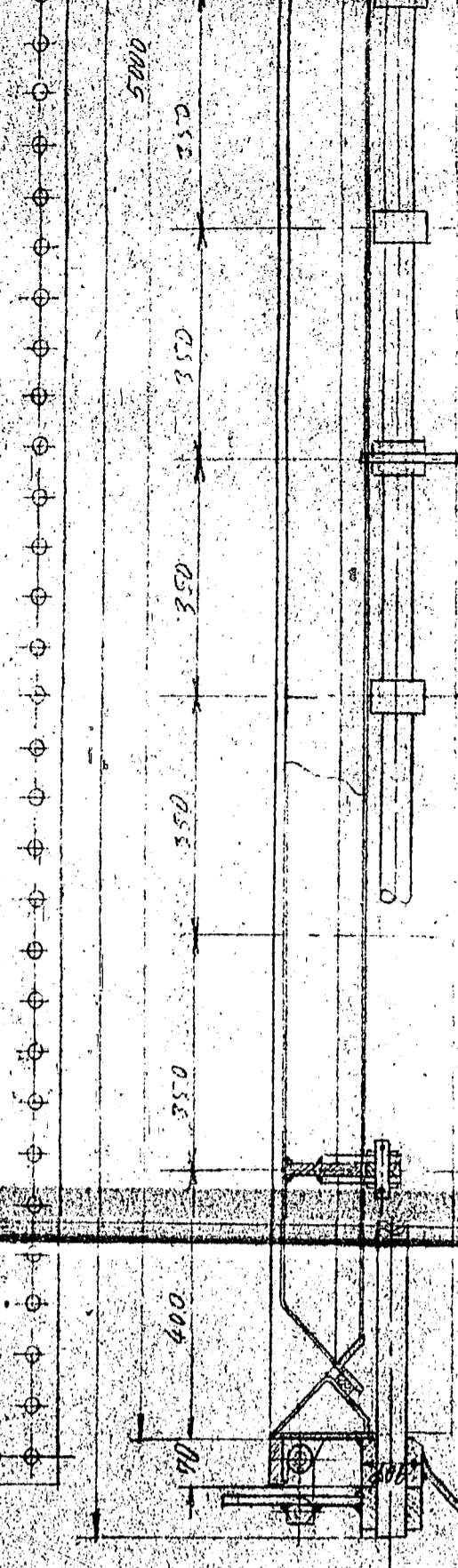


010077

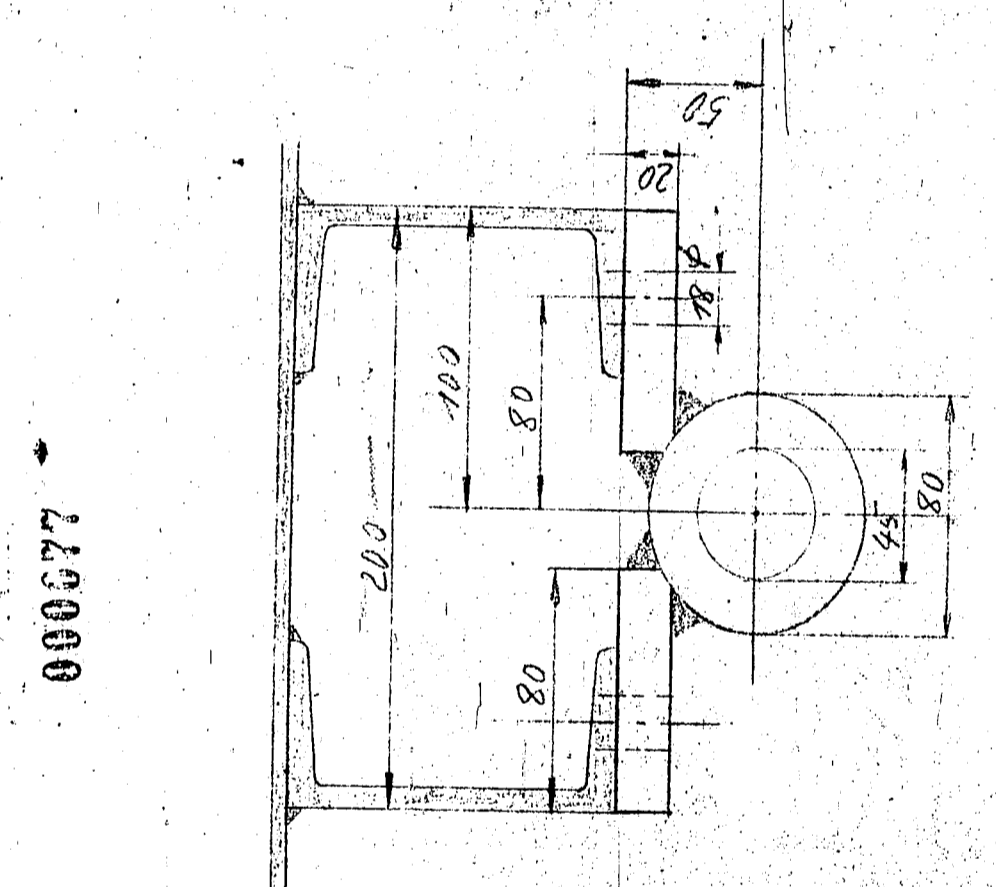
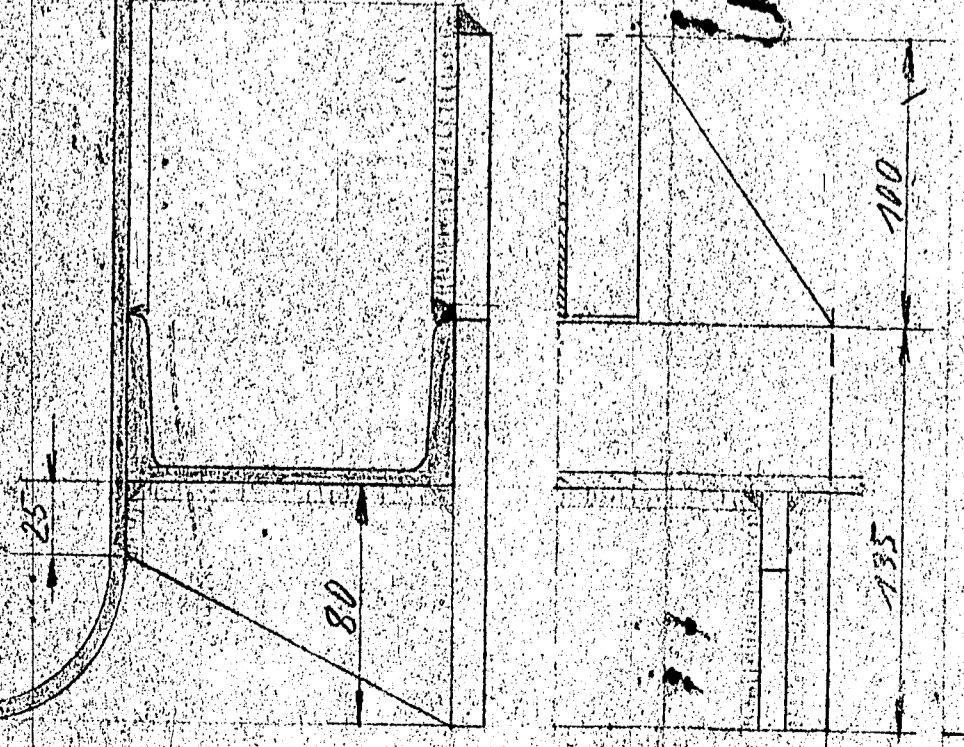
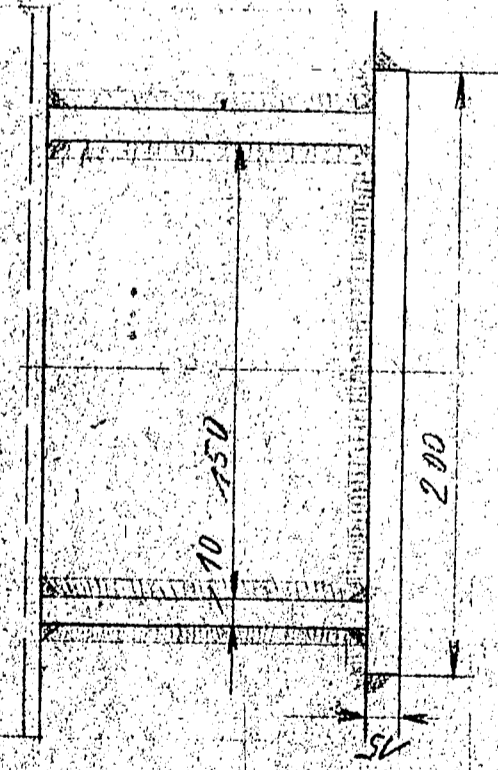
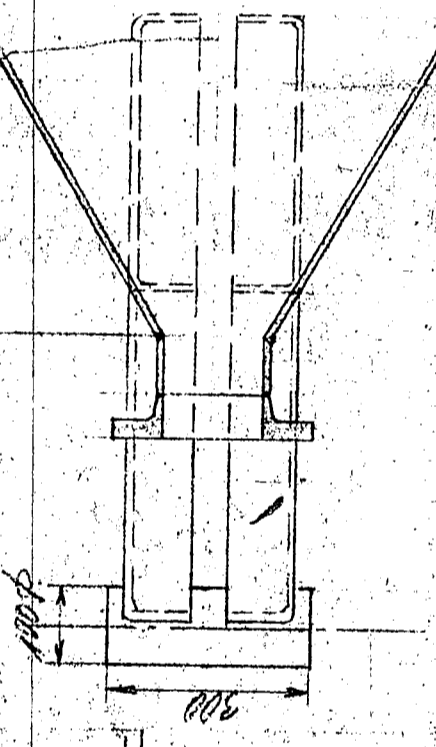
Hebel auf der anderen Seite d. Wagens mitteilen gerichtet anbringen.



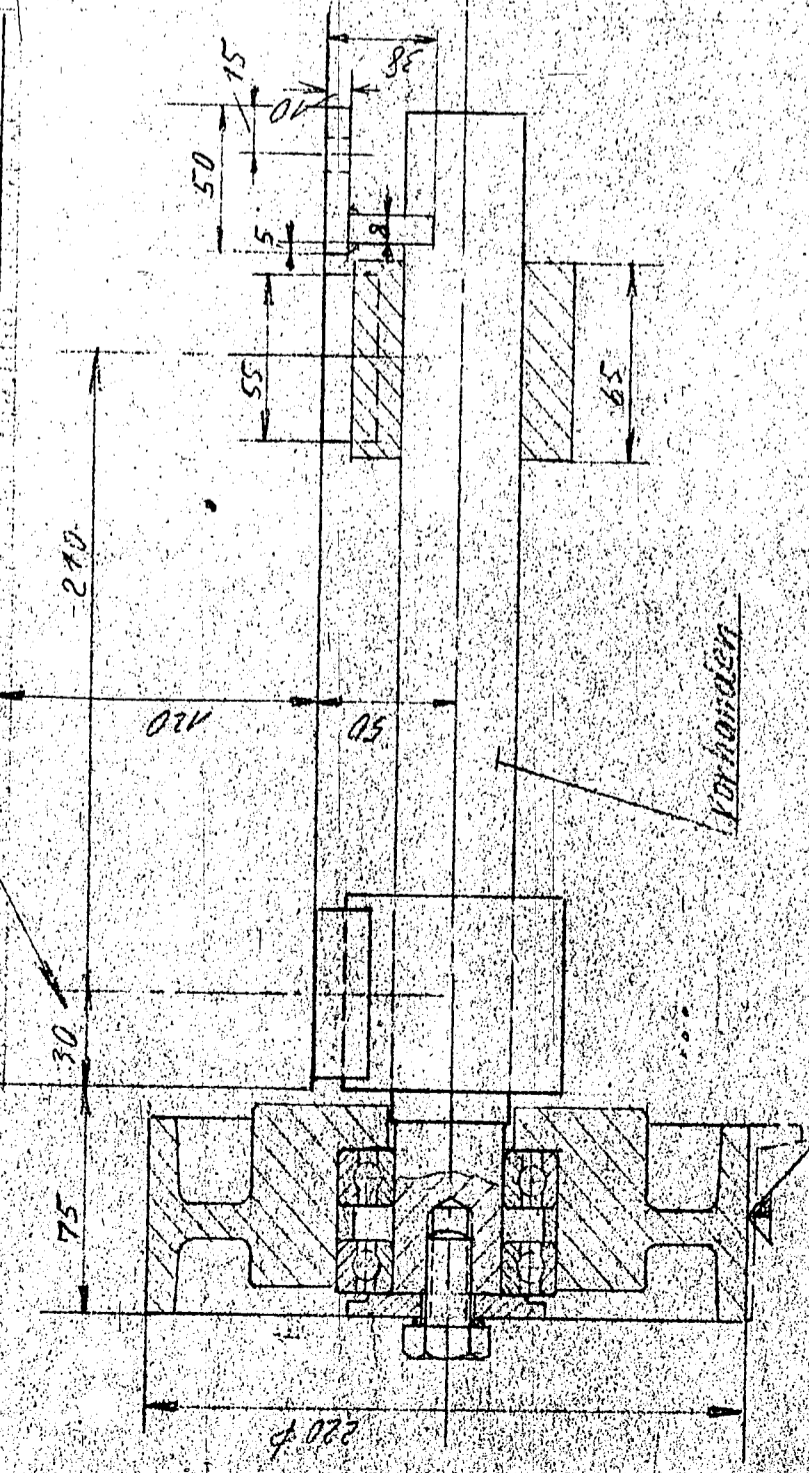
Schnitt A-B



ca. 970

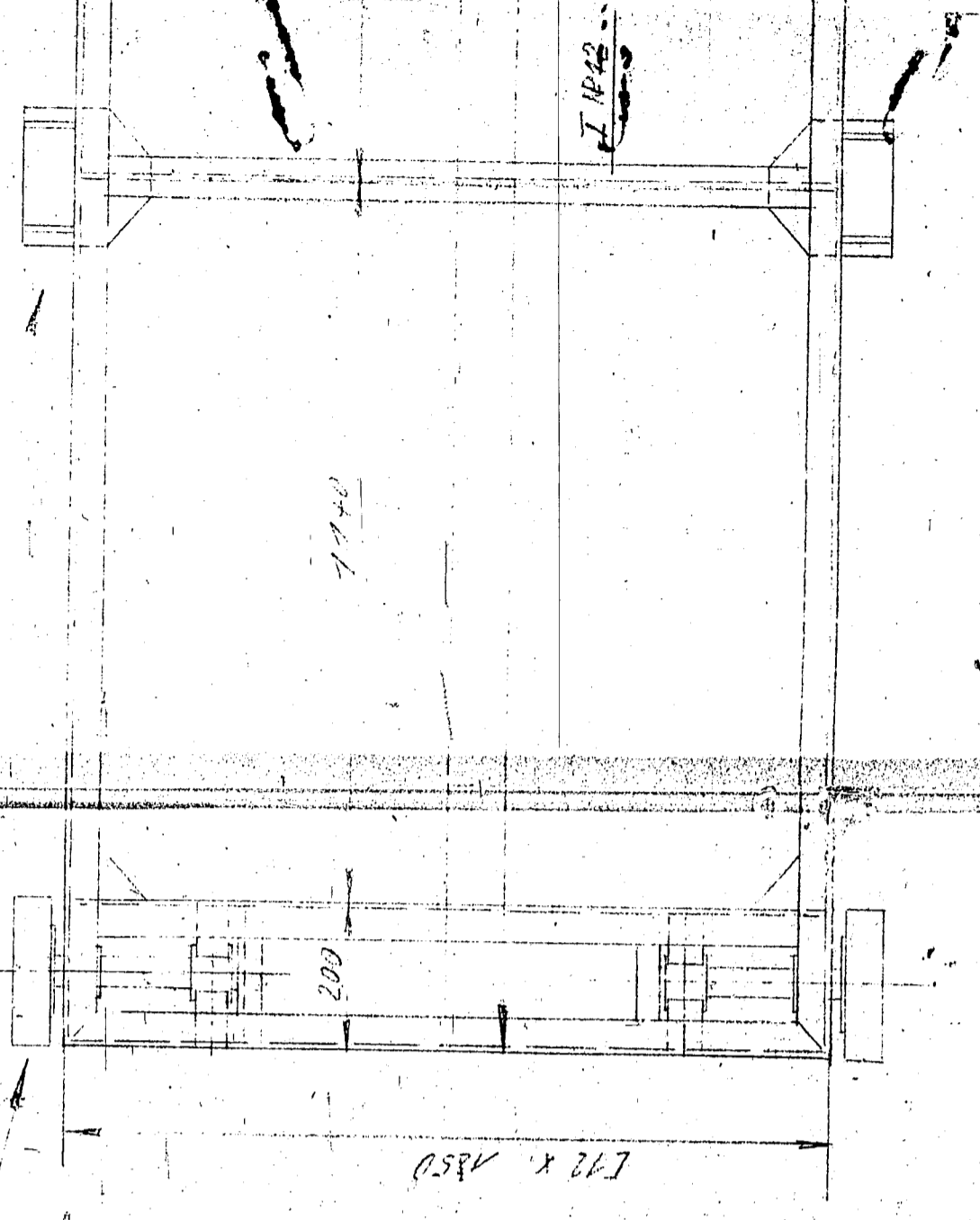
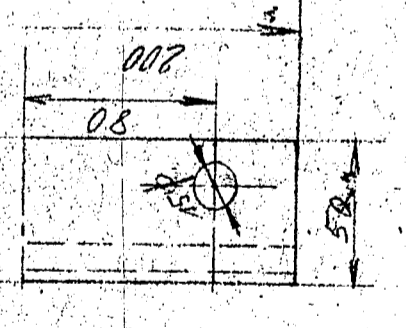


000677



Vorhanden

Schienenkranz der vorhandenen
Räder abbrechen auf 220 φ



12 x 42

1740

4900

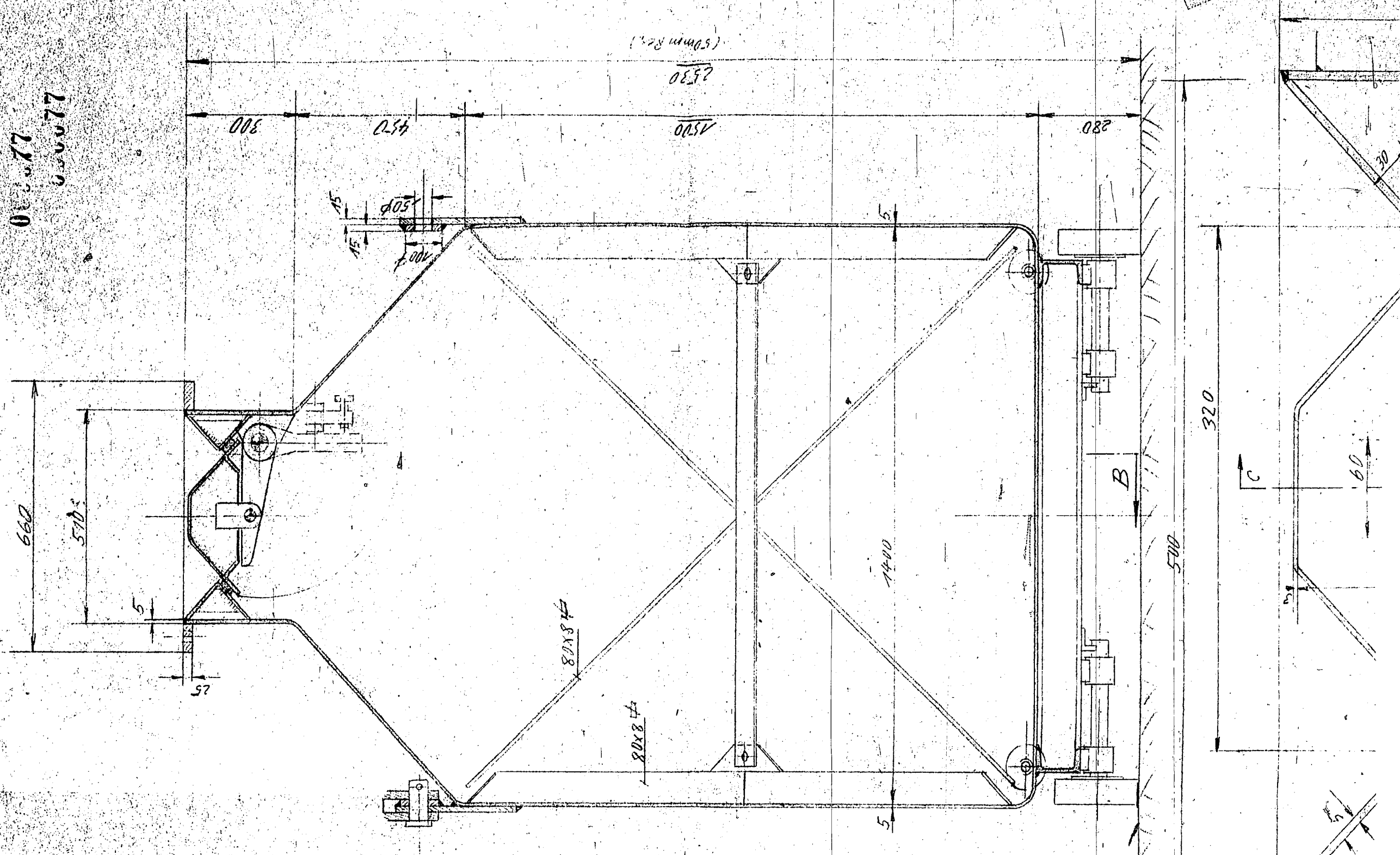
12 x 42

(12 x 12)

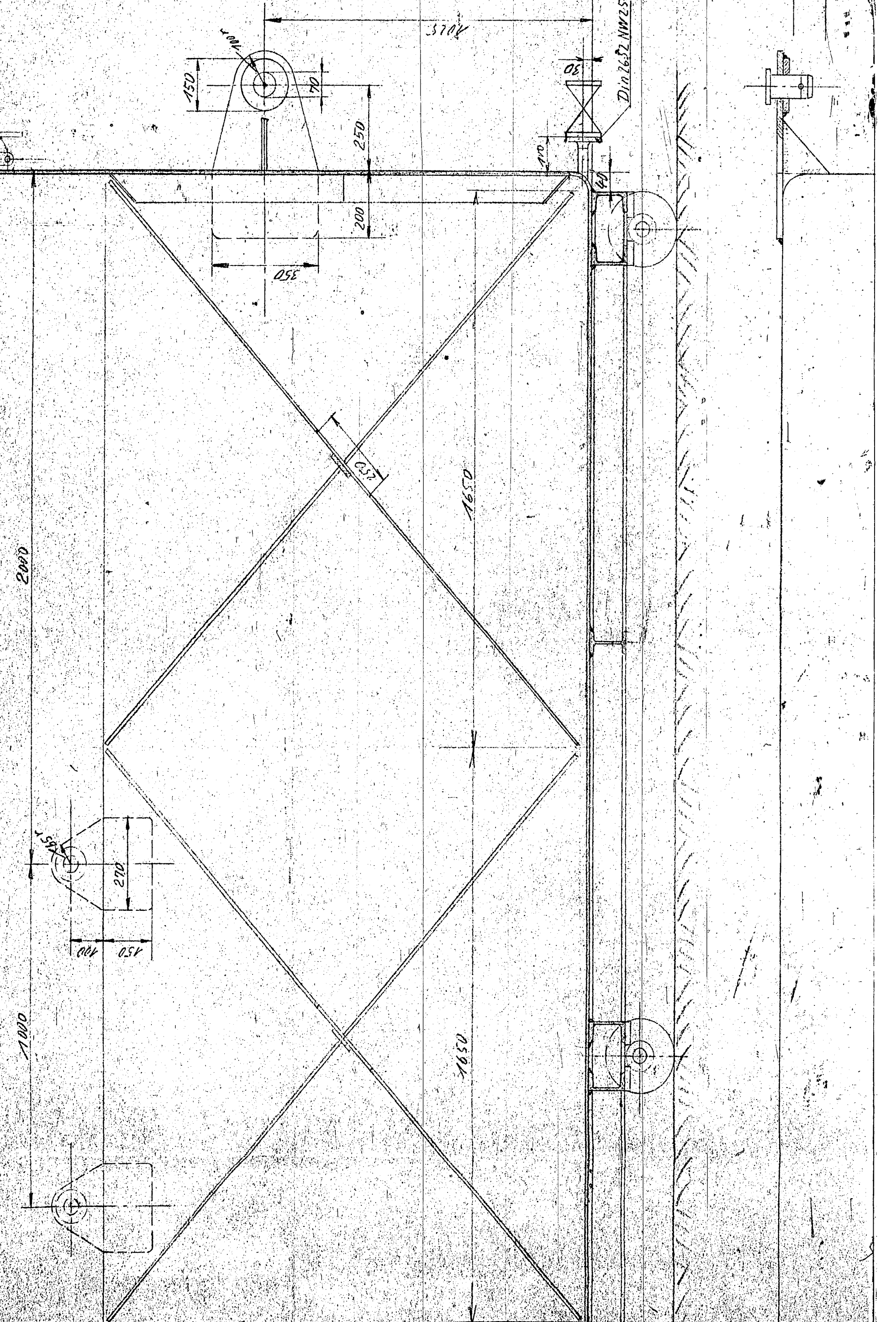
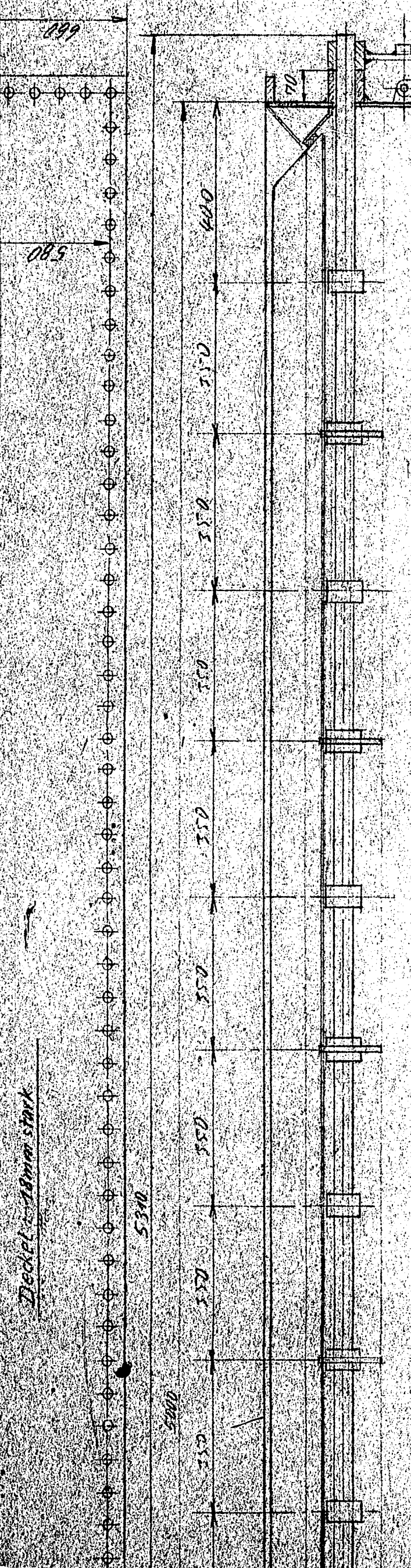
200

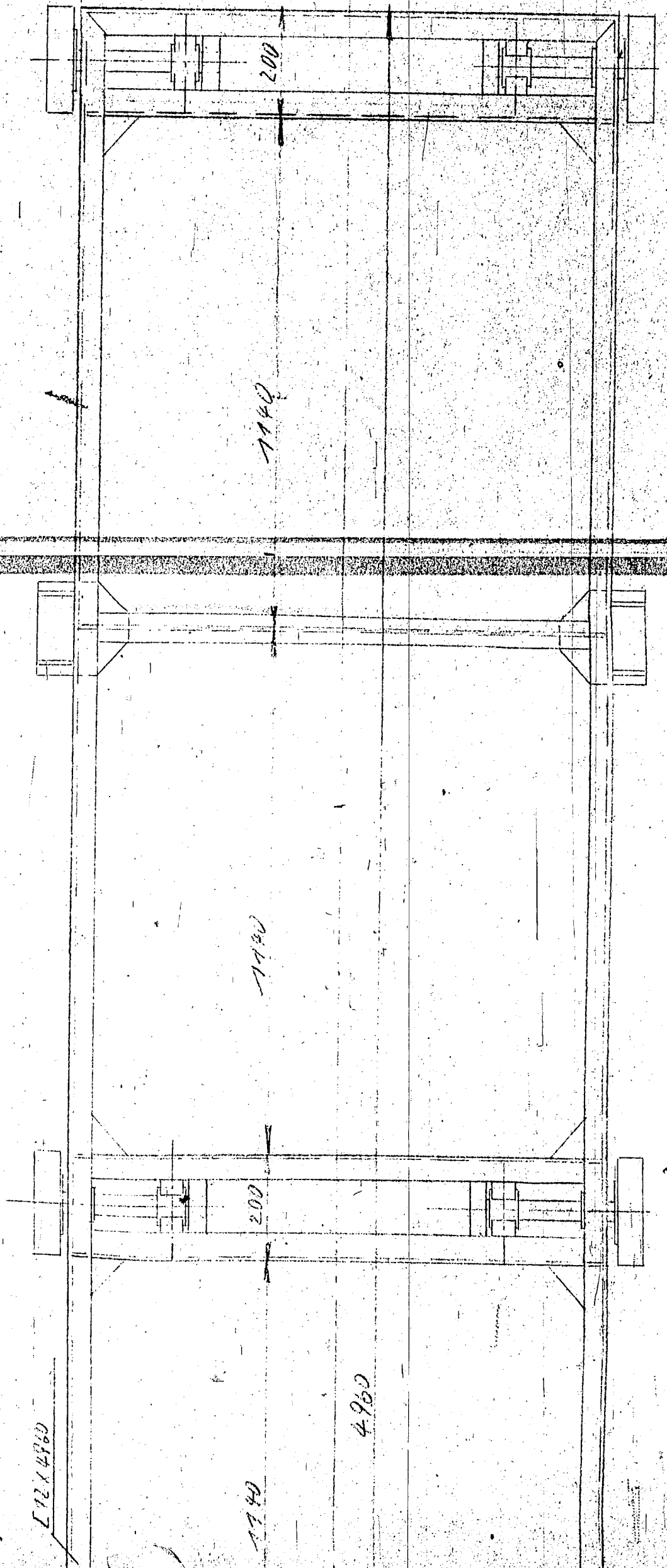
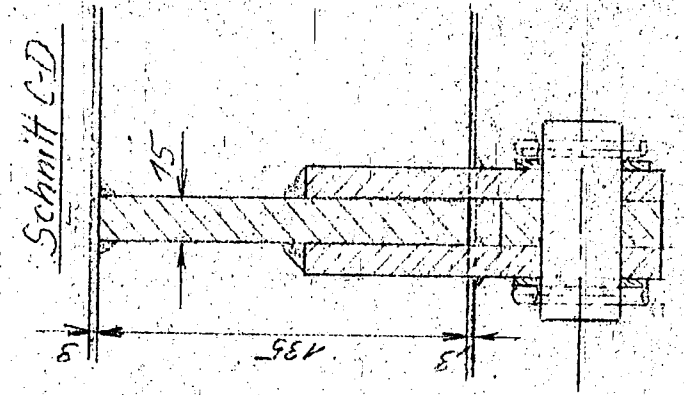
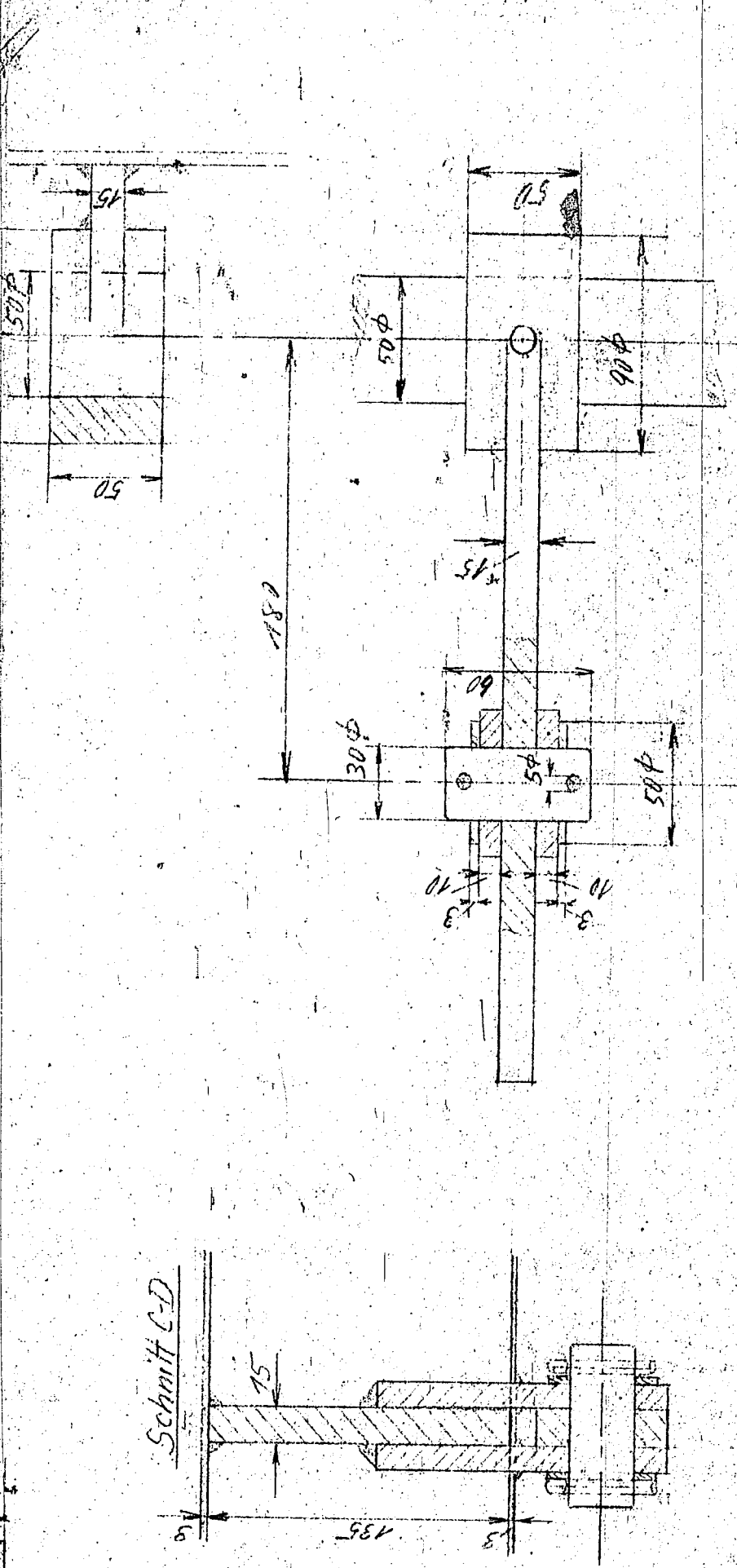
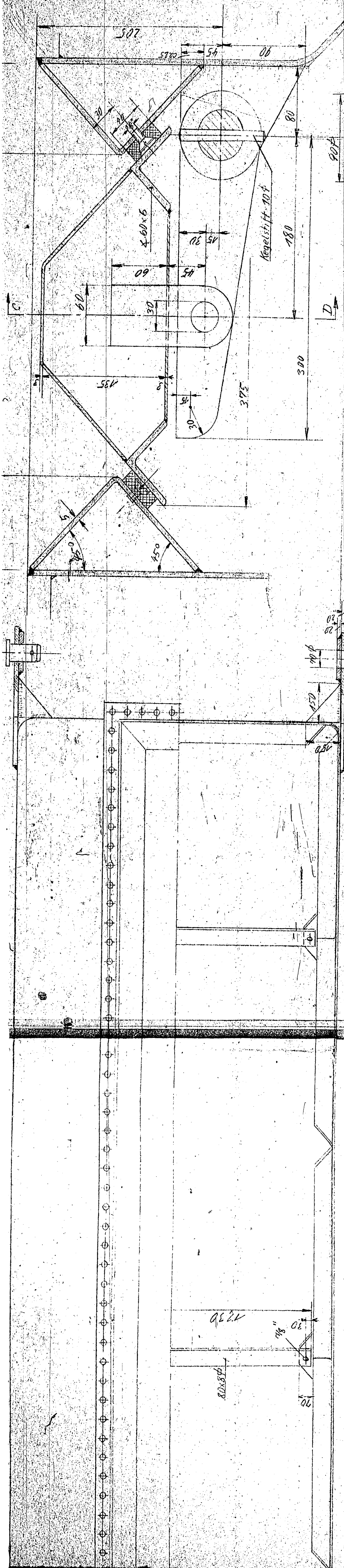
A

01.077
6.00077



Deckel 18mm stark





000077

3439-30/5.01-97

Anderungen:		Benennung		Teil Zeich. Nr. Werkstoff		- brätzen - großschraffen schruppen - feinschlichten	
Datum	Name	Anschlußzeichnung					
25.4.39	Schmitt						
Gezeichnet							
Geprüft							
Skizziert							
MASSSTAB							
1:10							
1:25							

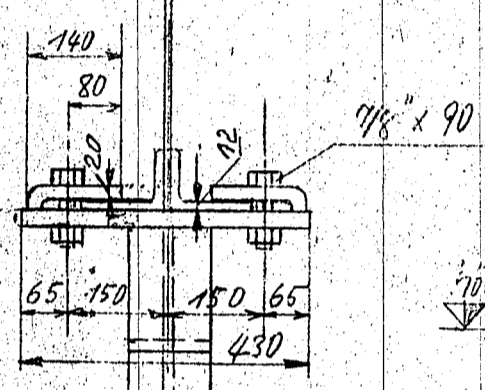
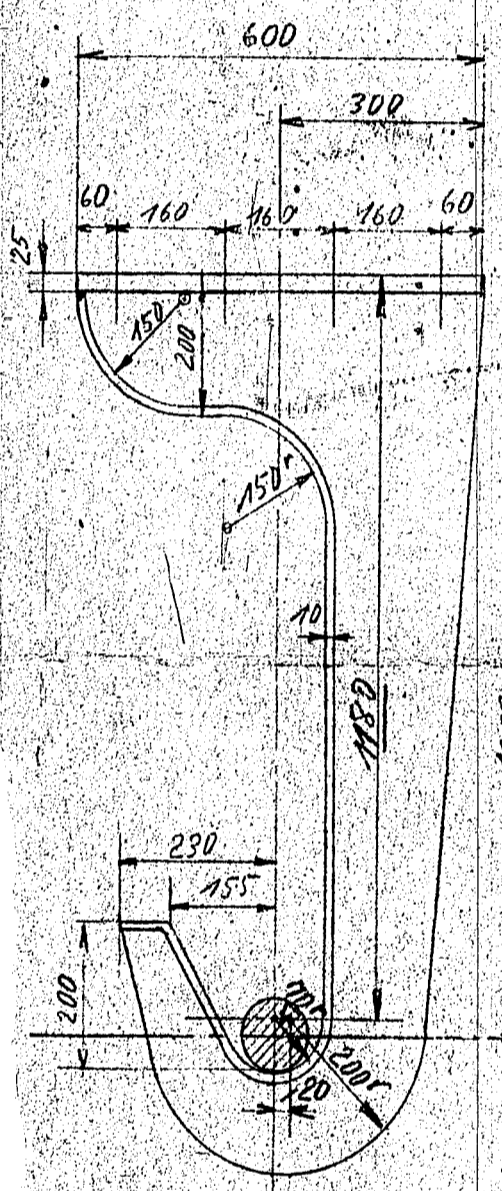
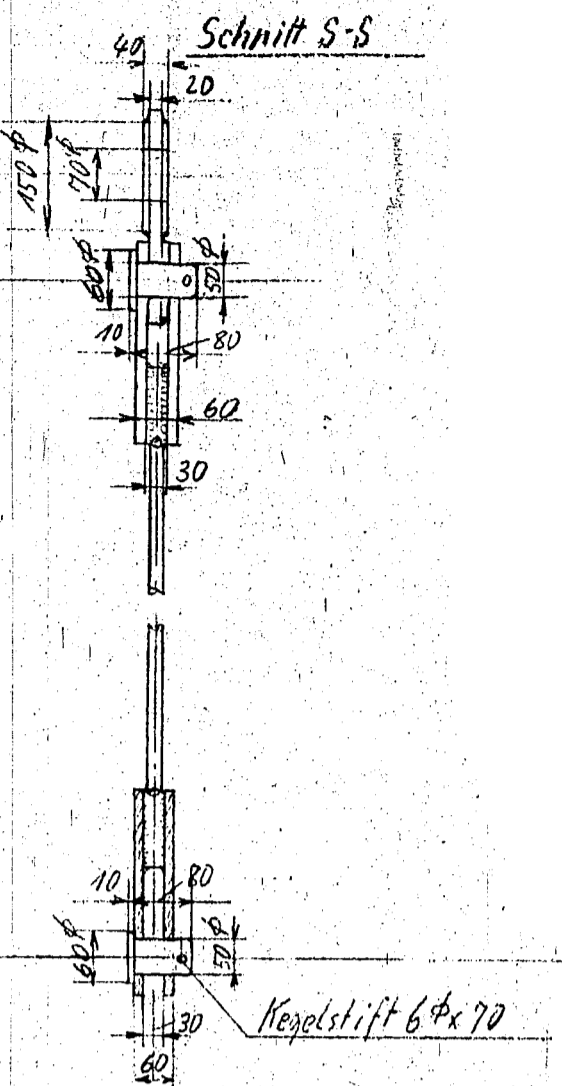
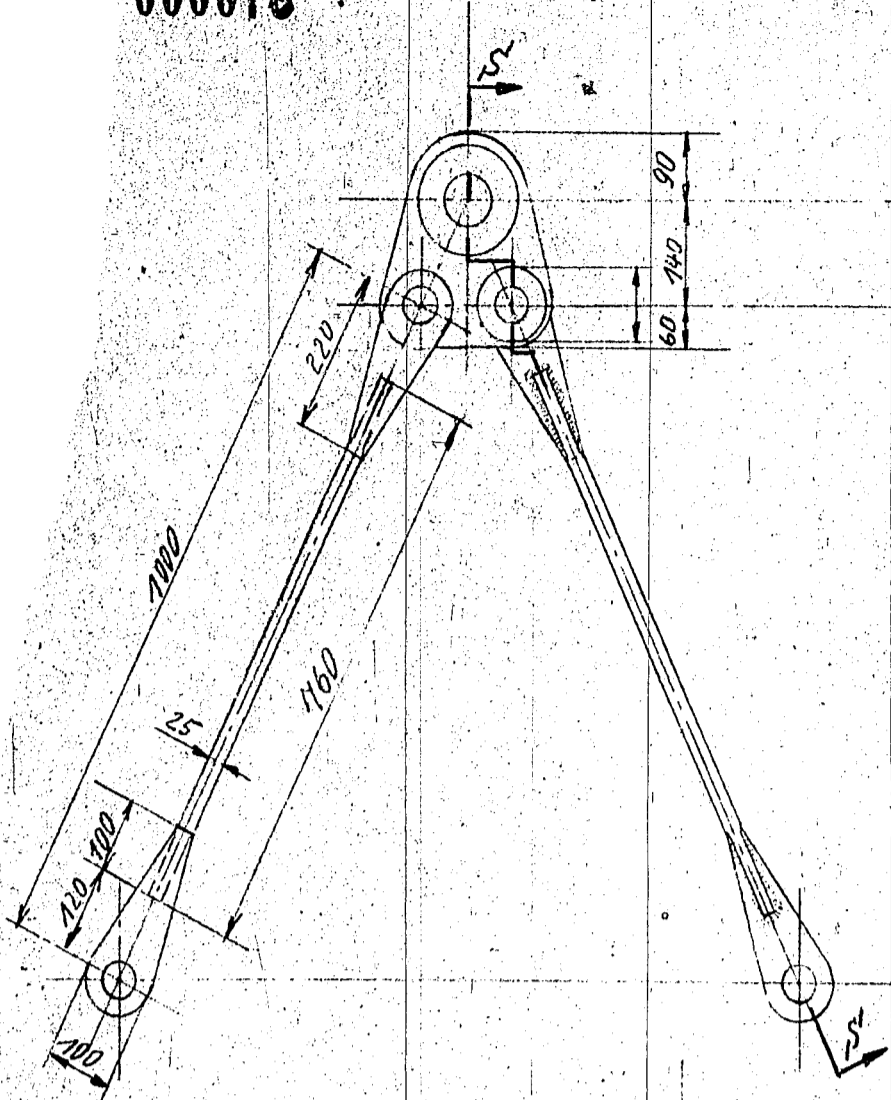
Ruhrchemie A.-G.
 Oberhausen-Folten.

Nr. 2 Ka 14 192
 Ersetzt für:
 Ersetzt durch:

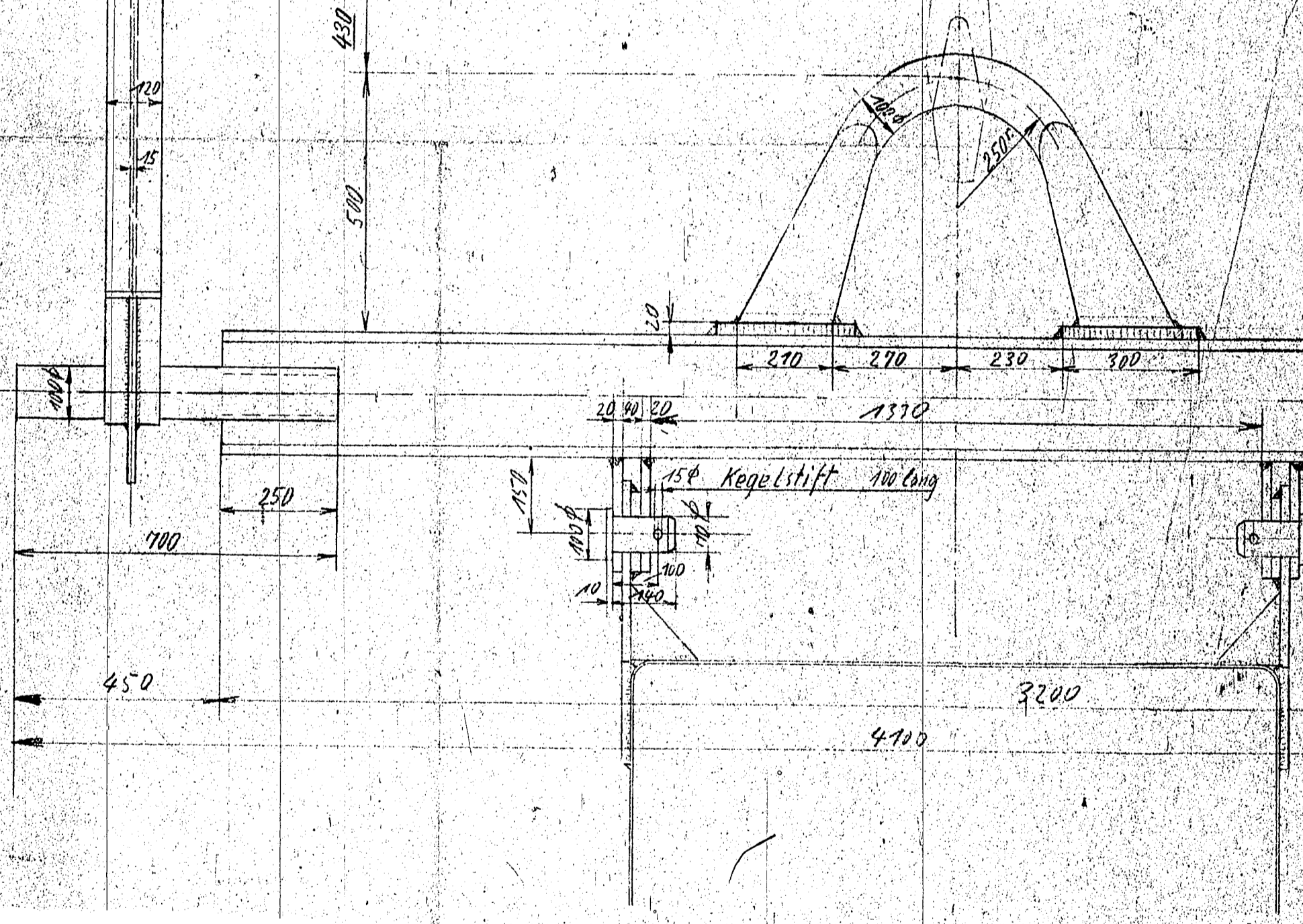
Kontaktmassenwagen

000078

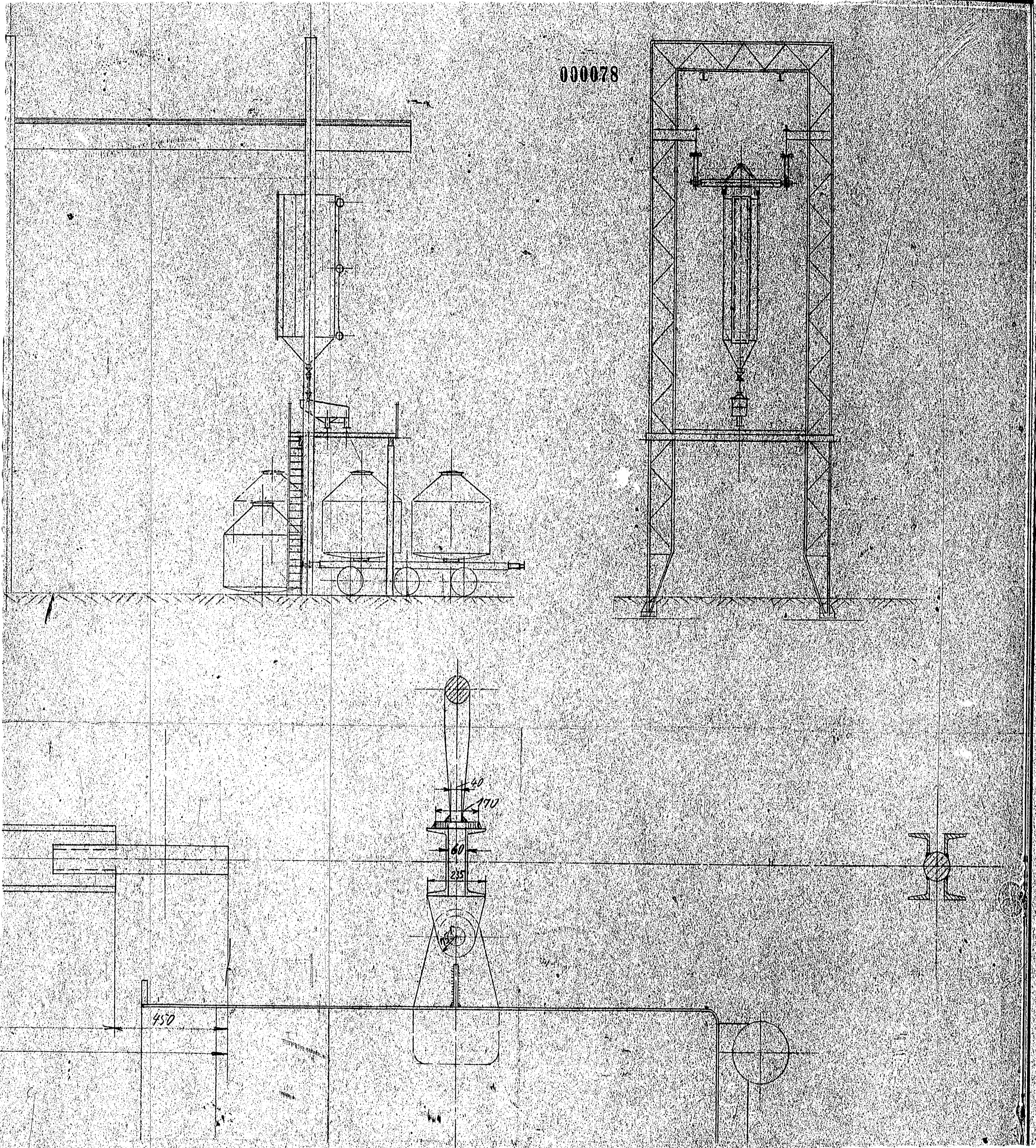
000078



nächste Hakenstellung 1300 unter S.O.



000078



Stück	Benennung	Teil	Zdng. Nr.	Werkstoff
Änderungen:				
				↔ Krätzen
				↔ gröblichere Schuppen
				↔ feinschliffen
Entworfen	Datum	Name	Anschlußzeichnung	RH Ruhrchemie A.-G. Oberhausen-Holten. RH
Gepaus	15.8.19	Silber		
Geprüft				
Maßstab	Disposition der Kontaktsichtanlage			Nr. 2 Ka. 2.447
1:10	und Halengeschick			Erstellt für:
				Erstellt durch: