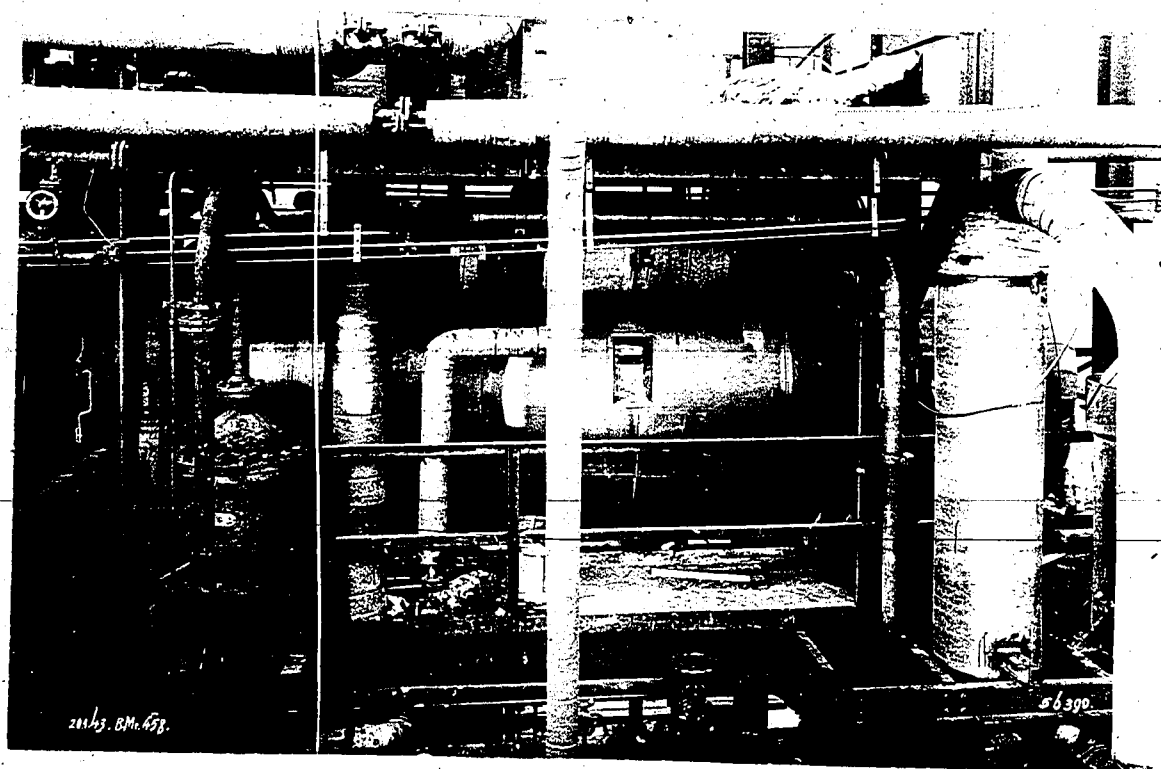
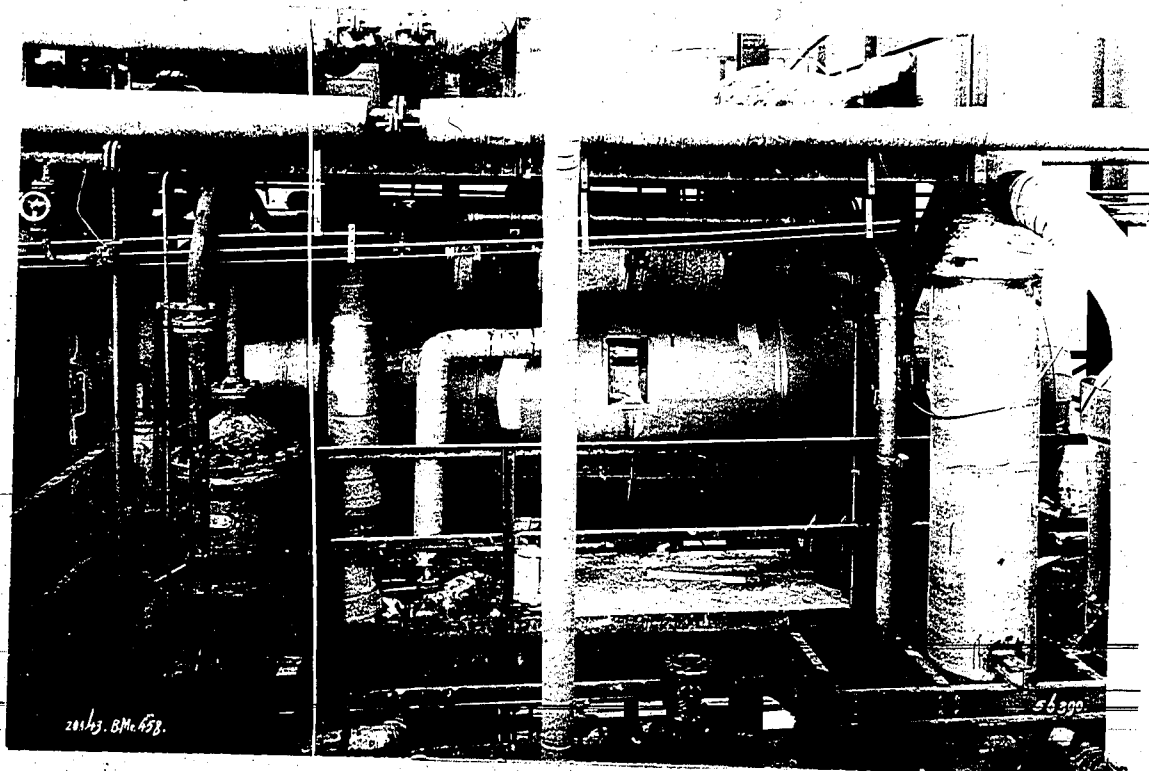


Bild No. 56.390. - 2,5 cbm Plattenofen vom Dach aus

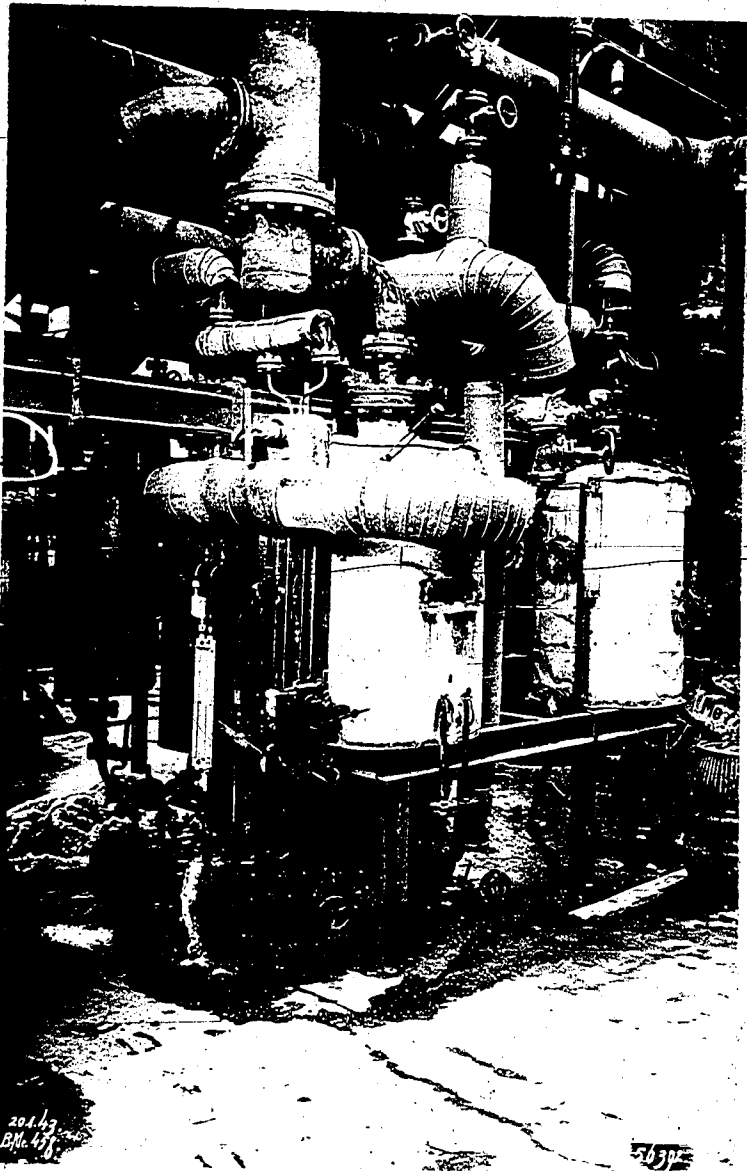
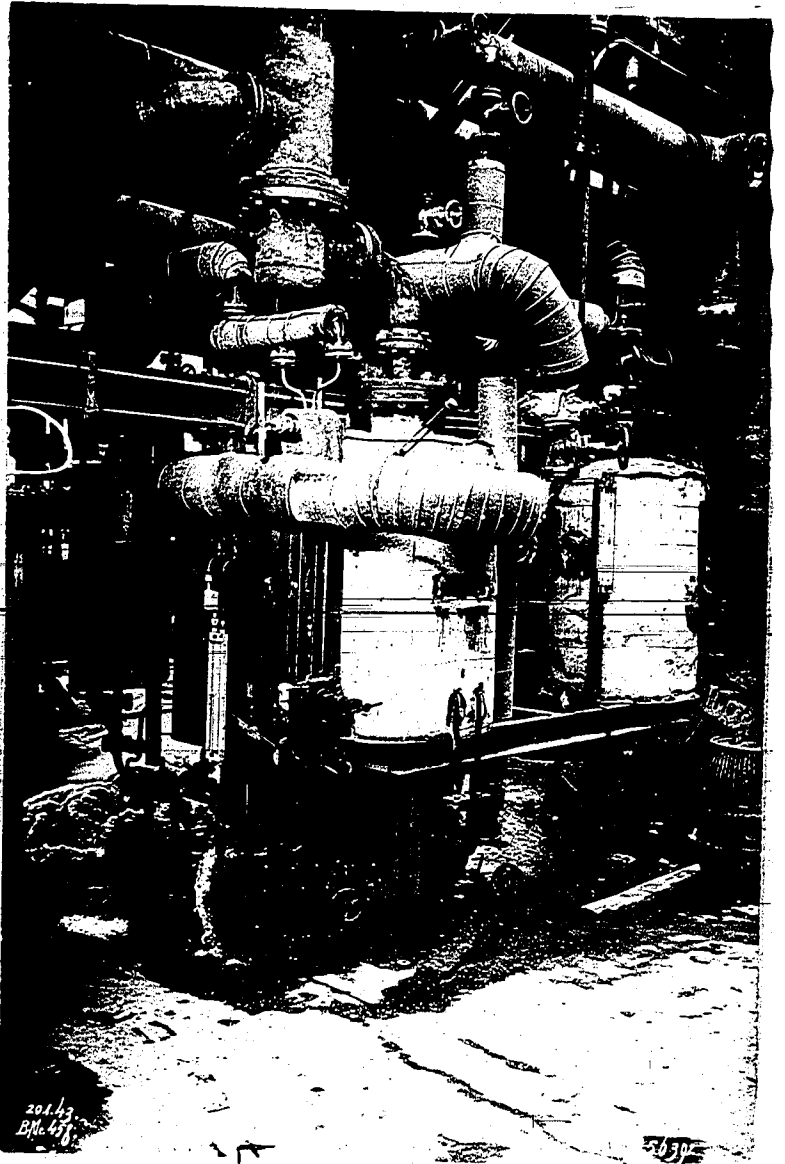
00000432



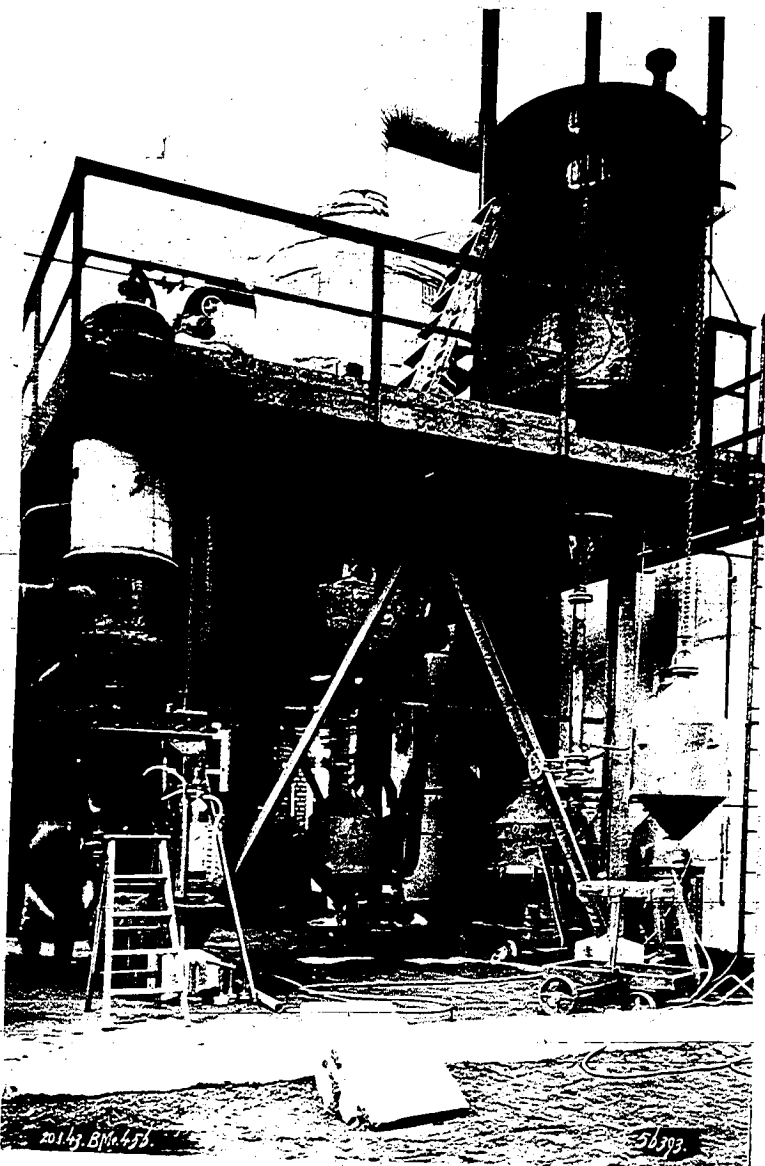
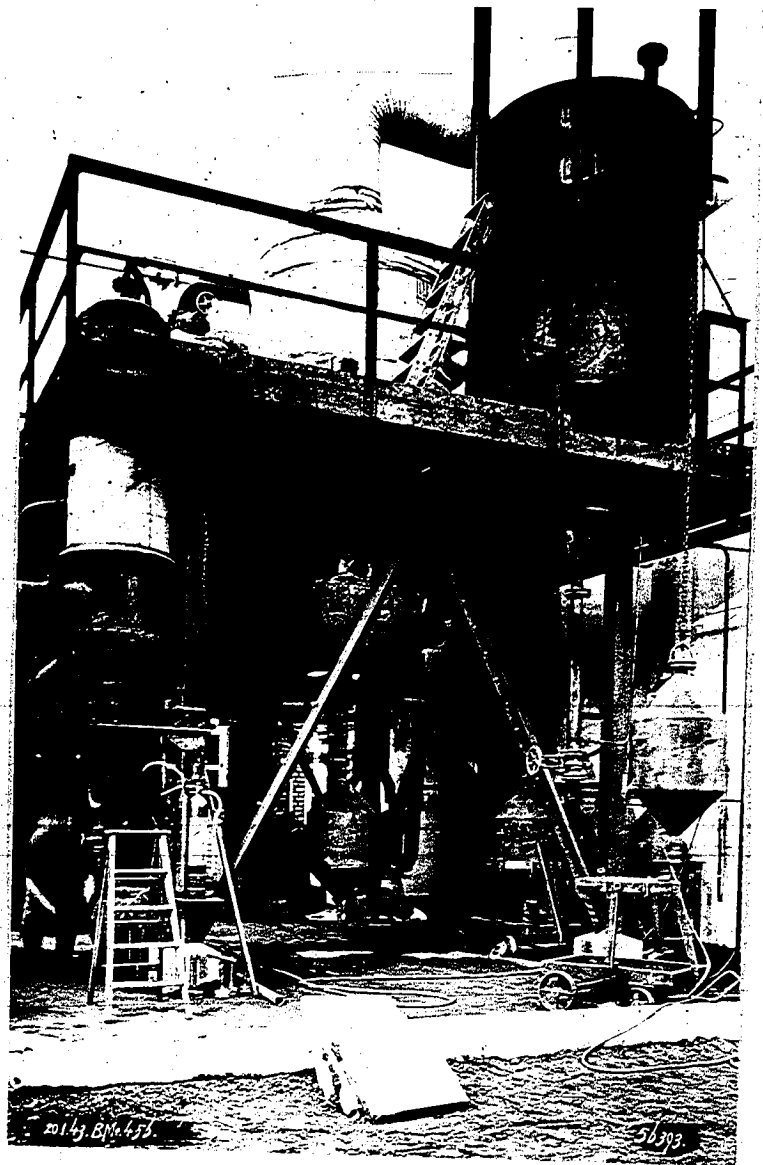
Bag Target  
2043 -30/4.04

Bild No. 56.392 = Abscheider am Ofen 3.

00000100



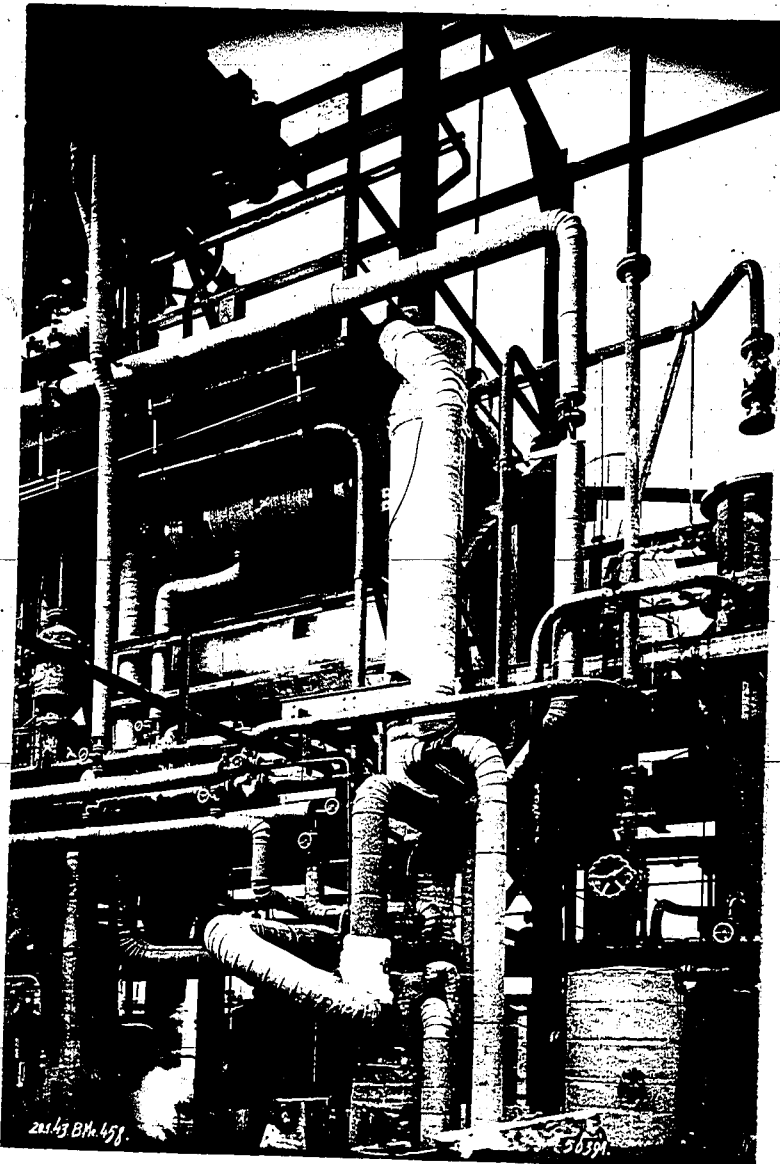
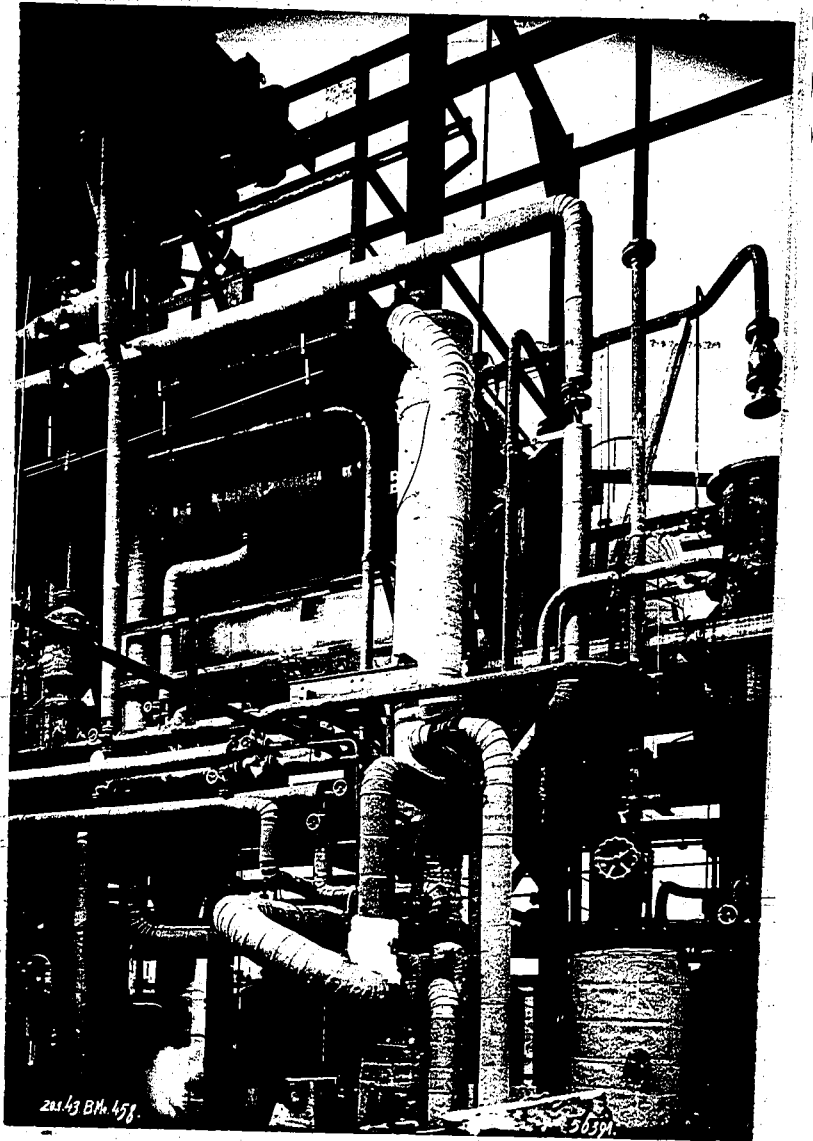
Bag Target  
043 -30/4.02



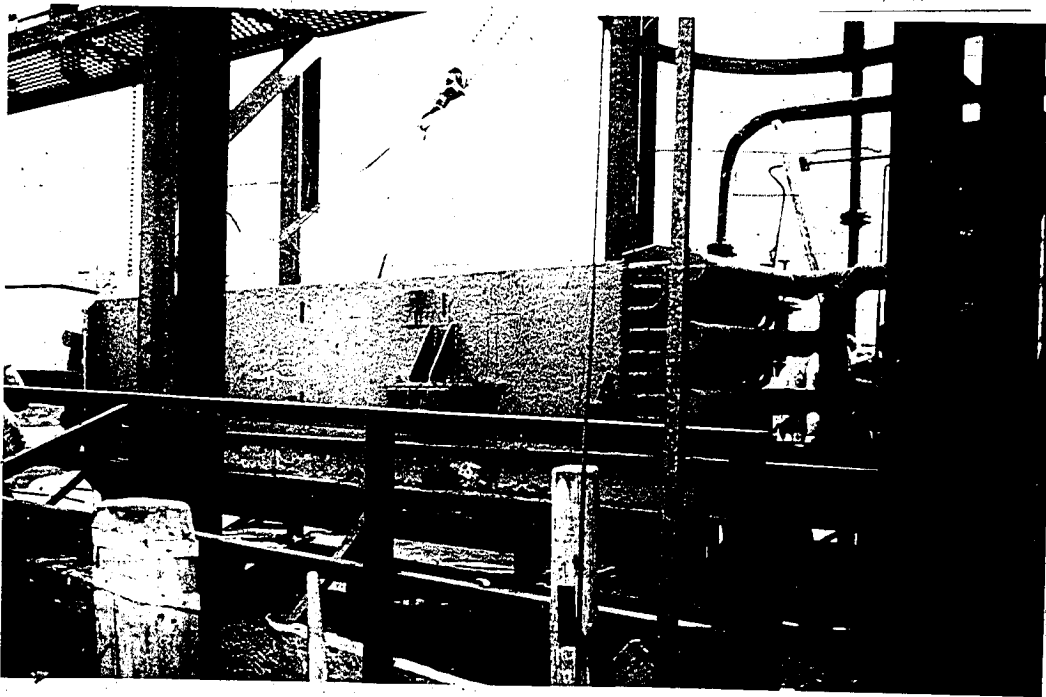
Bag Target  
3043, -30/4.02

Bild-No. 56.391 = 2,5 cbm Plattenofen vom Südosten aus

0000435

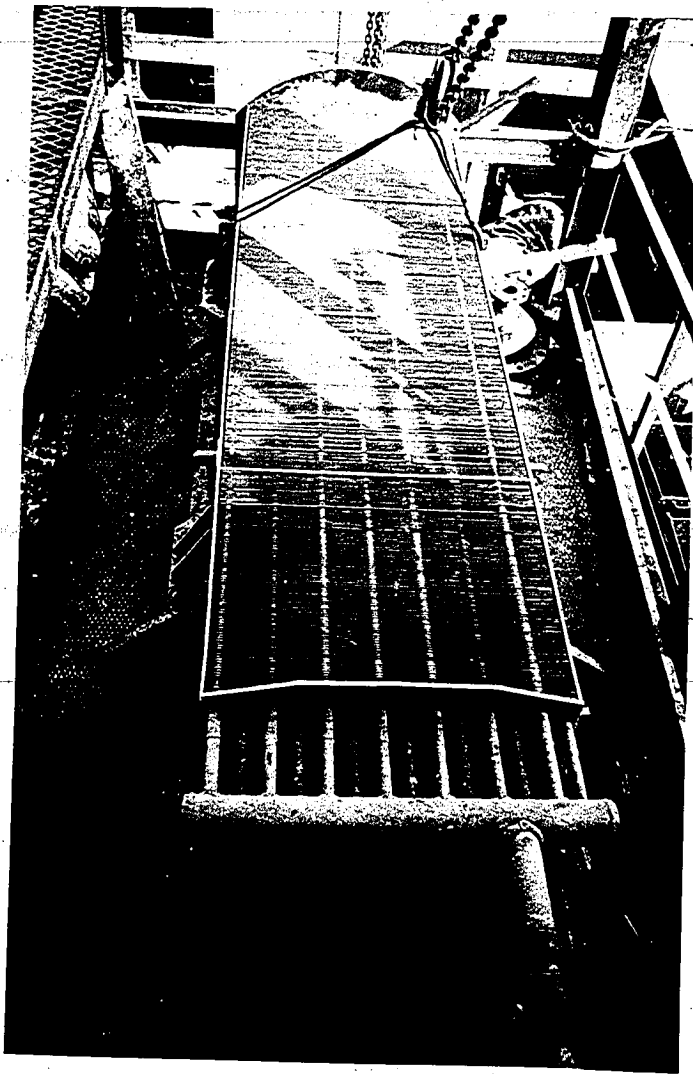


Bag Target  
043 -30/4.02



00000436

2,5 m<sup>2</sup> Plattenofen in Bau Me 458 (Bild No. 56590/15)  
Februar 1943.



Bag Target  
3048 -30/4.02

2,5 m<sup>2</sup> Plattenofen in Bau Me 458  
(Bild No. 56590/16, Februar 1943)

*Syssel plant  
Lorenz*