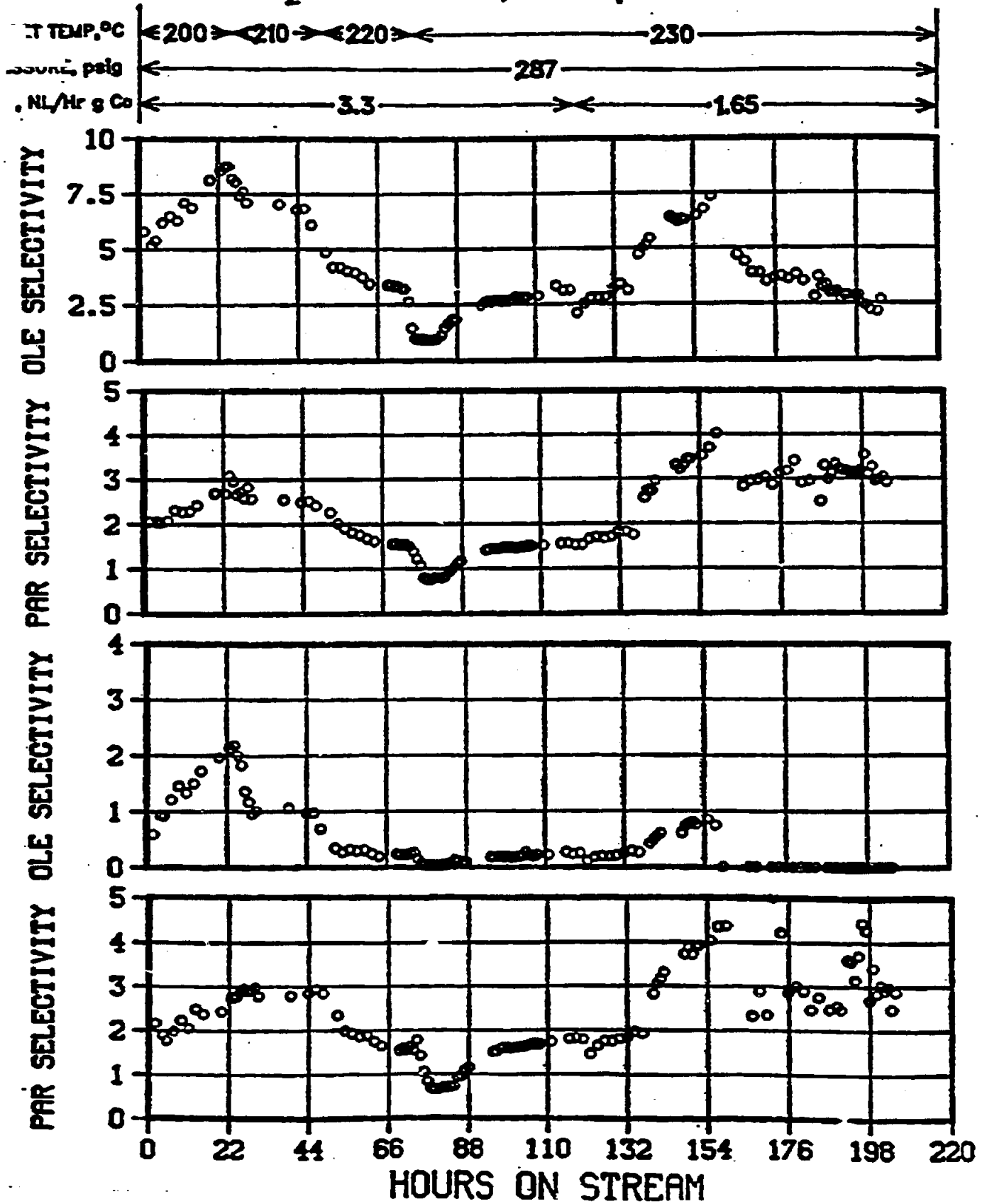


**FIGURE 148**

**COBALT BASE CATALYST IN THE SLURRY AUTOCLAVE REACTOR**  
**PLT 701 R-73 66.5g 6827-178 in 290g C<sub>30</sub> oil**  
**H<sub>2</sub>:CO in feed = 2.0, stirrer rpm = 1100**



**FIGURE 149**  
**COBALT BASE CATALYST IN THE SLURRY AUTOCLAVE REACTOR**  
**PLT 701 R-73 66.5g 6827-178 in 290g C<sub>30</sub> oil**  
**H<sub>2</sub>:CO In feed = 2.0, stirrer rpm = 1100**

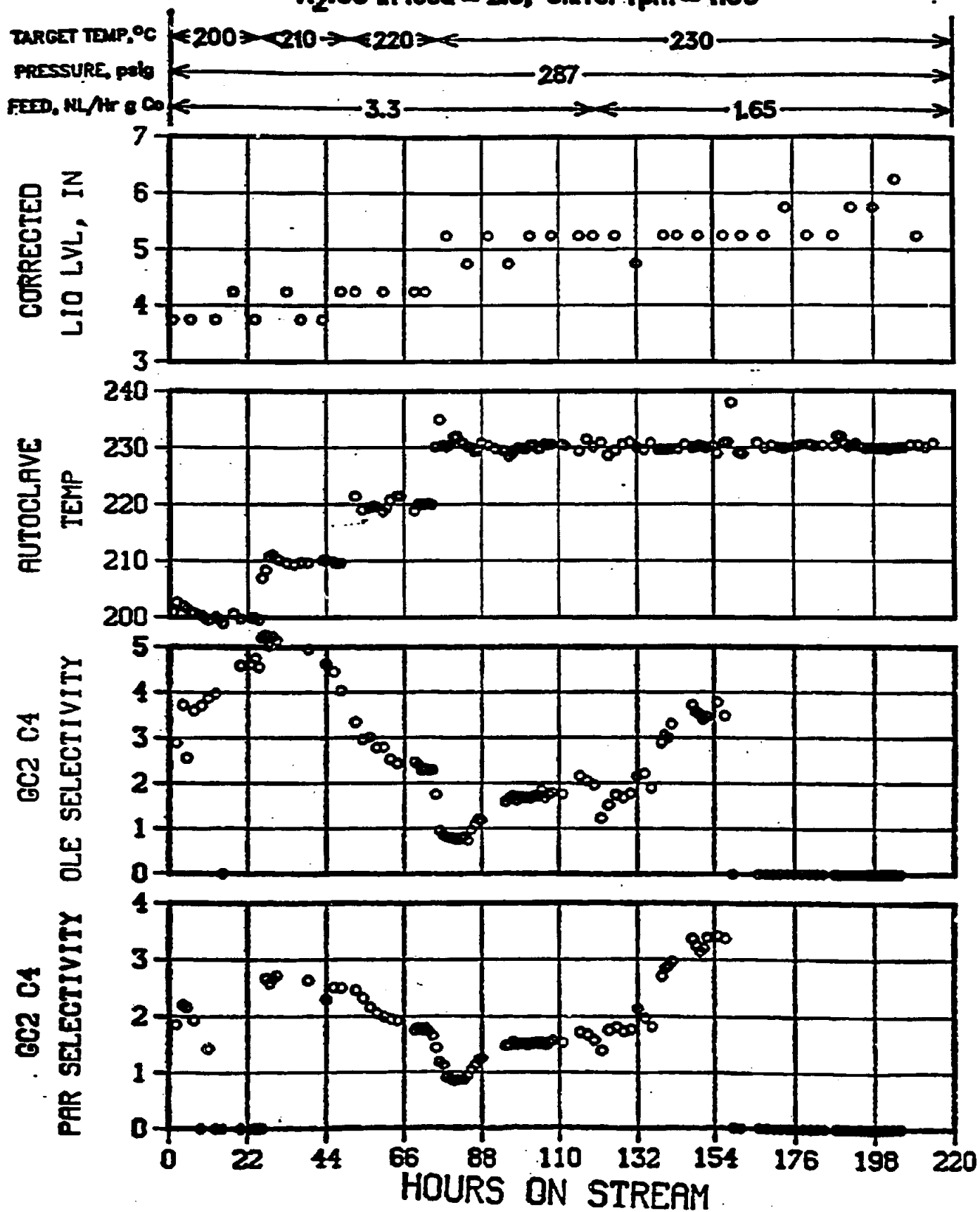
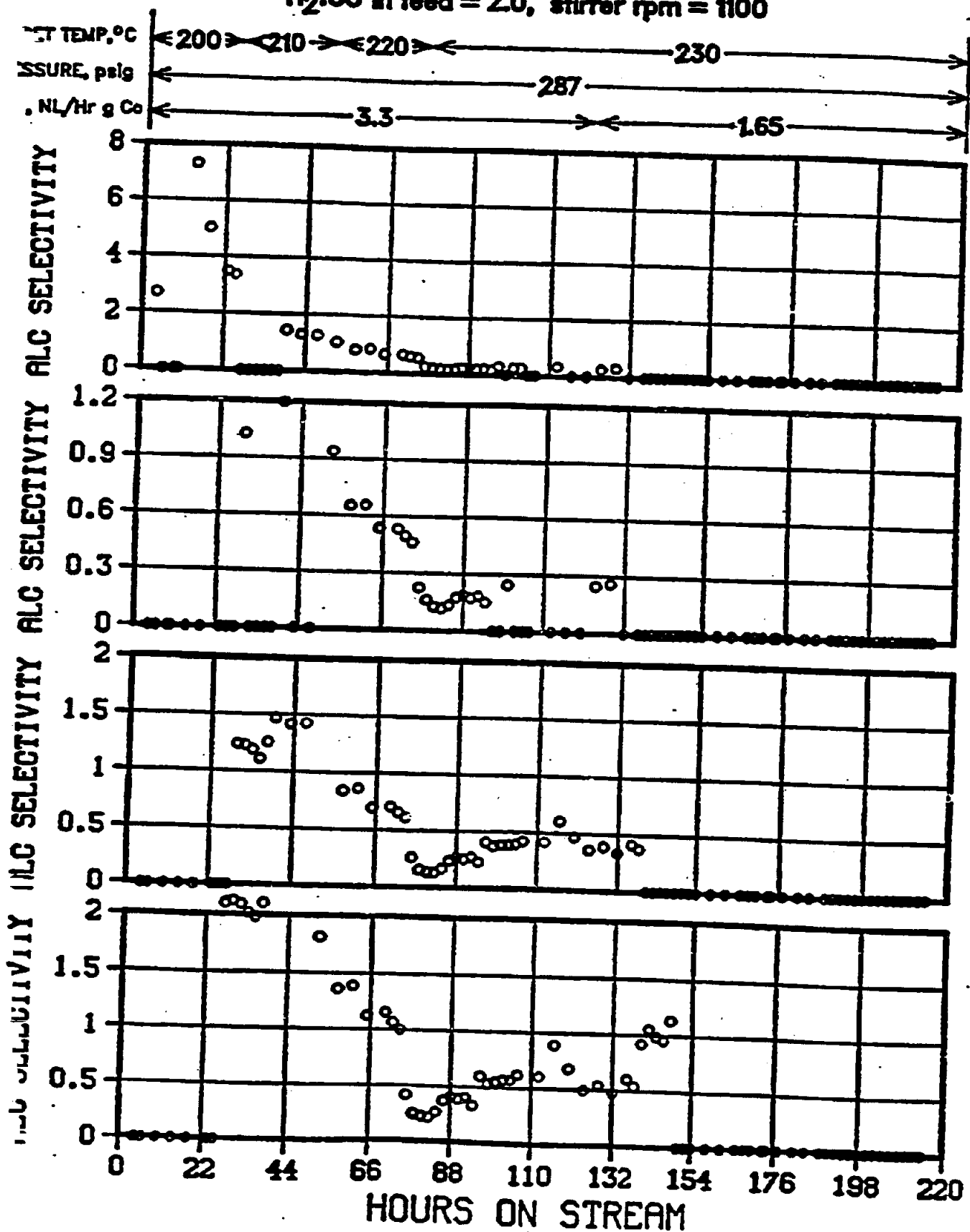


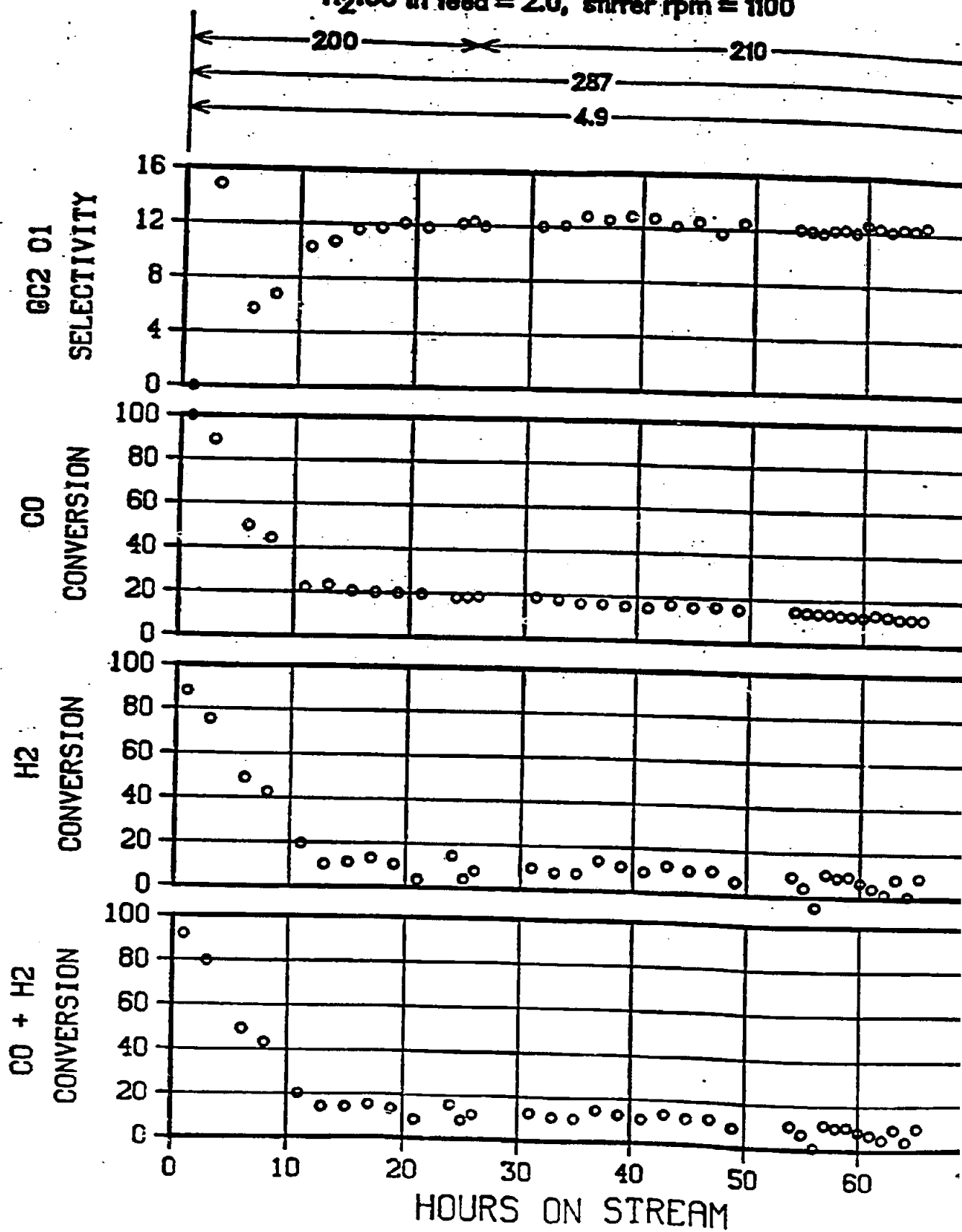
FIGURE 150

COBALT BASE CATALYST IN THE SLURRY AUTOCLAVE REACTOR  
PLT 701 R-73 66.5g 6827-178 in 290g C<sub>30</sub> oil

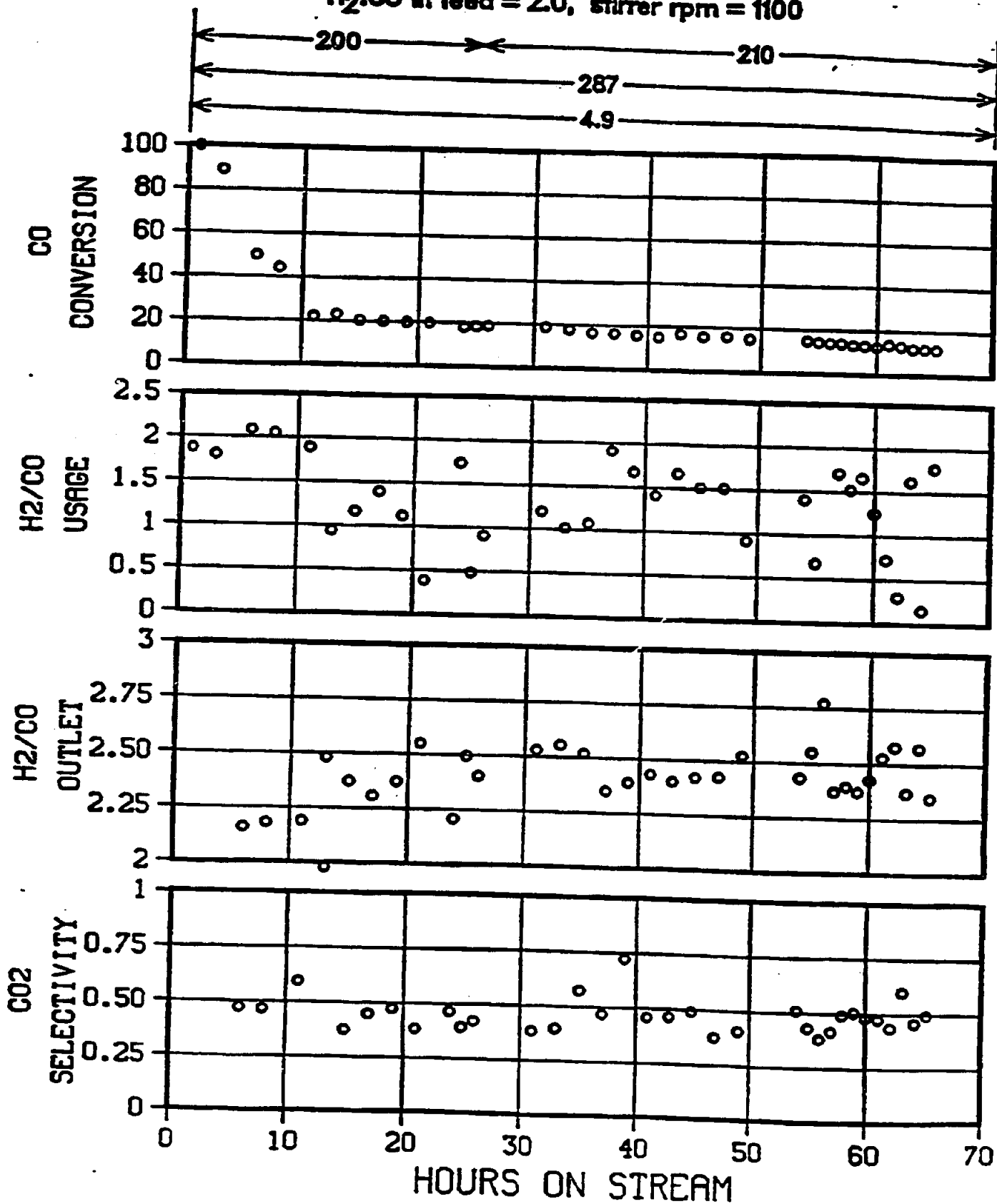
H<sub>2</sub>:CO In feed = 2.0, stirrer rpm = 1100



**FIGURE 151**  
**COBALT BASE CATALYST IN THE SLURRY AUTOCLAVE REACTOR**  
 PLT 701 R-74 77.99g 6827-183 in 290g C<sub>30</sub> oil  
 H<sub>2</sub>:CO in feed = 2.0, stirrer rpm = 1100



**FIGURE 152**  
**COBALT BASE CATALYST IN THE SLURRY AUTOCLAVE REACTOR**  
 PLT 701R-74 77.99g 6827-183 in 290g C<sub>30</sub> oil  
 H<sub>2</sub>:CO in feed = 2.0, stirrer rpm = 1100

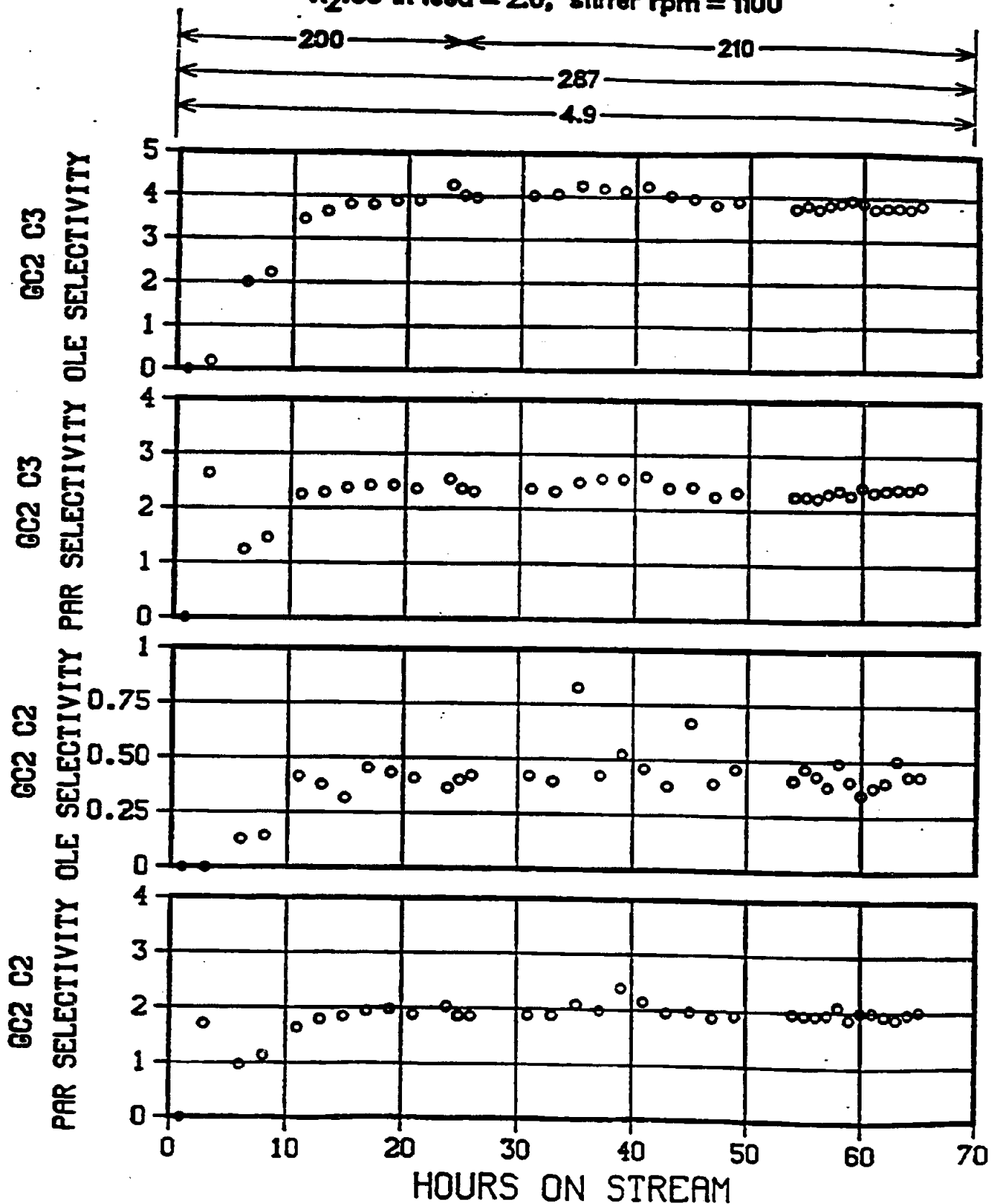


**FIGURE 153**

**COBALT BASE CATALYST IN THE SLURRY AUTOCLAVE REACTOR**

**PLT 701 R-74 77.99g 6827-183 in 290g C<sub>30</sub> oil**

**H<sub>2</sub>:CO in feed = 2.0, stirrer rpm = 1100**



**FIGURE 154**

**COBALT BASE CATALYST IN THE SLURRY AUTOCLAVE REACTOR**  
PLT 701 R-74 77.99g 6827-183 in 290g C<sub>30</sub> oil  
H<sub>2</sub>:CO in feed = 2.0, stirrer rpm = 1100

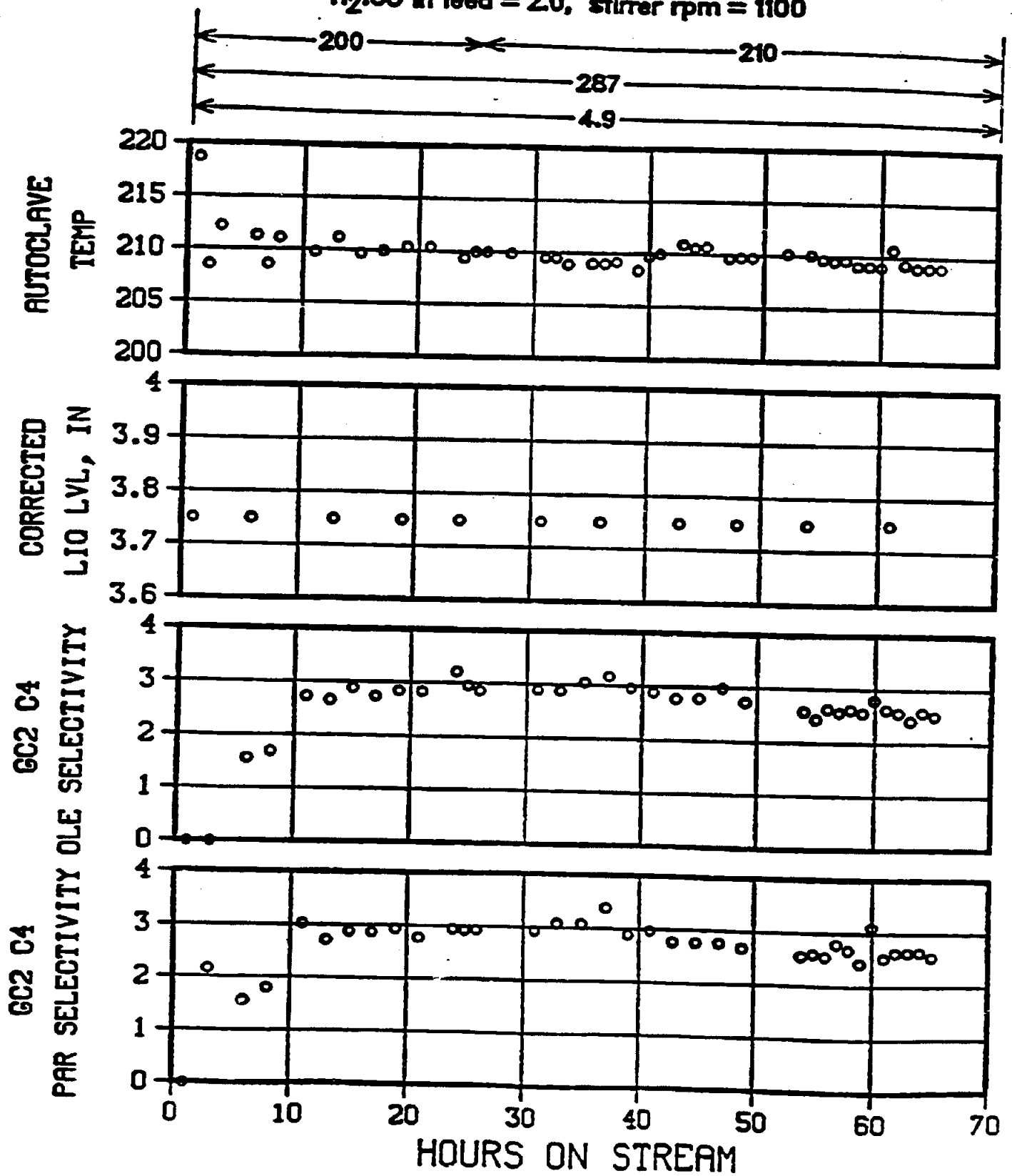
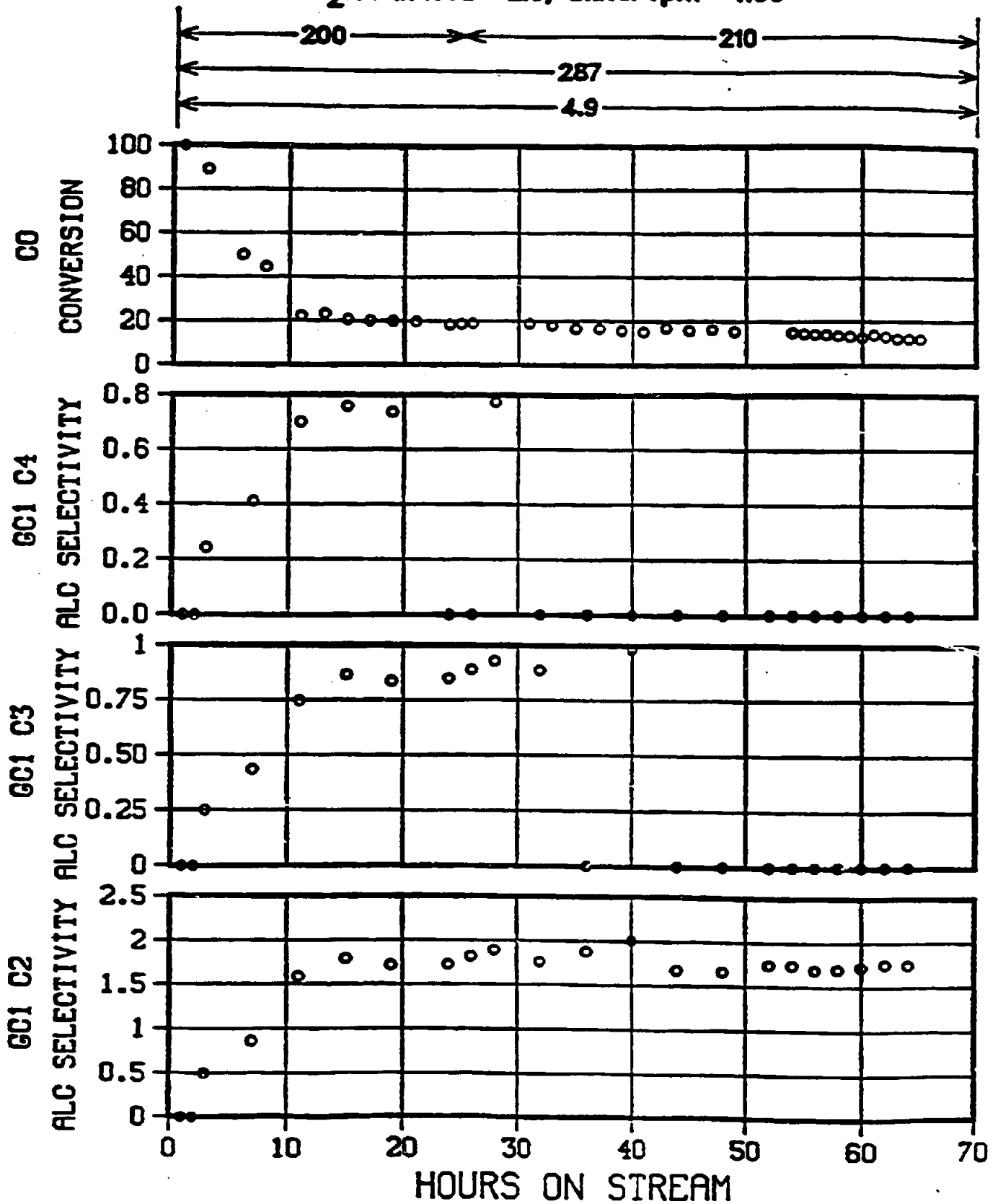


FIGURE 155

COBALT BASE CATALYST IN THE SLURRY AUTOCLAVE REACTOR  
PLT 701 R-74 77.99g 6827-183 in 290g C<sub>30</sub> oil  
H<sub>2</sub>:CO in feed = 2.0, stirrer rpm = 1100





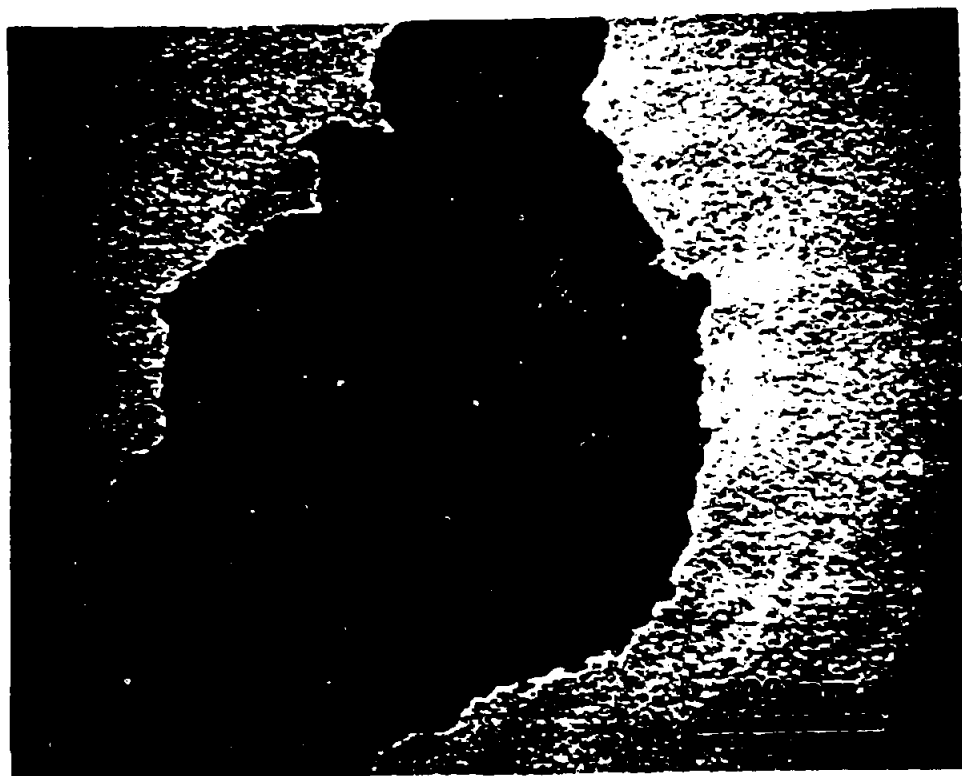
**FIGURE 156**  
**STEM**

*Reduced Ru-Free Catalyst*



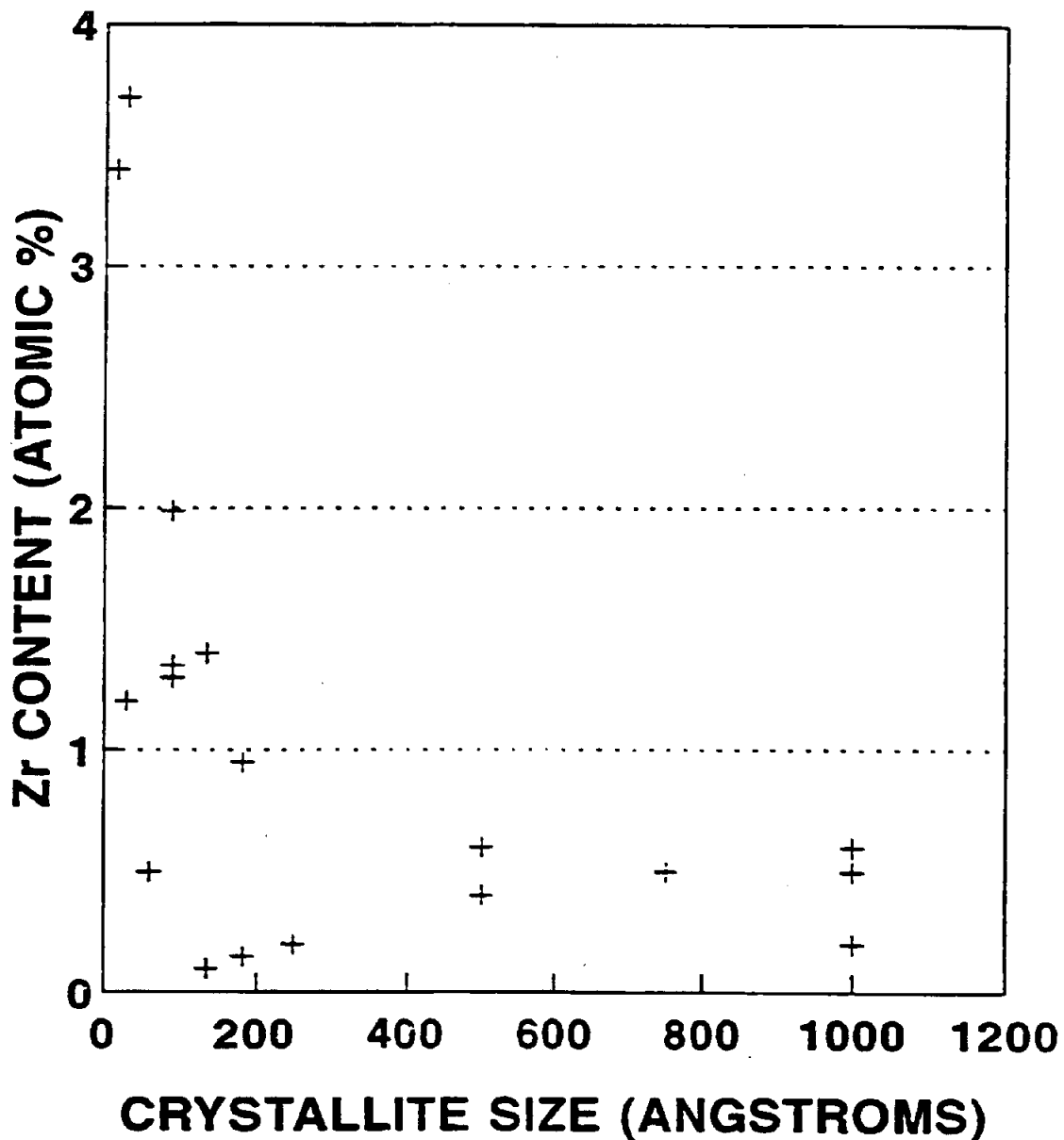
**FIGURE 157**  
**STEM**

*Reduced Ru-Free Catalyst*



**FIGURE 158**

**ZIRCONIUM CONTENT AS A FUNCTION OF CRYSTALLITE SIZE  
REDUCED FORM OF THE CATALYST**



+ Ru-FREE

Mn IN ALL CRYSTALLITES AT ABOUT SAME LEVEL