

**APPENDIX B - PHOTOGRAPHS OF REACTOR FABRICATION, SHIPMENT, AND
INSTALLATION**



Figure 1 - Fabrication of Reactor Shell

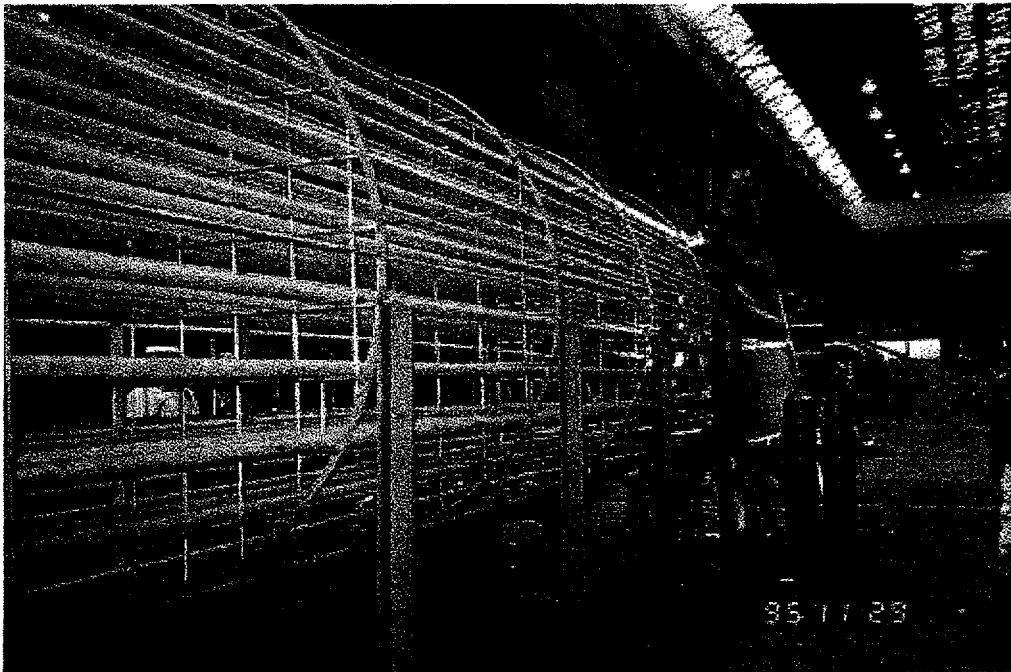


Figure 2 - Fabrication of Internal Heat Exchanger

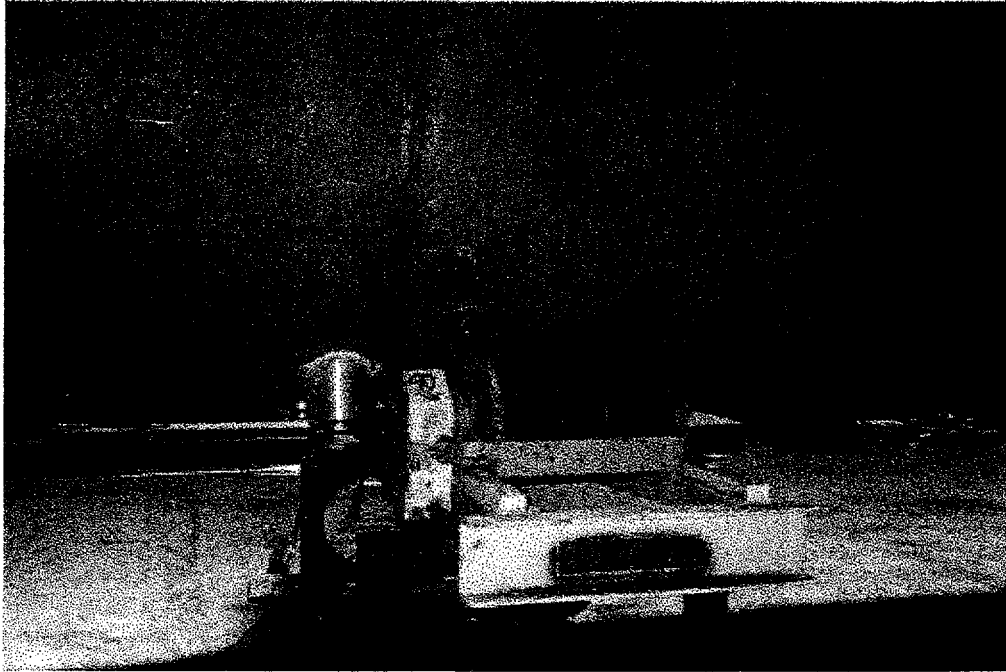


Figure 3 - Nozzle Interference with Power Rollers

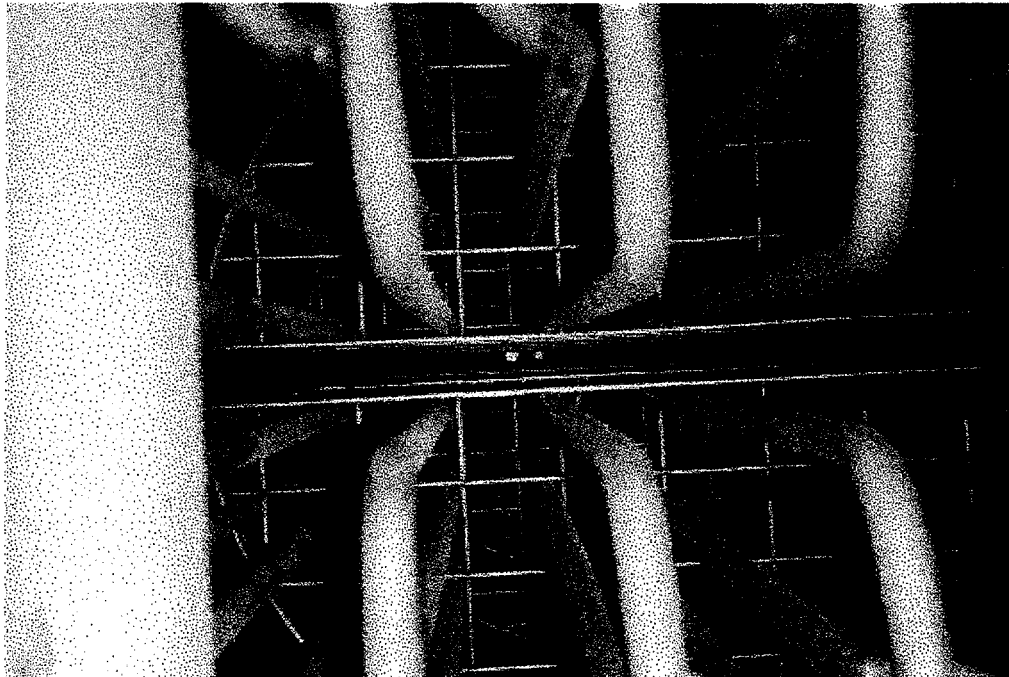


Figure 4 - Nuclear Density Gauge "Window" through Internal Heat Exchanger

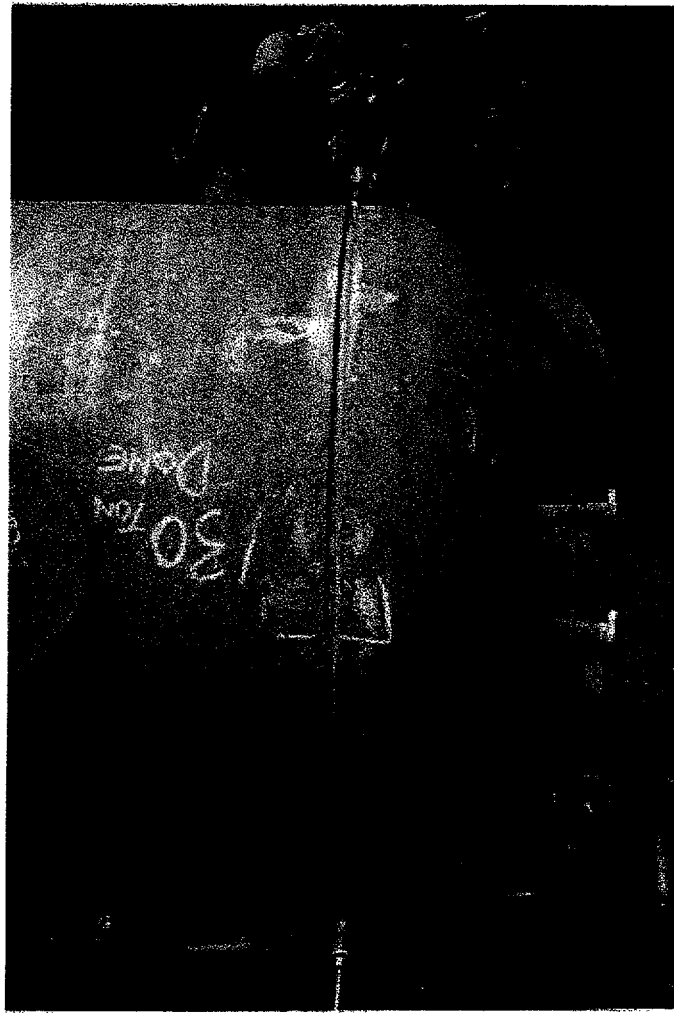


Figure 5 - Welding of Head-to-Shell Seam

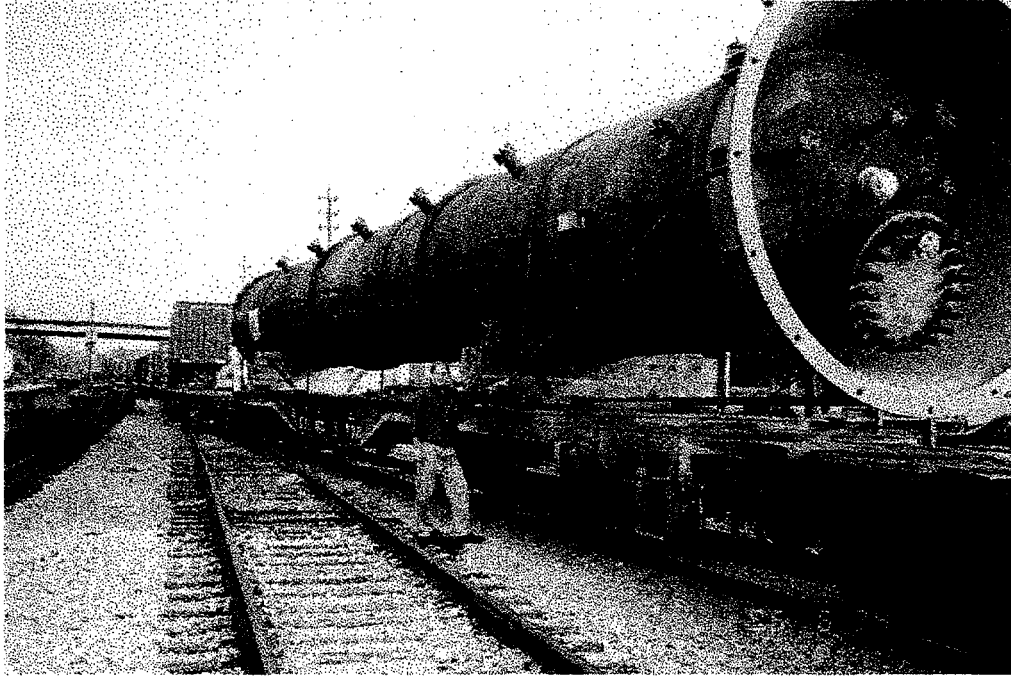


Figure 6 - Reactor Loaded on Rail Car

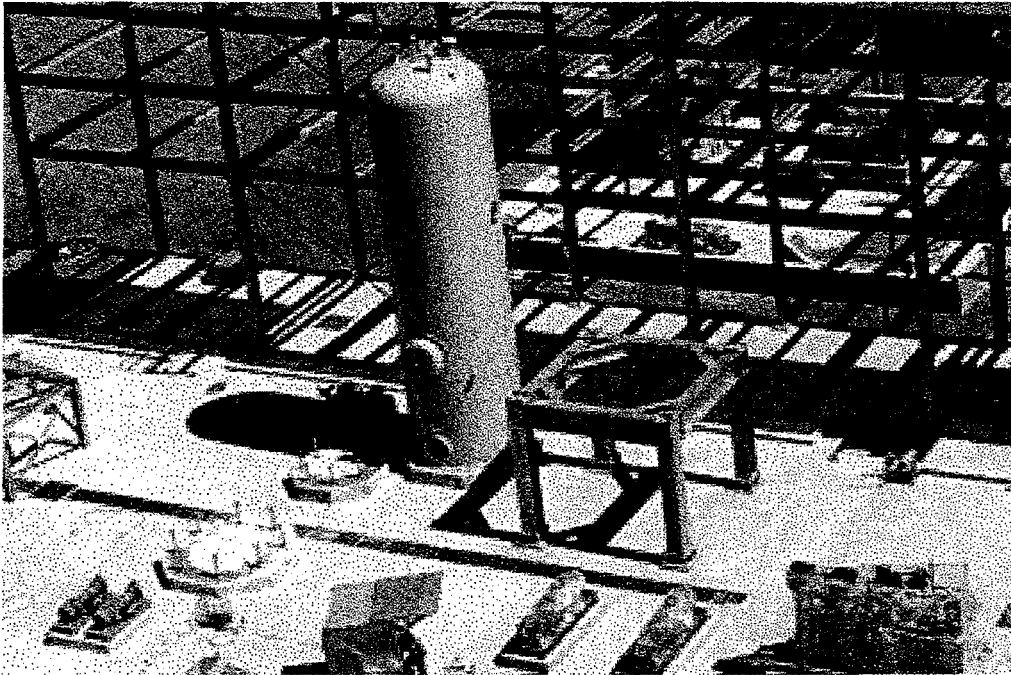


Figure 7 - "Tabletop" for Reactor Mounting

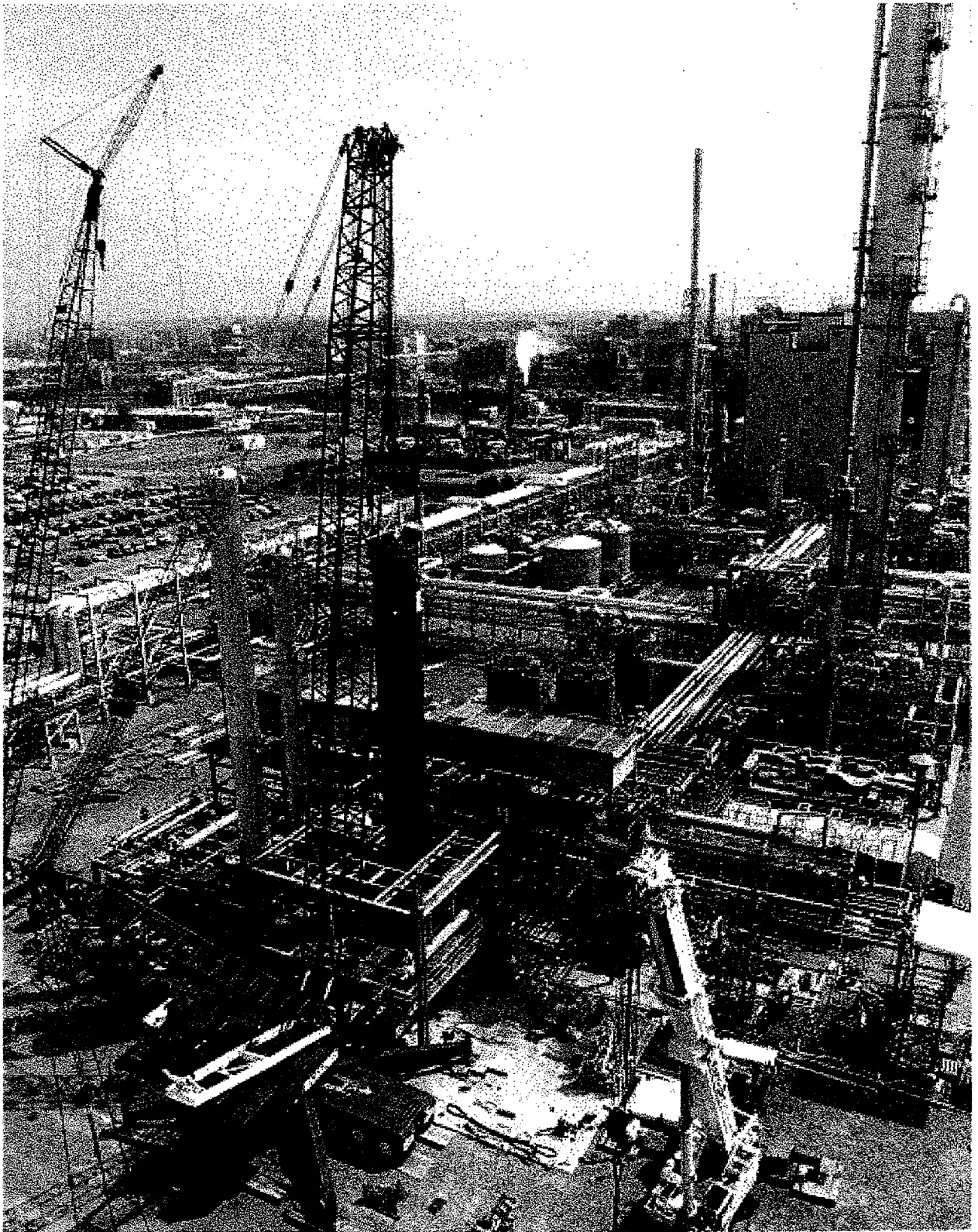


Figure 8 - Reactor Installation

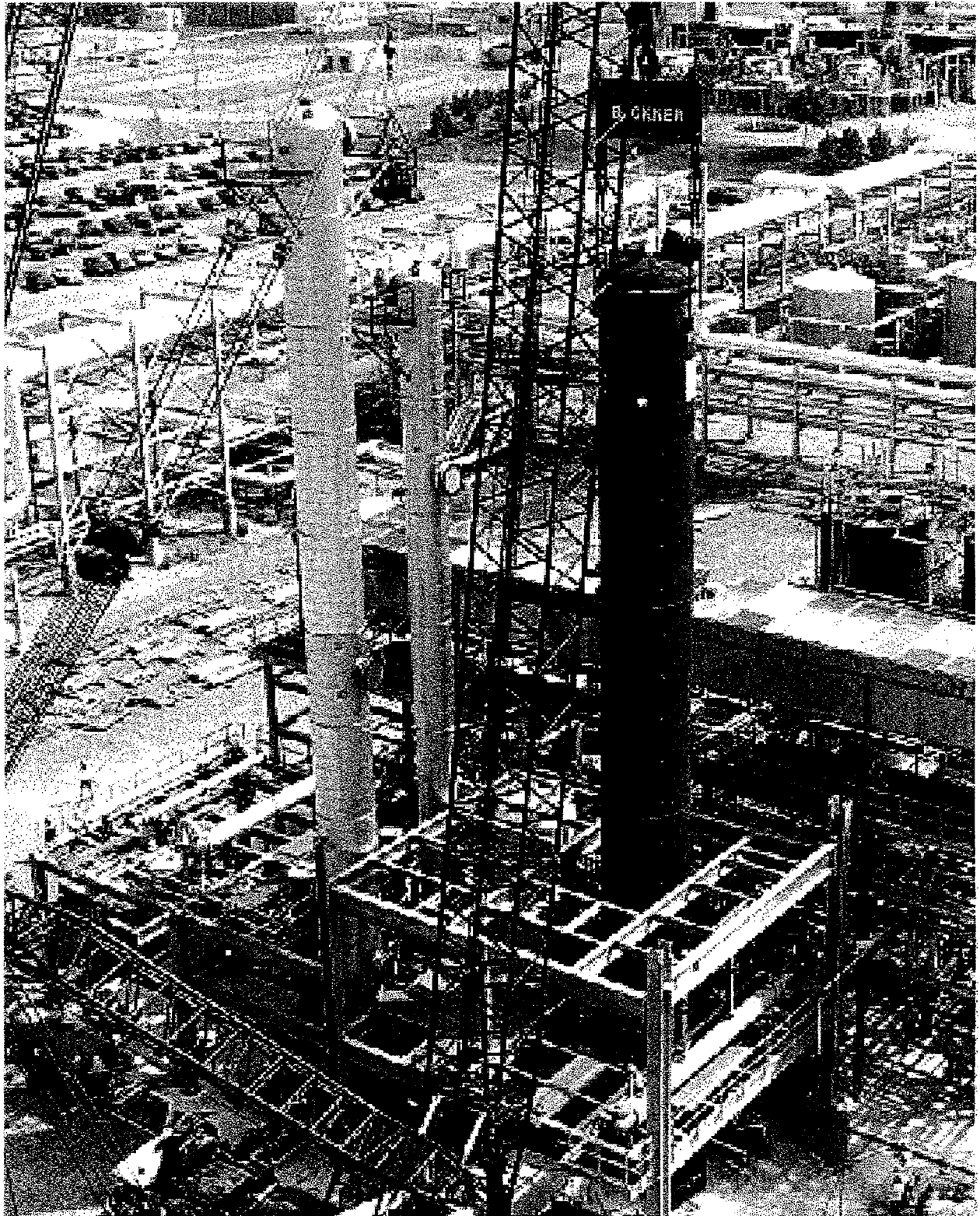


Figure 9 - Reactor Installation