

SCRAPER DUMPING TOP SOIL

SCRAPER

SCRAPER LOADING TOP SOIL

DOZER

SHOVEL LOADING OVERBURDEN  
INTO END-DUMP TRUCK

DOZER

COAL LOADING

K BED

DOZER

TRUCK

SHOVEL LOADING OVERBURDEN  
INTO END-DUMP TRUCK

DOZER

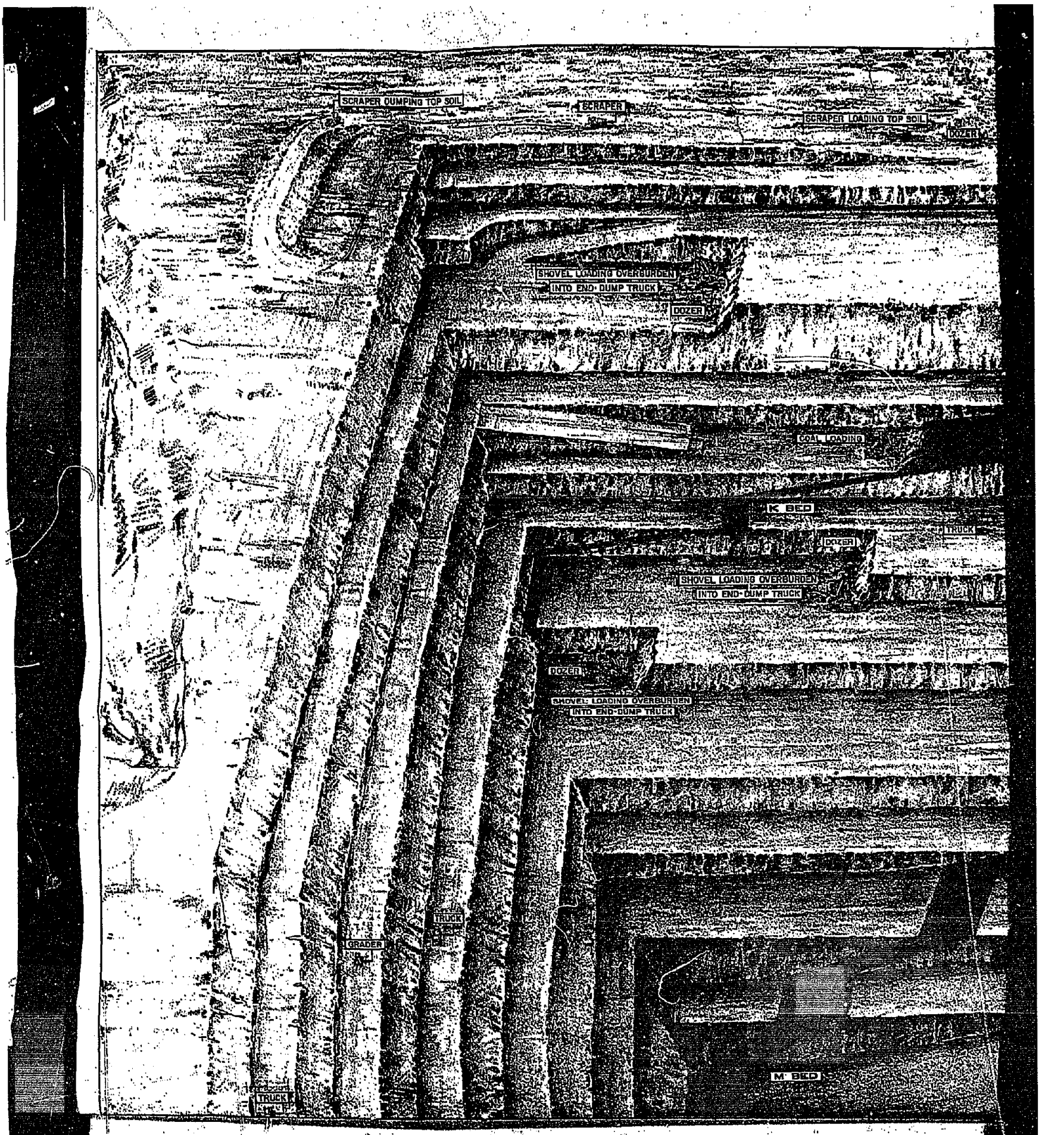
SHOVEL LOADING OVERBURDEN  
INTO END-DUMP TRUCK

GRADER

TRUCK

TRUCK

M BED



UNDISTURBED AREA

PARKED SHOVEL

GRADER

TRUCK

DOZER PUSHING COAL

MOBILE CRUSHER

TRUCK

C BED

MOBILE CRUSHER

PARKED SHOVEL

DOZER PUSHING COAL

COAL LOADING

TRUCK

C BED

DOZER

TRUCK DUMPING

TRUCK DUMPING

COAL CONVEYOR

UNDISTURBED AREA

COAL CONVEYOR

COAL CONVEYOR

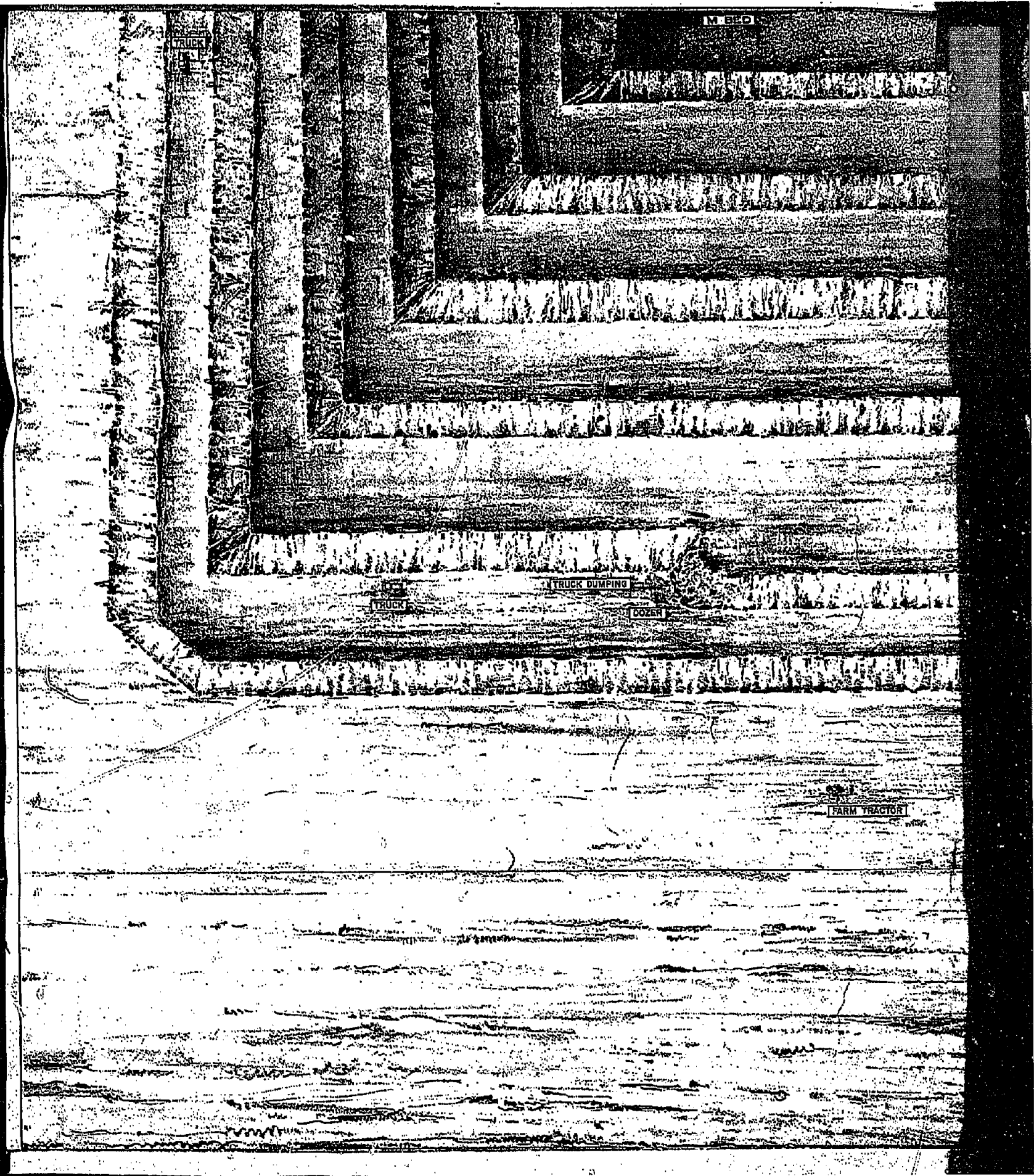
100

EXHIBIT FF

UNDISTURBED AREA

COAL CONVEYOR





TRUCK

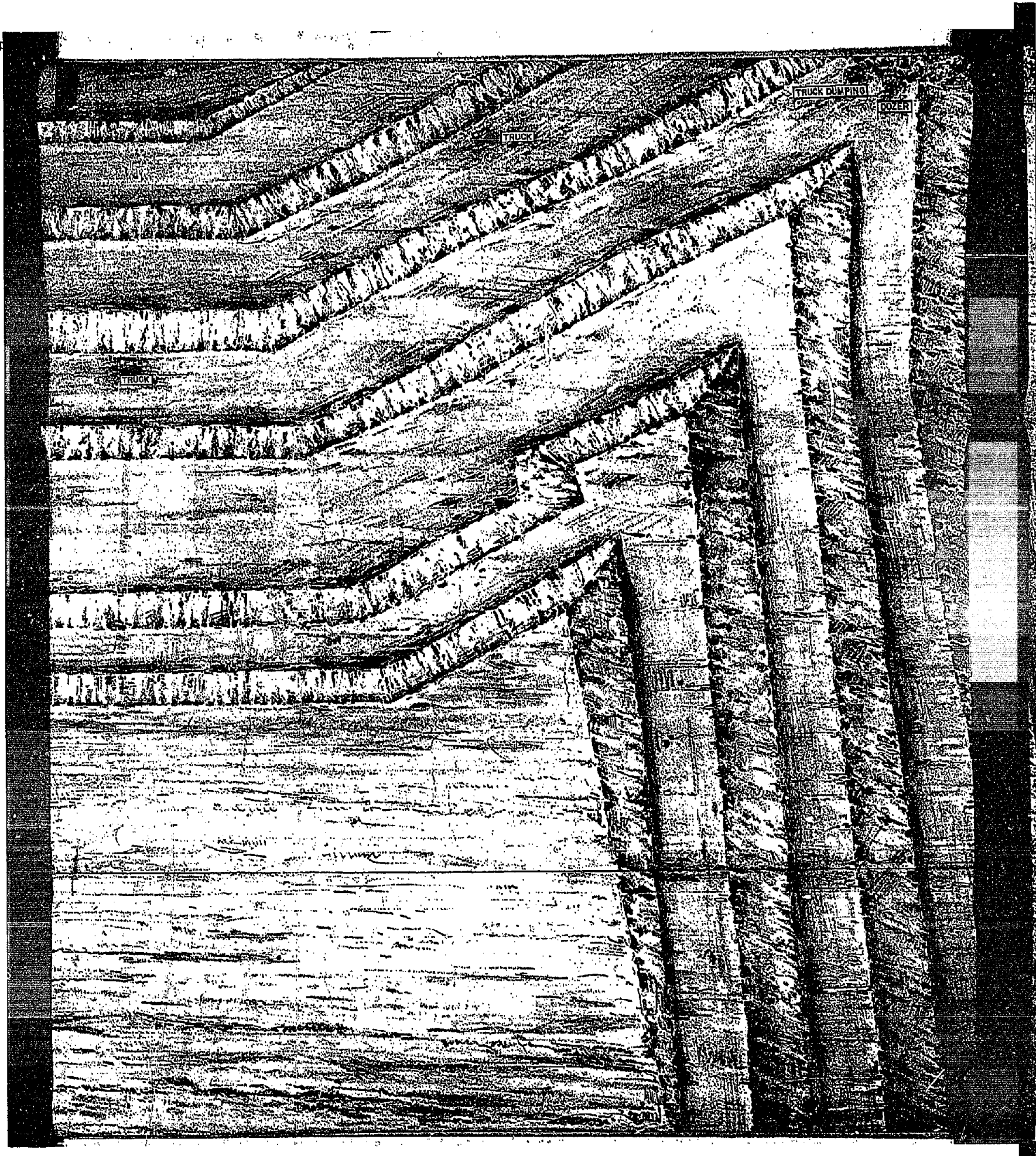
M.B.D.

TRUCK DUMPING

TRUCK

DOZER

FARM TRACTOR

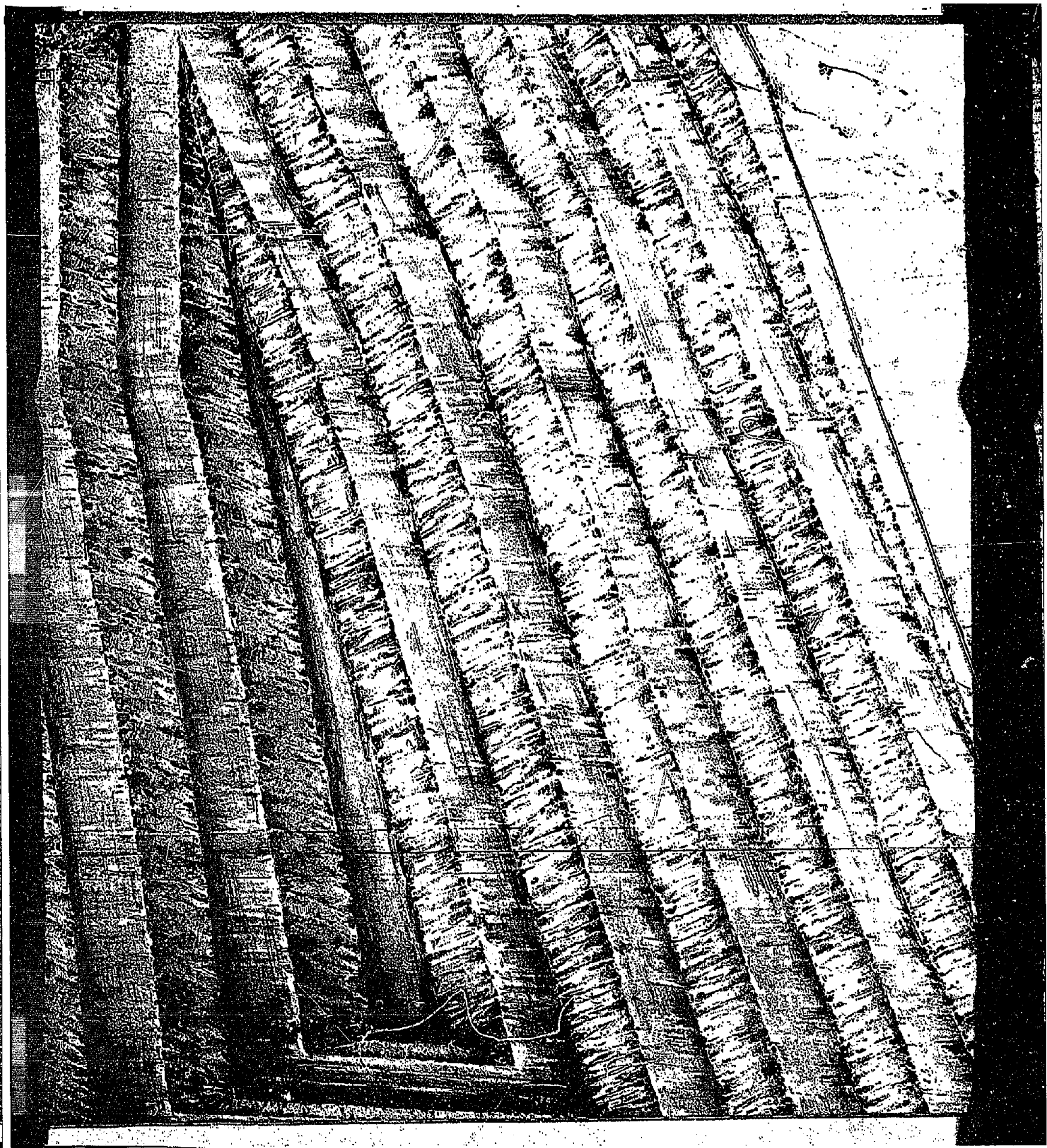


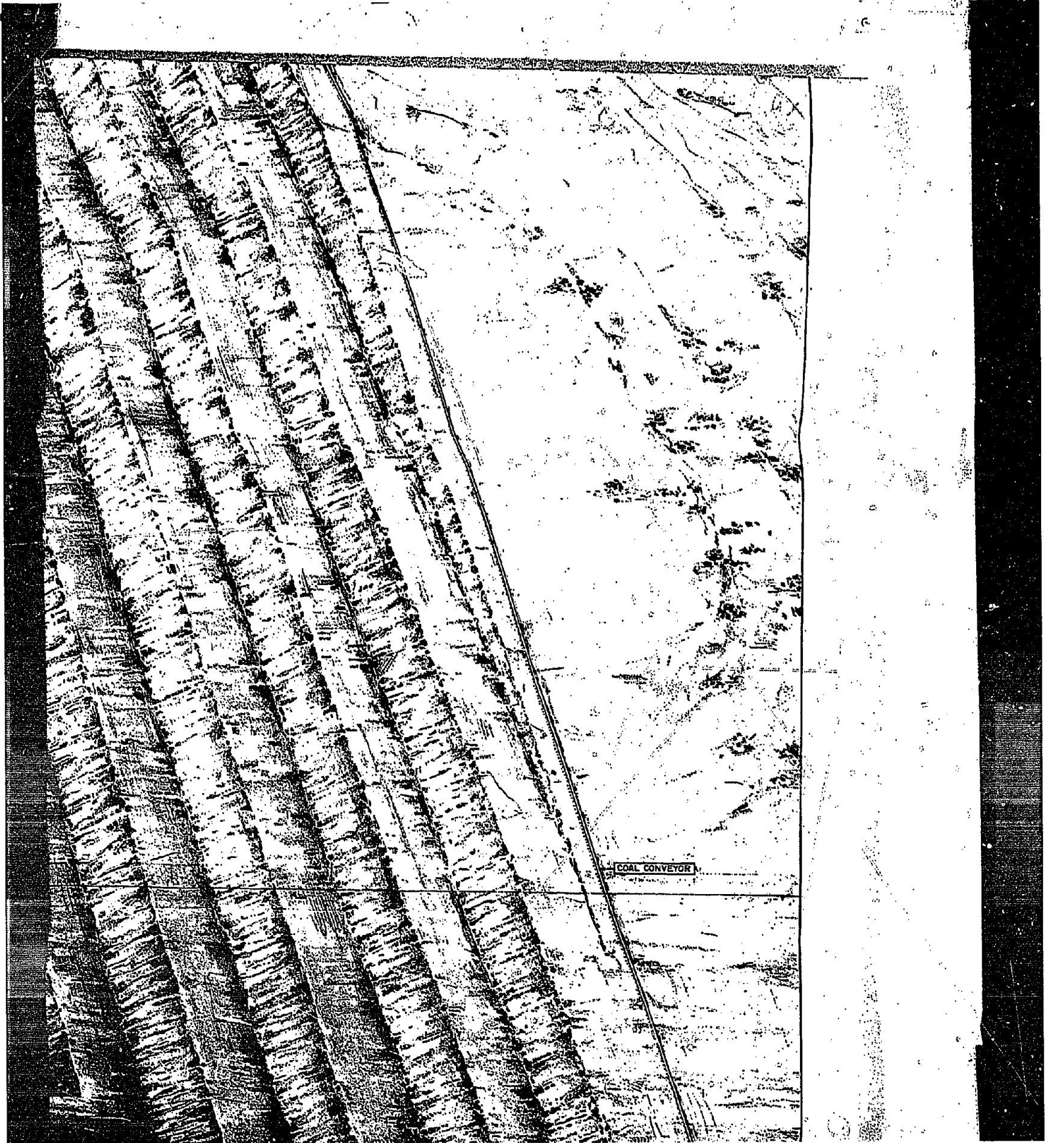
TRUCK

TRUCK DUMPING

DOZER

TRUCK









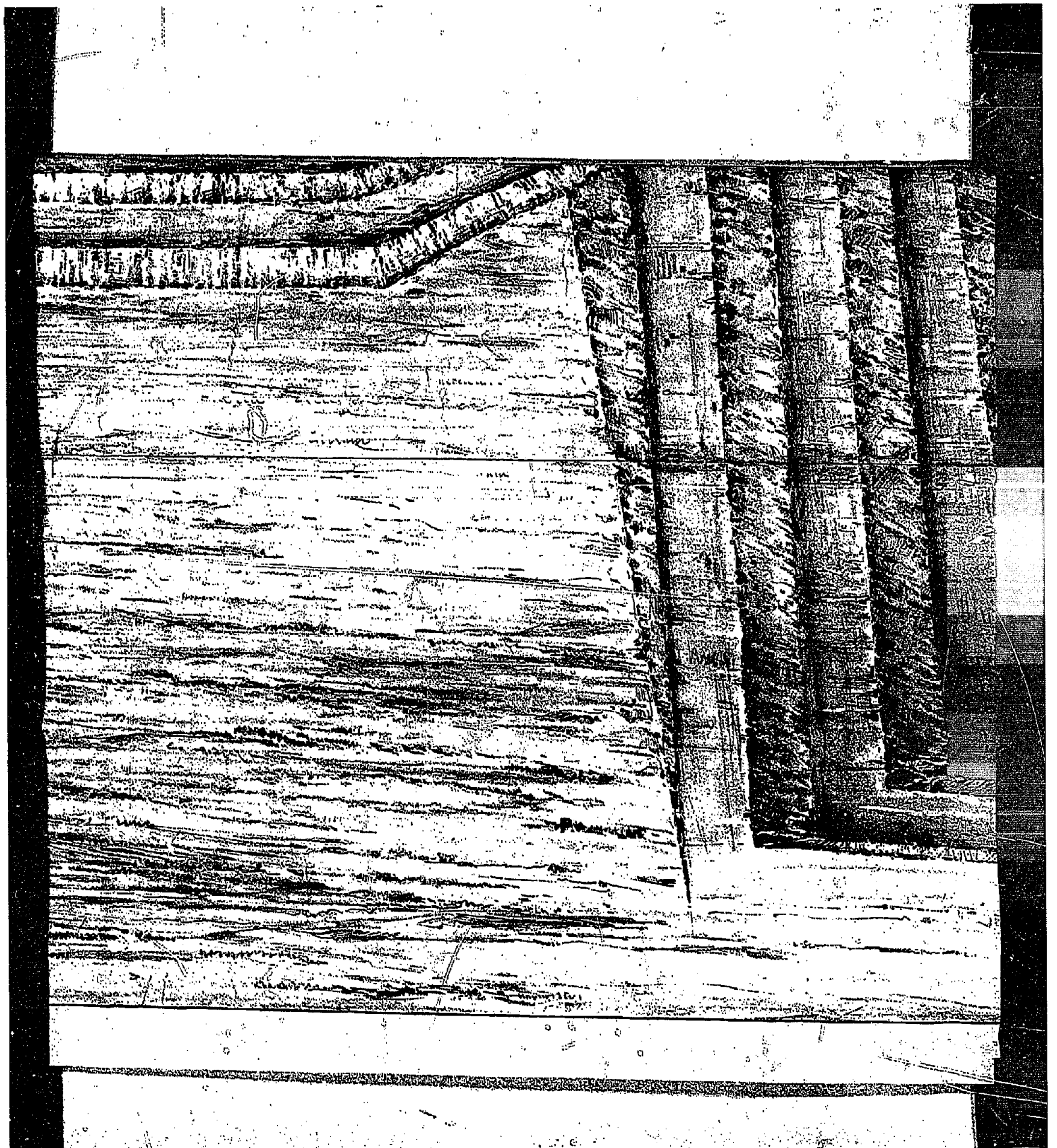
TRUCK

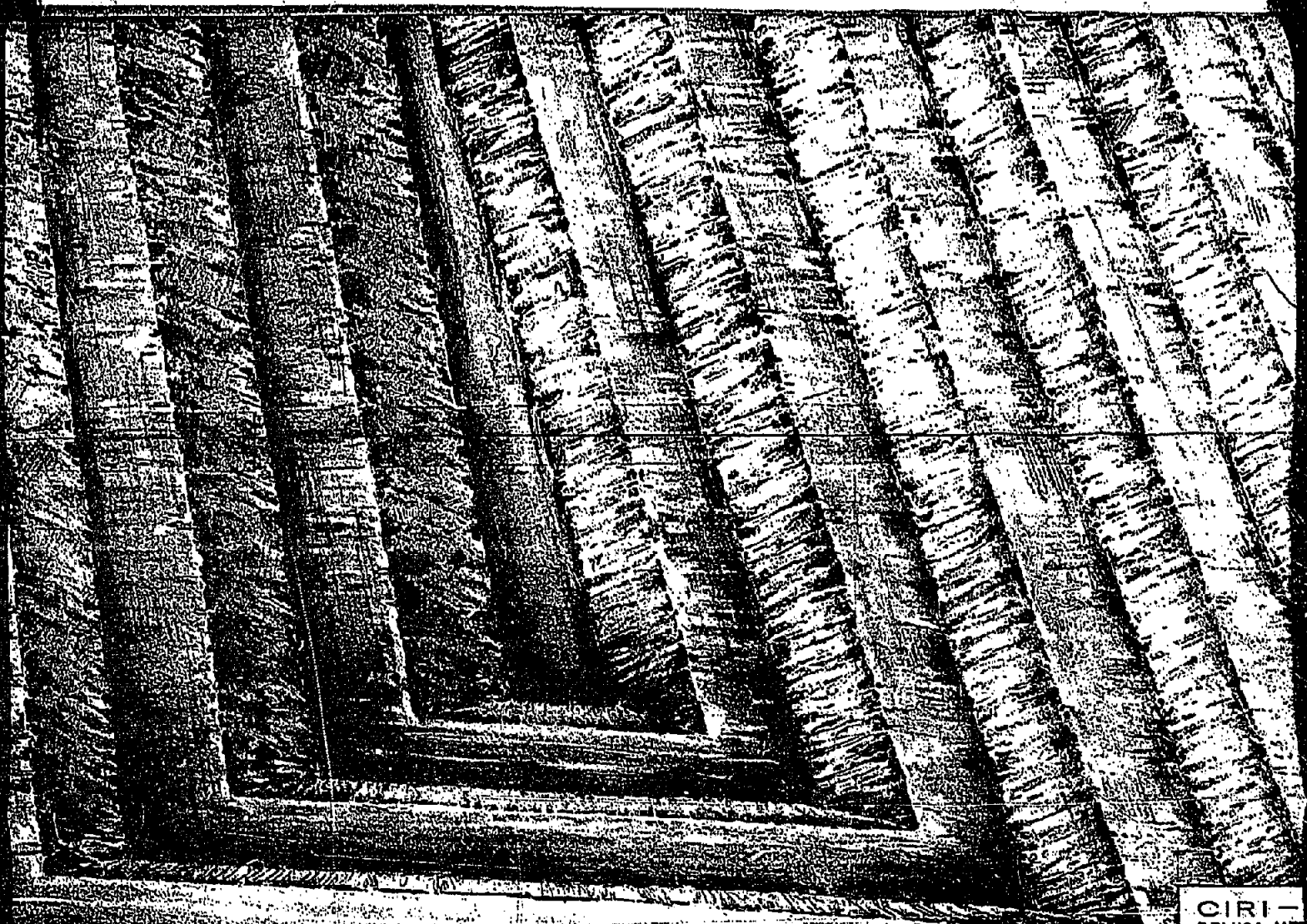
TRUCK DUMPING

DOZER

FARM TRACTOR

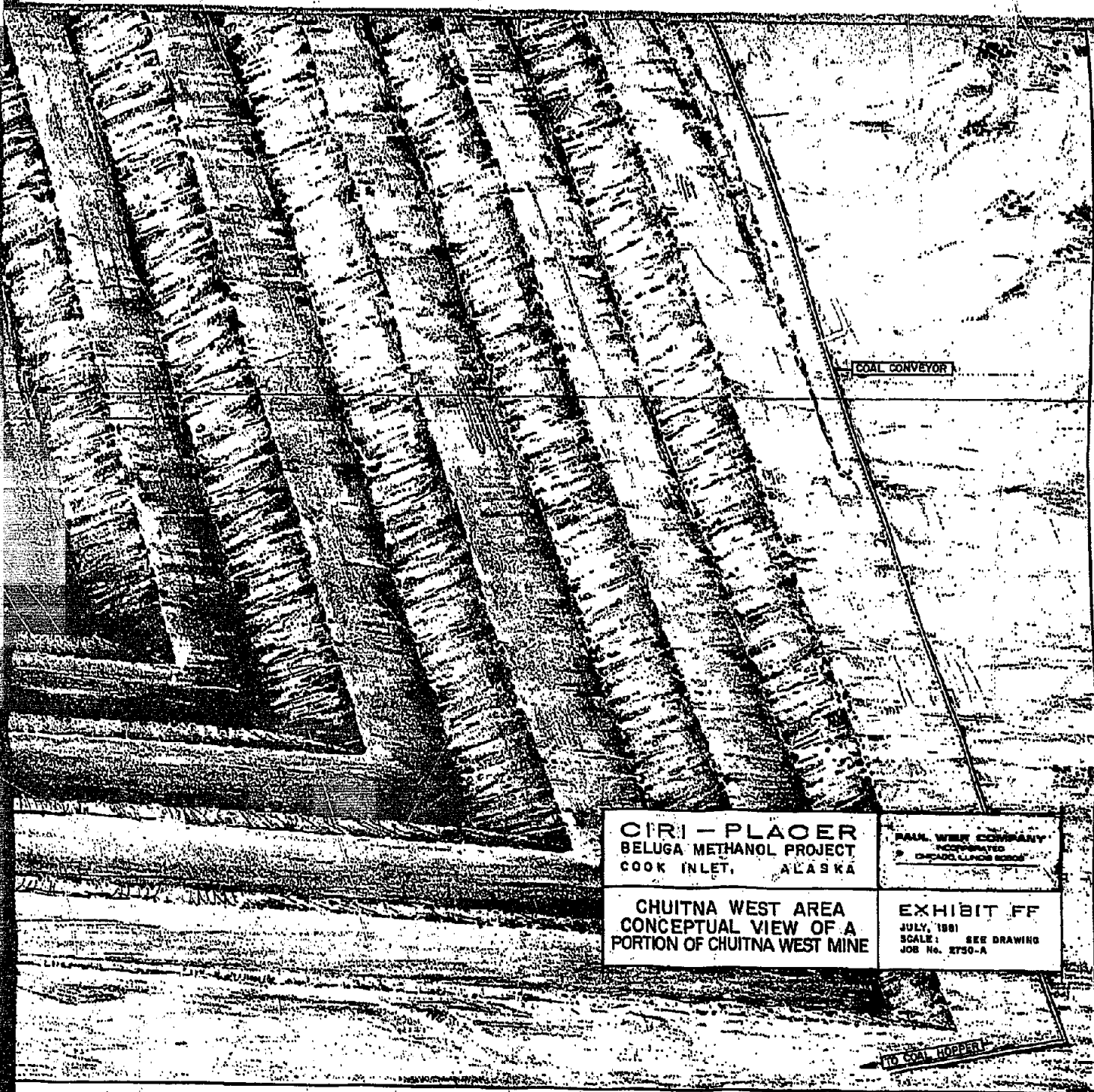
RECLAIMED AREA





CIRI -  
BELUGA MET  
COOK INLE

CHUITNA  
CONCEPTUA  
PORTION OF CH



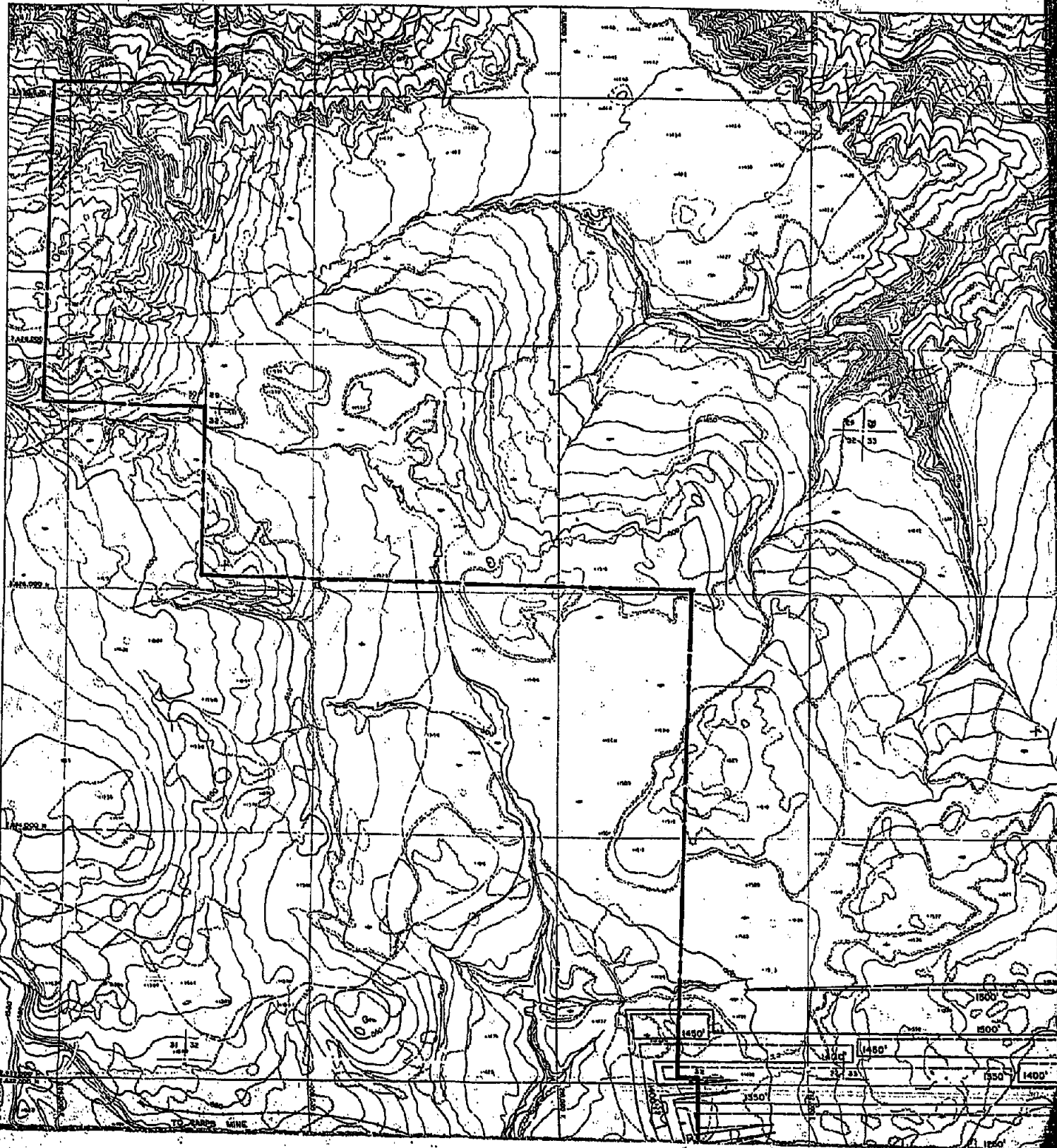
CIRI - PLACER  
BELUGA METHANOL PROJECT  
COOK INLET, ALASKA

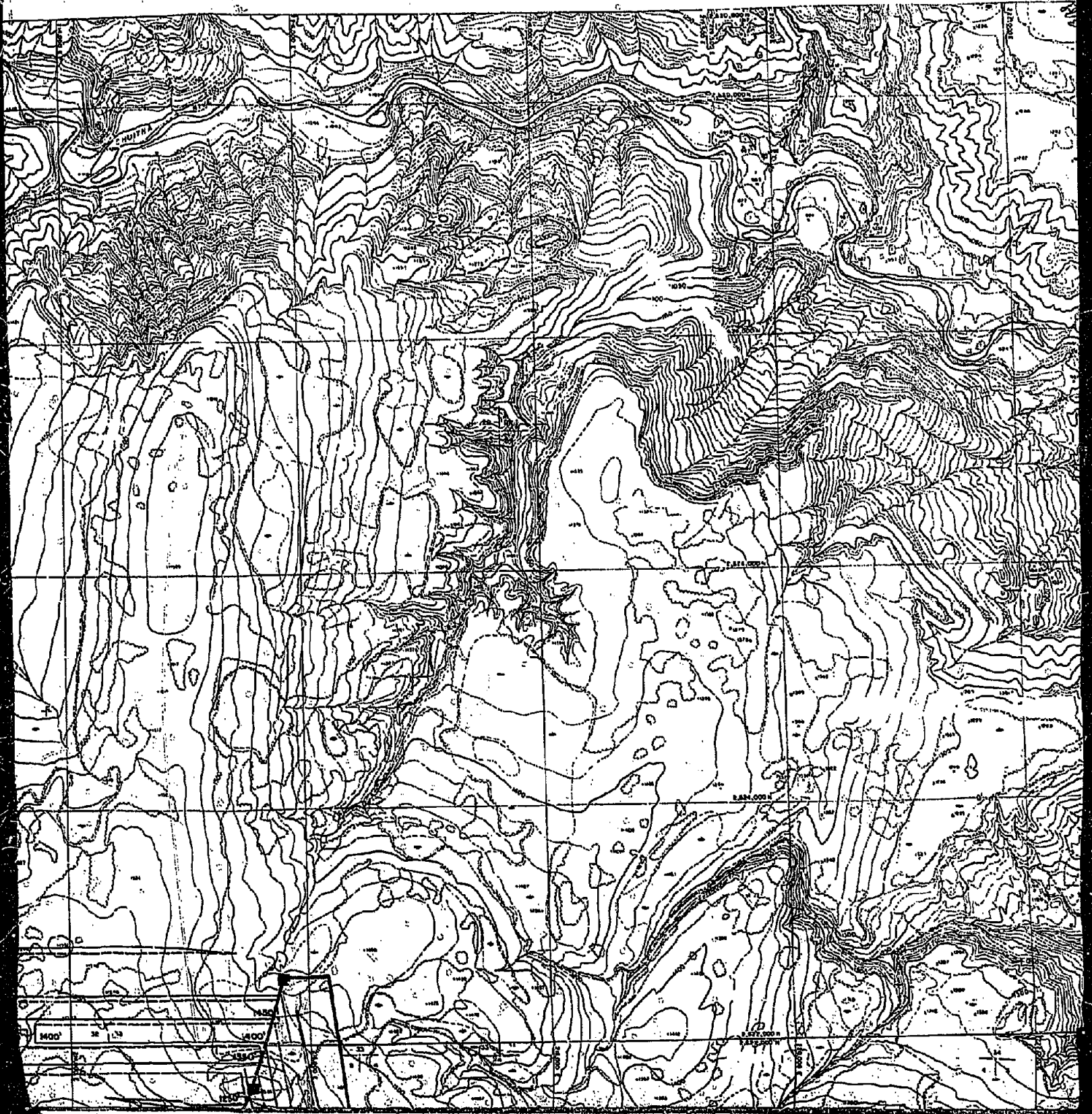
PAUL WEBB COMPANY  
INCORPORATED  
CHICAGO, ILLINOIS 60601

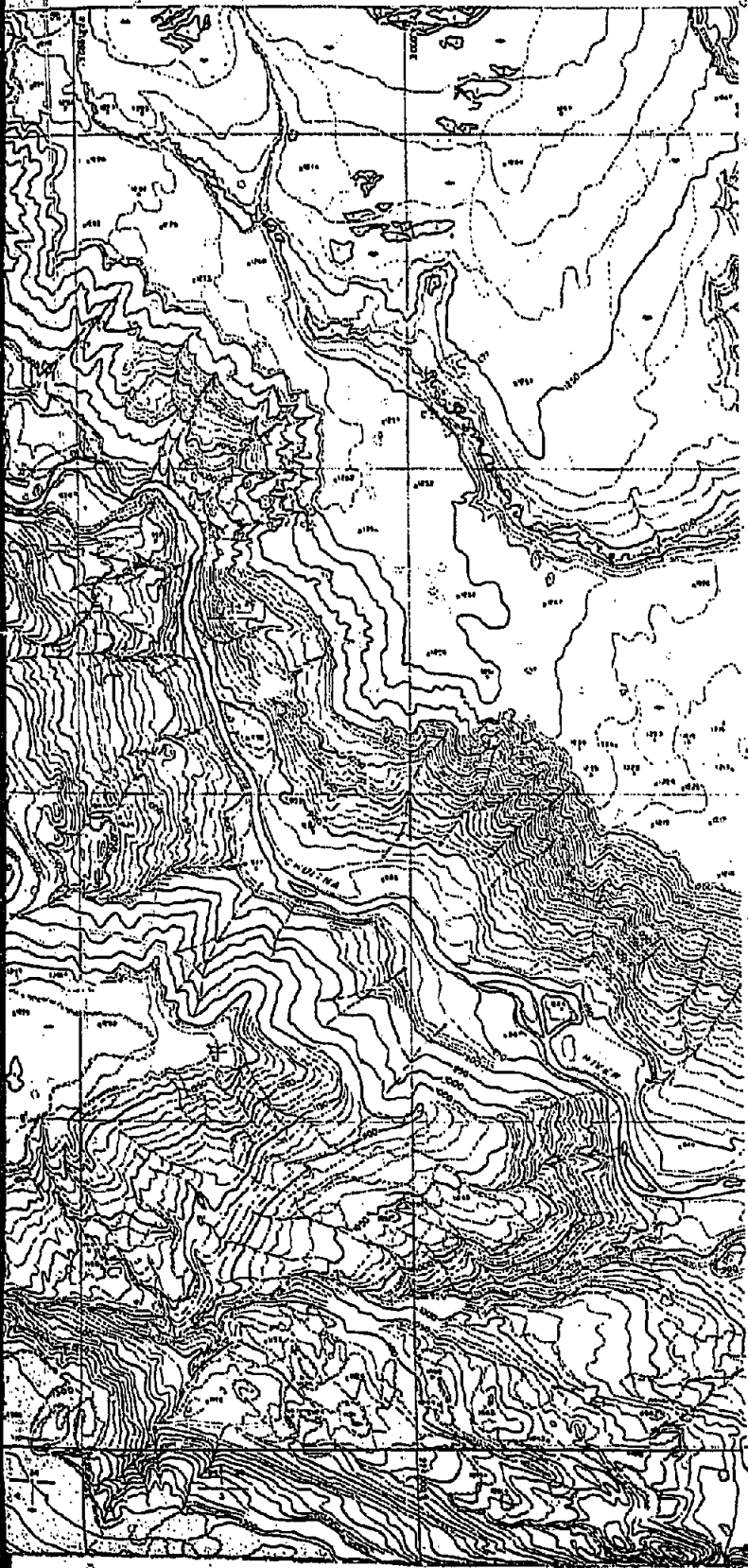
CHUITNA WEST AREA  
CONCEPTUAL VIEW OF A  
PORTION OF CHUITNA WEST MINE

EXHIBIT FF  
JULY, 1991  
SCALE: SEE DRAWING  
JOB No. 8750-A

TO COAL HOPPER







LEGEND

- PROPERTY LINE —————
- TOP OF CUT OR FILL BENCH & ELEVATION
- BOTTOM OF CUT OR FILL BENCH & ELEVATION
- DUMP STATIONS —————

# EXHIBIT - GG

## LEGEND

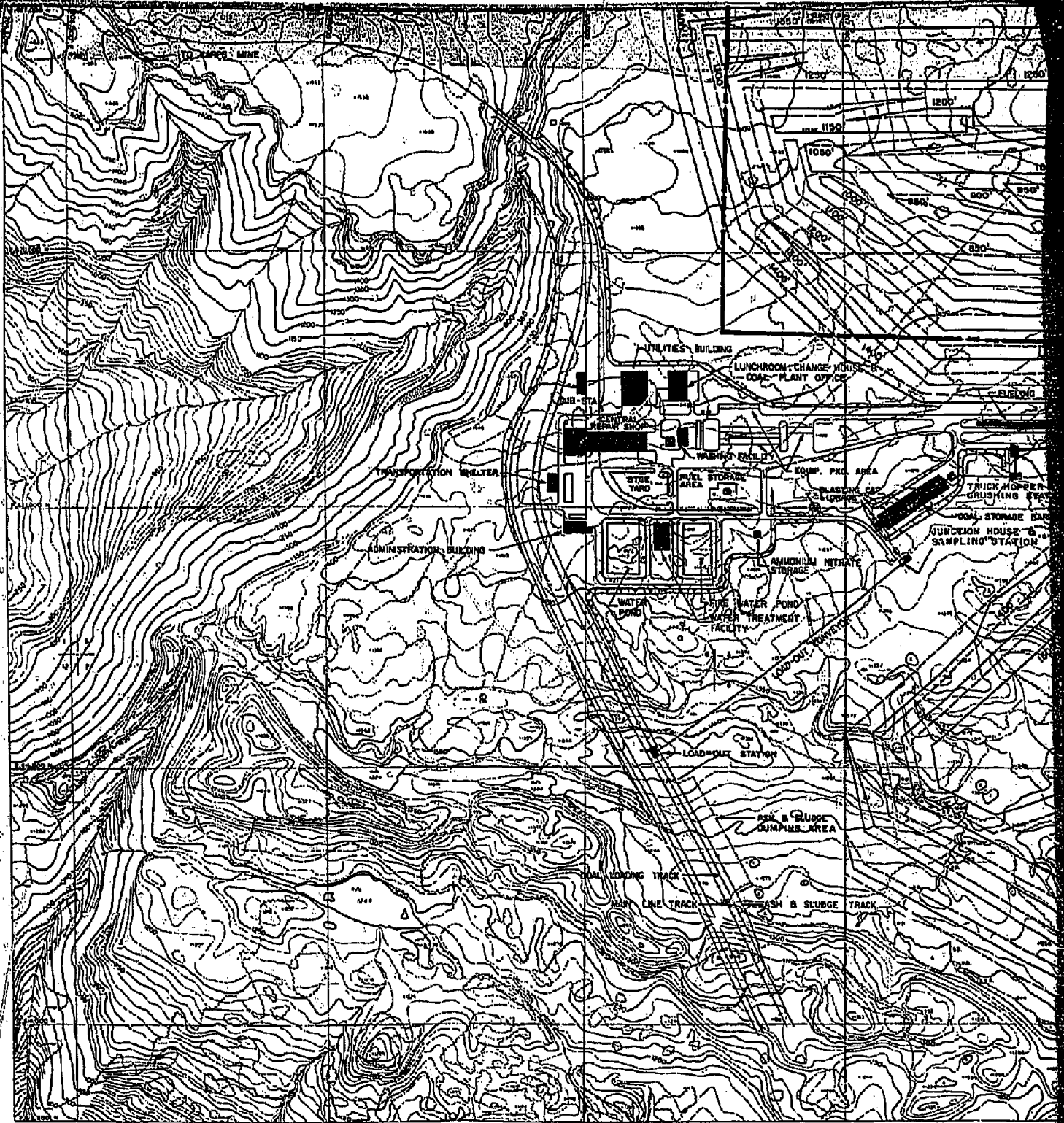
PROPERTY LINE —————

TOP OF CUT OR FILL BENCH & ELEVATION ————— 1500'

BOTTOM OF CUT OR FILL BENCH & ELEVATION ————— 1500'

DUMP STATIONS ————— ■







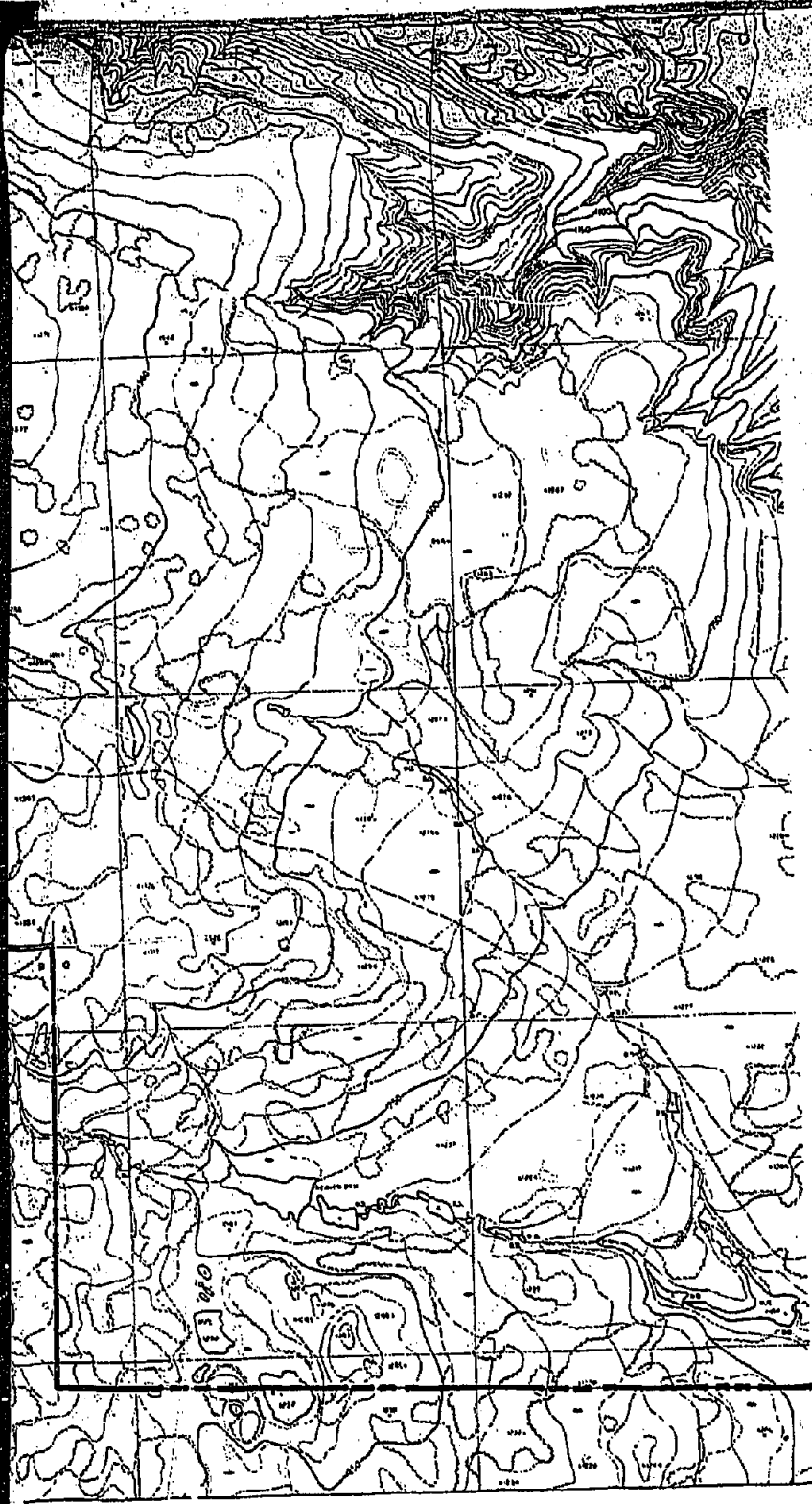
1200'  
1100'  
1000'  
900'  
800'  
700'  
600'  
500'  
400'  
300'  
200'  
100'

1800'  
1700'  
1600'  
1500'  
1400'  
1300'  
1200'  
1100'  
1000'  
900'  
800'  
700'  
600'  
500'  
400'  
300'  
200'  
100'

1800'  
1700'  
1600'  
1500'  
1400'  
1300'  
1200'  
1100'  
1000'  
900'  
800'  
700'  
600'  
500'  
400'  
300'  
200'  
100'

1800'  
1700'  
1600'  
1500'  
1400'  
1300'  
1200'  
1100'  
1000'  
900'  
800'  
700'  
600'  
500'  
400'  
300'  
200'  
100'

1800'  
1700'  
1600'  
1500'  
1400'  
1300'  
1200'  
1100'  
1000'  
900'  
800'  
700'  
600'  
500'  
400'  
300'  
200'  
100'



**CIRI-PLAC**  
**BELUGA METHANO**  
**COOK INLET, ALASKA**

---

**PROJECTED MINING**  
**THRU YEAR**  
**CHUITNA WEST**

0  
SC

N

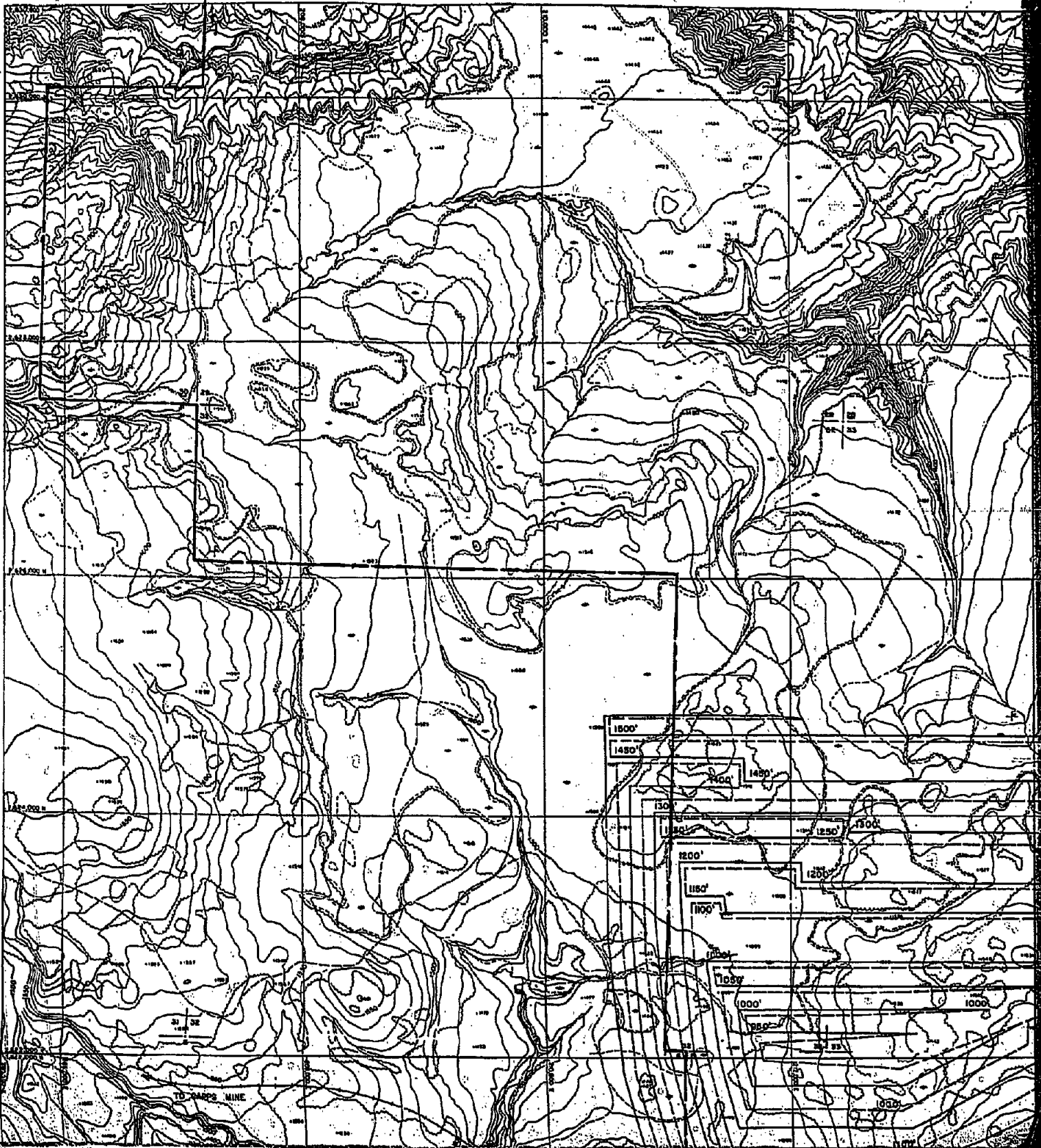
0 1000' 2000'  
Scale in Feet

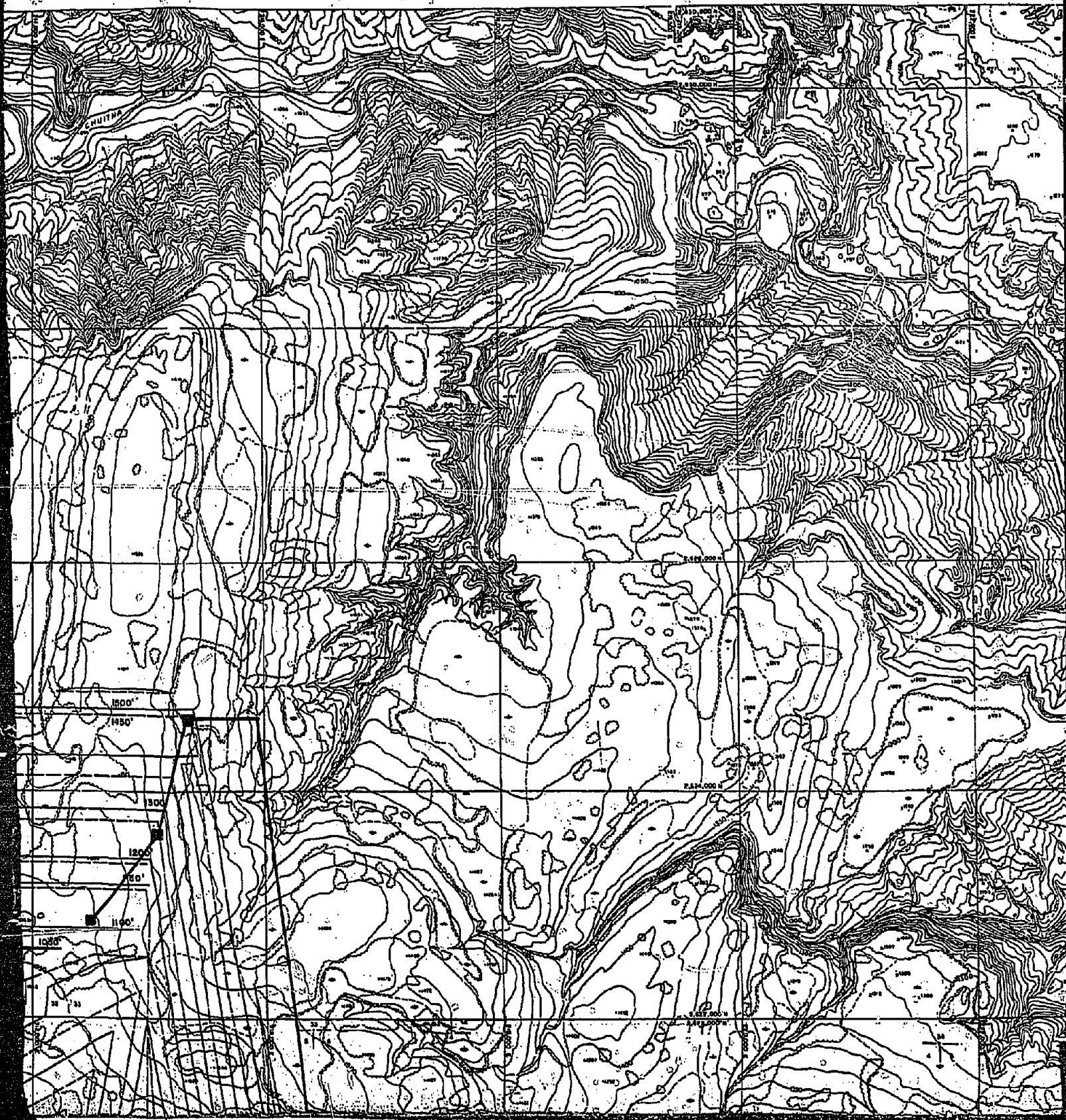
**CIRI-PLACER**  
*BELUGA METHANOL PROJECT*  
COOK INLET, ALASKA

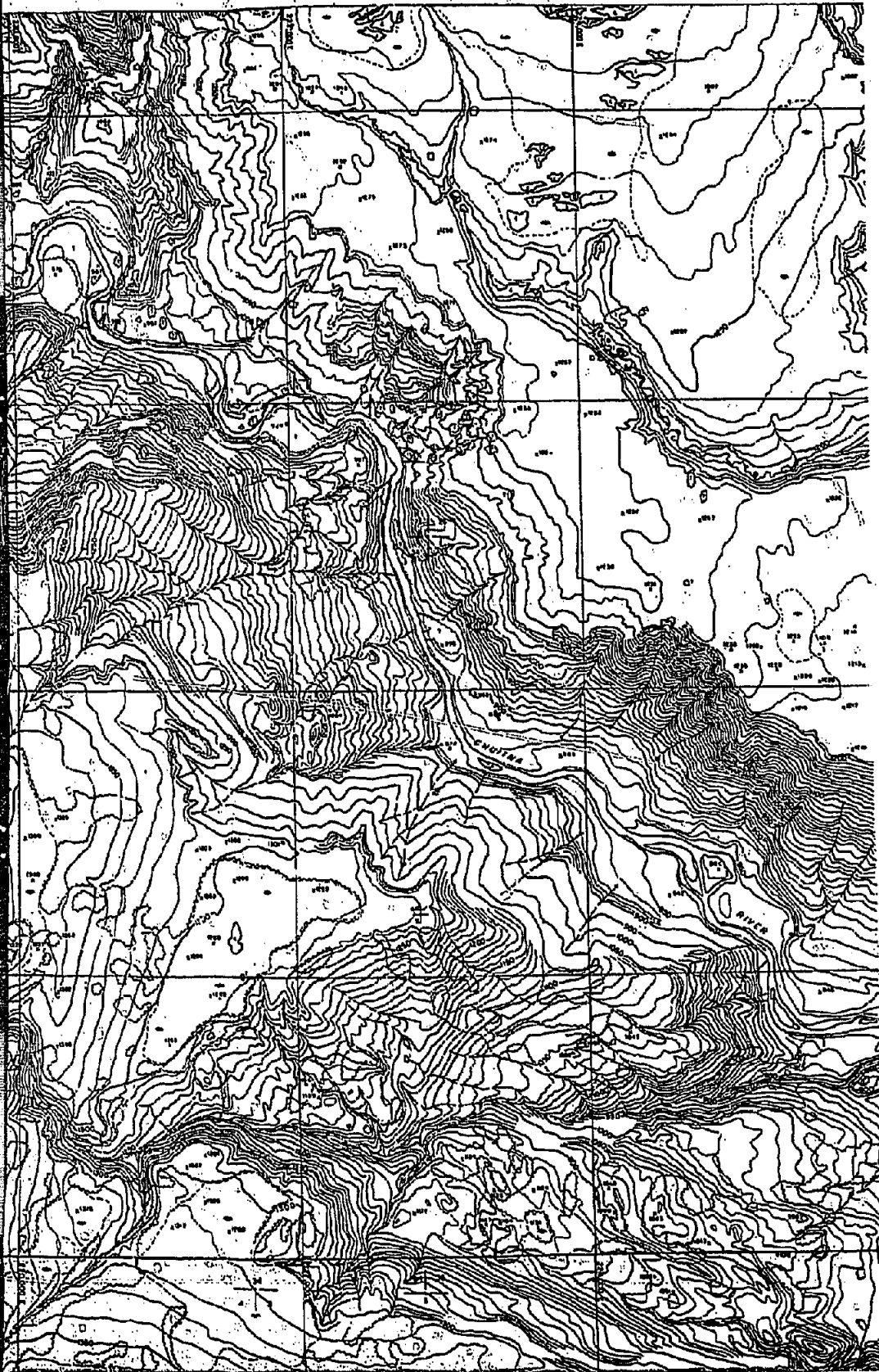
**PAUL WEIR COMPANY**  
INCORPORATED  
CHICAGO, ILLINOIS 60606

**PROJECTED MINING PROGRESS**  
**THRU YEAR 5**  
**CHUITNA WEST AREA**

**EXHIBIT GG**  
**JULY, 1981**  
**SCALE: 1" = 1000'**  
**JOB NO. 2750-A**











PROPERTY LINE  
TOP OF CUT OR FI  
BOTTOM OF CUT  
DUMP STATIONS

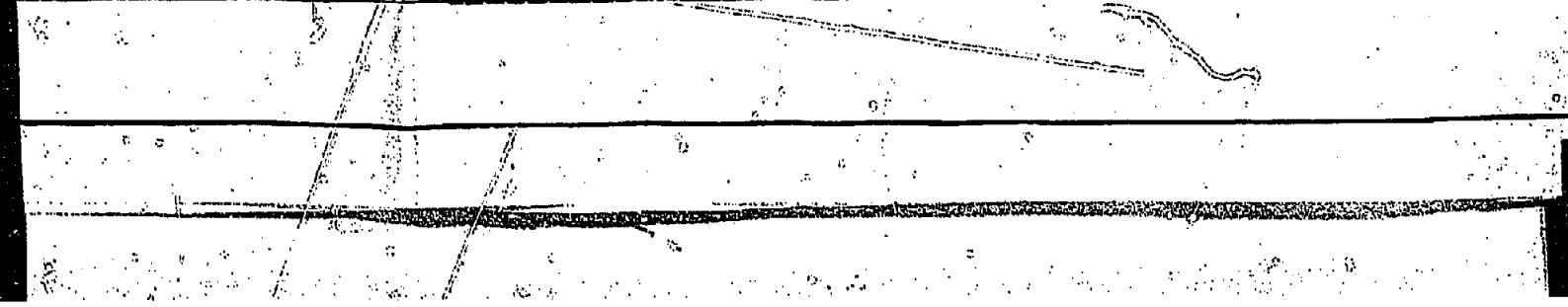
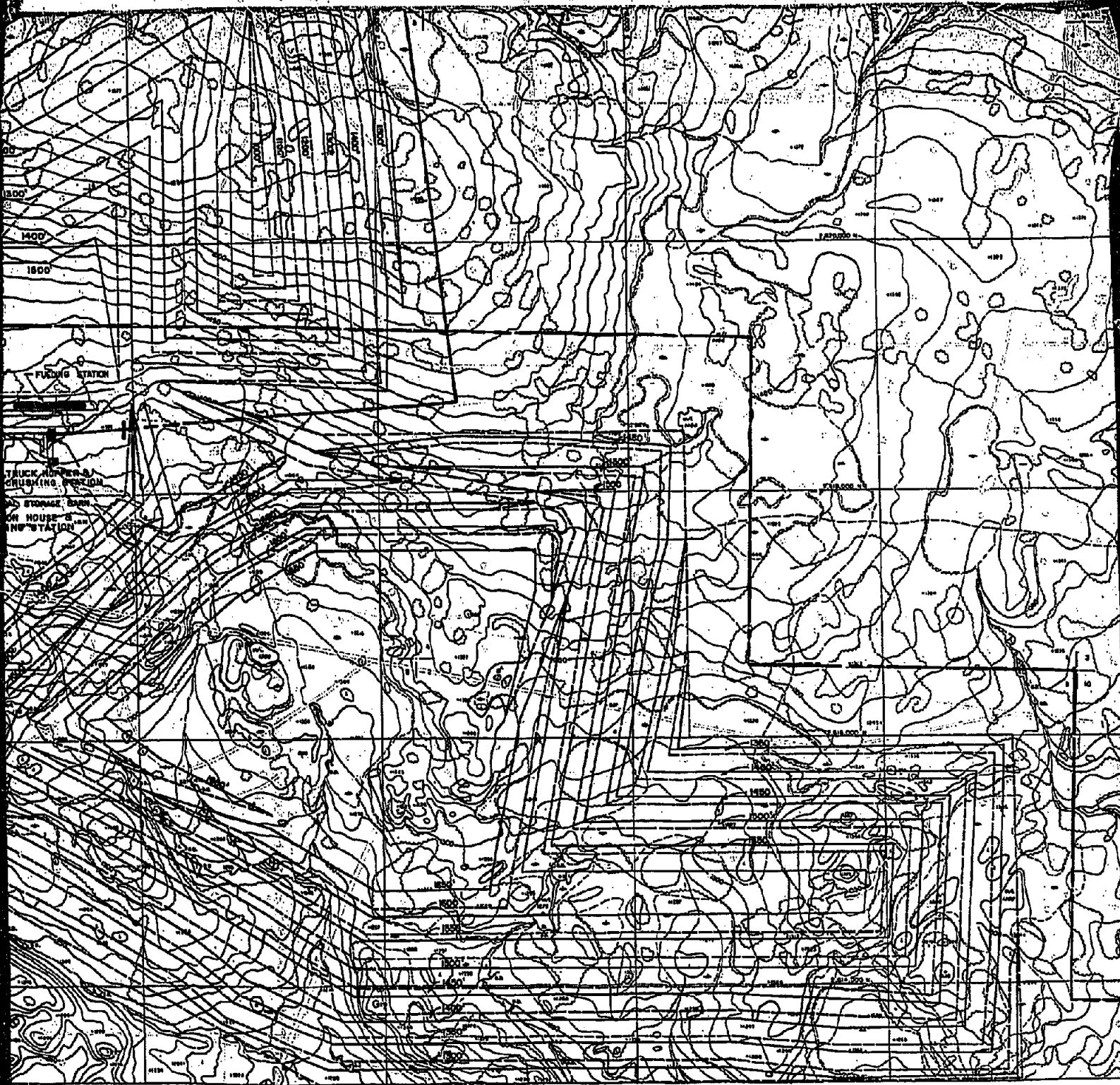
# EXHIBIT - HH

## LEGEND

- PROPERTY LINE 
- TOP OF CUT OR FILL BENCH & ELEVATION  1500'
- BOTTOM OF CUT OR FILL BENCH & ELEVATION  1500'
- DUMP STATIONS 

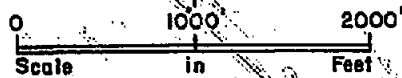








CIR  
BÉLUG  
COOK IN  
PROJE  
CHU



<b>CIRI-PLACER</b> <i>BELUGA METHANOL PROJECT</i> COOK INLET, ALASKA	<b>PAUL WEIR COMPANY</b> INCORPORATED CHICAGO, ILLINOIS 60606
PROJECTED MINING PROGRESS THRU YEAR 10 CHUITNA WEST AREA	EXHIBIT HH JULY, 1981 SCALE: 1" = 1000' JOB NO. 2750-A