

USSBS II-6

Touren

April 1945

Gesamt	=	_____
Sti	=	_____
Hy	=	_____
Buna	=	_____
Meth+Iso	=	_____
R'entsp.	=	_____

6 000

5 500

5 000

4 500

4 000

3 500

3 000

2 500

2 000

1 500

1 000

500

0

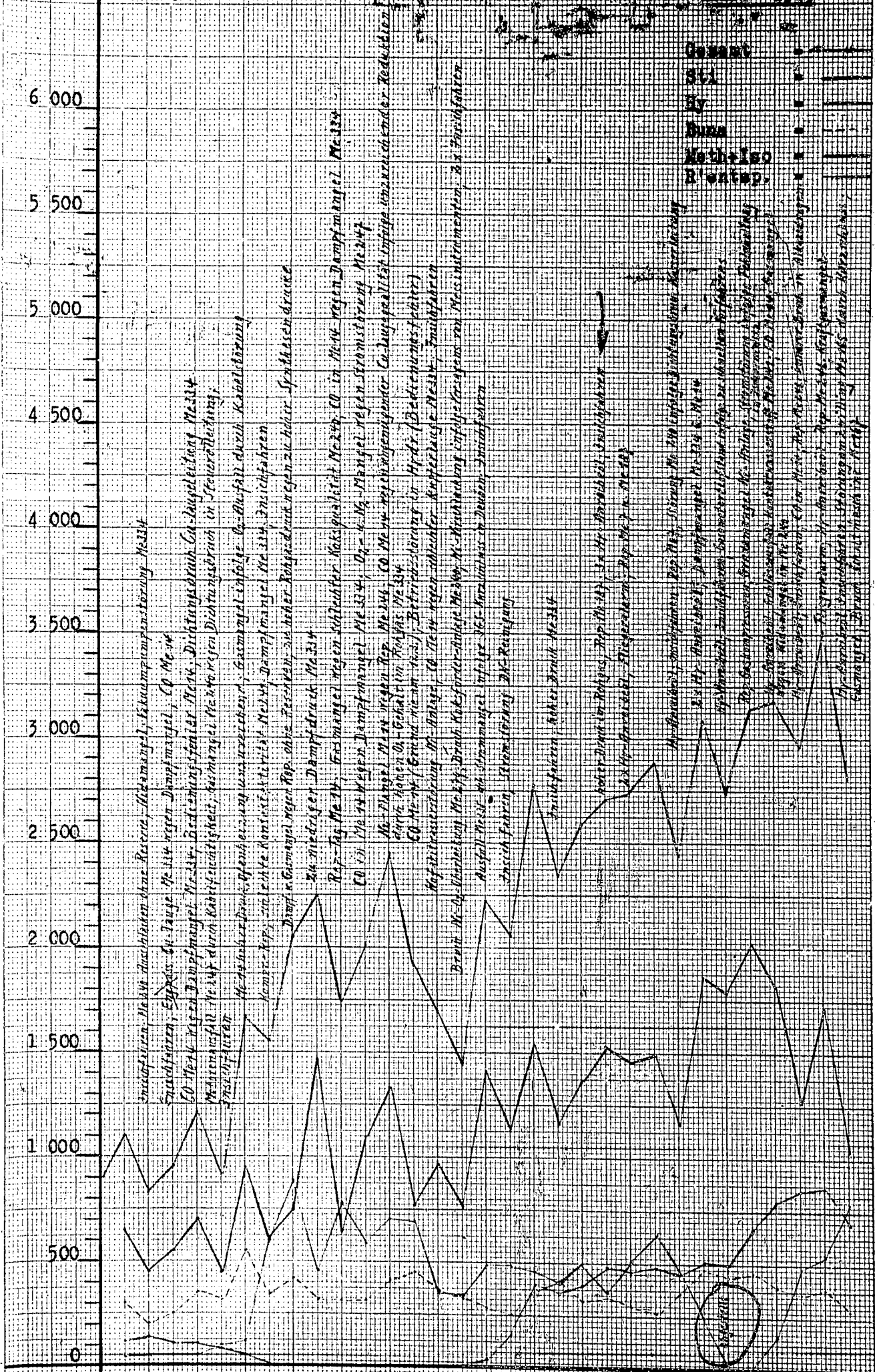
Rep. Nr. 101 u. 102
 Mangel in Feingastung Nr. 14, Dampf mangel a. hoher Co-Gehalt
 2 x Feingastung, 2 x Abgas, 2 x Feingastung
 2 x Abgas

1000 m³ = 3200 m³ = 5500 m³

Tag: 2 4 6 8 10 12 14 16 18 20 22 24 26 28 30

Touren

Nov. 1945



6000
 5500
 5000
 4500
 4000
 3500
 3000
 2500
 2000
 1500
 1000
 500
 0

Tag 2 4 6 8 10 12 14 16 18 20 22 24 26 28 30

Me 334
 Me 224

Touren

Februar 1945

Gesamt	-	_____
Sti	-	_____
Hy	-	_____
Buna	-	_____
Meth+Iso	-	_____
R'entap.	-	_____

6 000

5 500

5 000

4 500

4 000

3 500

3 000

2 500

2 000

1 500

1 000

500

0

Tag

2

4

6

8

10

12

14

16

18

20

22

24

26

28

30

Meth
Sti
Hy

Dampfmenge bei Rohreinsatz (Gesamt in Tonne und Wasser in Tonne)
Dampfmenge bei Rohreinsatz (Gesamt in Tonne und Wasser in Tonne)
Dampfmenge bei Rohreinsatz (Gesamt in Tonne und Wasser in Tonne)

6
5

Januar 1945

m³/h Gesamt-CO+H₂

m³/h CO+H₂ f. Stickstoff

m³/h CO+H₂ f. Hydr. (einschl. Kleinabnehmer)

m³/h CO+H₂ f. Methanol

Touren

Gesamt =
 Sti =
 Hy =
 Buna =
 Meth+Is =

5 000

4 000

3 000

2 000

1 000

0

14.1.1945 2. Tour

Tag:

2

4

6

8

10

12

14

16

18

20

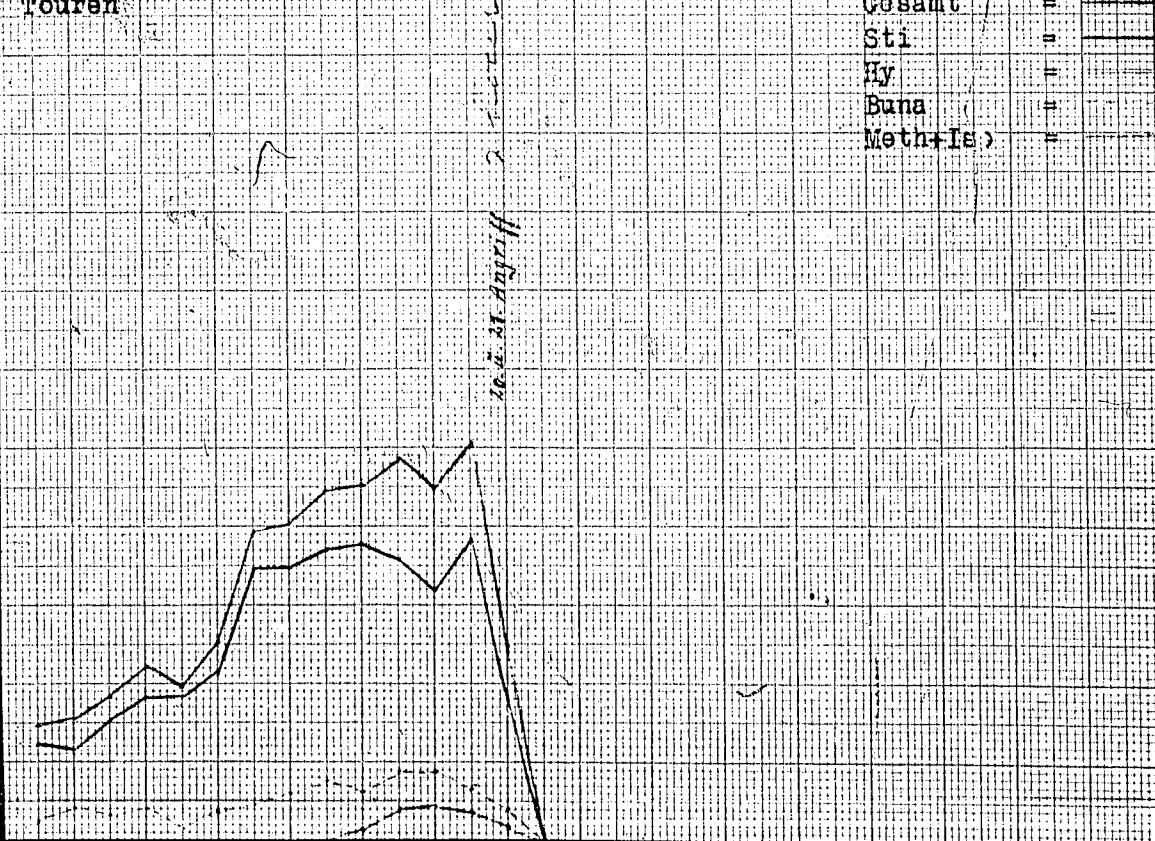
22

24

26

28

30



m³/h

Gesamt-CO+H₂

m³/h

CO+H₂ f. Stickstoff

m³/h

CO+H₂ f. Hydr. (einschl. Kleinabnehmer)

m³/h

CO+H₂ f. Methanol

Gesamt-Touren

8 000

6 000

4 000

2 000

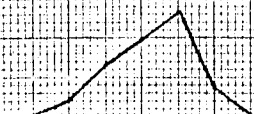
0

Tag:

2 4 6 8 10 12 14 16 18 20 22 24 26 28 30

Hydr. f. Stickstoff

Hydr. f. Methanol



m³/h

Gesamt-CO+H₂

November 1944

m³/h

CO+H₂ f. Stickstoff

m³/h

CO+H₂ f. Hydr. (einschl. Kleinabnehmer)

m³/h

CO+H₂ f. Methanol

Gesamt-Touren

8 000

6 000

4 000

2 000

0

Tag:

2

4

6

8

10

12

14

16

18

20

22

24

26

28

30

11. Freitag

13. Freitag

14. Freitag

15. Freitag

16. Freitag

Oktober 1944

m³/h Gesamt-CO+H₂

300000

280000

260000

240000

220000

m³/h CO+H₂ f. Stickstoff

120000

100000

80000

60000

m³/h CO+H₂ f. Hydr. (einschl. Kleinabnehmer)

130000

110000

90000

70000

m³/h CO+H₂ f. Methanol

120000

100000

80000

Gesamt-Touren

18000

16000

14000

12000

10000

8000

6000

4000

2000

0

Tag:

2

4

6

8

10

12

14

16

18

20

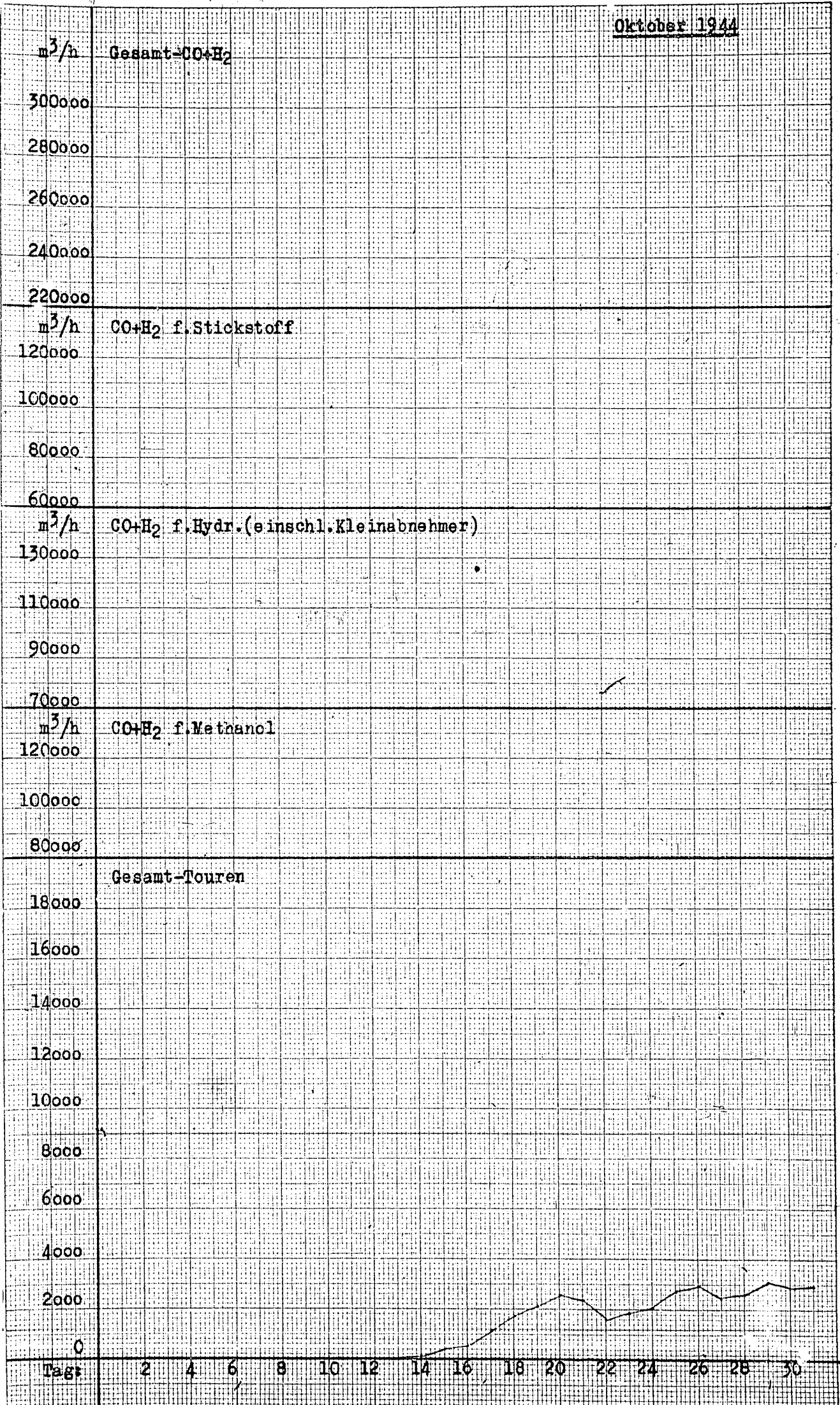
22

24

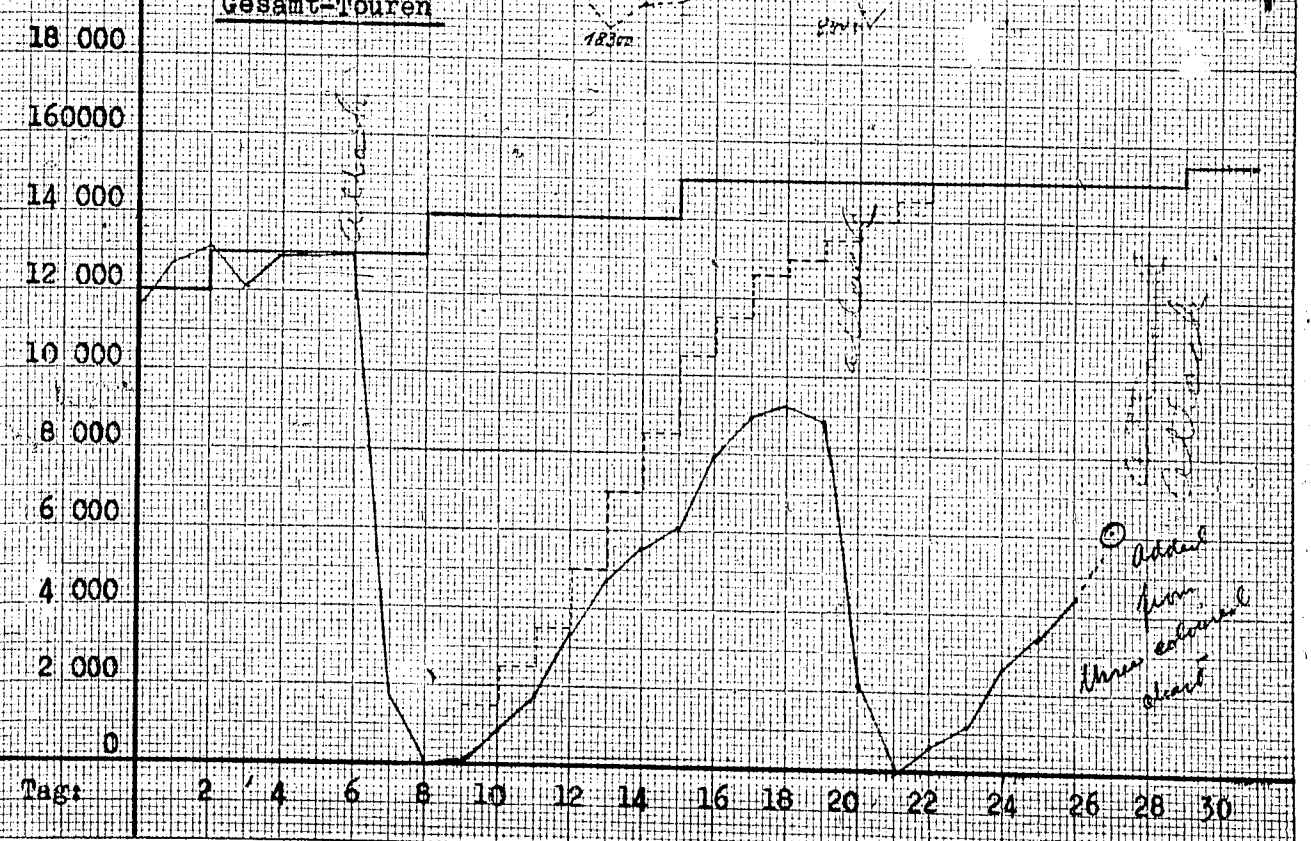
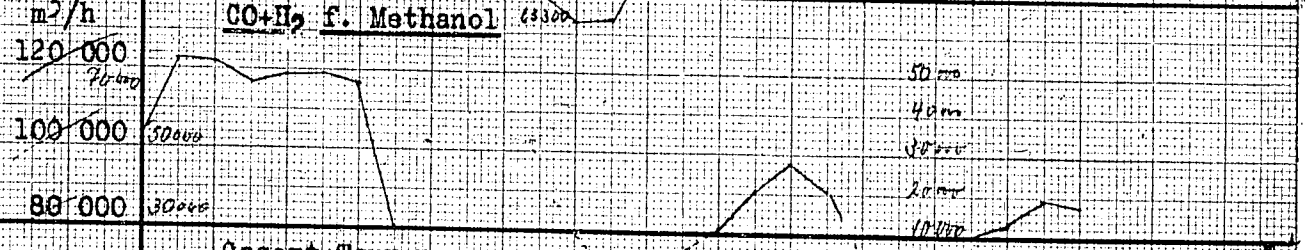
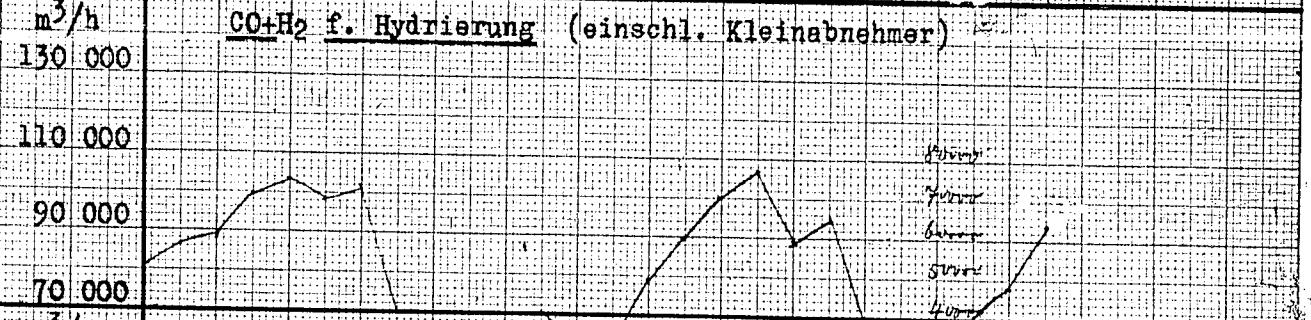
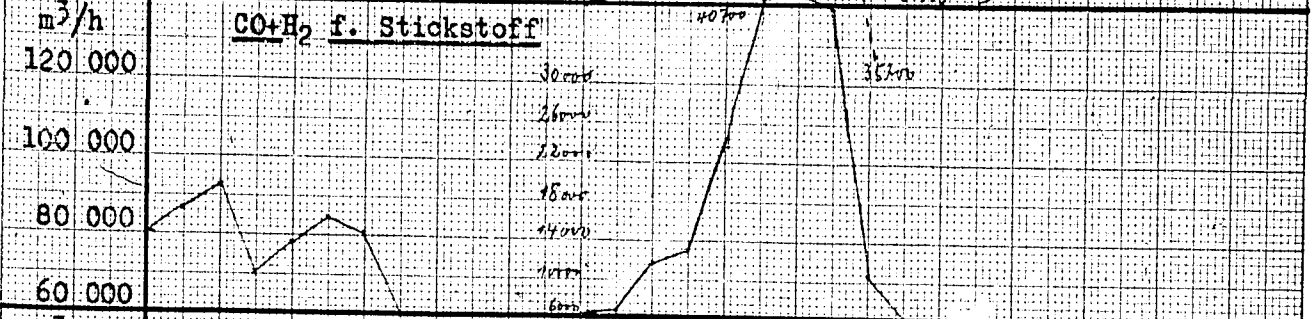
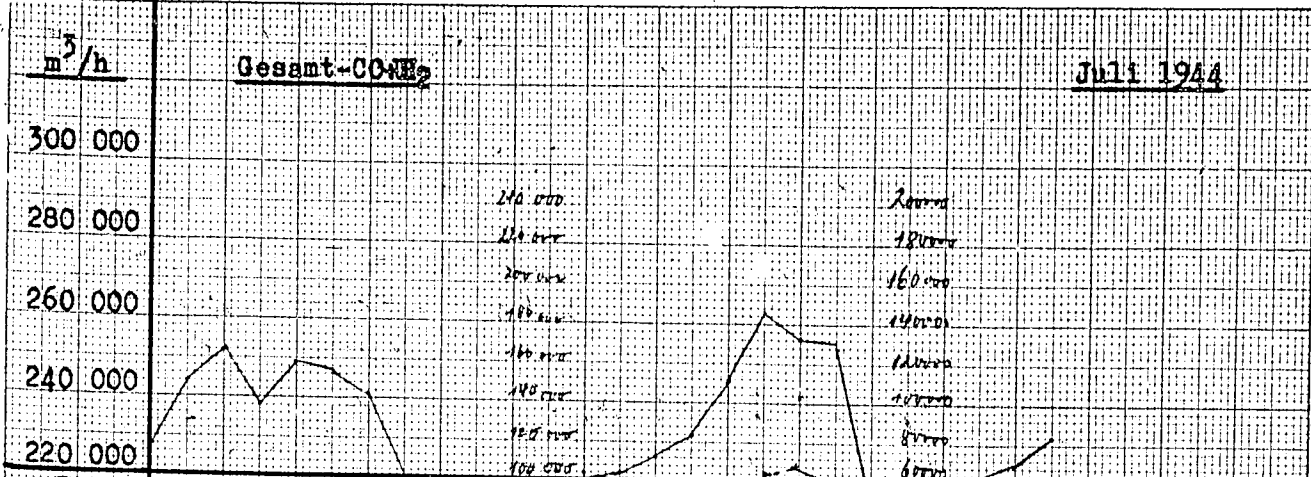
26

28

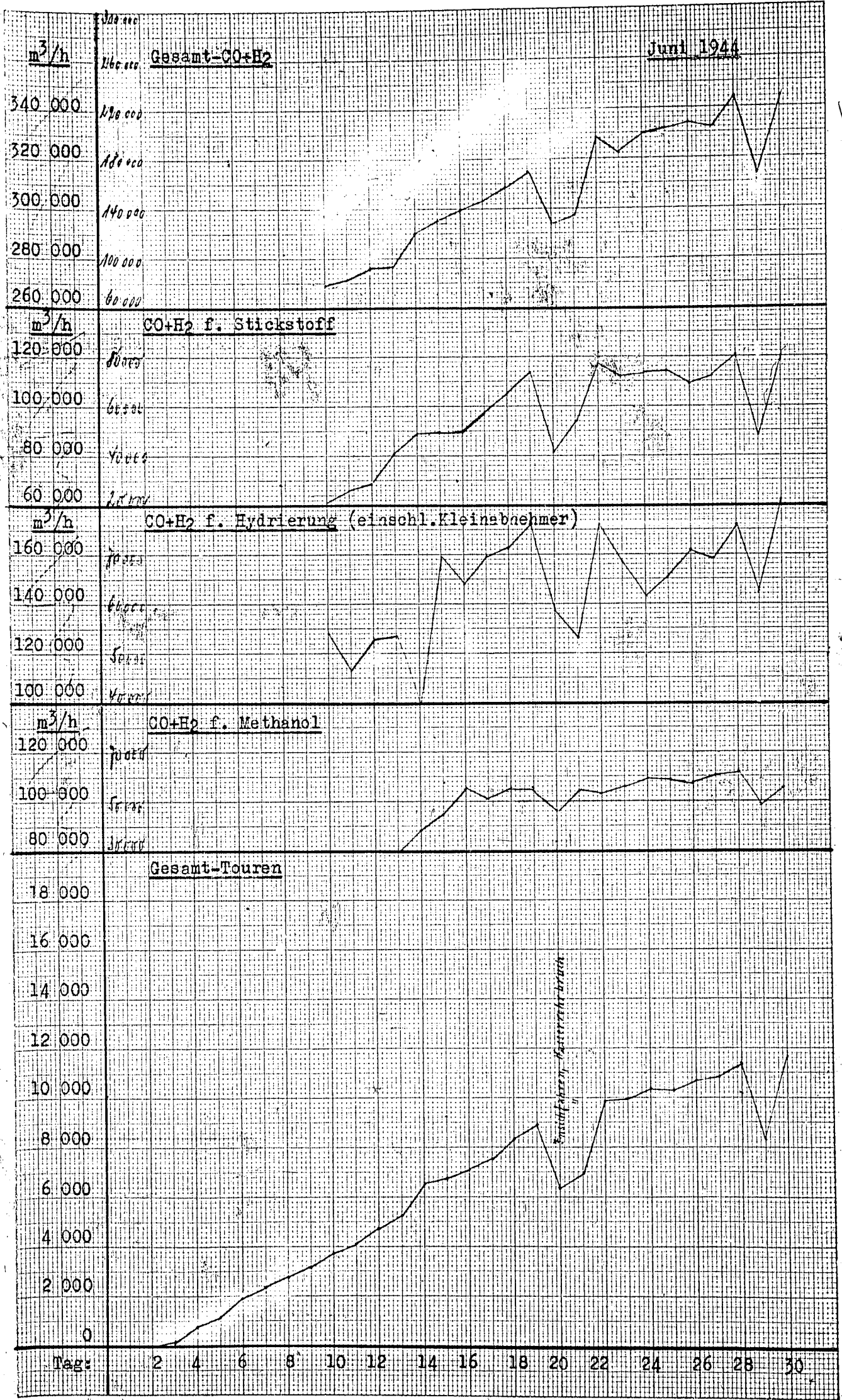
30



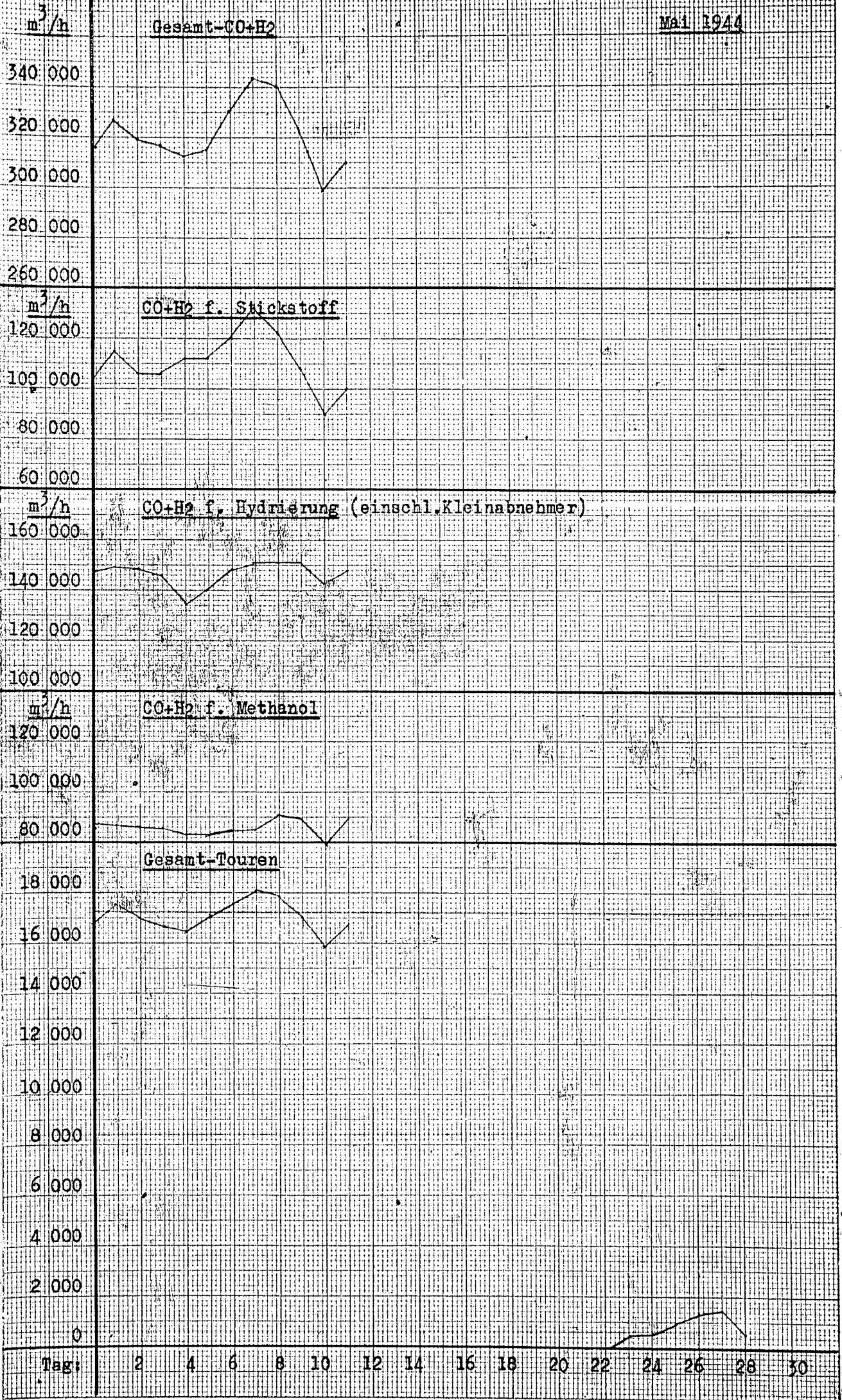
Juli 1944

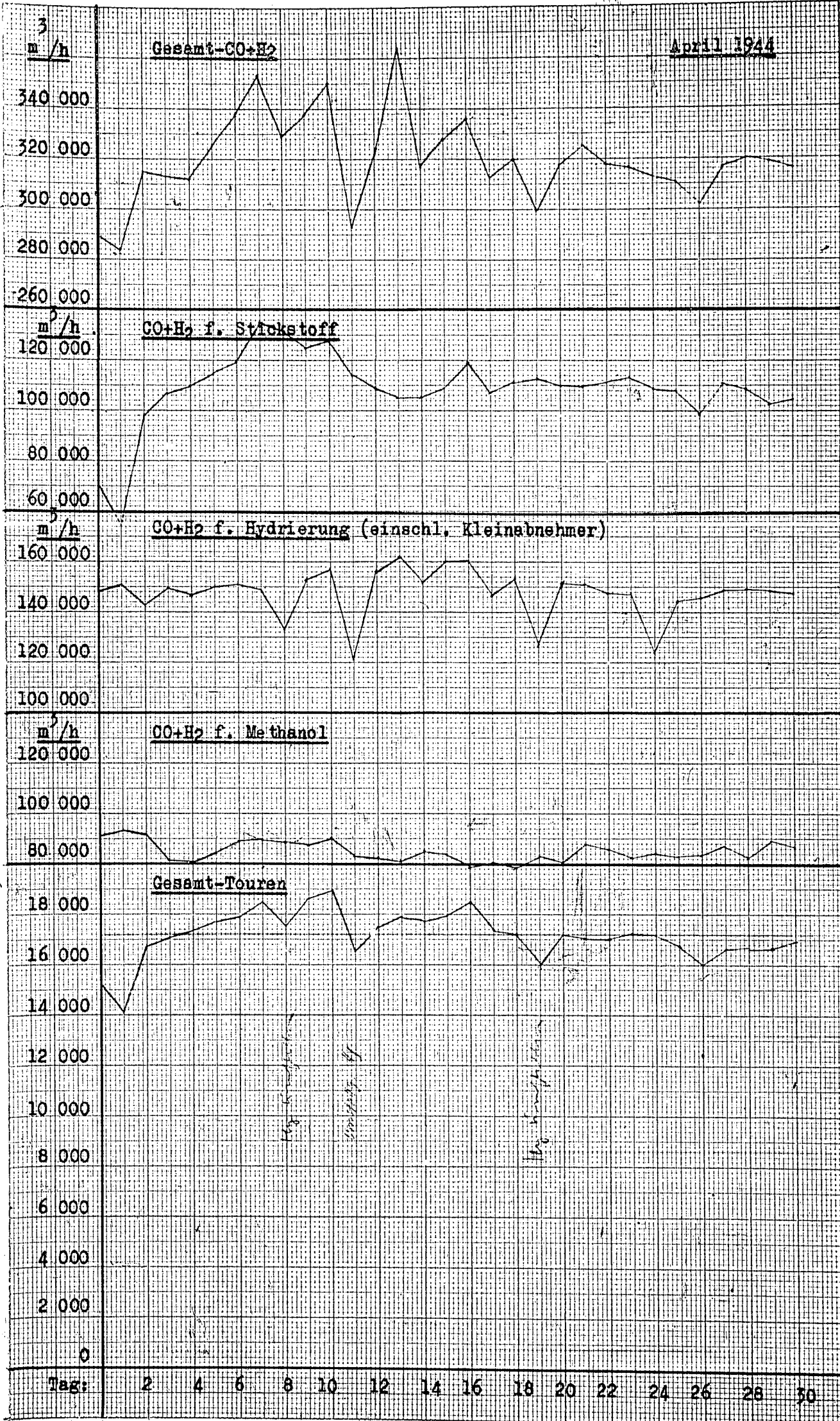


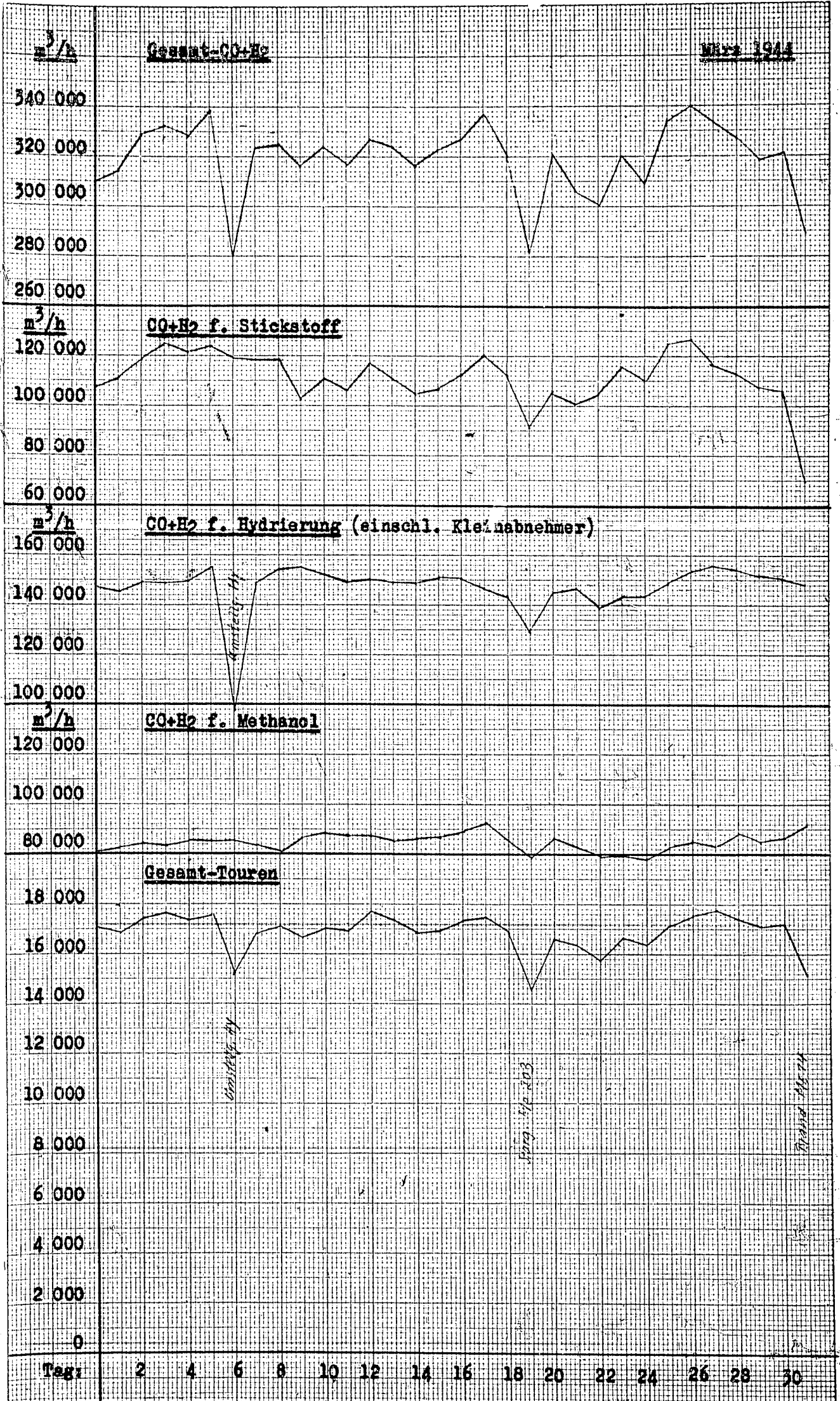
Tag: 2 4 6 8 10 12 14 16 18 20 22 24 26 28 30

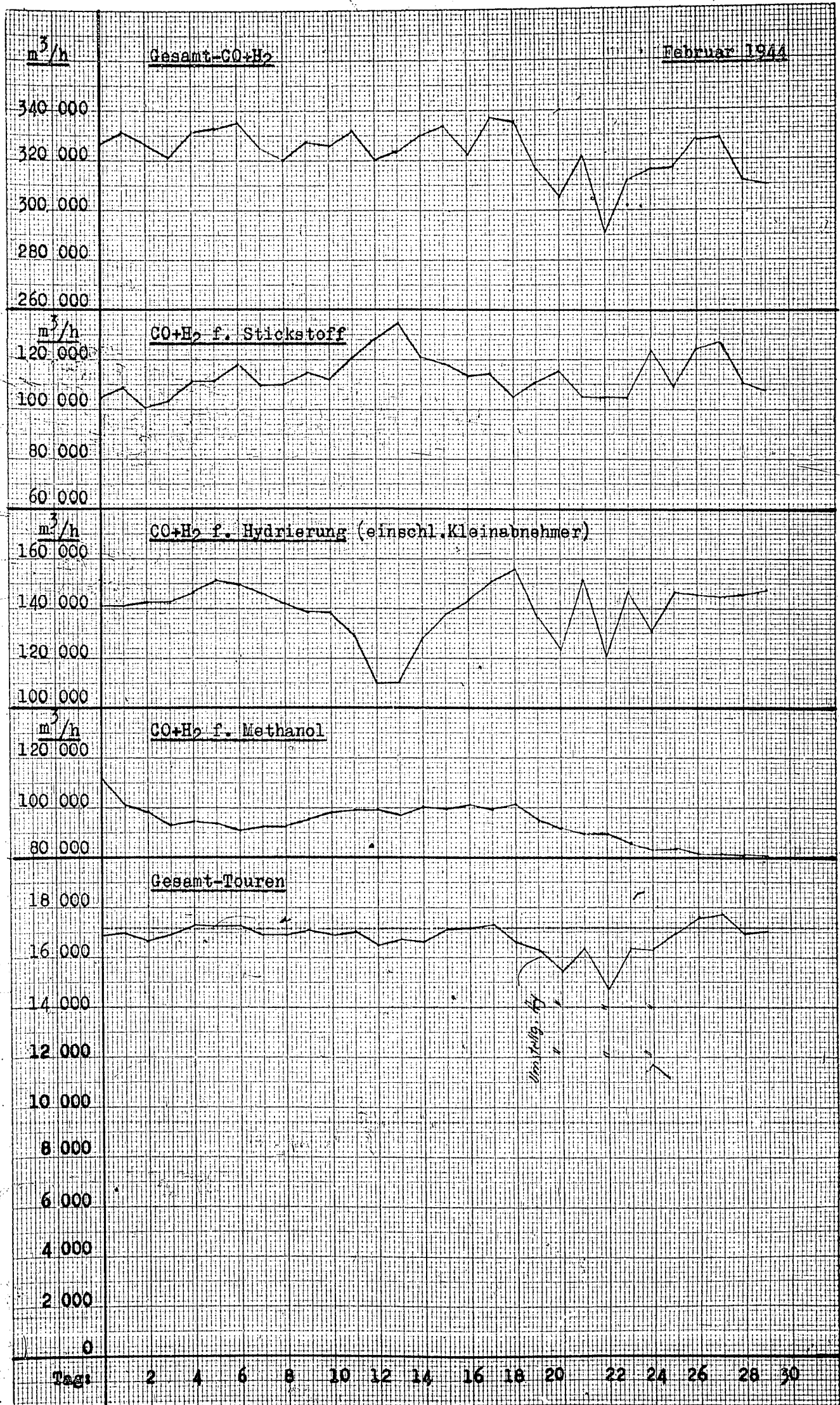


Maï 1944

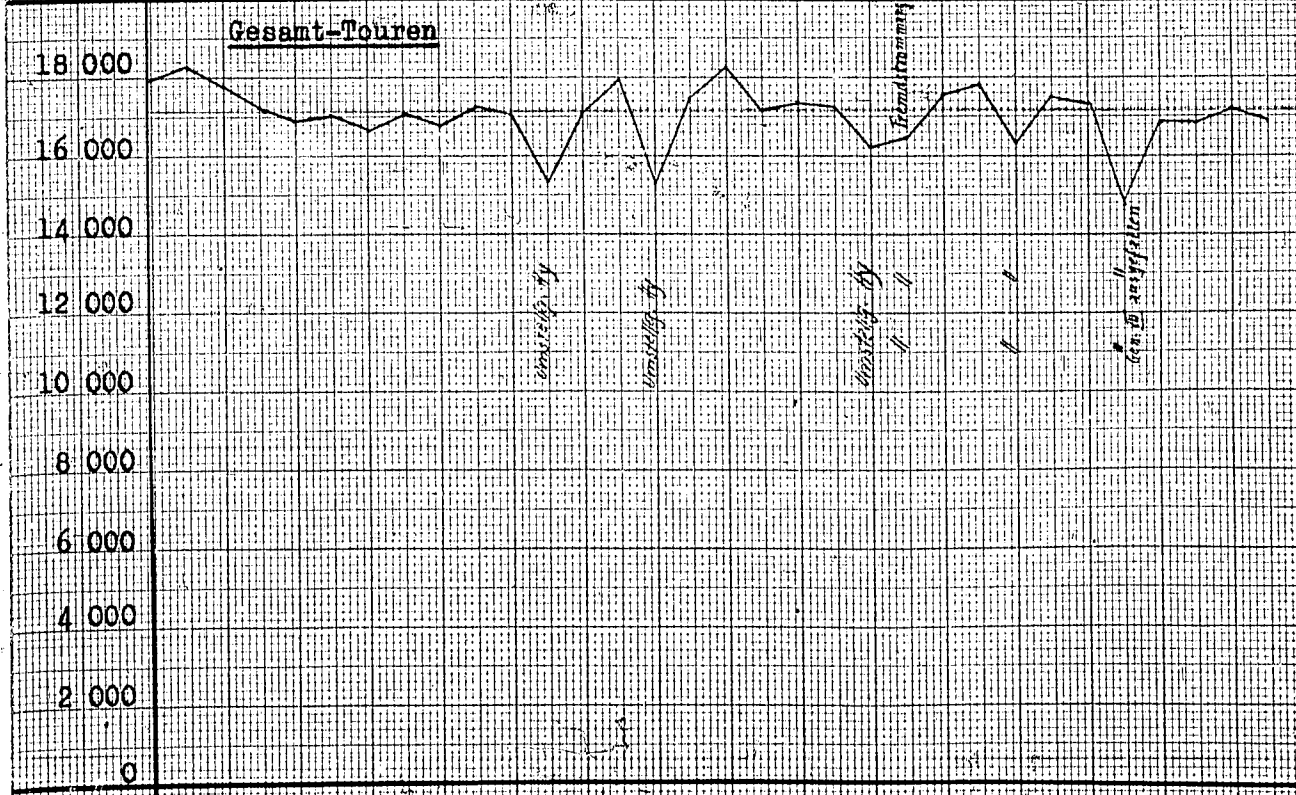
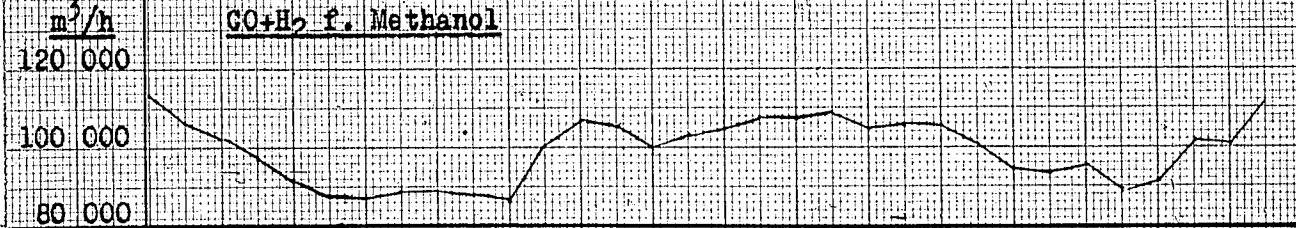
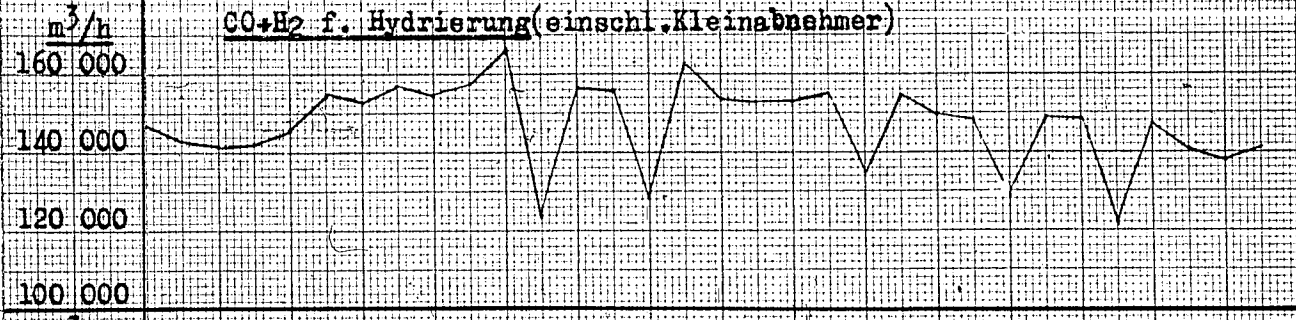
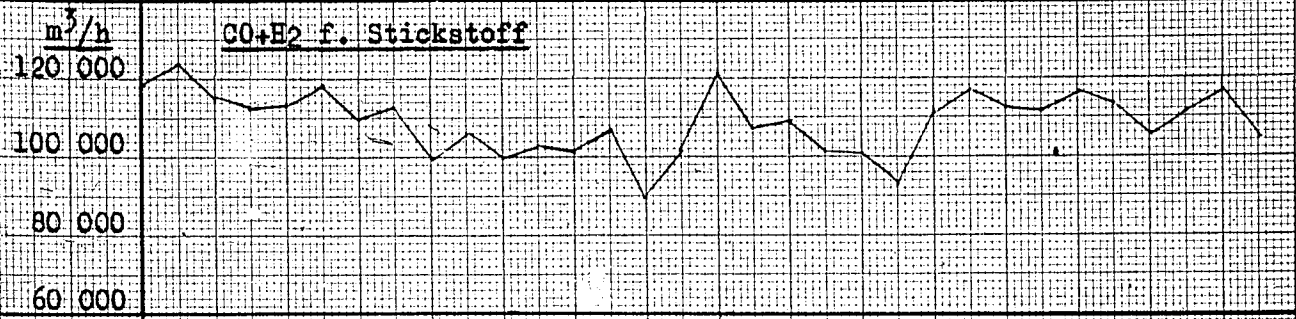








Januar 1944



Tag: 2 4 6 8 10 12 14 16 18 20 22 24 26 28 30