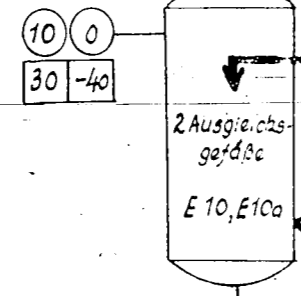
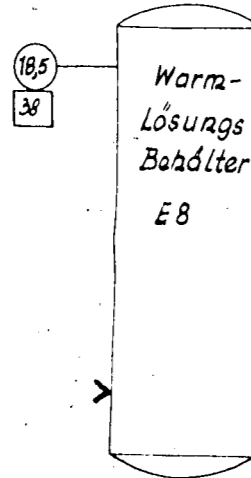


Propan (fl.) 12,58 m³/h
enthart. Oel (fl.) 6,16 m³/h

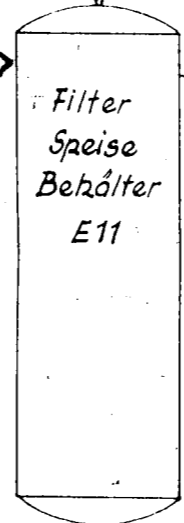
38

2 K hler
E9, E9a



Propan-Gas

Propan (fl.) 15,45 m³/h
Paraffin. Oel (fl.) 6,16 m³/h



Propan (fl.) 15,45 m³/h
Paraffin. Oel (fl.) 6,16 m³/h

Filter-

Propan-Gas 6220 kg/h

K hlkompressor
J1
Entw.-Leistung 7450 kg/h



10 D
30 -40

Reserve

Propan-Gas 2290 kg/h

Ausgleichs-
kompr.
J3
Entw.-Leistung
3810 kg/h

2290 kg/h Propan-Gas

38 -40

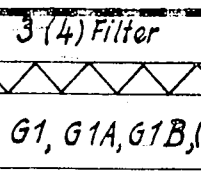
Propan-Gas 8510 kg/h

Blasegas - J2
Kompr.

Propan-Gas 2165 kg/h

Propan-Gas 4457 kg/h

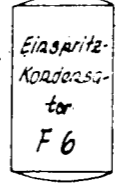
Propan fl. 11,5 m³/h



Propan-Gas 1450 kg/h

Propan-Gas 600 kg/h

Wasser 27 m³/h
W



Propan-Gas 600 kg/h
Dampf 475 kg/h

Propan-Gas 2242 kg/h

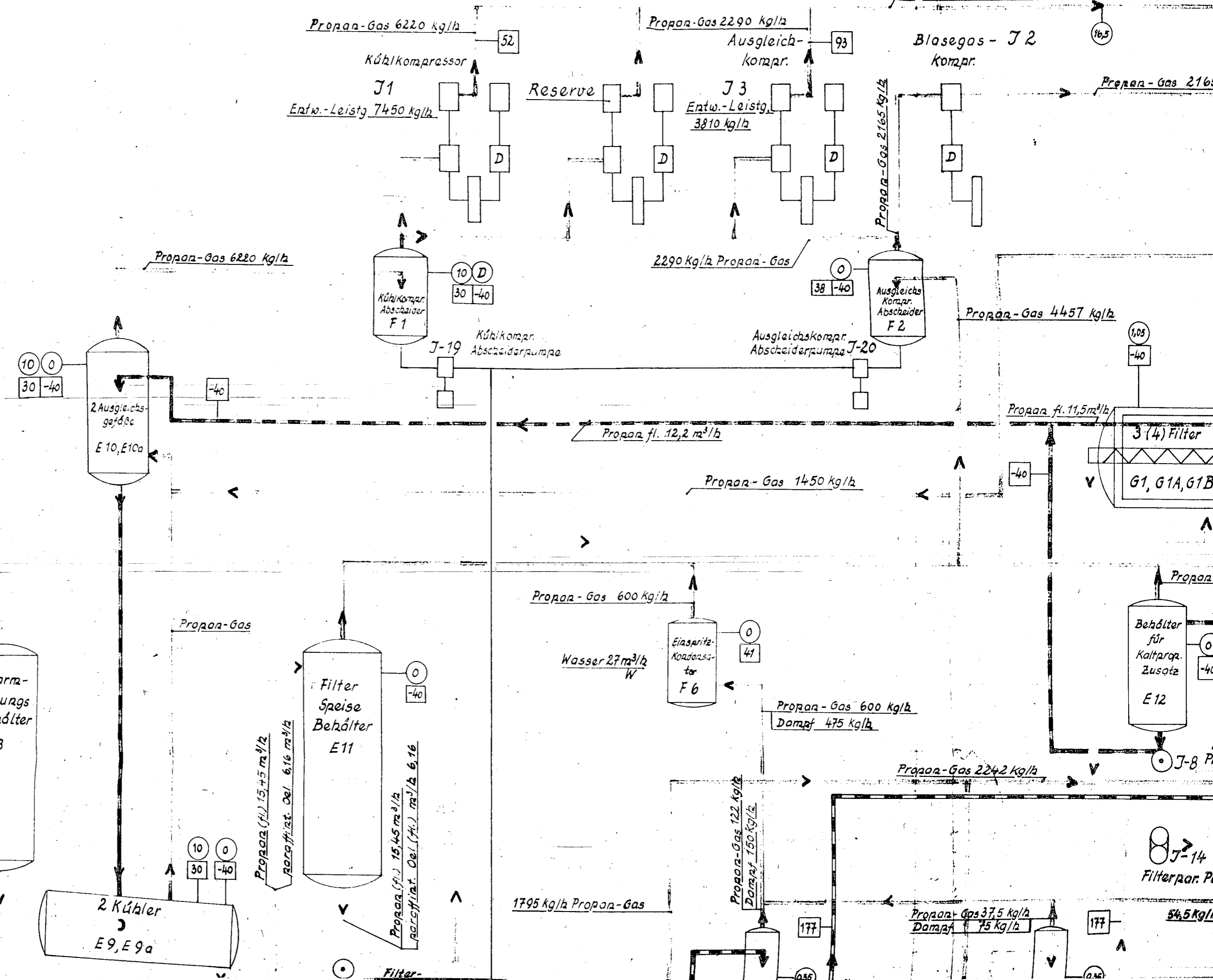
1795 kg/h Propan-Gas

Propan-Gas 122 kg/h
Dampf 150 kg/h

Propan-Gas 37,5 kg/h
Dampf 75 kg/h

J-14
Filterpar. Pumpe

54,5 kg/h



Propan-Gas 8510 kg/h

Blasegas - J 2
Kompr.

Propan-Gas 2165 kg/h

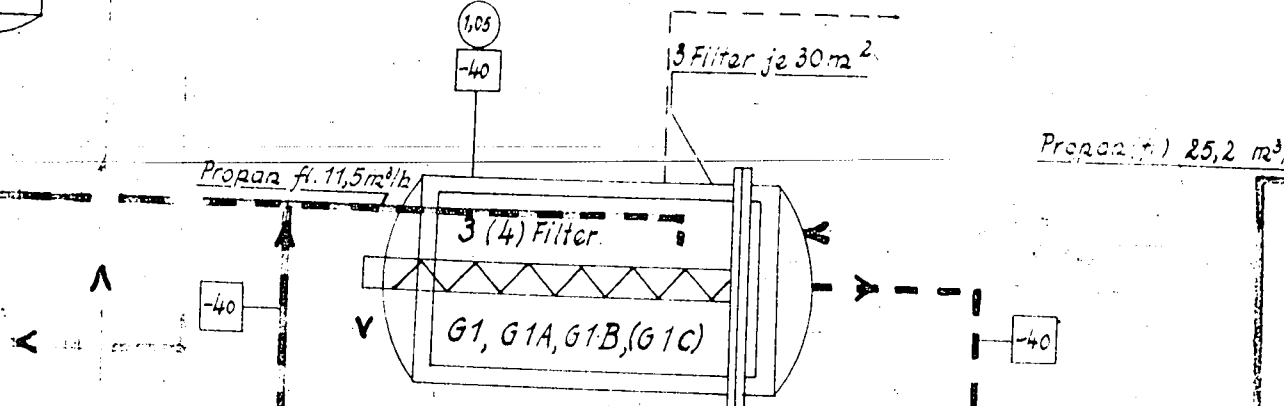
Propan-Gas 12012 kg/h

Propan-Gas 3502 kg/h

Propan-Gas 2165 kg/h

Propan-Gas 4457 kg/h

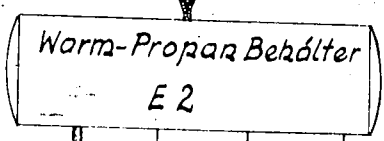
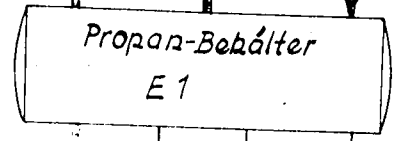
Propanzusatz aus Kesselwagen
(mit Pumpe abgefüllt)



Propan ~ 4,4 m³/h

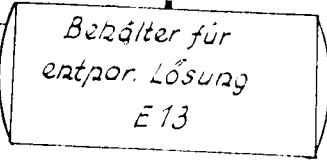
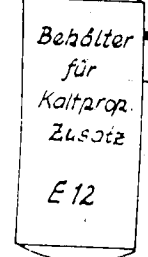
W Propan-Kondensator
C-20
Leistung: in kcal/h
1765000
Wasser 311 m³/h

Propan (fl.) 40,3 m³/h (max)



Propan-Gas 737 kg/h

Prop-Gas 3120 kg/h



5 Kalt Propan
Austauscher
Leistung 536000 kcal/h

Propan-Gas 2242 kg/h

Kalt Propanpumpe

Pumpe f. entpar. Lösung J-17

Warm-Propanpumpe

Asphalt zur Lagerung 3,7 m³/h

Harz zur Lagerung 0,99 m³/h

Paraffin zur Lagerung 0,86 m³/h

Entpar. Öl zur Lagerung 5,3 m³/h

J-14
Filterpar. Pumpe

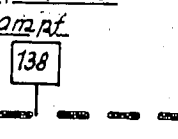
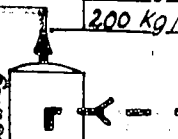
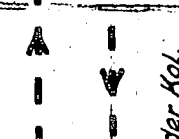
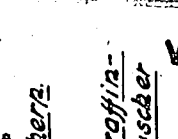
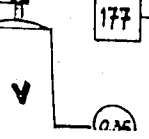
J-15
Paraffin-
Überdruckpumpe

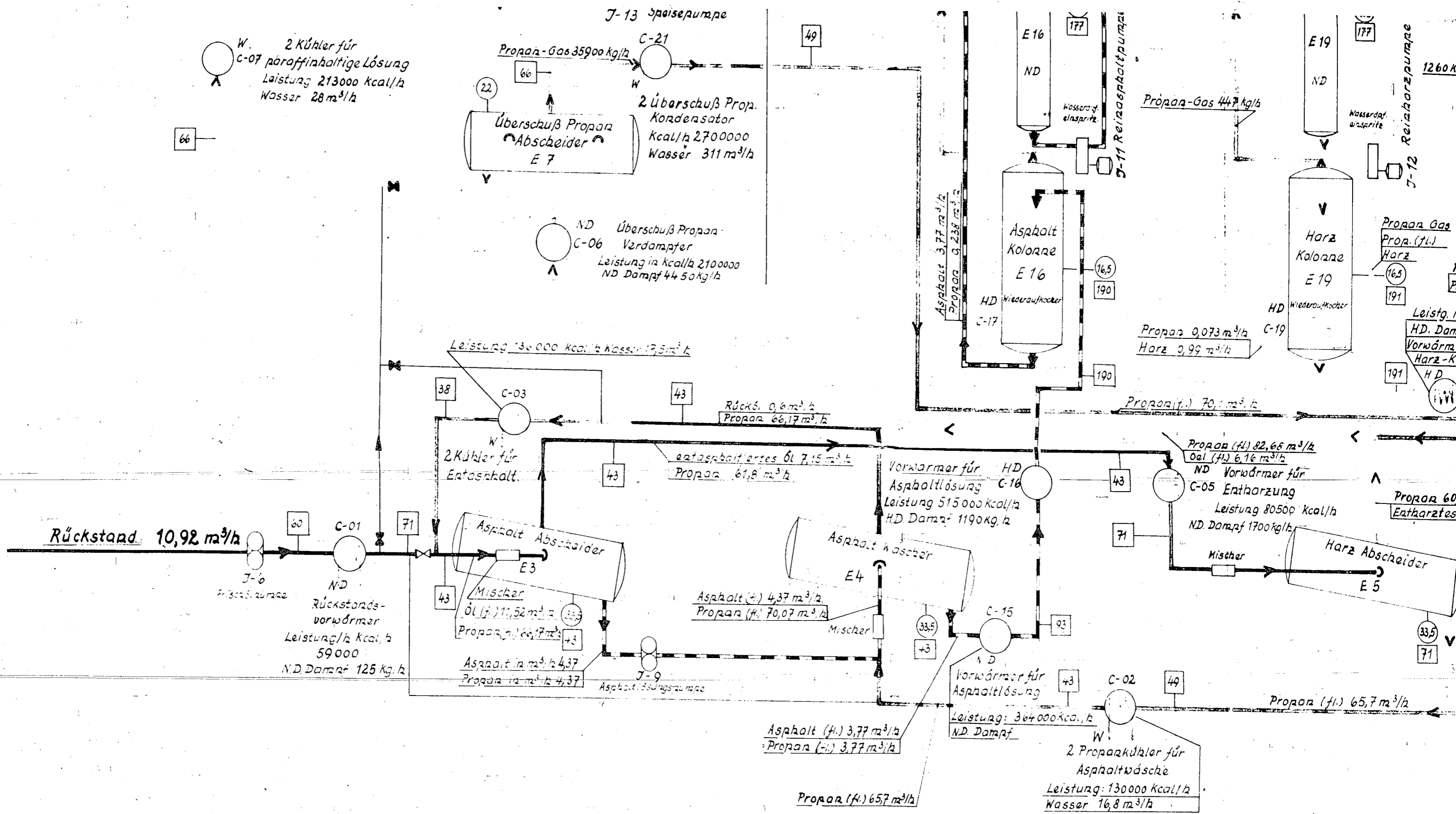
Propan-Gas 37,5 kg/h
Dampf 75 kg/h

54,5 kg/h Prop.-Gas 50 kg/h Dampf

386 kg/h Propan-Gas
200 kg/h Dampf

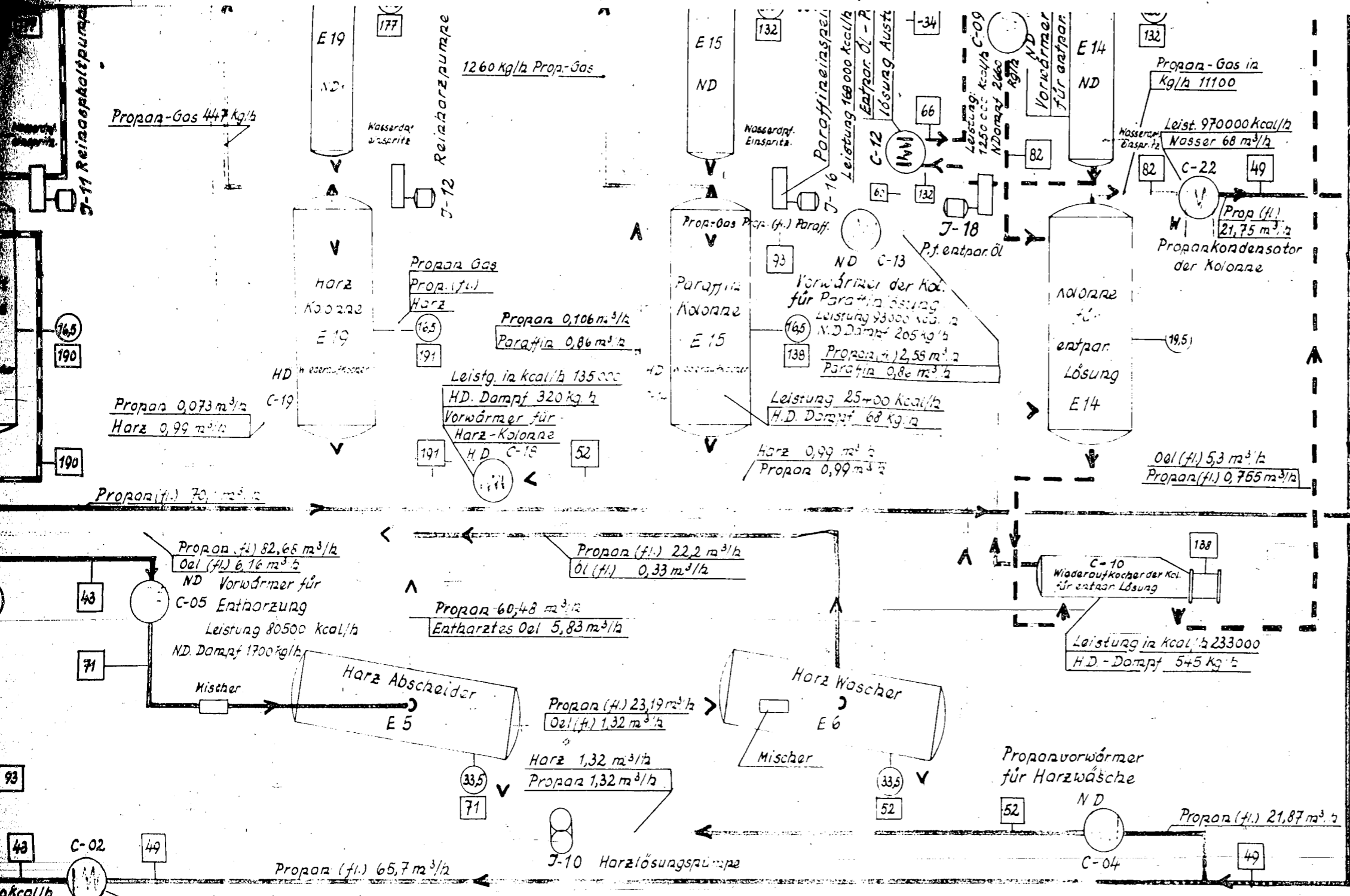
W C-11
Kühler für
entpar. Öl
Leistung 386000 kcal/h
Wasser 7,0 m³/h





Erklärung:

- Elektr. Kol.
- Dampfpu
- HD Hochdruck**



- Farberklärung -

	Rückstand
	entaspaltiertes Öl
	Asphalt
	entharztes Öl
	Harz
	entparaffiniertes Öl
	Paraffin
	Wasser-Propandampf (199g)
	Wasser-Propandampf
	Propandampf
	HD-Dampf
	ND-Dampf
	Wasser

3979-30/4.12-25

Erklärung:

Elektr. Kolbenpumpe Wendel- u. Zahradpumpe Kreiselpumpe
 Dampfpumpe Wärmetauscher Druck in atü Temperatur in °C
 HD Hochdruck-Dampf ND Niederdruck-Dampf W Wasser

Entworfen:	Datum:	Nr.:	Bemerkungen: Keine in Ziffern Friedrich Ullrich 1ag Büro Dortmund	Betriebskontrolle Werk Lü		
Geprüft:						
Normgepr.:				Bau:	305	ZNr. 40
Bereich:	Fließschema der Entasphaltierung u. Entparaffinierung.					
Maßstab:				Ers.f.: 8K.22.10.40/17		Ers.d.: