

Figure 6a. SEM image of WPS3516-4 catalyst (No. 11 in Table 1) prepared by spray drying. Potassium was added by IWI after spray drying.

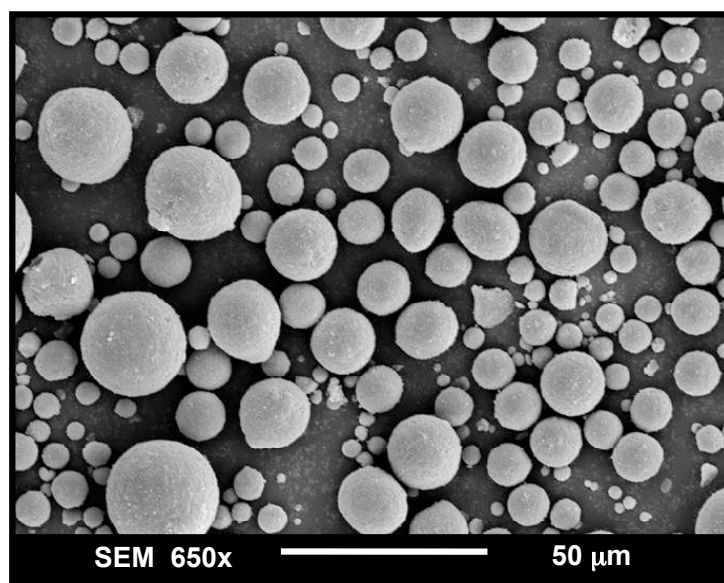
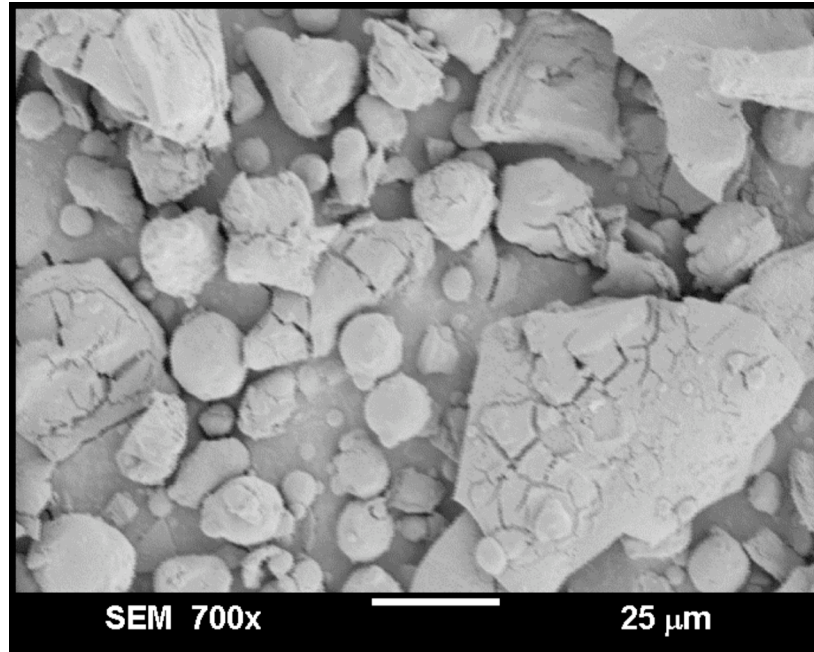
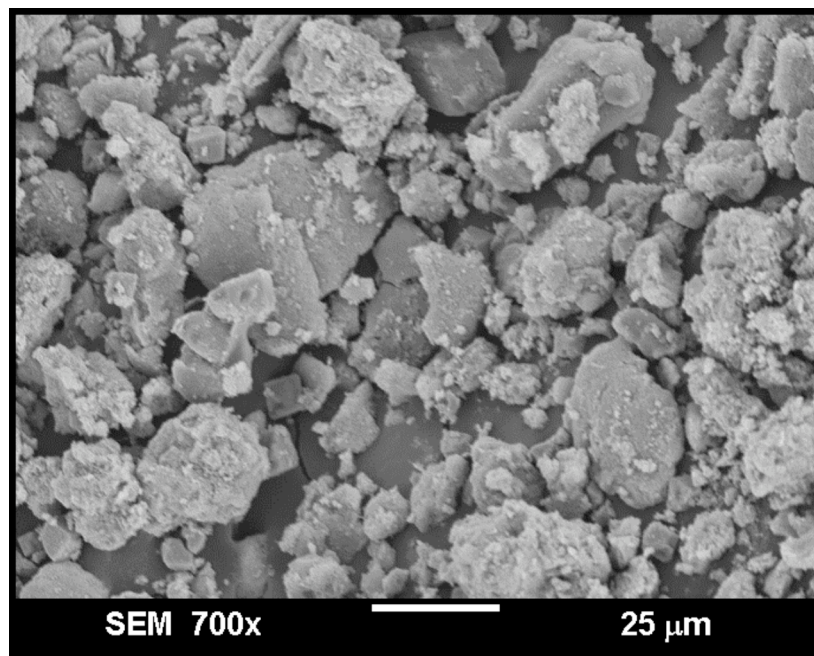


Figure 6b. SEM image of WTO3516-1 catalyst (No. 14 in Table 1) prepared by spray drying. Potassium was added by IWI after spray drying.

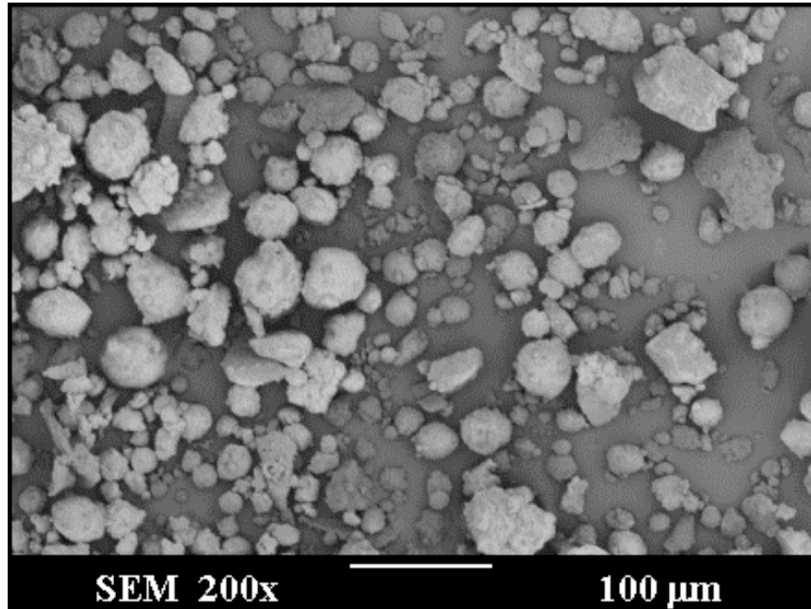


(a) TOS = 0 h

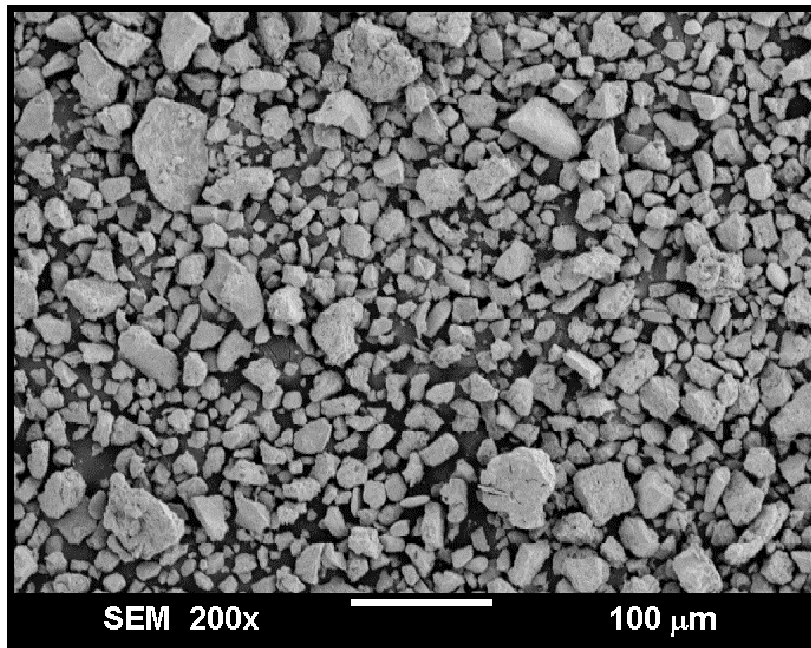


(b) TOS = 380 h

Figure 7. SEM images of spray-dried 100 Fe/5 Cu/4.2 K/11 (P) SiO<sub>2</sub> catalyst used in STSR test SB-20601.



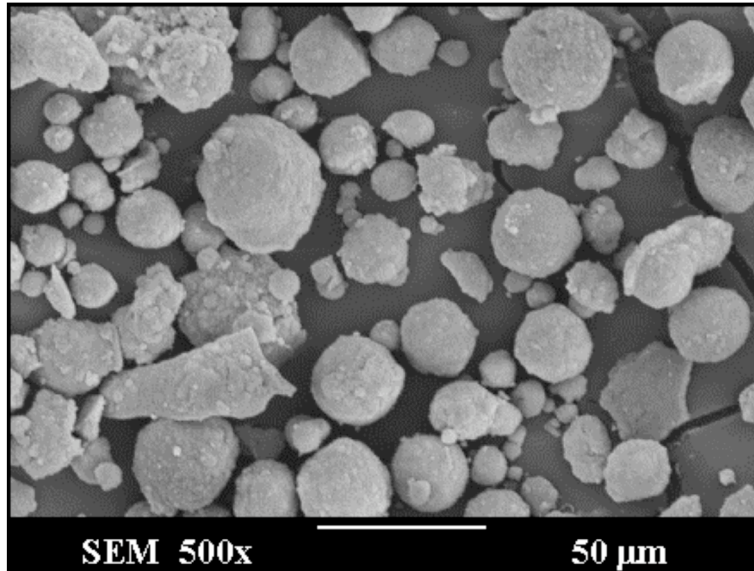
(a) TOS = 0 h



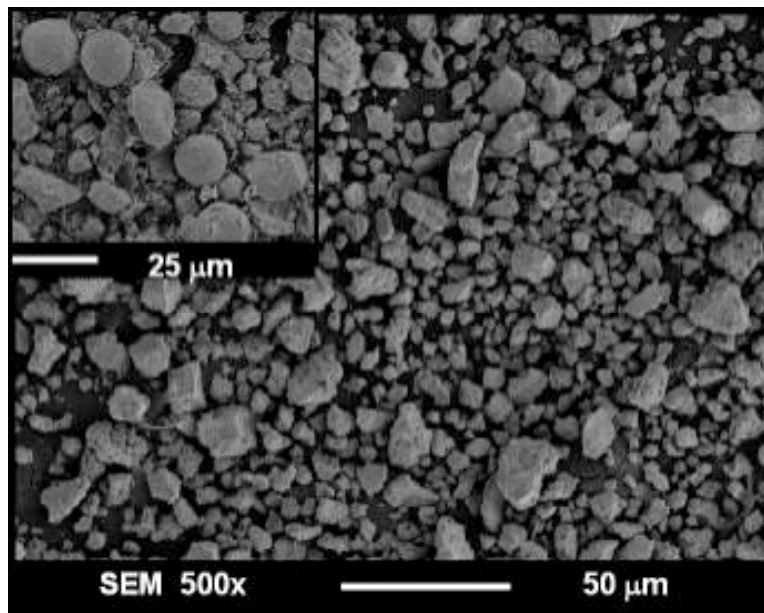
(b) TOS = 449 h

Figure 8. SEM images of spray-dried 100 Fe/5 Cu/4.2 K/1.1 (B) SiO<sub>2</sub> catalyst used in STSR test SB-34701.



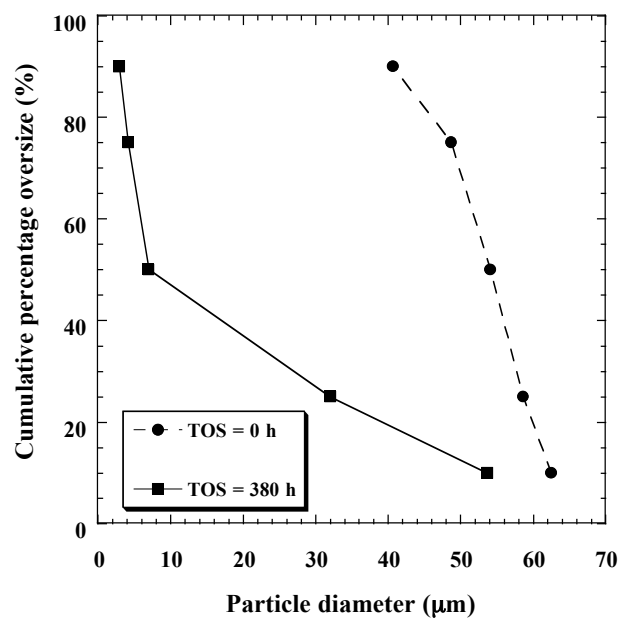


(a) TOS = 0 h

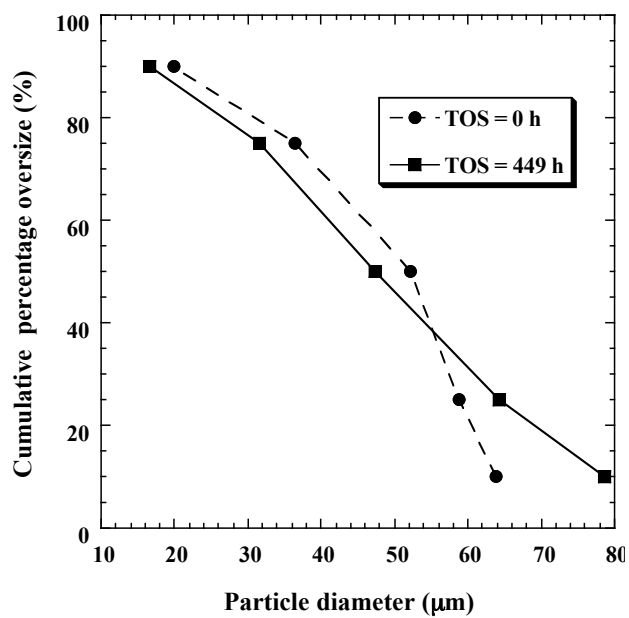


(b) TOS = 450 h

Figure 9. SEM images of spray-dried 100 Fe/3 Cu/5 K/16 (P) SiO<sub>2</sub> catalyst used in STSR test SB-11102.



(a) SB-20601



(b) SB-34701

Figure 10. Changes in PSD of HU2061 and HU3471 catalysts during F-T synthesis in STSR tests SB-20601 and SB-34701.